

TECHNICAL INFORMATION SHEET



Advantages

- **Excellent acoustic absorption**
- **Safe, non-toxic, non-irritant, recyclable and environmentally friendly**
- **Pin, staple and 'hook and loop' receptive**
- **Resistant to fading**
- **Resistant to staining**
- **Will not absorb moisture**
- **Range of extrusions for fast installation and neat, attractive finish***

Description

Vertiface Composition Type R is ideal for use on vertical surfaces to reduce reverberated noise in building interiors. It provides a pin, staple and 'hook and loop' receptive surface. It can effectively transform your walls into giant acoustic notice boards.

Constructed from polyester fibres thermally bonded in a non-woven matrix and laminated to a high density polyester fibre backing. It is supplied as tiles and may also be supplied in rolls. It is available in fine velour and in a wide range of colours. A 16mm thick version is also available in sheets; this exhibits increased acoustic absorption characteristics.

For a professional, durable finish, a range of plastic extrusions for edges, joins and internal and external corners is available to order.

Applications

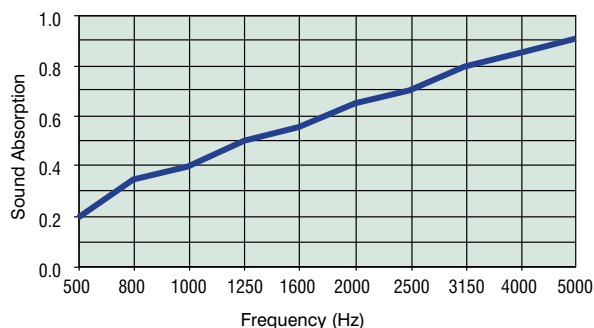
Vertiface Composition Type R is especially well suited to the education sector, commercial offices, theatres, libraries, retail, restaurants, residential applications including children's bedrooms, stairwells and corridors. It is used anywhere that reverberated noise is a problem.

Physical Information

Fibre	100% polyester
Weight	1600gm ² (typical)
Thickness available	10-12mm, 16mm
Tile size	500 x 500mm
Tile pack	10 tiles per pack (2.5m ² coverage)
Roll length	25m
Roll width	1m
Fire ratings	BS476: Part 5: Class P Part 6: Index $i_1 = 3.1$, Index $i_2 = 0.0$, Index $i_3 = 0.0$ Fire Propagation Index = 3.1 Part 7: Class 1
Colour fastness to light	Light fastness rating - 3 suitable for indoor use (ISO105-BO2-1994 lamp xenon arc method 1) Light fastness rating - 7 (TSL 9002Y)
Tolerance	10-12mm +/-10% on thickness 10-12mm +/-1% on width/length 10-12mm +50mm -0mm for trimming on site 16mm +/-10% on thickness 16mm +/-1% on width 16mm +15mm/-0mm for trimming on site

Acoustic Performance

Vertiface Composition Type R has been tested to a Noise Reduction Coefficient (NRC) of 0.4 and will typically reduce reverberated noise by approximately 40%.



Vertiface Composition Type R can also achieve 0.95 NRC with additional backing material. Please call the technical team for further information.

* Special order only

Standard Colours



BLACK



SILVER



SKY



STATELY



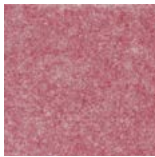
**BRIGHT
BLUE**



AZURE



SAGE



CORAL



BUTTER



THEATRE

Note:

- 1) The above colours should be used as a guide only. We will supply a detailed colour swatch and product samples on request.
- 2) Other colours are available to special order, please contact us for details.



IMPORTANT: Directions for use are given for guidance only and are not intended to form part of any contract. They should be varied or adapted to suit your particular materials or conditions of use. Goods supplied by the company are made to approved standards from the highest quality raw materials but no warranty or guarantee is given as to their suitability for any particular purpose or application, and no liability is accepted for any loss or damage arising directly or indirectly from the use of the Company's products irrespective of any information given to us as to intended use of such products. It is therefore recommended that prospective users should test a sample of this product under their own conditions to satisfy themselves that the product is suitable for the purpose intended.

CADS 1006 – 2 1206® CMS Danskin Acoustics Solutions Ltd 2012

Email: info@cmsdanskin.co.uk Website: www.cmsdanskin.co.uk
Scotland Office: 1 Netherton Road Wishaw ML2 0EQ
Central Office: Unit 2 Lyncastle Road Warrington Cheshire WA4 4SN
Southern Office: Unit 8 Harding Way St Ives Cambridge PE27 3WR

t: 01698 356000 f: 01698 372222
t: 01925 577711 f: 01925 577733
t: 01480 463750 f: 01480 495180

Care and Maintenance

Vertiface Composition Type R is extremely durable and requires little attention to retain its good looks. Full cleaning and maintenance details are available - please contact us for a detailed product folder.

Installation

Vertiface is installed using standard hand tools. It is fixed in place using Sta-Put, and a range of extrusions is available to ensure neat, durable edges if required.

The tiles should be installed with the pile running in the same direction to avoid potential shading variations from varying angles of light incidence.

Installation Service

In addition to supply of this product CMS Danskin Acoustic Solutions can provide a listing of competitively-priced approved installers that service anywhere in the UK. Use of this service ensures that installation is performed to the highest standards by tradesmen fully experienced in the specialist skills of fitting CMS Danskin acoustic materials correctly. For further details contact our technical team on 01925 577711.

