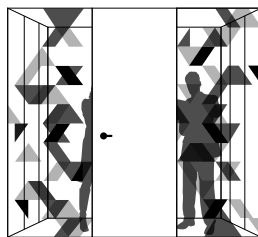




METROPOLINES 1

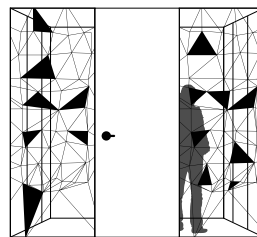


M1 - TROCADÉRO



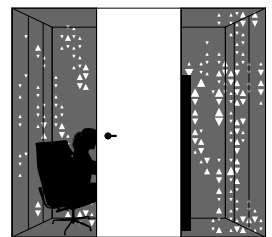
A tribute to the geometric triangle shapes associated with Parisian design.

M1 - TUILERIES



This design connects the triangular shapes with lines to increase the privacy level.

M1 - S^T GERMAIN



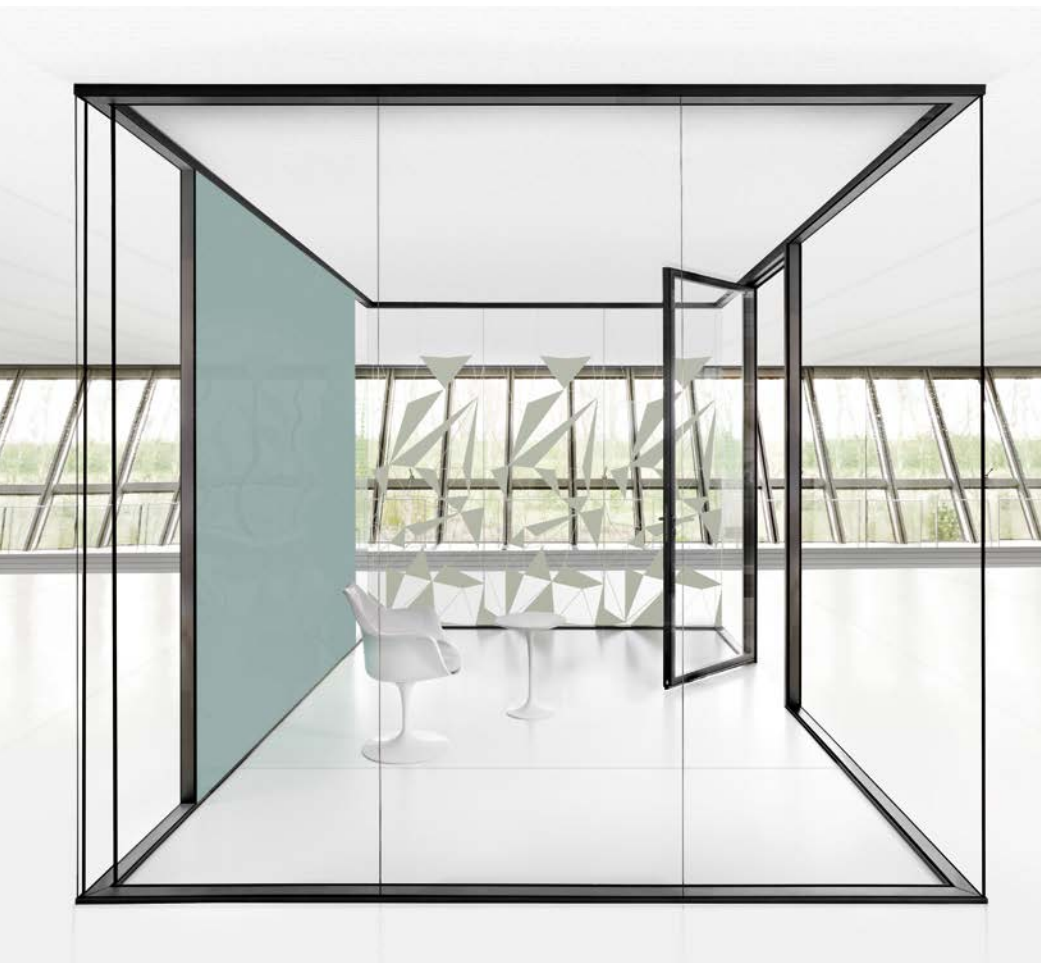
To contrast this design raises the privacy level yet further whilst allowing light to pass through.



METROPOLINES 1

Discover the face of a wall ultra-fine, clear and contemporary.

Lightweight, stylish and quality of manufacture characterise the new office partition **Metropolines 1**, designed as a glass skin stretched between minimal structures. Despite the lightness of appearance, the acoustic performance is high. **Metropolines 1** offers a «collection of textures»: Trocadéro, Tuileries, St. Germain, whose geometries are designed, arranged and calculated to provide the necessary comfort needed in the workspace, whilst preserving the transmission of light.



Sc. 1 General: Digital printing on glass. **Texture «Tuileries».**
 Left: Writeable panel of back-painted glass.
 Right: Double glazed flush glass door.



Sc.2 Left: Writeable glass panel between two wooden panels.

Construction

Metropolines 1 is a new Clestra Hauserman partition. It has a simple construction with its fine lines and tracks that almost disappear into the building.

Ultra-thin base track of 18mm.

Head track 35 to 50mm.

Glass panels

Double glazed panels can be used of 10 and 12mm thick glass, mounted in thin extruded aluminum profiles. The junction between the glass is either «frameless» (EPDM positioned into a groove machined into the edge of the glass that allows more flexibility and tolerance during installation) or by double-sided adhesive tape. A third version allows the use of 6 or 8mm glazing jointed in a thin aluminum frame (see diagram).

Metropolines 1

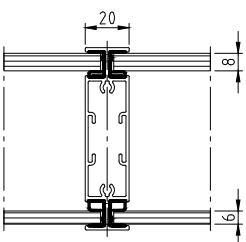
Glass panels



Sc.3 General: Digital printing on glass. **Texture «Saint Germain».**

Mitred glass joint

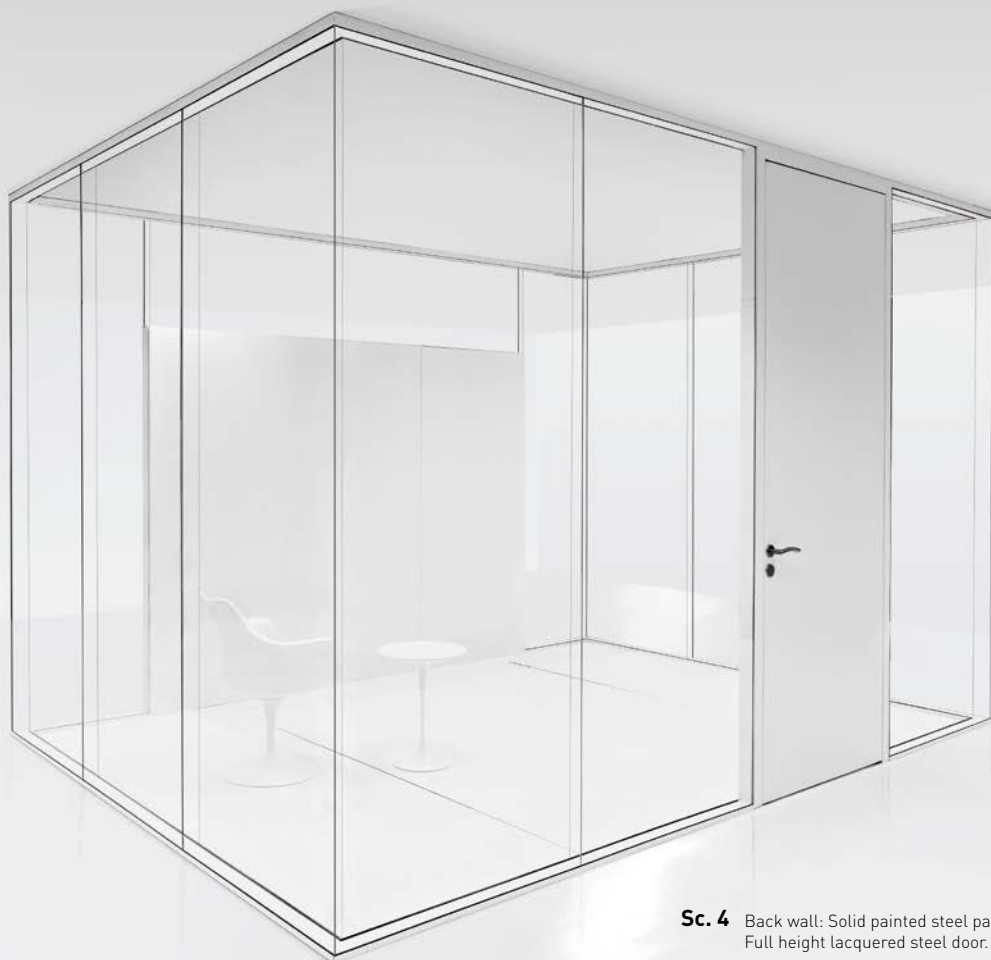
The 90 ° angle between two panels double glazed (10 or 12mm) is achieved either by UV bonding that captures all the elegance and transparency of glass, alternatively the same junction is available with an ultra-thin aluminum strip.



Panes of 6 or 8mm glass are mounted in a minimal aluminum frame.



Back-painted glass transforming the partition into a writeable wall.



Sc. 4 Back wall: Solid painted steel panels set into glass wall.
Full height lacquered steel door.

Door panels

Metropolines 1 offers a simple but complete door and frame solution, available full height in steel, wood or glass. In the basic version, the doors are flush to the outside, but are also available flush to both sides.



*Above: Full height glass door
Flush double glazed.*

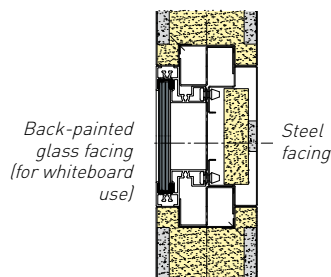
Metropolines 1

Flexible thin walls

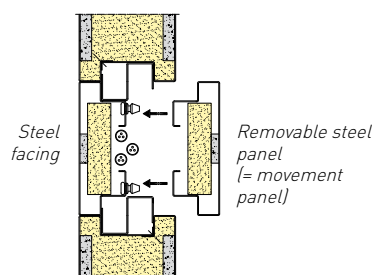


Solid panels

Metropolines 1 has responded to the needs to achieve very high soundproofing. The 83mm thick solid panels, and bi-block panels, have very high acoustic performance. The basic composite panels can be installed quickly, or can be manufactured to enable specific integration with other elements, for example back-painted glass whiteboards or for technical access management (wiring). All types of materials and finishes are available: steel, wood, glass... steel panels are coated with a high quality factory applied paint. The junction between the solid panels is a simple line with a minimal junction of 2mm which can accommodate a rack for mechanical attachment of accessories, small furniture items or sound absorbers.



Shelving is fitted onto racking hidden between the panels, accessible through junctions between the panels with a gap of only 2mm. These racks can carry cabinets, consoles, tables, acoustic absorption panels.



DESCRIPTION

Solid partition panels and all glass walls with flush jointed glazing.

CONSTRUCTION

- **SOLID MONOBLOCK ELEMENTS:**
 - . Thickness: 83mm.
 - . Steel skins 0.8mm or 1mm thick or timber skins.
 - . Base and head channels in aluminium.
 - . Height of base channel = 18, 35 or 50mm.
 - . Height of head channel = 35 or 50mm.
- **GLAZED UNITS:**
 - . Glazed panels, full height:
 - . Double glazing.
 - . Extruded aluminium profiles.
- **DOOR PANELS:**
 - . Aluminium or steel frame.
 - . Glazed leaf with / without frame, flush on both sides or corridor side.
 - . Steel or timber leaf.
- **JUNCTION BETWEEN SOLID PANELS:**
 - . Single line junction.
- **JUNCTION BETWEEN GLAZED UNITS:**
 - . For glazing of 10 or 12mm: frameless mechanical junction obtained through unique machining of the glass units and a dry jointed EPDM seal or through bonding.
 - . Corners for 10 or 12mm glazing: consisting of plain aluminium profile to protect angles from eventual impacts. Alternatively, these angles can be bonded.
 - . Double glazing 6 or 8mm: aluminium upright, 20mm wide.

FINISHES

- **SURFACE TREATMENT:**
 - . After surface treatment by alkaline degreasing and nanoceramic conversion of the skins and accessories, application of thermosetting polyester powder paint, oven-cured at 180°C (thickness $70 \pm 10\mu\text{m}$). The paint gives a decorative surface that is shock and UV resistant.
- **COLOURS:**
 - . Colours in Clestra Hauserman chart.
 - . Others: upon technical approval.
- **ALUMINIUM PROFILES:**
 - . Painted or natural anodized finish.
 - . Other anodization optional.
- **SOLID DOOR PANELS:**
 - . Steel within Clestra Hauserman chart.
 - . Timber, laminated or veneered.

- **GLAZING:**
 - . Film, sand blasting, stained glass.

OPTION

- **AIRFLOW :**
 - . A range of air transfer panels are available.
 - . Performance data is available from our technical team (acoustic value and air flow curves).

GEOMETRICAL FEATURES

- **DIMENSIONS:**
 - . Height:
 - . Solid panels:
 - Units $\leq 1000\text{mm}$: 3200mm.
 - Units $> 1000\text{mm}$: 3000mm.
 - . Glazed panels:
 - Type and glazing thickness according to national standards.
 - . Width:
 - . Standard unit: 900 - 1000mm.
 - . 1350mm max for solid panels.

FITTING CHARACTERISTICS

- **TOLERANCES:**
 - . With 35mm channels: up to $\pm 18\text{mm}$.
 - . With 50mm channels: up to $\pm 30\text{mm}$.
 - . Deflection track available: $\pm 25\text{mm}$.

USE

- **PARTITION ADD-ONS:**
 - . Our range of options and accessories can be used to tailor the partition to the specific needs and user requirements (magnetic accessories).

ACOUSTICS

Weighted sound reduction index following EN ISO 717-1

- **SOLID PANEL:**
 - . up to $R_w [C ; C_{tr}] = 52 [-3 ; -10] \text{ dB}$

- **GLAZED PANELS:**
 - . **DOUBLE GLAZING WITH 20MM UPRIGHT:**
 - . up to $R_w [C ; C_{tr}] = 47 [-2 ; -6] \text{ dB}$
 - . **DOUBLE GLAZING FRAMELESS:**
 - . up to $R_w [C ; C_{TR}] = 49 [-1 ; -5] \text{ dB}$
- **DOORS:**
 - . **SOLID DOOR:**
 - . up to $R_w [C ; C_{tr}] = 41 [-1 ; -3] \text{ dB}$
 - . **GLAZED FLUSH DOOR:**
 - . up to $R_w [C ; C_{tr}] = 39 [-1 ; -2] \text{ dB}$
 - . **POCKET SLIDING DOOR WITH PARTITION:**
 - . up to $R_w [C ; C_{tr}] = 44 [-1 ; -4] \text{ dB}$

CERTIFICATIONS

- **MECHANICAL:**
 - . Structural test according to ETE.
- **VOLATILE ORGANIC COMPOUNDS (VOCs):**
 - . A+ french classification according to ISO 16000.
 - . EQ-credit LEED « Low-emitting products ».
- **FACTORY CERTIFICATIONS:**
 - . Our factories are ISO 9001, ISO 14001 and OHSAS 18001 certified.

ACCESSORIES

Clestra Hauserman offers a wide range of partition accessories, provided with clever self-fastening systems. www.clestrashop.com

Our products are constantly changing. To find out about the latest approved acoustic performances, please visit www.clestra.com.

