

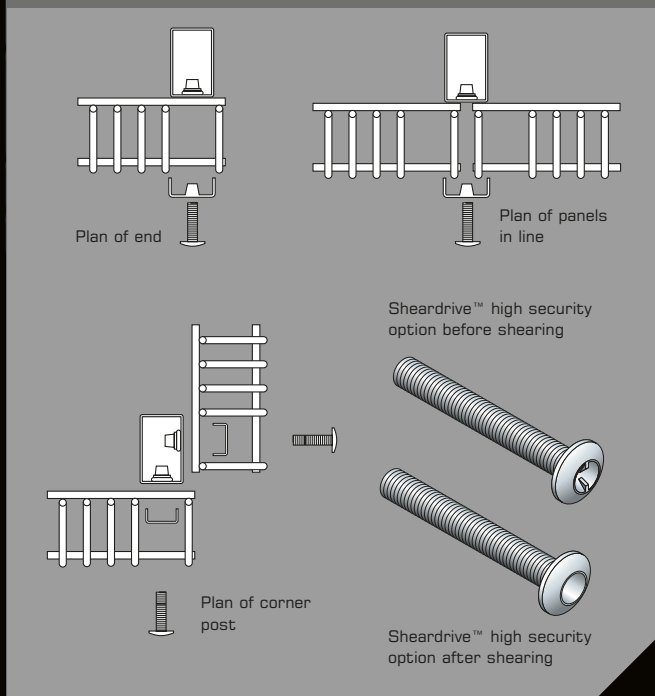
Multiplus™ Profiled panel system



Experience the Difference...

[< Click here to navigate back to the quick reference guide](#)

System details



Multiplus posts and clips

For the Multiplus profiled panel system, CLD offers a standard post and clip system which provides a complete method of securing, allowing stepping of panels. It is versatile, strong, simple to fix and vandal-resistant, yet allows panels to be removed without damage to either post or clip. Accidentally damaged panels can be replaced without removing the post.

Description

The RHS posts are supplied complete with a 3 mm thick clip that locates down the side of the post, fixed with M8 bolts into threaded inserts. Alternative method of fixing is available as Sheardrive™ or through fixing cup square bolts and shear-nuts.

Finish

All posts are galvanised and polyester powder coated to give a durable finish. The clips are galvanised and then powder coated. Available in the RAL range of colours to match the fencing panels.

Dimensions

Posts: 60 x 40 mm RHS
Clips: 47 x 25 x 3 mm
Post centres: 3020 mm

Sloping ground

Panels can be stepped as required. Where gradients exceed 1:20, it is recommended that taller panels are either part-buried or additional posts are used.

Variations

In addition to the standard posts many variations are available to accommodate site requirements:

- alternative sections
- wall fixing plates, cranked posts or base plated
- cranked or straight extensions for barbed or razor wire
- cranked panels



Find out more

Scan this QR code with your smart device to instantly access our website and find out what CLD can do for you.

All information contained within this document including technical details, graphics and photographs are copyright © CLD Fencing Systems 2013. This document may not be reproduced, copied, transmitted or stored in any form without written permission from CLD Fencing Systems.

All information correct at time of printing. We reserve the right to alter specification without notice.

Head office:

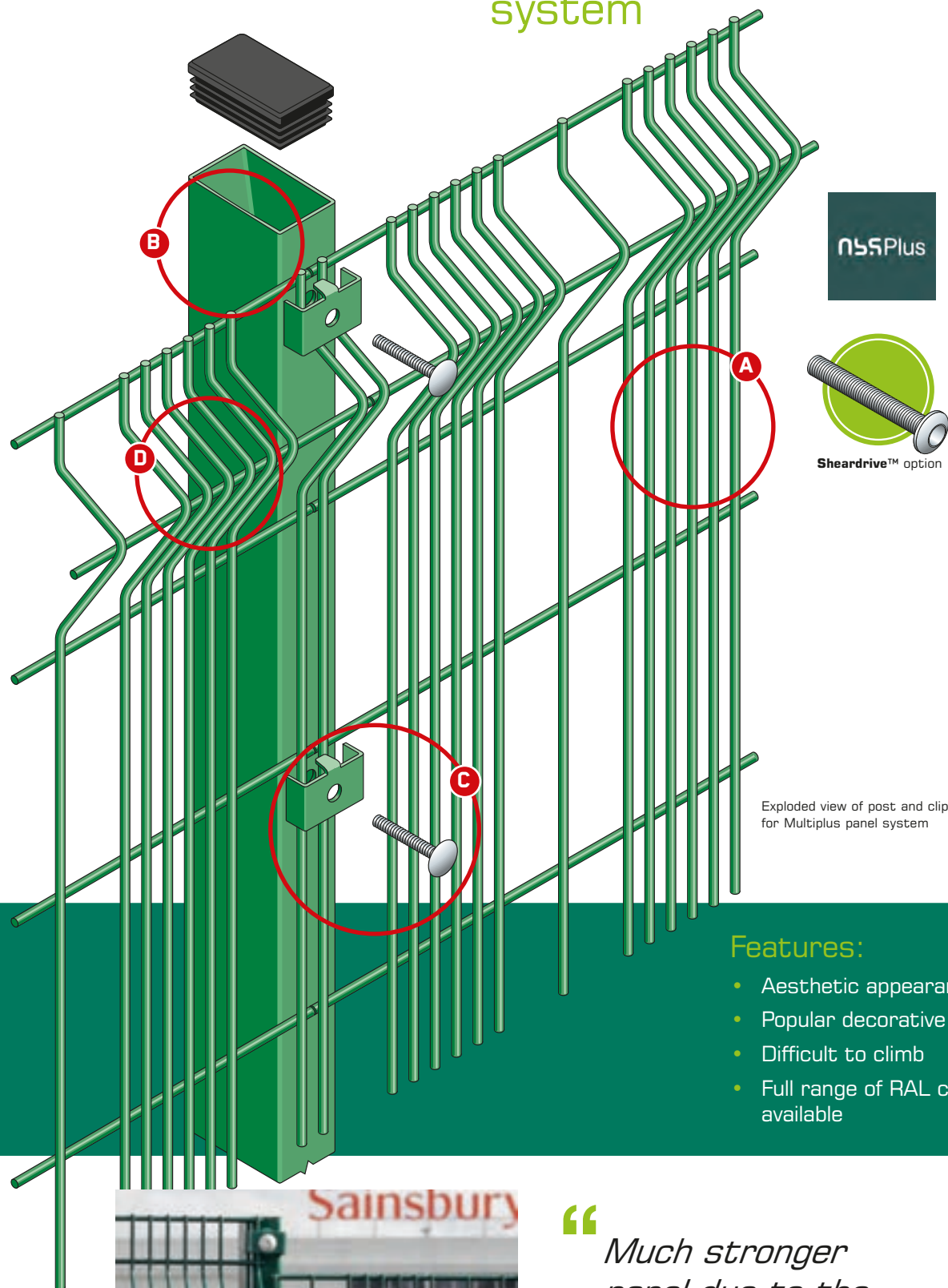
Unit 11, Springvale Business Centre, Millbuck Way, Sandbach, Cheshire, CW11 3HY

T +44(0)1270764751 F +44(0)1270757503

E-mail sales@cl-d-fencing.com

www.cld-fencing.com

Multiplus™ Profiled panel system



Exploded view of post and clip for Multiplus panel system



Sheardrive™ option

A Anti-climb close mesh

B Galvanised and polyester powder coated RHS post

C Steel security clip with pin hex bolts for added security

D Profiled for extra strength

Conforms to **BS1722: Part 14**



Find out more
Scan this QR code with your smart device to instantly access even more information.



Description

The Multiplus system is a welded mesh panel with horizontal profiles to form a rigid fence. The mesh configuration is unique to the Multiplus system due to the larger wire diameters and the variable mesh aperture. The overall visual effect is extremely attractive and will enhance any prestigious project. The level of security is good and will resist climbing.

Panel dimensions

Heights	1800, 2000, 2400, 3000 mm
Panel width	3010 mm
Mesh size	200 x 45 mm (200 x 15 mm) variable
Wire diameter	4 mm verticals 5 mm horizontals
Triangular folds	3

Finish

Galvanised and polyester powder-coated, after stringent cleaning and treatment, to give a well adhered coating of a minimum of 60 microns. The full RAL range of colours are available.

Specification clauses

To be read with Preliminaries/General conditions.

Open mesh steel panel general purpose fencing/gates

- Manufacturer & Ref: CLD Fencing Systems www.cld-fencing.com, Tel. 01270 764751, CLD Multiplus Profiled Panel System.
- Height:* Nominal height:* Mesh & wire: 200 x 45 mm (200 x 15 mm) mesh; 4/5/6 mm wire with 3 profiles, galvanised and polyester powder-coated to a minimum of 60 microns.
- Posts: 60 x 40 mm RHS, galvanised after manufacture and polyester powder-coated.
- Fixings: M8 x 40 pin-hex security screw.
- Maximum post centres: 3020 mm.
- Set posts: Set posts in holes 300 mm diameter x 750** mm deep, filled not less than half the depth with concrete.
- Bottom of fencing to be approx. 50 mm above final ground level.
- Other requirements: PPC Colour Green RAL 6005.
- Sheardrive™ fixing if required instead of pin hex.

* See specification, above, for available heights.

** Depending on fence height

Features:

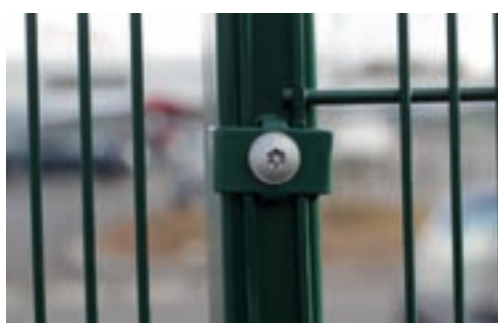
- Aesthetic appearance
- Popular decorative effect
- Difficult to climb
- Full range of RAL colours available

Suitable for:

- Public buildings
- Schools
- Industrial buildings



“ Much stronger panel due to the increased wire diameter... ”



FenceCAD
CAD Drawings for Security Fences & Gate Systems

Drawn by Architects for Architects
Visit www.cld-fencing.com/login.php

