

# CLARKE INSTRUMENTS LTD

At the heart of innovative security solutions for the control of access since 1969

## Electric Releases

### Type 976 Rim Latch

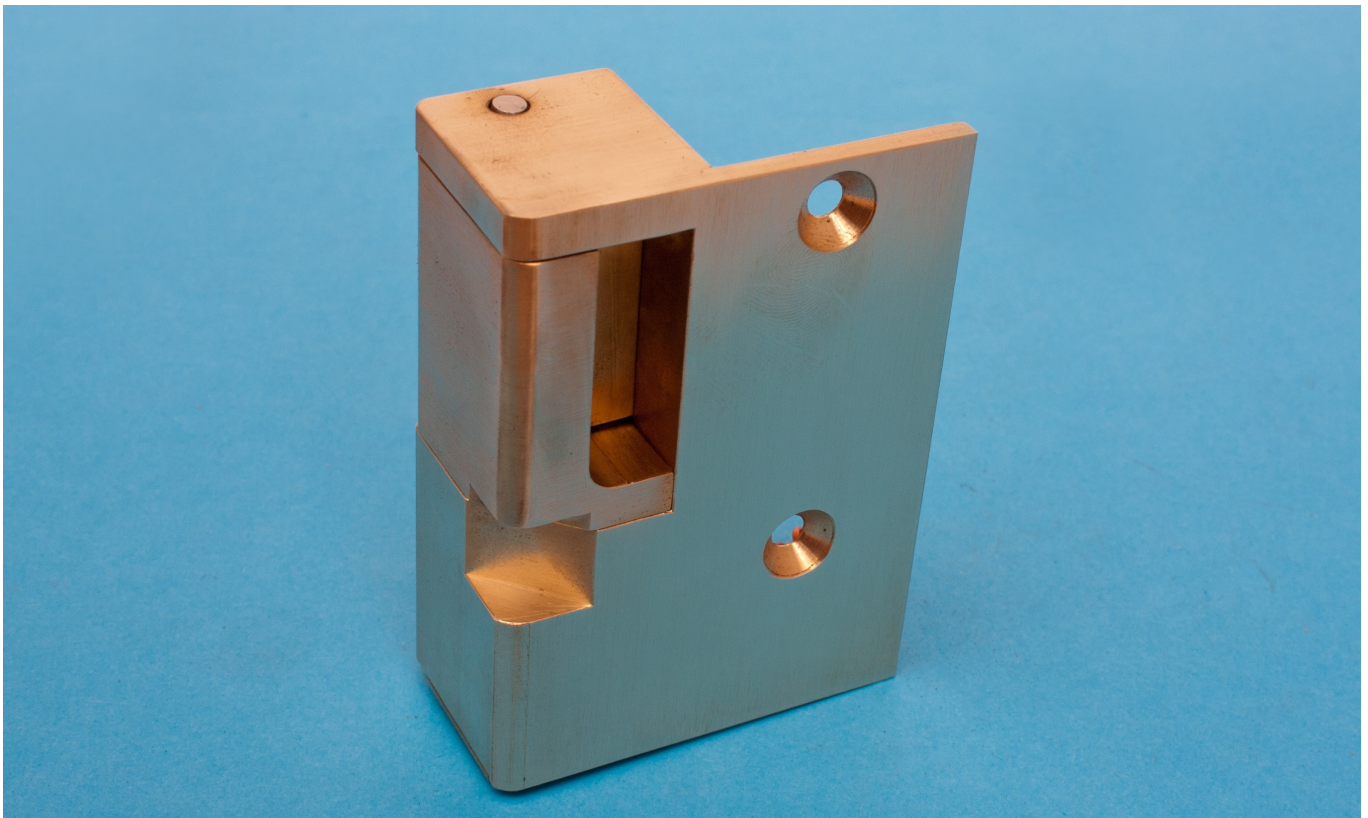
Suitable for the control of access on inward opening external doors

#### Specification

- ◆ 12VDC 100% fail locked
- ◆ Current consumption 0.3A
- ◆ Precision machined from solid brass
- ◆ Locking plunger - 8mm diameter stainless steel
- ◆ Withstands up to 10KN
- ◆ Suits wood frames

#### Optional Extras

- ◆ 24VDC, 50VDC
- ◆ Fail open on power failure
- ◆ Micro switch sensing
- ◆ Compatible with Rim lock Ingersoll SC71



Designed and manufactured in the UK by Clarke Instruments Ltd

#### **CLARKE INSTRUMENTS LIMITED.**

Distloc House, Old Sarum Airfield,  
The Portway, Salisbury, Wiltshire, SP4 6DZ  
Web: [www.clarke-inst.com](http://www.clarke-inst.com)  
Email: [sales@clarke-inst.com](mailto:sales@clarke-inst.com)



C.I.L. Products comply with  
EMC Directives of EEC  
Certificate Number FM 12702  
BS EN ISO9001:2008

