



Precision II



Heavy Contract

Loop Pile

Carpet Tile



Precision II

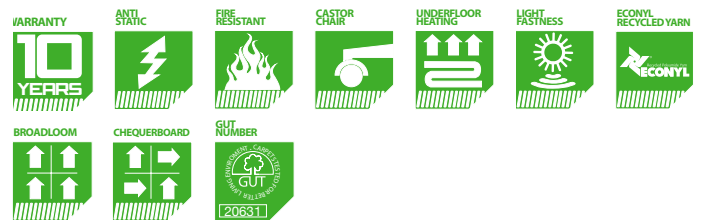
Carpet Tile Heavy Contract Loop Pile

A combination of recycled solution dyed nylon yarn and a high tuft density makes Precision II one of the most versatile loop pile carpet tiles around. Available in 27 exciting mottled colours.

CONSTRUCTION

Fibre Content	100% Recycled Solution Dyed Nylon
Gauge	1/10
Stitch Rate	38 per 10cm
Tuft Density	147750 per m ²
Backing	Bitumen
Pile Weight	580g/m ²
Pile Height	3.00mm
Total Weight	4585g/m ²
Total Height	6.80mm
Tile Size	50cm x 50cm
No of Tiles per box	20

All weights and thickness measurements ± 10%. All other dimensions ±1%



PERFORMANCE

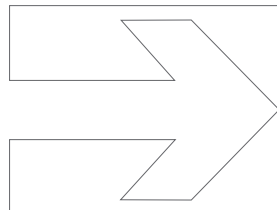
Static	ISO 6356
Electrical Resistance	ISO/DIS 10965 ≥10 ⁹ Ohm
Flammability	EN 13501-1 Bfl-s1
Dimensional Stability	BS EN 986
Castor Chair	BS EN 985
Underfloor Heating	Up to 27°C
Impact Noise Rating	ISO 10140 ΔL: 35 dB _(1000Hz)
Thermal Resistance	ISO 8302 0.055 qm K/W
Colour / Light Fastness	EN ISO 105 B02 to light EN ISO 105 E01 to water EN ISO 105 X12 to wet and dry rubbing

INSTALLATION

This product must be fitted in accordance with the CFS fitting instructions which are available on request by contacting the local Carpet & Flooring branch.

RECOMMENDED ADHESIVES

F Ball F41 tackifier, Laybond 79 & Mapei ECO Tack



SAMPLING SERVICE

If you require a large sample, please list the product name and colour followed by your address details and email to: samples.redditch@carpetandflooring.co.uk

CFS PRODUCTS EXCLUSIVELY
DISTRIBUTED BY:



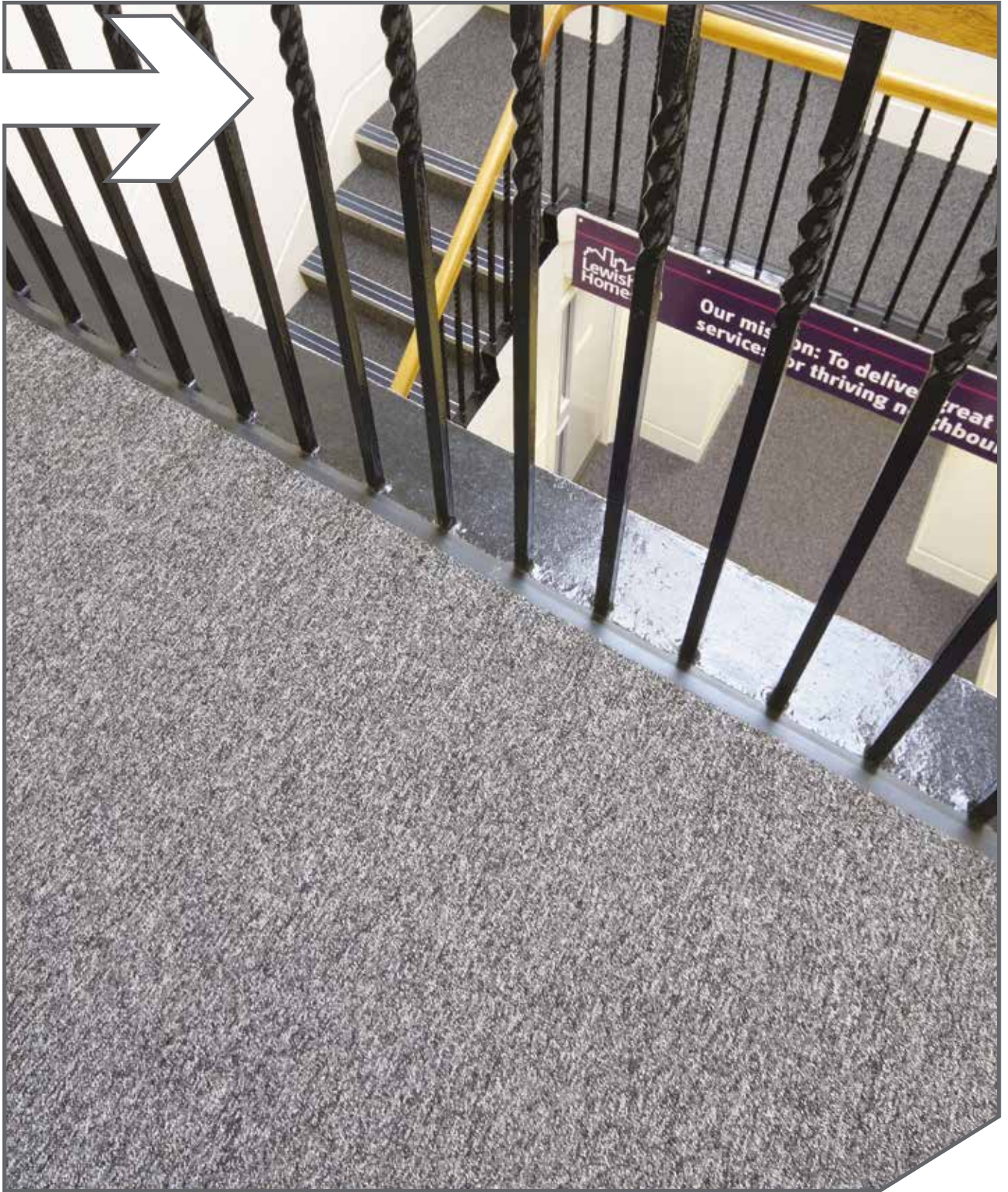
All images used are for illustrative purposes only. All images are intended to give a general indication of the proposed floor layout only.

Aberdeen T: 01224 546 730 F: 01224 546 731	Birmingham T: 0121 421 9131 F: 0121 421 9132	Bow T: 0208 525 5691 F: 0208 533 1268	Bristol T: 0117 316 0555 F: 0117 300 3588	Camberley T: 01276 672100 F: 01276 672200	Cambridge T: 01954 782 224 F: 01954 789 011	Cardiff T: 029 2099 0460 F: 029 2099 0461	Colindale T: 020 7127 6770 F: 020 7127 6771	Gateshead T: 0191 482 7373 F: 0191 487 8250	Glasgow T: 0141 427 8456 F: 0141 427 8455	Manchester T: 0161 786 6800 F: 0161 786 6801
--	--	---	---	---	---	---	---	---	---	--

CFS Carpets reserves the right to improve specifications without prior notice.

www.cfscarpets.co.uk

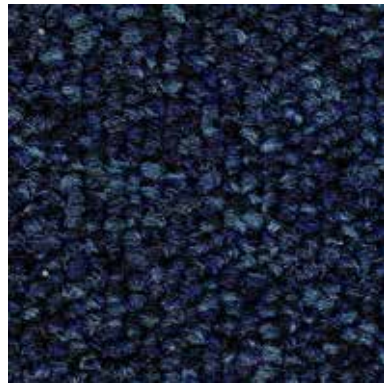
FOLDER CODE: SAMCFSF / PRECI
Made in EU 07/2014
Issue 1



Precision II - Light Grey - 907



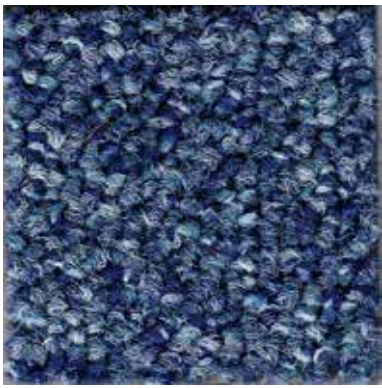
Dark Blue - 541



Evening Blue - 524



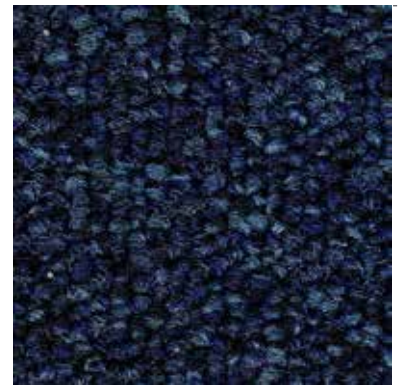
Light Blue - 567



Sky Blue - 505



Haze - 509



Shadow - 415



Granite - 965



Soot - 993



Slate - 918



→ Tarmac - 603



→ Light Grey - 907



→ Cloud Grey - 915



→ Mist - 817



→ Stone - 807



→ Pepper - 845



→ Wheat - 108



→ Barley - 152



→ Corn - 795



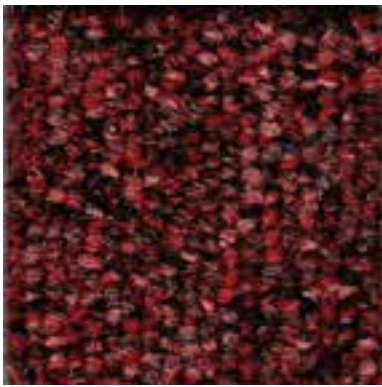
→ Coffee - 822



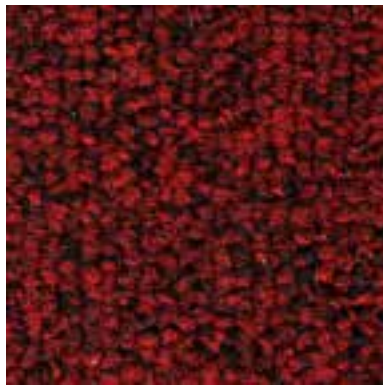
→ Nutmeg - 812



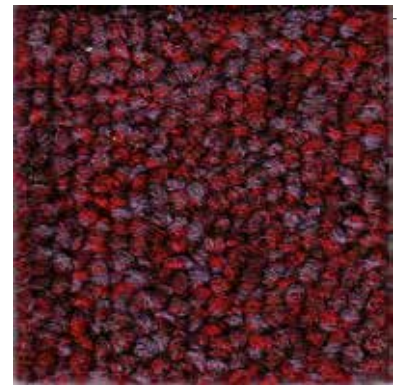
→ Sherbet - 299



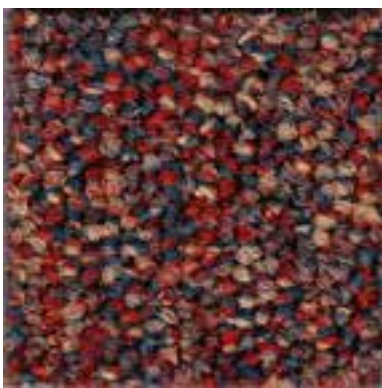
→ Crimson - 332



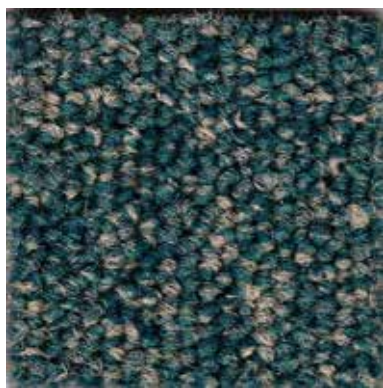
→ Red - 310



→ Claret - 395



→ Sunset - 321



→ Light Green - 639



→ Dark Green - 644