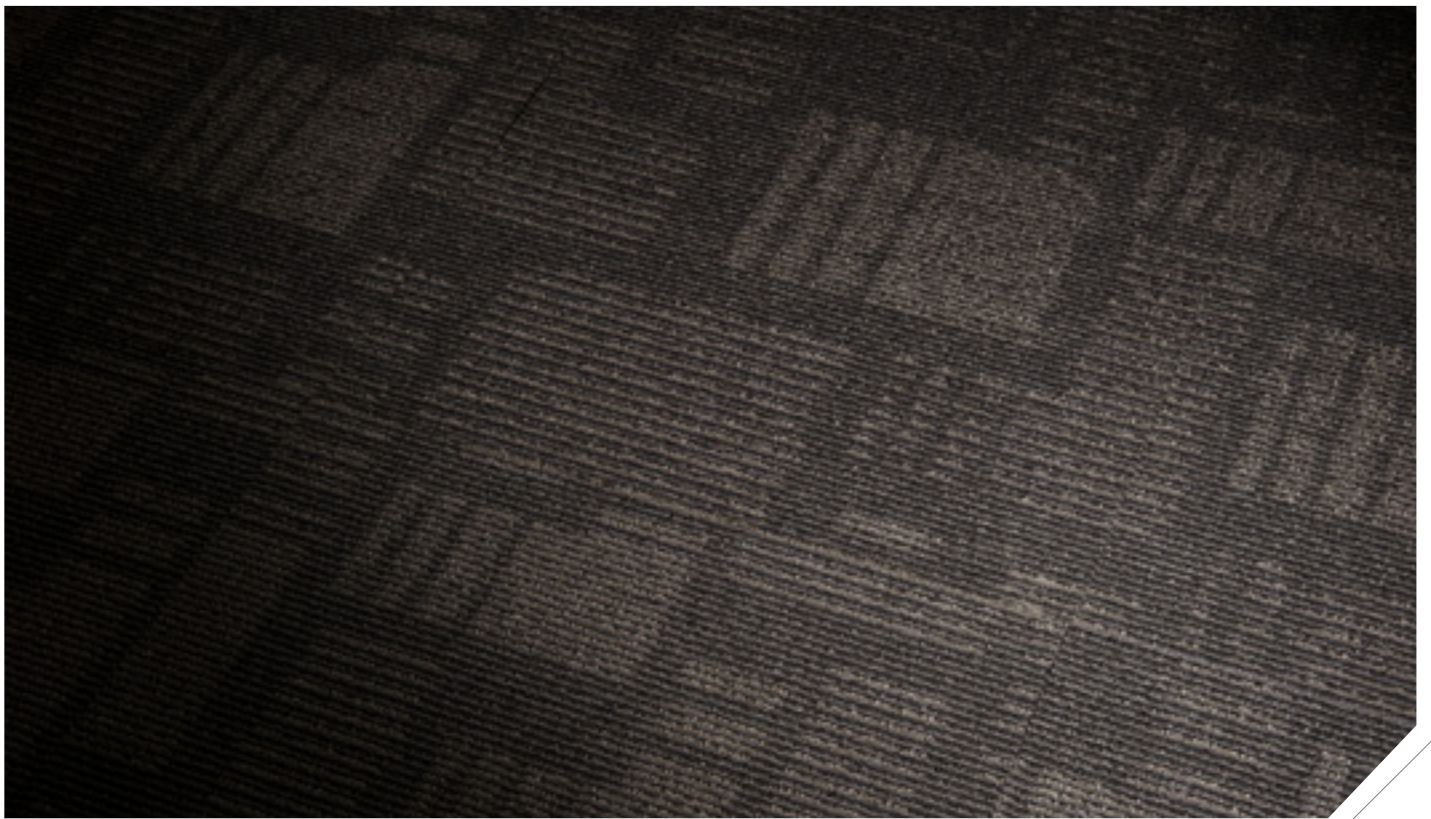




# Concept



Heavy Contract

Structured Loop Pile

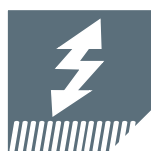
Carpet Tile



WARRANTY



ANTI  
STATIC



FIRE  
RESISTANT



CASTOR  
CHAIR



UNDERFLOOR  
HEATING



SOLUTION  
DYED FIBRE



LIGHT  
FASTNESS



# Concept

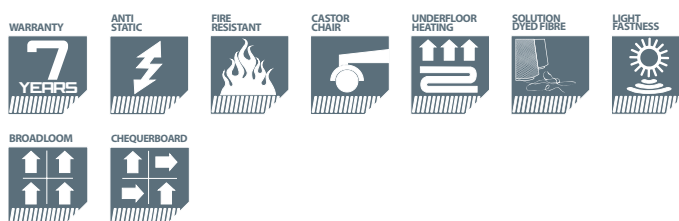
## Carpet Tile Heavy Contract Structured Loop Pile

### CONSTRUCTION

Fibre Content	100% Solution Dyed Olefin
Gauge	1/12
Stitch Rate	47 per 10cm
Tuft Density	218040 per m <sup>2</sup>
Backing	Vinyl
Pile Weight	800g/m <sup>2</sup>
Pile Height	4.00mm
Total Weight	4800g/m <sup>2</sup>
Total Height	7.50mm
Tile Size	50cm x 50cm
No of Tiles per box	20

All weights and thickness measurements ± 10%. All other dimensions ±1%

Made with 100% Solution Dyed Polypropylene this sophisticated and distinctive range is part of a new generation of polypropylene tiles, combining high style with a budget price. A high performance PVC backing allows for easier cutting, installation and flexibility over a conventional bitumen backed product.



### PERFORMANCE

Static	Stroll Test
Electrical Resistance	IBM/ICL
Flammability	ASTM D-2859 // FF 1-10 // CFR 1630 Pass 8/8 Radiant Panel: BS EN ISO 9239-1 assessed to BS EN 13501-1 Class Dfl-s1
Dimensional Stability	DIN 54318
Castor Chair	BS EN 985
Underfloor Heating	Up to 27°C
Colour / Light Fastness	AATCC-16E to Light AATCC-164 to NO <sub>2</sub>

### INSTALLATION

This product must be fitted in accordance with the CFS fitting instructions which are available on request by contacting the local Carpet & Flooring branch.

### RECOMMENDED ADHESIVES

F Ball F41 tackifier, Laybond 79 & Mapei ECO Tack



### SAMPLING SERVICE

If you require a large sample, please list the product name and colour followed by your address details and email to: [samples.redditch@carpetandflooring.co.uk](mailto:samples.redditch@carpetandflooring.co.uk)

CFS PRODUCTS EXCLUSIVELY  
DISTRIBUTED BY:



<b>Birmingham</b> T: 0121 421 9131 F: 0121 421 9132	<b>Bow</b> T: 0208 525 5691 F: 0208 533 1268	<b>Bristol</b> T: 0117 316 0555 F: 0117 300 3588	<b>Camberley</b> T: 01276 672100 F: 01276 672200	<b>Cambridge</b> T: 01954 782 224 F: 01954 789 011	<b>Gateshead</b> T: 0191 482 7373 F: 0191 487 8250	<b>Glasgow</b> T: 0141 427 8456 F: 0141 427 8455	<b>Manchester</b> T: 0161 786 6800 F: 0161 786 6801
---	--	--	--	--	--	--	---



⇒ 877



⇒ 852



⇒ 858



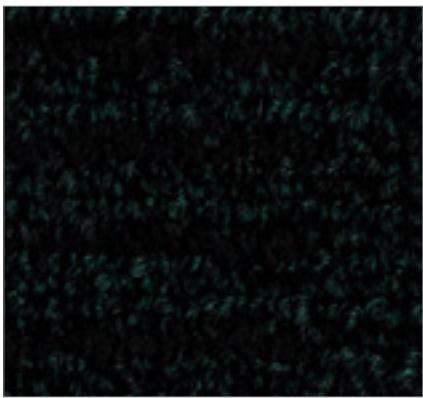
⇒ 875



⇒ 872



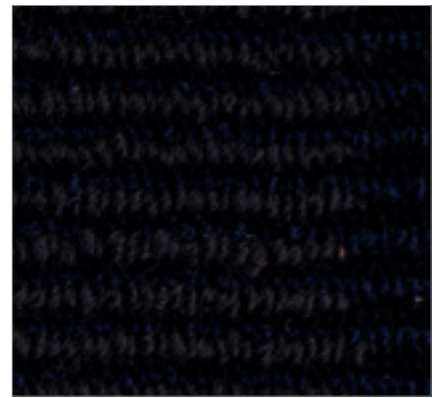
⇒ 826



⇒ 864



⇒ 867



⇒ 859