

## CASE STUDY: BUILDING MATERIALS

# HISTORIC SITE USES PRE-HISTORIC BENTONITE IN NOTTINGHAM

**PROJECT:** Centre for Contemporary Art

**LOCATION:** Nottingham, England

**PRODUCTS:** Voltex, Waterstop RX101, Vorseal 250

**CLIENT:** Sol/ROK, Northfield Construction Ltd

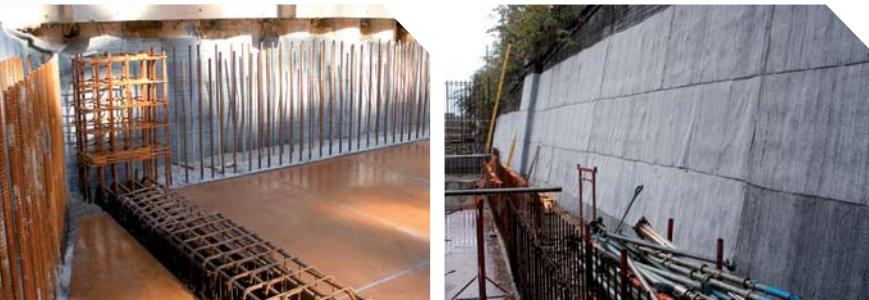
**BACKGROUND:** Following an international competition in 2004, architects Caruso St John won the opportunity to design the gallery, one of the largest contemporary arts centres in the UK. Situated on the oldest site in Nottingham, Garners Hill in the historic Lace Market, the area once housed cave dwellings, a Saxon fort and a Medieval town hall – before the Victorians swept all aside for a railway line.

**CHALLENGE:** The development was situated on a tricky sloping site, with a 13 metre drop between the gallery's entrance in High Pavement, and the lower border on Cliff Road.

The open site had historically been a Victorian railway cutting with an old, blue brick embankment on the west with the northern and western walls formed from the natural sandstone, familiar throughout Nottingham. Large pipes serving the city centre's district heating system ran through the site and had to be retained.

**SOLUTION:** Northfield Construction had extensive experience in working with the Nottingham sandstone and utilised their own plant to scabble the rock faces so that Voltex could be applied directly to them. Once floor slabs had been poured, single-sided shutters were used to form the walls. Elsewhere on the site, Voltex was applied directly to the existing blue brick walls, which again acted as an in-situ back shutter. Where space allowed, construction was switched to traditional shuttered format with Voltex post-applied to the concrete.

**RESULT:** Following the success of the Voltex installation, some time after the concrete works were completed, CETCO Contracting were employed by Sol Construction to apply Vorseal 600 to the external concrete slab in front of the gallery cafeteria.



In the recent past, other gallery projects in the Midlands where Voltex has been used are: the Art Exchange in Nottingham and the extensions to the Herbert Art Gallery in Coventry and Wolverhampton City Art Gallery.

**For a free consultation for your next project, call a CETCO Waterproofing expert at +44 151 606 5900**

Birch House, Scott Quays, Birkenhead, Merseyside  
CH41 1FB +44 (0)151 606 5900

**CETCO**<sup>®</sup>

www.CETCO.com