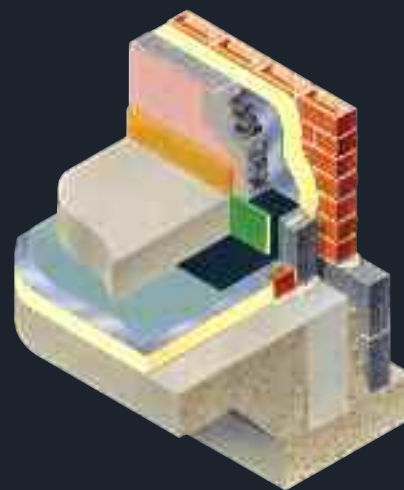


# Combination Edge Insulator

## Insulating / Acoustic Barriers with DPC interfacing

- Provides inner skin DPC
- Uninterrupted vertical protection
- Integrates with oversite membrane
- Insulation cushion to perimeter



### USE

Combination perimeter edge insulator for use where floors and walls meet to provide thermal, acoustic and DPC qualities

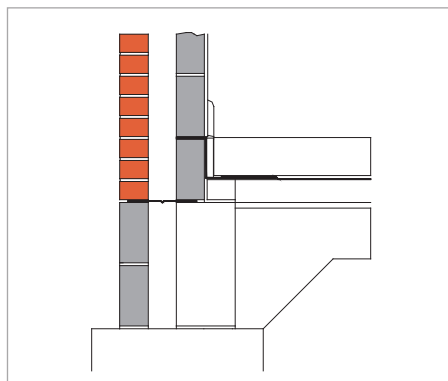
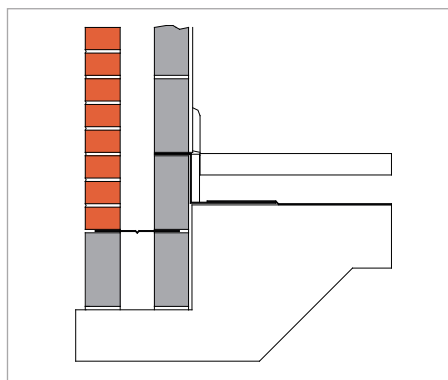
### SOLUTION

Ground bearing slab construction commonly requires perimeter edge insulation at its junction with all walls. Similar requirements exist with other forms of construction, to prevent cold-bridging. By selecting an appropriate combination edge insulator, the thermal and acoustic arrangement can be accompanied by damp-protection, acting in addition to or as part of the ground floor DPM configuration. The semi-rigid DPC is preformed at 90° to maintain shape and placement and provide easy lapping and interfacing with any adjacent DPM. Thus barriers can be incorporated at screed level (above slab) or below slab level, pending the DPM configuration. This extends the construction options available to meet requirements of Building Regulations and Robust Details where the overall resistance of the edge is required to achieve 3.04m<sup>2</sup>K/W minimum



Combination Edge Barriers can be supplied in a range of sizes in the following two formats:

1. DPC Edge barrier with attached encapsulated rock wool insulation.
2. DPC Edge barrier with foil-faced Urethane insulation.



### SPECIFICATION WORDING

Combination Edge Insulator by Cavity Trays of Yeovil Somerset BA22 8HU (01935 474769).

To provide DPC and edge insulation where floor screed / slab / terminates against an external wall.

State encapsulated mineral rock wool or foam insulator choice and dimensions.

#### PRODUCT NAME - GROUP

Combination Edge Insulators

#### PRODUCT DIMENSIONS

Lengths	2.44m
Thickness range	20mm - 50mm max
Height range	50mm - 150mm max
DPC height / inboard	50mm - 150mm x
	50mm - 200mm inboard
Cranked format	Extends to provide DPC to inner skin girth

#### ACTS AS DPC

Yes

#### ACTS AS ACOUSTIC CUSHIONING

Yes

#### ACTS AS INSULATOR

Yes

#### MATERIAL

Polypropylene DPC  
Mineral rock wool  
Polythene DPM encapsulation  
Urethane foam alternative with foil facing

#### INSULATION K VALUE

0.035 with mineral rock infill insulator  
0.022-0.028 with foil-faced urethane insulator

#### THERMAL CONDUCTIVITY OF INSULATING MEDIUMS ONLY

Options 0.038 to 0.033W/mK, Foil 0.125 m2K/W

#### COLOUR

Black DPC with green polythene sleeving

#### MANUFACTURING STANDARD

BS EN ISO 9001:2008

#### BUILDING REGULATIONS

Yes regulations can be satisfied

#### NHBC / ZURICH / PREMIER REQUIREMENTS

Yes requirements can be satisfied

#### PACK SIZES

Available individually

#### CFC FREE

Yes + zero ODP

#### ODP

Zero

#### ECO POINTS RATING

Low

#### CAD DRAWING DOWNLOADS AVAILABLE

Yes



### DESIGNERS' COMMENTS

Accepted construction details show the oversite membrane turning up and rising against the face of the inside skin, before returning into the DPC course. In practice there is insufficient membrane to achieve this where corners are inwardly-projecting, as the membrane cannot be stretched. Consequently patching using additional membrane is commonly introduced. The Perimeter Edge Insulator addresses this requirement in a different manner and in so doing eliminates the need to patch the membrane.