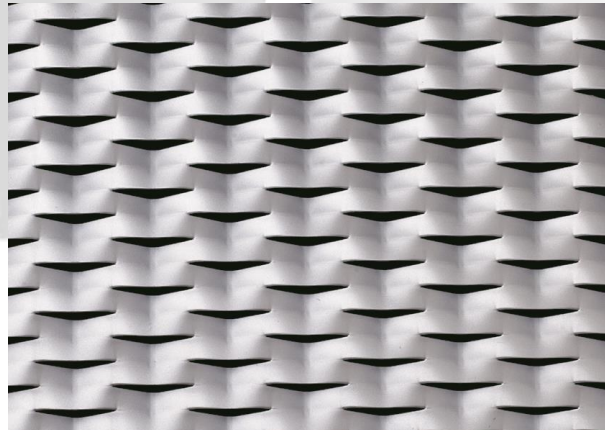


CADISCH



 MESHTEC

Idea



(Please note: this is not to scale)



Type:	Meshtec Idea
Mesh:	76mm (LWM) x 24mm (SWM)
Material:	Aluminium / Pre Galvanised Mild Steel
Thickness:	1.5mm / 2mm
Max Sizes:	LW 1000 – 1500 x SW 3000mm LW 2000 – 2500 x SW 1600mm
Visual Open Area:	13.3%
Air Flow Open Area:	56%
Finishes:	Anodised (Aluminium), Powder coated, Xerotec
NBS:	H31 Metal Profiled / Flat Sheet Cladding / Covering