



MADE IN BRITAIN
DISTRIBUTED WORLDWIDE

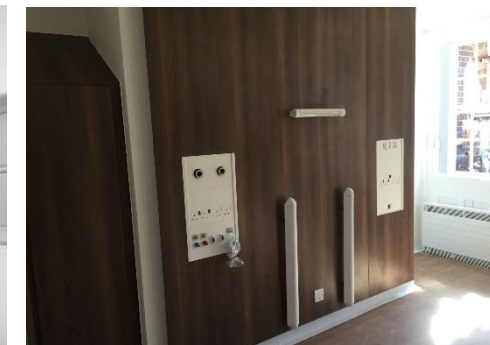
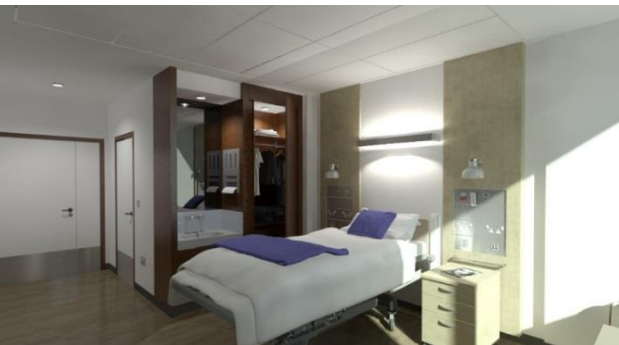
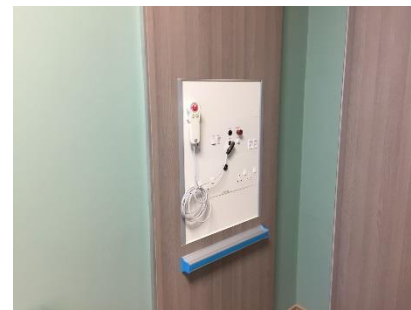
*The **TOTEM**TM medical gas outlet enclosure*



CABL  **FLOW**TM
H E A L T H C A R E

applications

CABLEFLOW™





MADE IN BRITAIN
DISTRIBUTED WORLDWIDE



THE QUEEN'S AWARDS
FOR ENTERPRISE:
INNOVATION
2005



Innovation is at the heart of an evolutionary healthcare infrastructure. Challenging boundaries whilst being respectful of clinical skills are two valued philosophies which ensure knowledge led developments in bedroom architecture.

At CABLEFLOW we recognise the need to be different, to ensure product development offers practical and sustainable progression whilst always ensuring full compliance with Patient Safety Standards and improving the clinical environment.

We are proud of our British healthcare heritage which offers universal application around the world. Having been conferred a prestigious Queens Award for Innovation our client's take confidence in that unique recognition as a market leader.

As Britain's leading medical supply unit manufacturer our range of solutions meet a vast array of design concepts throughout all clinical environments whether primary or tertiary care areas, and every speciality in-between.

In 2005 our **integra** product range became the first and only bedhead trunking system to achieve royal recognition with the conferment of a **Queens Award for Enterprise: Innovation** from Her Majesty Queen Elizabeth II.

Improving the clinical architecture, the patient experience and ensuring flexibility and adaptation in later use are hallmarks of our innovative integrated lighting solutions. At home in an acute hospital setting or more domestic environments such as Hospice's and the like our systems can be tailored to your requirements.



MEDICAL SUPPLY UNIT

TOTEM offers an extremely adaptable and attractive Medical Supply Unit which embodies our experience and innovative approach to bedhead services, all attained over many years and across thousands of installations worldwide.

The **TOTEM** presents sleek yet soft lines to an enclosure which clearly displays medical gas outlets in the patient environment in an aesthetically striking format, avoiding the disruption of penetrating walls and allowing a fully serviceable pipeline route to the terminal outlet. **TOTEM** is primarily a retro-fit option but may also be used in an initial stage of construction where speed of installation and pipeline accessibility are key.

BEDHEAD SERVICES

Whether used in general in-patient acute bedroom accommodation, higher dependency or elderly care/hospice settings **TOTEM** accommodates medical gas and vacuum pipelines and associated terminal outlets in any complexity and a variety of formations.

Where medical gas additions or adaptations are simply required the ease of install of **TOTEM** is an attractive proposition as it is in a new build scheme.

Retrofitting medical gas terminal outlets always presents an infection control risk with unsightly surface mounted pipelines clipped to the wall and terminal outlets in aesthetically compromised plastic enclosure boxes always at risk of damage. **TOTEM** changes this landscape and offers a solution to these constant healthcare environment issues.

Supplied in variable lengths to suit the co-ordination of ceiling heights with outlet mounting heights, **TOTEM** is a simple yet functional solution. Designed to be installed tight to the finished ceiling which allows the simple access of the medical gas pipelines through the ceiling, and where historical ceiling voids are otherwise congested in retrofit environments, the pipeline simply penetrates through the fibrous tile or board and into the medical supply unit enclosure with the end cap acting as a neat ceiling interface.

The constant changing healthcare estate requires both complex and minor installation amendments to suit need and also legislation or regulatory changes. This is none more so the case than for the provision of gases for medicinal use.

TOTEM has been developed within our overall family of medical gas accessories and medical supply units for those locations requiring simple medical gas outlet additions or adaptations and where all other services are unaffected.

DESIGN INNOVATION

With a shallow depth of 103mm the sleek and slim appearance ensures that valuable clinical wall space is not compromised. Amalgamating high grade laminates with neatly engineered, robust polyester powder coated side extrusions **TOTEM** is an effective, unobtrusive solution to medical gas outlet provision which avoids the cost, time and disruption of breaking into wall construction.

VARIABLE WIDTH APPLICATIONS

TOTEM is offered in three width versions **TOTEM1**, **TOTEM2** or **TOTEM3** subject to the orientation of outlets to be provided all meeting HTM 02-01 compliance.

The cleaning and environmental requirements of HBN 00-09 have been paramount in the design of this product, ensuring minimal surfaces which can either collect dust or harbour bacteria. All surfaces can be easily wipe-cleaned whilst facias can be simply removed or replaced with the use of a bespoke tool to facilitate deep bacterial cleaning when required. Tight-fitting joints reduce bacteria growth or entrapment risk and present a smooth protrusion-free finish.





FACIA PANELS

Facia panels are manufactured from 10mm thick fire retardant mdf, finished in a variety of laminates to suit the décor scheme selected with a rear-faced balancer.

Please contact our sales department for the choice of finishes from the worlds leading laminate manufacturers although on small volumes this may be restrictive.

As a standard off-the-shelf product we offer our extruded aluminium side sections and end caps in RAL 9003, and our facia panels in Formica Crystal White F3091.

The design of **TOTEM** offers a fixing free appearance and is fully HTM 08-03 and HTM 02-01 compliant.

FACTORY PRE-FABRICATION

TOTEM is offered as a fully factory assembled Medical Supply Unit to meet the purchasers exact requirements either gassed or ungassed. This approach allows for quick and simple installation on site.

In all cases the options are endless as the modular configuration of the **TOTEM** lends itself to purpose designed bedheads and bespoke customisation.

IMPACT RESISTANCE

Protecting the pipeline and terminal outlets is a core requirement of a Medical Supply Unit. The construction of **TOTEM**, utilising polyester powder coated steel end caps (aluminium if in MRI rooms) and extruded aluminium side sections ensures the impact resistance requirements as defined in BS ISO 11197:2016 are satisfied.



MEDICAL GAS TERMINAL OUTLETS

As with all of our Medical Supply Unit containment systems across our extensive range, **TOTEM** is able to accommodate any manufacturers type of medical gas terminal outlets, each hospital or installer having a preference for a particular outlet.

Gas pipelines are fully accessible behind a removable facia cover and the outlet or pipeline maintained in total safety without the need to dismantle ceilings. The number of gas specific outlets which can be fitted varies depending on the exact product configuration selected.

FACTORY PRE-GASSING

Every **TOTEM** can be supplied ungassed or gassed with internal 15mm medical grade pipelines and terminal outlet assemblies all fully tested in accordance with HTM 02-01, and from all major manufacturers. This approach aids the speed of installation on site and of course improved opportunity to meet budget expectations.

PRODUCT FAMILY

All of our Medical Supply Unit containment systems have a unified approach to appearance and engineering philosophy, so no matter what clinical area they are applied to there is a consistency of appearance and maintenance understanding.



MEDICAL EQUIPMENT RAIL

Medical equipment rail for mounting collection jars or catheter dispensers is easily accommodated to meet any or all of the recommended mounting heights for Rail defined in HTM 08-03.

Our CABLEFLOW Medical Equipment Rail (see separate brochure) is designed and manufactured to meet the requirements of BS ISO 19054 and is also available as a standard wall mount version so that other clinical areas can be appropriately matched.

INSTALLATION

The **TOTEM** system does not use proprietary first fix mounting plates and therefore can be installed by any competent tradesman directly to almost any wall structure with appropriate fixings to suit the application.

At CABLEFLOW we have recognised the desire of some clients to procure a total supply and installation package from a specialist manufacturer and our experienced Contracts Department specialises in the installation of our trunking systems. Please contact us for further information and costings for your specific requirement.

All Cableflow installation technicians are trained to the highest standards, and equipped with the most up to date machinery to achieve the best possible result when our products and their skills are combined.

CERTIFICATION AND COMPLIANCE

As a core element of the medical gas pipeline system the **TOTEM** enclosure is fully compliant with the constructional and performance requirements of BS ISO 11197:2016.

Naturally ventilated by virtue of its design to meet the requirements of the standard where oxidising gases are installed, **TOTEM** provides a sleek and adaptable solution with safety at the very core of the product concept.

All of our system solutions have been independently tested and CE marked.

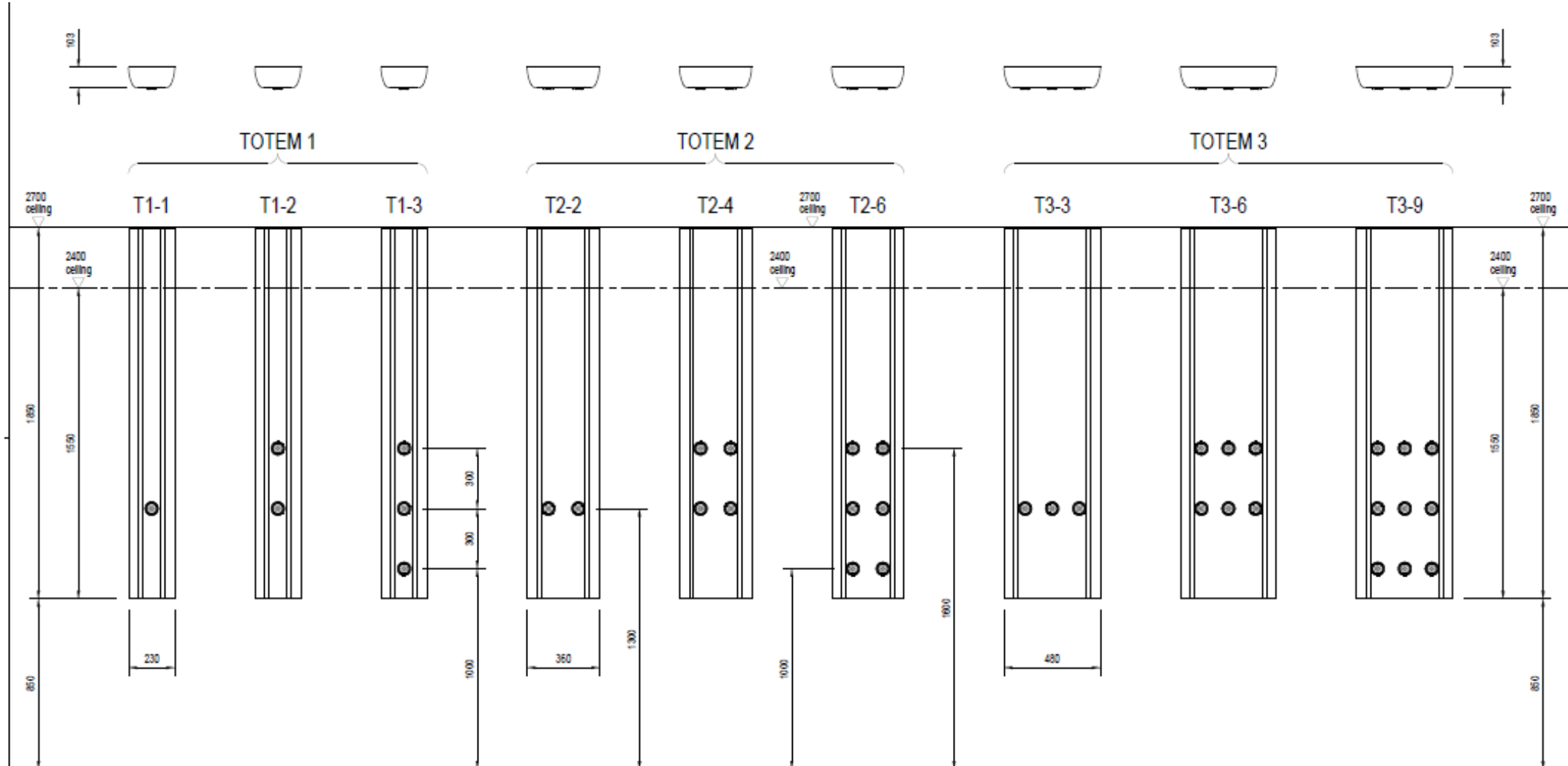
Each **TOTEM** is supplied complete with a manufacturers Declaration of Conformity as meeting the Essential Requirements of the Medical Device Regulations (MDR).





STANDARD AND BESPOKE OPTIONS

TOTEM is designed for quick installation and quick delivery. Each product style is available in a variety of configurations as standard to suit the gas outlet quantities required, with appropriate mounting heights as defined in HTM 02-01 and when considered with the floor-to-ceiling height of the specific application. The following configurations are available for either a 2400mm or 2700mm ceiling height (add ../24 or ../27 to the end of the product specification code e.g: TOTEM 1.1/24) as standard. Where a specific application is required a template is available which can be completed and issued with your enquiry or order and can be manufactured as a bespoke item.

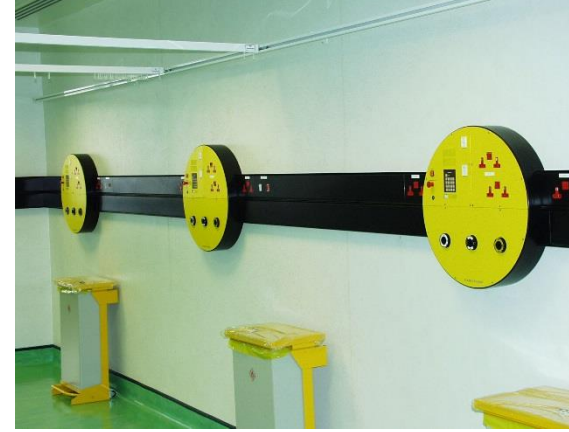


Standards compliance

Document Reference	Document Description
BS 476-10: 2009	Fire tests on building materials and structures. Guide to the principles, selection, role and application of fire testing and their outputs
BS 7671:2018	Electrical installations of buildings (includes requirements for special installations medical locations Section 710)
BS 8300:2009+A1:2010	Design of buildings and their approaches to meet the needs of disabled people. Code of practice
BS EN ISO 7599:2010	Anodizing of aluminium and its alloys. General specifications for anodic oxidation coatings on aluminium (formally BS EN 12373:2001)
BS EN ISO 9170-1:2017	Terminal units for medical gas pipeline systems. Terminal units for use with compressed medical gases and vacuum (formally BS EN ISO 9170-1)
BS EN ISO 9170-2:2017	Terminal units for medical gas pipeline systems. Terminal units for anaesthetic gas scavenging systems (formally BS EN 737 -4)
BS EN 12206-1:2004	Paints and varnishes. Coating of aluminium and aluminium alloys for architectural purposes. Coatings prepared from coating powder
BS EN 50083-2:2012	Cable networks for television signals, sound signals and interactive services. Electromagnetic compatibility for equipment
BS EN 50085-1:2005+A1:2013	Cable trunking systems and cable ducting systems for electrical installations. General requirements
BS EN 50085-2: 2006	Cable trunking systems and cable ducting systems for electrical installations. Cable trunking systems and cable ducting systems intended for mounting on walls and ceilings
BS EN 60529:1992+A2:2013	Degrees of protection provided by enclosures (IP code)
BS EN 60601-1-6:2010+A1:2015	Medical electrical equipment. General requirements for basic safety and essential performance. Collateral standard. Usability
BS EN 60601-1-2: 2007	Medical electrical equipment. General requirements for basic safety and essential performance. Collateral standard. Electromagnetic compatibility. Requirements and tests
BS EN 61000-6-3:2007+A1:2011	Electromagnetic compatibility (EMC). Generic standards. Emission standard for residential, commercial and light-industrial environments (formally BS EN 50081-1)
BS EN 61000-6-4:2007+A1:2011	Electromagnetic compatibility (EMC). Generic standards. Emission standard for industrial environments (formally BS EN 50081-2)
BS EN 61000-6-1:2007	Electromagnetic compatibility (EMC). Generic standards. Immunity for residential, commercial and light-industrial environments (formally BS EN 50082-1)
BS EN ISO 7396-1:2016	Medical gas pipeline systems. Pipeline systems for compressed medical gases and vacuum
BS EN ISO 11197:2016	Medical supply units
ISO 19054	Rail Systems for supporting medical equipment

Document Reference	Document Description
HBN 00-03	Designing generic clinical and clinical support spaces
HBN 00-04	Circulation and communication Spaces (inc supplement 1 - Isolation facilities for infectious patients in acute settings)
HBN 00-09	Infection control in the built environment
HBN 04-01	Adult in-patient facilities: planning and design
HBN 04-02	Critical care units
HBN 6	Facilities for Diagnostic imaging and interventional radiology:
HBN 07-01	Satellite Dialysis Unit
HBN 07-02	Main Renal Unit
HBN 09-02	Maternity Care Facilities
HBN 09-03	Neonatal Units
HBN 57: 2003	Facilities for critical care
HTM 02-01	Medical gas pipeline systems
HTM 06-01:2017	Electrical services: supply and distribution
HTM 06-02	Electrical safety guidance for low voltage systems
HTM 08-03	Management of bedhead services in the health sector
HTM 17	Health Building Engineering Installations
HTM 2014	Abatement of electrical interference
HTM 2020	Electrical safety code for low voltage systems
NHS SPEC C49: 1997	Nurse Call Systems. Revision 3
93/42/EEC	Medical Devices Directive
EU 2017/745	The EU Regulation on Medical Devices (in transition)







MADE IN BRITAIN
DISTRIBUTED WORLDWIDE

CABL  FLOW™

Cableflow
International
Limited

For full product data sheets go to our website or contact us directly

www.cableflow.com

Cableflow International Limited
Windsor House | Abbey Barn Road
High Wycombe | Buckinghamshire
HP11 1NN | United Kingdom

(tel) 00 44 (0) 1494 52 88 11
(fax) 00 44 (0) 1494 52 11 88
(email) sales@cableflow.com

Registered in England 2356618

Copyright 2019 v1

