



**MADE IN BRITAIN**  
DISTRIBUTED WORLDWIDE

# Potential Equalisation Socket - OEM

[Equipotential Bonding Socket]



**CABL  FLOW™**  
H E A L T H C A R E



MADE IN BRITAIN  
DISTRIBUTED WORLDWIDE

## POAG-PES Potential Equalisation Socket – OEM

The Cableflow **POAG-PES** range offers alternative and sustainable OEM options for the provision of potential equalisation (equipotential bonding) sockets within medical supply units and other proprietary Medical Electrical (ME) equipment applications.

### APPEARANCE CHOICES

The POAG-PES is available in two appearance options.

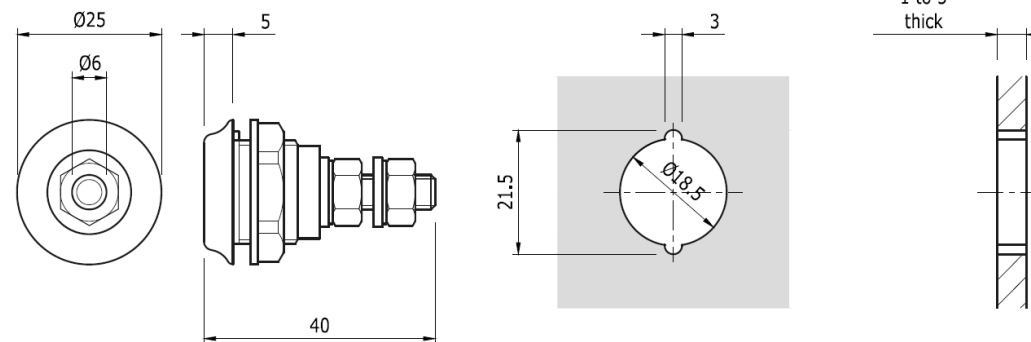
Primarily manufactured as a solid green injection moulding (**POAG-PES-G**) with an internal yellow inlay to identify the PES in accordance with IEC 60 364 colour coding, the appearance readily identifies the PES as an earth connection.

Alternatively, available as a clear polycarbonate insulation housing (**POAG-PES-C**) which encapsulates a green/yellow micro-film label. The design of our moulding has been carefully considered to create optics which work simultaneously with the label to magnify the image and colour-coding from all viewable angles whilst identifying it a potential equalisation (supplementary equipotential bonding) socket in accordance with IEC 60601-1.

In both design options the insulation housing holds a POAG 6/40 connecting pin manufactured to DIN 42801 for proprietary lead connection. The POAG pin is fully insulated from any mounting point by the moulding and incorporates an anti-rotation pip for ease of fixing. The exposed tip of POAG pin displays the IEC 60417-5021 symbol for potential equalisation etched into the surface for durability.

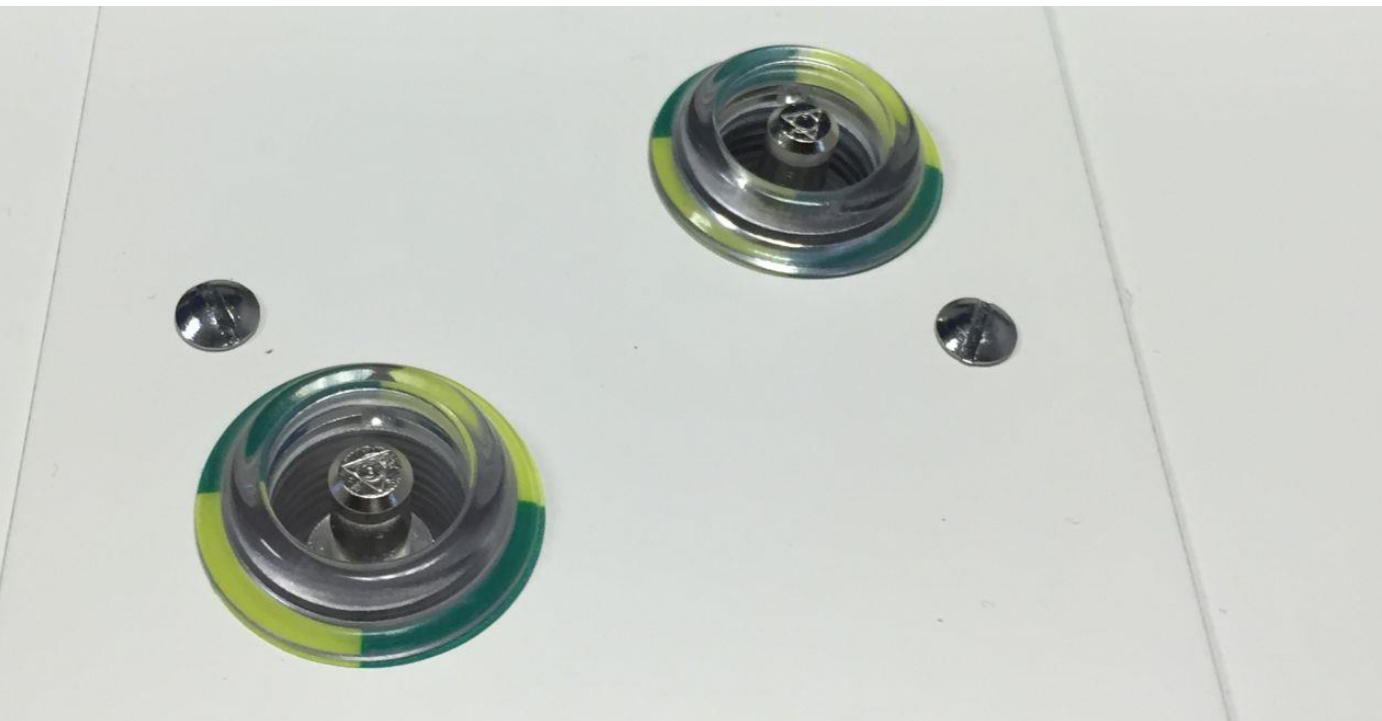
### INDUSTRY NORM FIXING APERTURE

The POAG-PES fits into a universally adopted mounting aperture which facilitates a simple supplier transition within the OEM supply-chain and does not require any re-engineering of existing OEM designs.





MADE IN BRITAIN  
DISTRIBUTED WORLDWIDE



### HIGH-GRADE MATERIALS

The combination of high quality British manufacturing and the use of finest grade materials in each component ensures reliable potential equalisation in medical locations, and supported by the Cableflow reputation as a globally renowned manufacturer of medical workplace components.

### APPLICABLE STANDARDS

**IEC 60601-1:** Medical electrical equipment – General requirements for safety

**ISO 11197:** Medical supply units – essential safety requirements

**IEC 60364-1:** Low-voltage electrical installations – Part 1: Fundamental principles, assessment of general characteristics, definitions.

**IEC 60364-7-710:** Electrical Installations of buildings – requirements for special installations or locations – Medical locations

**BS 7671:** 17<sup>th</sup> Edition Wiring Regulations (Cg3 Section 710 – Medical locations)

**DIN 42801:** Potential equalisation leads – Connecting pins

**DIN 42801-2:** Potential equalisation leads – Connecting sockets

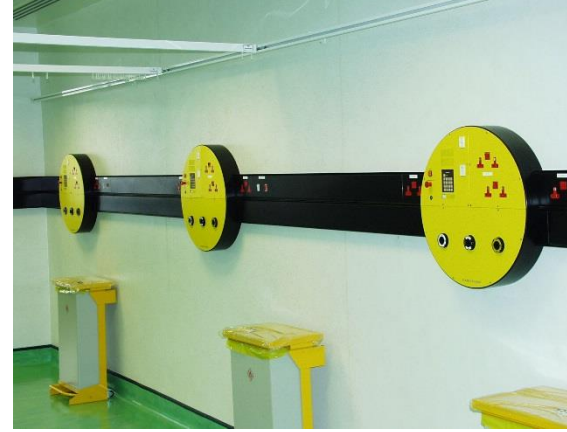
**Ordering Information** - complete assembly part numbers:

Green – POAG-PES-G

Clear – POAG-PES-C

Each assembly is supplied individually bagged complete with label, nuts, washers and shakeproof washers in accordance with DIN 42801 for direct connection into the proprietary mounting point.

*Registered Design & Patents Pending 2014*





**MADE IN BRITAIN**  
DISTRIBUTED WORLDWIDE

**CABL  FLOW™**

Cableflow  
International  
Limited

For full product data sheets go to our website or contact us directly

[www.cableflow.com](http://www.cableflow.com)

Cableflow International Limited  
Windsor House | Abbey Barn Road  
High Wycombe | Buckinghamshire  
HP11 1NN | United Kingdom

(tel) 00 44 (0) 1494 52 88 11  
(fax) 00 44 (0) 1494 52 11 88  
(email) [sales@cableflow.com](mailto:sales@cableflow.com)

Registered in England 2356618

Copyright 2015 v1

