



Product catalogue  
**burmatex**<sup>®</sup>



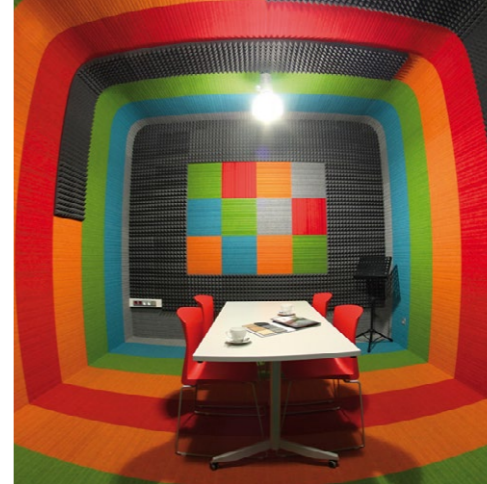
We are passionate about making our flooring products and aim to create truly inspirational environments for people to enjoy



**burmatex**® offers an expansive product range; our traditional fibre bonded sheet and tile ranges include entrance products and ground-breaking structure bonded ranges, which present an expansive colour palette. Our multilevel loop, low level loop, textured loop and cut pile tufted carpet tile ranges, including a specialist entrance barrier product, are inspired by the latest and predicted future design and colour trends.



**burmatex**® is committed to best environmental practice in our manufacturing, from the sourcing of raw materials - including recycled content - minimising and reprocessing waste, use of green electricity and recycled packaging. Because of this, the Building Research Establishment (BRE) has awarded our products the highest BREEAM ratings; mostly A+.



We hope that by reading our catalogue and visiting our website at **[www.burmatex.co.uk](http://www.burmatex.co.uk)**, we will inspire you to work with us to create really unique, captivating floor designs.

**burmatex**® is a leading UK manufacturer of contract carpets and carpet tiles. We are passionate about creating truly inspirational environments, reflected in our products unique nature across both design and manufacture.

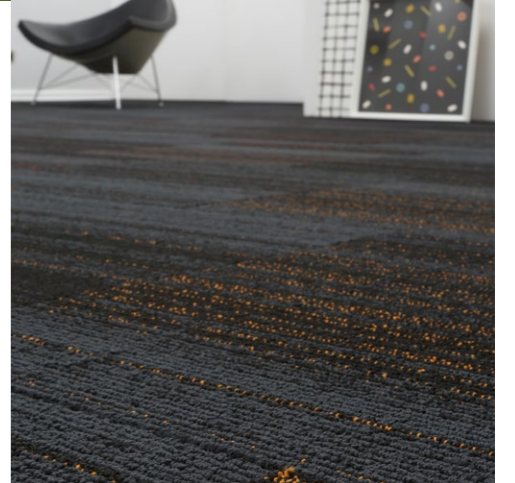
Our products are suitable for use in heavy contract markets and used in a wide variety of private and public sector buildings, including schools, offices, universities and leisure centres.

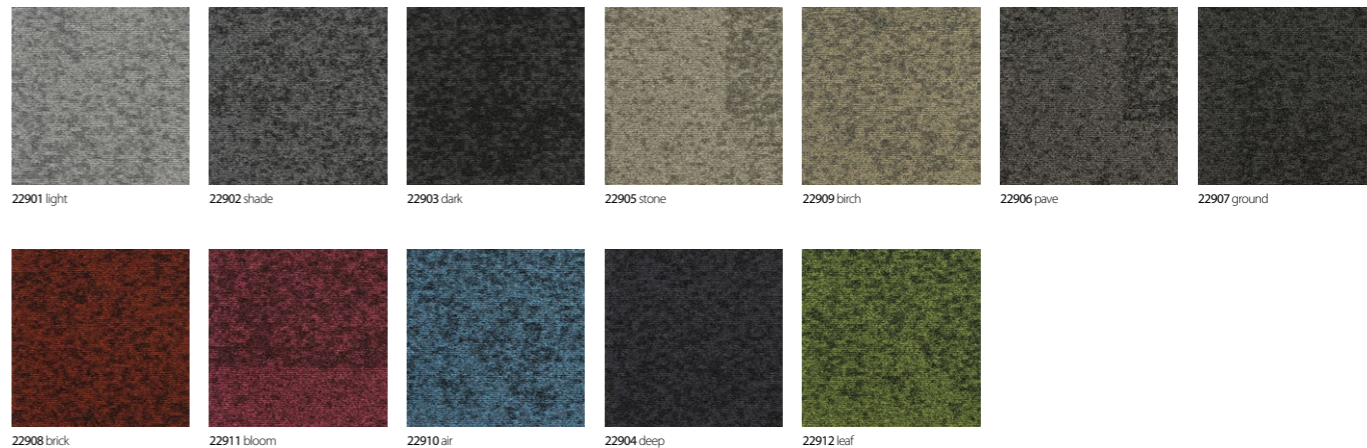


The **burmatex**® design team are a driving force in developing product ranges which reflect colour and design trends as well as creating exclusive, bespoke carpet tiles to meet customers' needs and providing our free planned flooring layout design service.



**burmatex**® is a BS EN ISO 9001:2000 registered company (Cert No.FM1440). All products are tested to BSI/CEN standards in relation to durability, wear, flame retardancy, antistatic properties and colour fastness.





**Specification**

- Product Description:** Multilevel Loop
- Pile Yarn Description:** 100% Solution Dyed Aquafil Econyl® Nylon (Polyamide-PA)
- Tile Dimensions:** 50 cm x 50 cm
- Pile Height:** 5 mm +/-10%
- Total Thickness:** 7.5 mm +/-10%
- Pile Weight:** 910 g/m<sup>2</sup>
- Tufts per m<sup>2</sup>:** 236,220 g/m<sup>2</sup>
- Castor Chair Rating:** BS EN 985 Pass
- Body Voltage Test:** BS ISO 6356:2000 <2kV
- Colour Fastness To Light:** Minimum grade 6
- Flammability:** Euroclass Bfl-s1



# rainfall

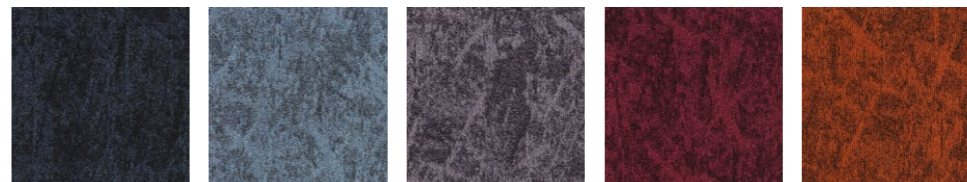
**rainfall's** inspiration was trying to capture those first moments of a summer storm. The first spots of rain punctuate the surface, gathering in intensity until the whole colour is several shades darker.

This multilevel loop product encompasses changes of tone in varying proportions throughout, resulting in an all over effect of subtlety combined with soft angles.

These characteristics ensure that each installation of appears slightly different from the last. An enticing palette of 12 colours provides bright and light options, through to more concentrated and atmospheric tones, suitable for all manner of installations and interiors.



22801 haiku    22802 sesame    22803 sumi    22809 mochi    22805 arashi    22806 yari    22810 matcha



22808 inkpot    22807 fuji    22811 orchid    22812 sakura    22804 lantern

**Specification**

- Product Description:** Multilevel Loop
- Pile Yarn Description:** 100% Solution Dyed Nylon (Polyamide-PA)
- Tile Dimensions:** 50 cm x 50 cm
- Pile Height:** 5 mm +/-10%
- Total Thickness:** 7.5 mm +/-10%
- Pile Weight:** 795 g/m<sup>2</sup>
- Tufts per m<sup>2</sup>:** 226,771 g/m<sup>2</sup>
- Castor Chair Rating:** BS EN 985 Pass
- Body Voltage Test:** BS ISO 6356:2000 <2kV
- Colour Fastness To Light:** Minimum grade 6
- Flammability:** Euroclass Bfl-s1



# osaka

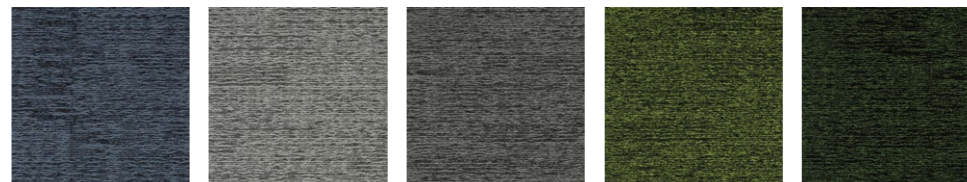
inspired by clashes in Japanese culture; new and old, warm and cool, urban and natural - **osaka** is a collection of contrasts that work seamlessly together.

The design's pattern (originally from a map of Osaka) can be interpreted in a multitude of ways; geometric and inspired by the traditional practise of origami, or organic and reminiscent of a bamboo forest floor.

The abstract nature of the design, teamed with a diverse colour palette, allows it to be both soft and strong, expertly working with any modern interior space.



22201 ice      22202 ridge      22203 point      22204 north      22205 moose      22206 anchor      22207 creek



22208 lake      22209 husky      22210 wolf      22211 spruce      22212 valley

**Specification**

- Product Description:** Multilevel Loop
- Pile Yarn Description:** 100% Solution Dyed Aquafil Econyl® Nylon (Polyamide-PA)
- Tile Dimensions:** 50 cm x 50 cm
- Pile Height:** 5 mm +/-10%
- Total Thickness:** 7.5 mm +/-10%
- Pile Weight:** 800 g/m<sup>2</sup>
- Tufts per m<sup>2</sup>:** 226,771 g/m<sup>2</sup>
- Castor Chair Rating:** BS EN 985 Pass
- Body Voltage Test:** BS ISO 6356:2000 <2kV
- Colour Fastness To Light:** Minimum grade 6
- Flammability:** Euroclass Bfl-s1



# alaska

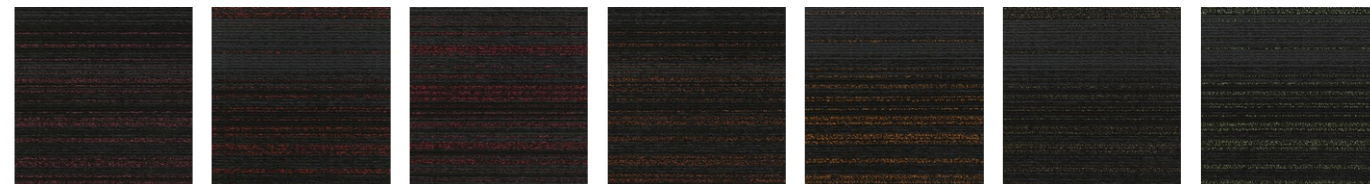
**alaska** is our first multilevel loop product and its name was also our inspiration.

A concise palette of twelve colours in this 800g product, combined with the tactile and textural finish, all relate to the invigorating outdoors of this beautiful state. This enables the creation of nature-inspired flooring schemes, while not excluding the possibility of a more classic effect.

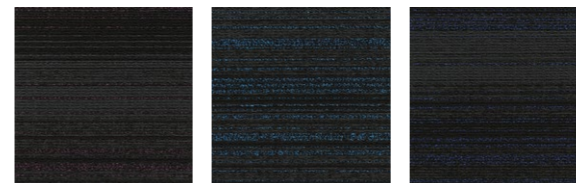
Used alone, or in combination with other burmatex ranges such as **grade, axis** and **hadron, alaska** brings an additional layer of flexibility and creativity to our constantly evolving product portfolio.



21601 titanium    21615 ash    21603 sparkler    21616 arctic    21610 clay    21604 firefly    21608 moss



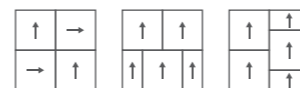
21607 flamingo    21605 crimson    21612 raspberry    21613 rust    21606 papaya    21611 starling    21609 mint



21614 violet    21602 cerulean    21617 electric

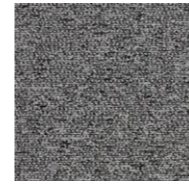
**Specification**

- Product Description:** Textured Loop Pile
- Pile Yarn Description:** 100% Solution Dyed Nylon 6.6 (Polyamide-PA)
- Tile Dimensions:** 50 cm x 50 cm
- Pile Height:** 3.5 mm +/-10%
- Total Thickness:** 6.5 mm +/-10%
- Pile Weight:** 800 g/m<sup>2</sup>
- Tufts per m<sup>2</sup>:** 177,165 g/m<sup>2</sup>
- Castor Chair Rating:** BS EN 985 Pass
- Body Voltage Test:** BS ISO 6356:2000 <2kV
- Colour Fastness To Light:** Minimum grade 6
- Flammability:** Euroclass Bfl-s1



# hadron

**hadron** is highly inspired by striking imagery of the hadron collider. Hyper-real bright bursts of colour, surround by dark space. Each colour-way from the collection has the same neutral, dark grey base, making it easy to delineate areas without harsh lines and creating seamless transitions across a floor. A variety of highlight colours are used, from intense pops of colour to mid tones, neutrals and semi-darks. The inclusion of texture on this carpet tile, in a subtle weft style pattern, enhances the dispersed nature of the colours.



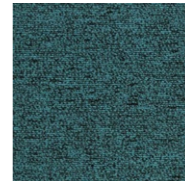
22101 frost



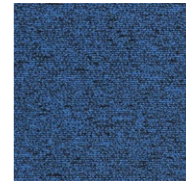
22103 wren



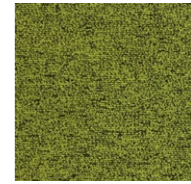
22104 mist



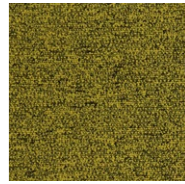
22102 sky



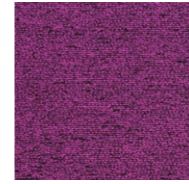
22105 blueprint



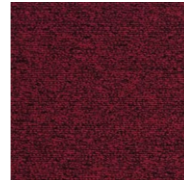
22106 fern



22109 orb



22108 jelly



22107 fuschia



22111 robin



22110 amber

#### Specification

**Product Description:** Textured Loop Pile

**Pile Yarn Description:** 100% Solution Dyed Aquafil Econyl Nylon (Polyamide-PA)

**Tile Dimensions:** 50 cm x 50 cm

**Pile Height:** 3.5 mm +/-10%

**Total Thickness:** 6.0 mm +/-10%

**Pile Weight:** 550 g/m<sup>2</sup>

**Tufts per m<sup>2</sup>:** 177,165 g/m<sup>2</sup>

**Castor Chair Rating:** BS EN 985 Pass

**Body Voltage Test:** BS ISO 6356:2000 <2kV

**Colour Fastness To Light:** Minimum grade 6

**Flammability:** Euroclass Bfl-s1

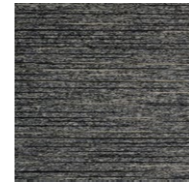


## axis

**axis** is inspired by our surroundings; nature, art, food, and culture. Strong and bold, or rich and calm, the palette of eleven colours provides the axis for many different flooring schemes. Create a vibrant punch of colour, a calm oasis, or use in combination with other burmatex ranges such as **hadron**, **grade** or **strands**.

The relationship with **strands** is unique, in that all the colours in the strands palette now have a corresponding axis colour.

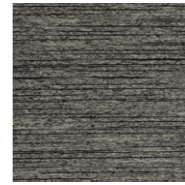
Each of the colours has been designed to be installed single direction – no need to quarter turn – with an inherent dark fleck to provide extra appearance retention without compromising the impact of the product.



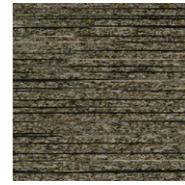
19802 blue tin



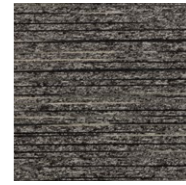
19805 burnished copper



19801 galvanised steel



19806 green nickel



19804 permanganate



19803 warmed lead

#### Specification

**Product Description:** Textured Loop Pile

**Pile Yarn Description:** 100% Solution Dyed & Space Dyed Nylon (Polyamide-PA)

**Tile Dimensions:** 50 cm x 50 cm

**Total Thickness:** 5 mm +/-10%

**Pile Weight:** 620 g/m<sup>2</sup>

**Tufts per m<sup>2</sup>:** 235.800 g/m<sup>2</sup>

**Castor Chair Rating:** BS EN 985 Pass

**Body Voltage Test:** BS ISO 6356:2000 <2kV

**Colour Fastness To Light:** Minimum grade 6

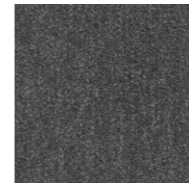
**Flammability:** Euroclass Bfl-s1



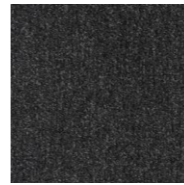
## tandem

**m** is a high performance tile class 33, central to the design collection; this simply styled tile presents six colours from a natural palette which can be laid both monolithically and quarter turn suiting small and large spaces.

**tandem** works individually and alongside other ranges to complement and enhance a design colour; with a textured effect and enduring finish this gentle design effortlessly complements various finishes and furnishings.



21803 medium grey



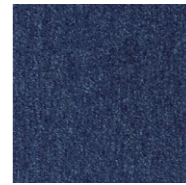
21802 coal grey



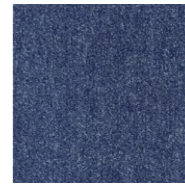
21804 beige



21808 berry red



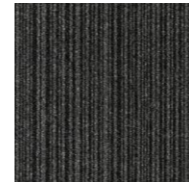
21806 sea blue



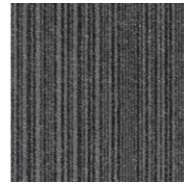
21807 denim blue



21805 apple green



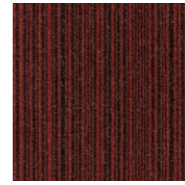
21903 medium grey stripe



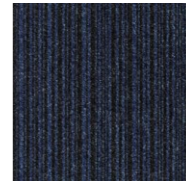
21902 coal grey stripe



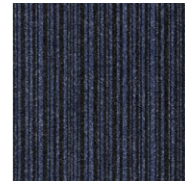
1904 beige stripe



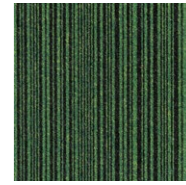
21908 berry red stripe



21906 sea blue stripe



21907 denim blue stripe



21905 apple green stripe



21801 jet black

#### Specification

**Product Description:** Low Level Loop

**Pile Yarn Description:** 100% Solution Dyed Nylon (Polyamide-PA)

**Tile Dimensions:** 50 cm x 50 cm

**Pile Height:** 3.0 mm +/-10%

**Total Thickness:** 5.5 mm +/-10%

**Pile Weight:** 470 g/m<sup>2</sup> +/-10%

**Tufts per m<sup>2</sup>:** 196,850 g/m<sup>2</sup> +/-10%

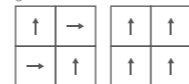
**Castor Chair Rating:** BS EN 985 Pass

**Body Voltage Test:** BS ISO 63562:2000 <2kV

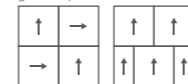
**Colour Fastness To Light:** Minimum grade 6

**Flammability:** Euroclass Bfl-s1

go to



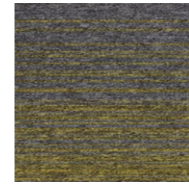
go to stripe



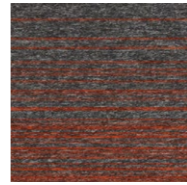
## go to

**go to** offers two designs – plain and stripe in a popular colour palette of fifteen. Brighter and darker greys and blues are supported with red and green brights within the collection. Each colour except jet black has its own counterpart in the stripe design. You can mix and match the plain and stripe options to create more interesting floor layouts or define zones.

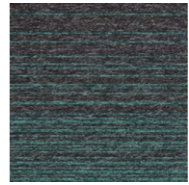
The range maintains the level of high performance and resilience that **burmatex**® carpet tiles are known for. **go to** is the perfect choice for users that are looking for a quick and easy carpet installation option.



32701 south beach



32702 palm springs



32703 ocean drive



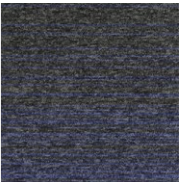
32705 turtle bay



32704 havana town



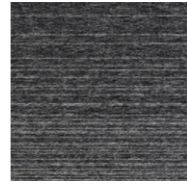
32710 icelandic isle



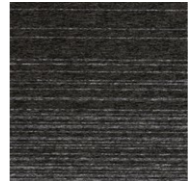
32711 nordic fjord



32708 bergen city



32712 polar drift



32707 baffin island



32713 galapagos bay



32706 bora bora

#### Specification

**Product Description:** Low Level Loop

**Pile Yarn Description:** 100% Solution Dyed Nylon (Polyamide-PA)

**Tile Dimensions:** 50 cm x 50 cm, 25 cm x 100 cm

**Pile Height:** 4 mm +/-10%

**Total Thickness:** 6.5 mm +/-10%

**Pile Weight:** 600 g/m<sup>2</sup>

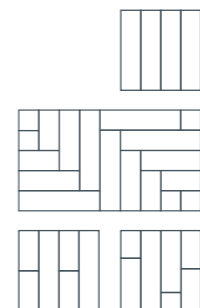
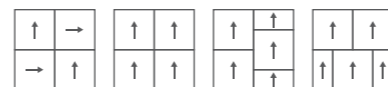
**Tufts per m<sup>2</sup>:** 196500 g/m<sup>2</sup>

**Castor Chair Rating:** BS EN 985 Pass

**Body Voltage Test:** BS ISO 6356:2000 <2kV

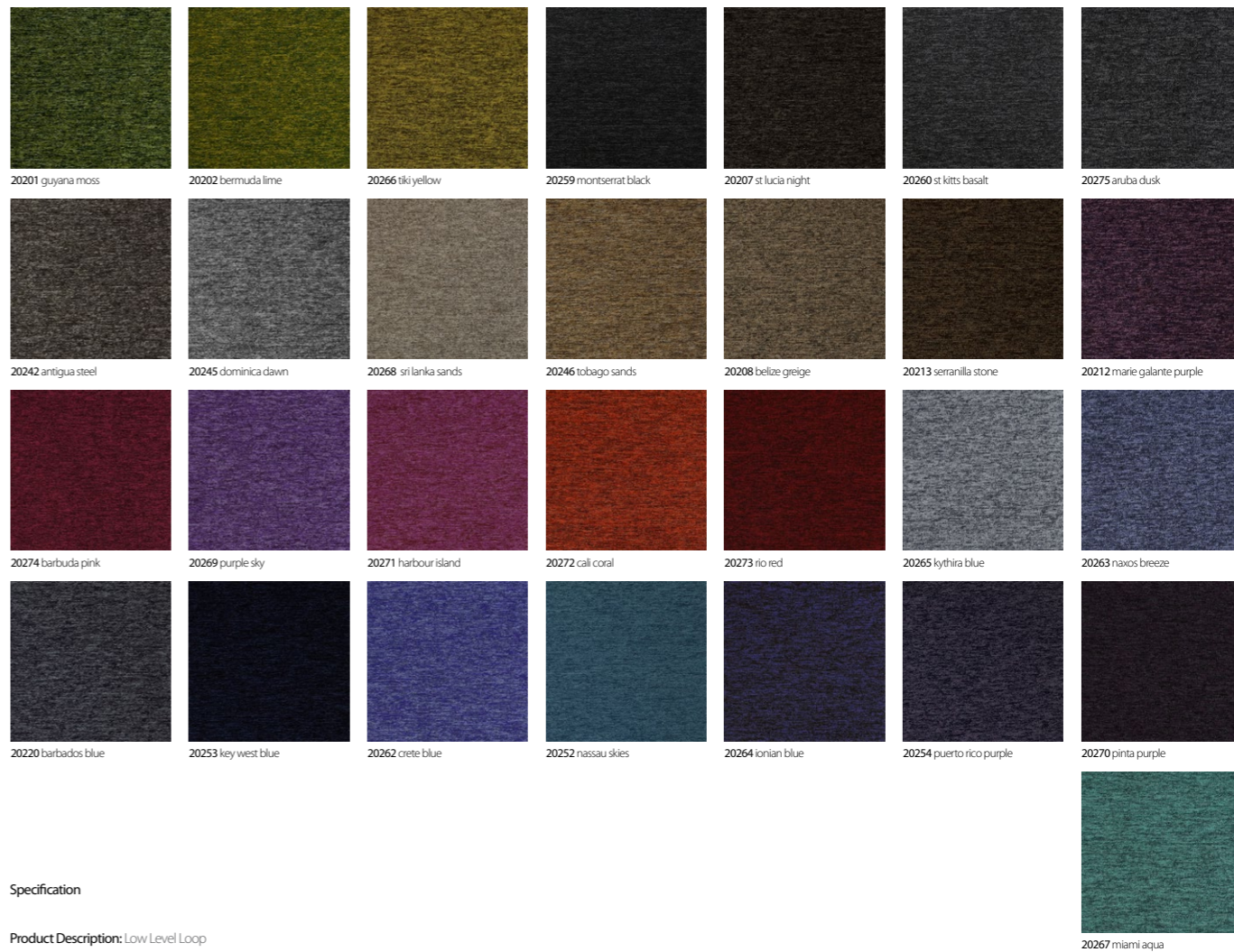
**Colour Fastness To Light:** Minimum grade 6

**Flammability:** Euroclass Bfl-s1



## tivoli mist tile/plank

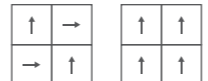
**tivoli mist** offers a flexible range of commercial carpet tiles, designed to provide creativity, colour and individuality. With colour pairings that blend seamlessly together, **tivoli mist** affords the possibility of transitioning from one zoned area to another without the use of hard lines.



loop pile

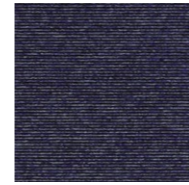
**Specification**

- Product Description:** Low Level Loop
- Pile Yarn Description:** 100% Solution Dyed Nylon (Polyamide-PA)
- Tile Dimensions:** 50 cm x 50 cm
- Pile Height:** 4 mm +/-10%
- Total Thickness:** 6.5 mm +/-10%
- Pile Weight:** 600 g/m<sup>2</sup>
- Tufts per m<sup>2</sup>:** 196.500 g/m<sup>2</sup>
- Castor Chair Rating:** BS EN 985 Pass
- Body Voltage Test:** BS ISO 6356:2000 <2kV
- Colour Fastness To Light:** Minimum grade 6
- Flammability:** Euroclass Bfl-s1



# tivoli tile (2019)

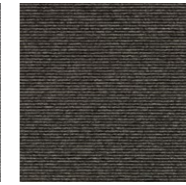
tivoli presents a high performance loop pile (class 33) product offering, made with 100% solution dyed nylon and including **tivoli**, **tivoli online** and **tivoli multiline**.



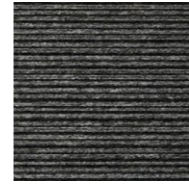
online  
20607 aegean sea



online  
20608 haiti haze



online  
20609 perissa sand



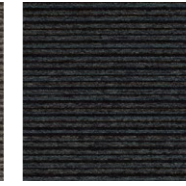
multiline  
20703 melanesia grey



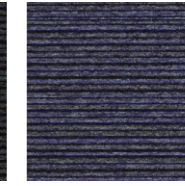
multiline  
20707 tenerife black



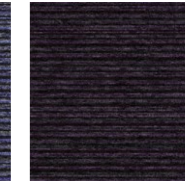
multiline  
20711 seychelles beige



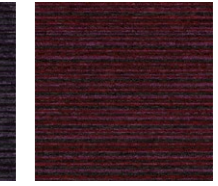
multiline  
20709 mediterranean topaz



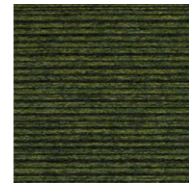
multiline  
20708 santorini blue



multiline  
20712 cayman purple



multiline  
20713 takutea red



multiline  
20710 everglade green

#### Specification

**Product Description:** Low Level Loop

**Pile Yarn Description:** 100% Solution Dyed Nylon (Polyamide-PA)

**Tile Dimensions:** 50 cm x 50 cm

**Pile Height:** 4 mm +/-10%

**Total Thickness:** 6.5 mm +/-10%

**Pile Weight:** 600 g/m<sup>2</sup>

**Tufts per m<sup>2</sup>:** 196,500 g/m<sup>2</sup>

**Castor Chair Rating:** BS EN 985 Pass

**Body Voltage Test:** BS ISO 6356:2000 <2kV

**Colour Fastness To Light:** Minimum grade 6

**Flammability:** Euroclass Bfl-s1



## tivoli tile 2019 (cont.)

Varied plain, **tivoli**, classic pinstripe, **tivoli online** and contemporary striped, **tivoli multiline**, designs can be used individually or in a bespoke arrangement, with the expansive, modern colour palette enabling classic, neutral schemes or innovative, creative layouts.



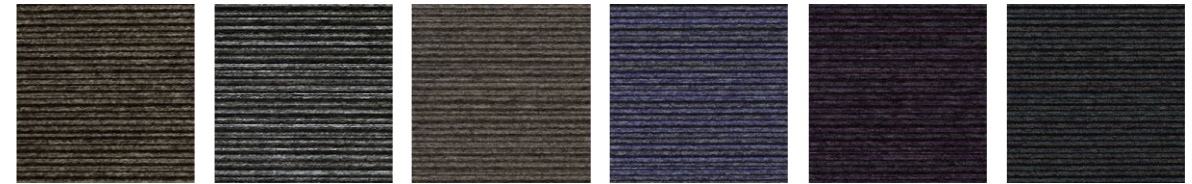
21101 guayana moss    21102 bermuda lime    21166 tiki yellow    21159 montserrat black    21160 st kitts basalt    21107 st lucia night    21175 aruba dusk



21142 antigua steel    21145 dominica dawn    21168 sri lanka sands    21108 belize greige    21165 lythira blue    21163 navos breeze    21120 barbados blue



21164 ionian blue    21152 nassau skies    21153 key west blue    21169 purple sky    21172 cali coral    21167 miami aqua



multiline 20703 melanesia grey    multiline 20707 tenerife black    multiline 21211 seychelles beige    multiline 21208 santorini blue    multiline 21212 cayman purple    multiline 21209 mediterranean topaz

**Specification**

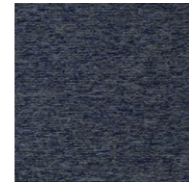
- Product Description:** Low Level Loop
- Pile Yarn Description:** 100% Solution Dyed Nylon (Polyamide-PA)
- Tile Dimensions:** 25 cm x 100 cm
- Pile Height:** 4 mm +/-10%
- Total Thickness:** 6.5 mm +/-10%
- Pile Weight:** 600 g/m<sup>2</sup>
- Tufts per m<sup>2</sup>:** 196500 g/m<sup>2</sup>
- Castor Chair Rating:** BS EN 985 Pass
- Body Voltage Test:** BS ISO 6356:2000 <2kV
- Colour Fastness To Light:** Minimum grade 6
- Flammability:** Euroclass Bfl-s1



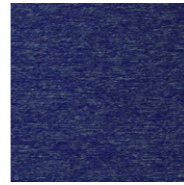
# tivoli plank 2019

tivoli carpet planks offer two loop pile designs – a solid colour **tivoli** and a stripe **tivoli multiline**. The colour selection creates a broad palette with complementary colours across the two designs developing creative installation options.

tivoli carpet planks are made with 100% solution dyed nylon and are suitable for heavy commercial use (class 33).



20223 nevis blue



20203 caicos azure



20211 barthelemy green



20204 tortola gold



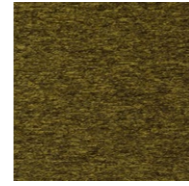
20205 bahamas- orange



20210 bellamy red



20249 martinique-maroon



20206 green turtle



20230 grenada grey



20225 saona sage



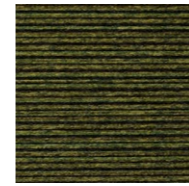
20209 trinidad sea



20214 st martin sands



20258 panama brown



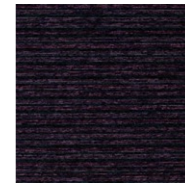
multiline  
20702 pacific green



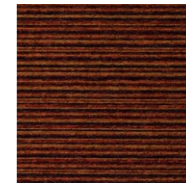
multiline  
20704 polynesia beige



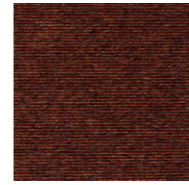
multiline  
20701 ibiza blue



multiline  
20705 mauritius mauve



multiline  
20706 nion terracotta



online  
20604 sardinian coral



online  
20602 cyclades jade



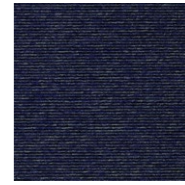
online  
20603 tahitian pearl



online  
20606 baltic amber



online  
20605 pamarzi earth



online  
20601 atlantic cobalt

#### Specification

**Product Description:** Low Level Loop

**Pile Yarn Description:** 100% Solution Dyed Nylon (Polyamide-PA)

**Tile Dimensions:** 50 cm x 50 cm

**Pile Height:** 4 mm +/-10%

**Total Thickness:** 6.5 mm +/-10%

**Pile Weight:** 600 g/m<sup>2</sup>

**Tufts per m<sup>2</sup>:** 196500 g/m<sup>2</sup>

**Castor Chair Rating:** BS EN 985 Pass

**Body Voltage Test:** BS ISO 6356:2000 <2kV

**Colour Fastness To Light:** Minimum grade 6

**Flammability:** Euroclass Bfl-s1

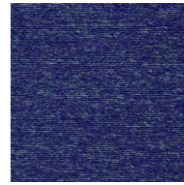


## tivoli tile

Varied plain, **tivoli**, classic pinstripe, **tivoli online** and contemporary striped, **tivoli multiline**, designs can be used individually or in a bespoke arrangement, with the expansive, modern colour palette enabling classic, neutral schemes or innovative, creative layouts.



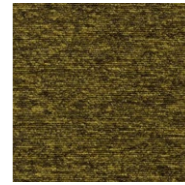
21114 st martin sands



21103 caicos azure



21111 barthelemy green



21106 green turtle



21104 tortola gold



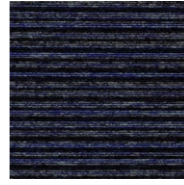
21105 bahamas orange



21110 bellamy red



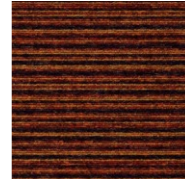
21149 martinique maroon



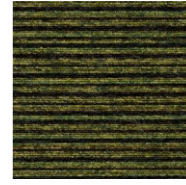
multiline  
21201 ibiza blue



multiline  
21205 mauritius mauve



multiline  
21206 reunion terracotta



multiline  
21202 pacific green



multiline  
21204 polynesia beige

#### Specification

**Product Description:** Low Level Loop

**Pile Yarn Description:** 100% Solution Dyed Nylon (Polyamide-PA)

**Tile Dimensions:** 25 cm x 100 cm

**Pile Height:** 4 mm +/-10%

**Total Thickness:** 6.5 mm +/-10%

**Pile Weight:** 600 g/m<sup>2</sup>

**Tufts per m<sup>2</sup>:** 196500 g/m<sup>2</sup>

**Castor Chair Rating:** BS EN 985 Pass

**Body Voltage Test:** BS ISO 6356:2000 <2kV

**Colour Fastness To Light:** Minimum grade 6

**Flammability:** Euroclass Bfl-s1



## tivoli plank

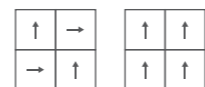
**tivoli** carpet planks offer two loop pile designs – a solid colour **tivoli** and a stripe **tivoli multiline**. The colour selection creates a broad palette with complementary colours across the two designs developing creative installation options.

**tivoli** carpet planks are made with 100% solution dyed nylon and are suitable for heavy commercial use (class 33).



**Specification**

**Product Description:** Low Level Loop  
**Pile Yarn Description:** 100% Nylon (Polyamide PA) Space Dyed & Recycled Solution Dyed  
**Tile Dimensions:** 50 cm x 50 cm  
**Pile Height:** 4.8 mm +/-10%  
**Total Thickness:** 7.3 mm +/-10%  
**Pile Weight:** 550 g/m<sup>2</sup>  
**Tufts per m<sup>2</sup>:** 196,500 g/m<sup>2</sup>  
**Castor Chair Rating:** BS EN 985 Pass  
**Body Voltage Test:** BS ISO 6356:2000 <2kV  
**Colour Fastness To Light:** Minimum grade 6  
**Flammability:** Euroclass Bfl-s1



# infinity

**infinity** offers 2 designs – **infinity** and **infinity stitch** in a large well balanced palette of 30 colours.

Both the classic flecked design of **infinity** and the unique directional organic pattern of **infinity stitch** are ideal for various type of interiors like large open-plan office spaces, smaller individual offices, corridors, reception areas or public buildings.



denim  
■ 21502 ■ 22502



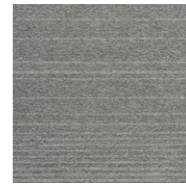
indigo  
■ 21503 ■ 22503



purple  
■ 21506 ■ 22506



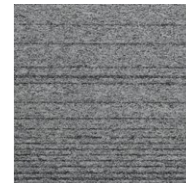
ruby  
■ 21504 ■ 22504



silver  
■ 21501 ■ 22501



zinc  
■ 21508 ■ 22508



smoke  
■ 21509 ■ 22509



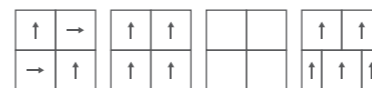
crater  
■ 21505 ■ 22505



abyss  
■ 21507 ■ 22507

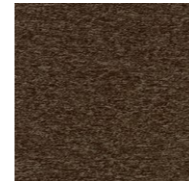
#### Specification

- Product Description:** Low Level Loop
- Pile Yarn Description:** 100% Solution Dyed Nylon (Polyamide-PA)
- Tile Dimensions:** 50 cm x 50 cm, 25 cm x 100 cm
- Pile Height:** 3.5 mm +/-10%
- Total Thickness:** 6.0 mm +/-10%
- Pile Weight:** 620 g/m<sup>2</sup> +/-10%
- Tufts per m<sup>2</sup>:** 235,800 g/m<sup>2</sup> +/-10%
- Castor Chair Rating:** BS EN 985 Pass
- Body Voltage Test:** BS ISO 63562:2000 <2kV
- Colour Fastness To Light:** Minimum grade 6
- Flammability:** Euroclass Bfl-s1



## grade tile & plank

The name **grade** links to the graduation between lighter tones and darker ones within each colour option. A researched and considered palette of nine colours gives great flexibility and longevity, whether using a single selection or creating your own combinations. Colours can subtly diffuse from one to another, or create drama by using blocks of contrasted areas



51435 fudge



51436 timber



51405 honey



51410 charcoal



51401 slate



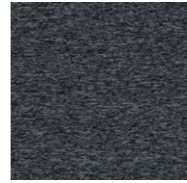
51402 flint



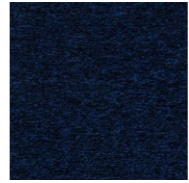
51433 moonlight



51412 deep sea



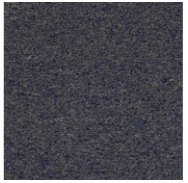
51434 dumulus



51403 midnight



51432 atmosphere



51413 crystal



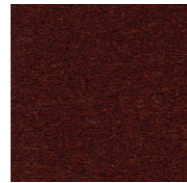
51418 delft



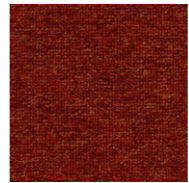
51411 ocean



51407 everglade



51406 spice



51437 poppy



51438 sandstone

#### Specification

**Product Description:** Low Level Loop

**Pile Yarn Description:** 100% Solution Dyed Nylon

**Tile Dimensions:** 50 cm x 50 cm

**Pile Height:** 4.5 mm +/-10%

**Total Thickness:** 7.0 mm +/-10%

**Pile Weight:** 550 g/m<sup>2</sup>

**Tufts per m<sup>2</sup>:** 176,850 g/m<sup>2</sup>

**Castor Chair Rating:** BS EN 985 Pass

**Body Voltage Test:** BS ISO 6356:2000 <2kV

**Colour Fastness To Light:** Minimum grade 6

**Flammability:** Euroclass Bfl-s1



## balance

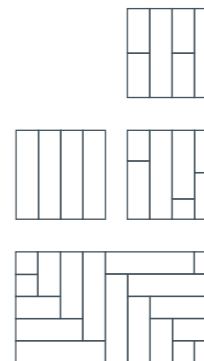
**balance** is a 100% solution dyed nylon level loop pile carpet tile, ideal for commercial, education and public sector projects. **balance's** 18 colourways have been inspired by an eclectic global palette which work equally well when used subtly or boldly over large areas or as accents to define smaller floor spaces.



black  
■21001 ■22001

#### Specification

**Product Description:** Low Level Loop  
**Pile Yarn Description:** 100% Solution Dyed Nylon (Polyamide-PA)  
**Tile Dimensions:** 50 cm x 50 cm, 25 cm x 100 cm  
**Pile Height:** 4.5 mm +/-10%  
**Total Thickness:** 7.0 mm +/-10%  
**Pile Weight:** 550 g/m<sup>2</sup>  
**Tufts per m<sup>2</sup>:** 176,850 g/m<sup>2</sup>  
**Castor Chair Rating:** BS EN 985 Pass  
**Body Voltage Test:** BS ISO 63562000 <2kV  
**Colour Fastness To Light:** Minimum grade 6  
**Flammability:** Euroclass Bfl-s1



## balance echo tile & plank

**balance echo** black is a dark, low level loop, carpet tile and plank design in 100% solution dyed nylon. With a combination of stripes and blocks this heavy contract (class 33), flexible design works in a mixture of installation styles. Able to be combined with both bright and neutral inserts, this multi-tile/multi-plank design enables the simple creation of an impressive installation.



19701 dark sepiá



19702 space dust



19703 pencil lead



19704 classic grey



19705 grey slate



19706 blackboard

#### Specification

**Product Description:** Low Level Loop

**Pile Yarn Description:** 100% Solution Dyed Nylon (Polyamide-PA)

**Tile Dimensions:** 50 cm x 50 cm

**Pile Height:** 4.5 mm +/-10%

**Total Thickness:** 7.0 mm +/-10%

**Pile Weight:** 550 g/m<sup>2</sup>

**Tufts per m<sup>2</sup>:** 176.850 g/m<sup>2</sup>

**Castor Chair Rating:** BS EN 985 Pass

**Body Voltage Test:** BS ISO 63562:2000 <2kV

**Colour Fastness To Light:** Minimum grade 6

**Flammability:** Euroclass Bfl-s1



## balance stripe

**balance stripe** is a loop pile range in the Burmatex portfolio. Its timeless appearance combined with a classic and contemporary colour palette is perfect for offices, corporate buildings or commercial spaces. This BREEAM A+ rated collection can be easily combined with other Burmatex products from tufted, structured bonded and fibre bonded collections to create a unique scheme.



18501 grey

#### Specification

- Product Description:** Low Level Loop
- Pile Yarn Description:** 100% Solution Dyed Nylon (Polyamide-PA)
- Tile Dimensions:** 50 cm x 50 cm
- Pile Height:** 4.5 mm +/-10%
- Total Thickness:** 7.0 mm +/-10%
- Pile Weight:** 550 g/m<sup>2</sup>
- Tufts per m<sup>2</sup>:** 176,850 g/m<sup>2</sup>
- Castor Chair Rating:** BS EN 985 Pass
- Body Voltage Test:** BS ISO 6356:2000 <2kV
- Colour Fastness To Light:** Minimum grade 6
- Flammability:** Euroclass Bfl-s1



## balance greyscale

**balance greyscale** is a new dark grey 'field' tile which co-ordinates beautifully with most products from burmatex, including the 8 vibrant colourways from Strands and the new stylish Balance Atomic range. This BREEAM A+ rated loop pile tile provides a subtle, plain contrast against striped or textured areas, for meeting or breakout areas in offices or other corporate buildings.



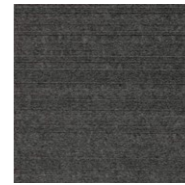
1834 soap stone



1891 pewter cloud



1805 diamond dust



1803 concrete jungle



1802 zinc asphalt



1801 carbon steel



1809 ink stone



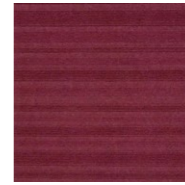
1814 blue monday



1813 lavender oil



1890 purple emperor



1886 pink diamond



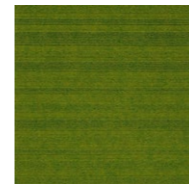
1812 indigo snake



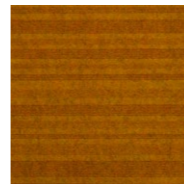
1882 turquoise mountain



1883 emerald coast



1830 lime street



1887 gold quest



1839 mandarin duck



1845 scarlet runner

#### Specification

**Product Description:** Structure Bonded®

**Pile Yarn Description:** 85% Polypropylene 15% Nylon

**Tile Dimensions:** 50 cm x 50 cm

**Total Thickness:** 7.8 mm +/-10%

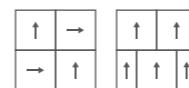
**Pile Weight:** 950 g/m²

**Castor Chair Rating:** BS EN 985 Pass

**Body Voltage Test:** BS ISO 6356:2000 <2kV

**Colour Fastness To Light:** Minimum grade 6

**Flammability:** Euroclass Bfl-s1



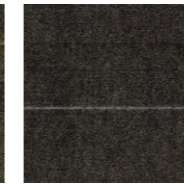
structure bonded®

## lateral®

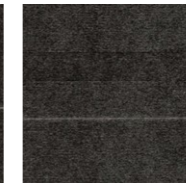
**lateral®** is the definitive product offering for all commercial interiors, schools, public buildings, residential schemes and design and build projects. **lateral's** 'ground-breaking' design stems from our innovative, structure bonded manufacturing technology using an unusual mix of textures from cut through to loop pile. It is available in a range of 18 colours.



12812 quartz layer



12826 pewter cast



12830 diamond bolt



12806 steel cable



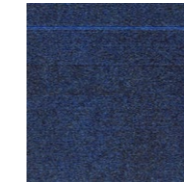
12828 suede ribbon



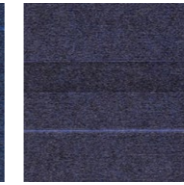
12829 black tar



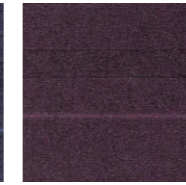
12823 ink bar



12827 blue bay



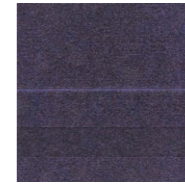
12824 lavender star



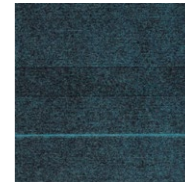
12820 purple patch



12816 pink gin



12831 indigo run



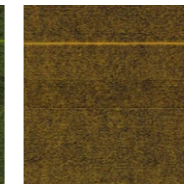
12822 turquoise gem



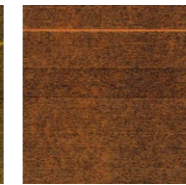
12825 emerald green



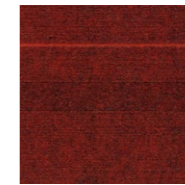
12802 lime light



12818 gold finger



12801 sunset strip



12804 scarlet ribbon

#### Specification

**Product Description:** Structure Bonded®

**Pile Yarn Description:** 85% Polypropylene 15% Nylon

**Tile Dimensions:** 50 cm x 50 cm

**Total Thickness:** 8.0 mm +/-10%

**Pile Weight:** 1000 g/m²

**Castor Chair Rating:** BS EN 985 Pass

**Body Voltage Test:** BS ISO 6356:2000 <2kV

**Colour Fastness To Light:** Minimum grade 6

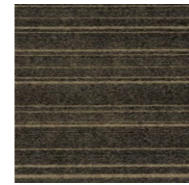
**Flammability:** Euroclass Bfl-s1



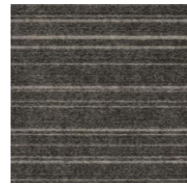
# zip

**zip** is the next generation in structure-bonded® design, evolving from the technology that created lateral®.

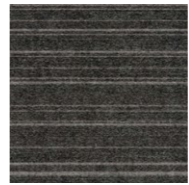
**zip** uses subtle texture and contrasting colour for a striking effect. Combine **zip** with code and lateral® to produce a unique floor design.



12912 cool stone



12926 pewter track



12930 diamond coal



12906 metal shock



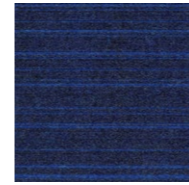
12928 night suede



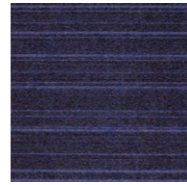
12929 pitch black



12923 ink film



12927 blue reef



12924 lavender seed



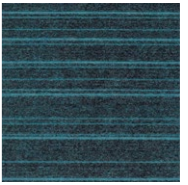
12920 deep purple



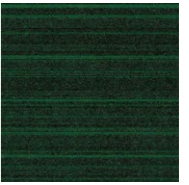
12916 pink panther



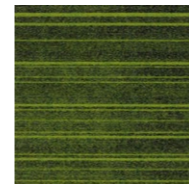
12931 indigo stack



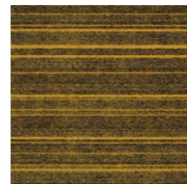
12922 turquoise opal



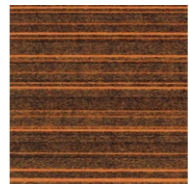
12925 emerald city



12902 lime zest



12918 rolled gold



12901 sun burst



12904 scarlet fever

#### Specification

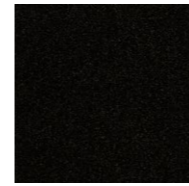
**Product Description:** Structure Bonded®  
**Pile Yarn Description:** 85% Polypropylene 15% Nylon  
**Tile Dimensions:** 50 cm x 50 cm  
**Total Thickness:** 8.0 mm +/-10%  
**Pile Weight:** 1000 g/m²  
**Castor Chair Rating:** BS EN 985 Pass  
**Body Voltage Test:** BS ISO 6356:2000 <2kV  
**Colour Fastness To Light:** Minimum grade 6  
**Flammability:** Euroclass Bfl-s1



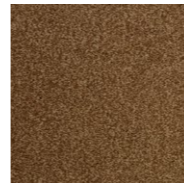
# code

**code** is the next generation in structure-bonded® design, evolving from the technology that created lateral®.

**code** uses subtle contrasting stripes of colour and texture for a stylish defined look. Combine **code** with zip and lateral® to produce a unique floor design.



52026 shadow



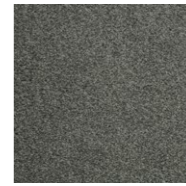
52039 mocha



52040 taupe



52011 onyx



52009 pyrite



52025 galena



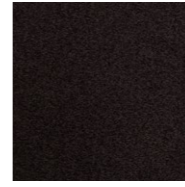
52028 night sky



52018 tanzanite



52001 blue john



52020 black opal



52014 flash fire



52016 turquoise



52008 tourmaline

#### Specification

**Product Description:** Cut Pile

**Pile Yarn Description:** 100% Solution Dyed Nylon

**Tile Dimensions:** 50 cm x 50 cm

**Total Thickness:** 8.0 mm +/-10%

**Pile Weight:** 850 g/m<sup>2</sup>

**Tufts per m<sup>2</sup>:** 157,480 g/m<sup>2</sup>

**Castor Chair Rating:** BS EN 985 Pass

**Body Voltage Test:** BS ISO 6356:2000 <2kV

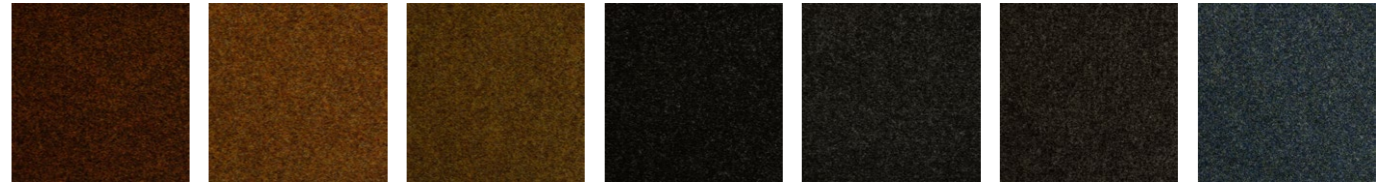
**Colour Fastness To Light:** Minimum grade 6

**Flammability:** Euroclass Bfl-s1

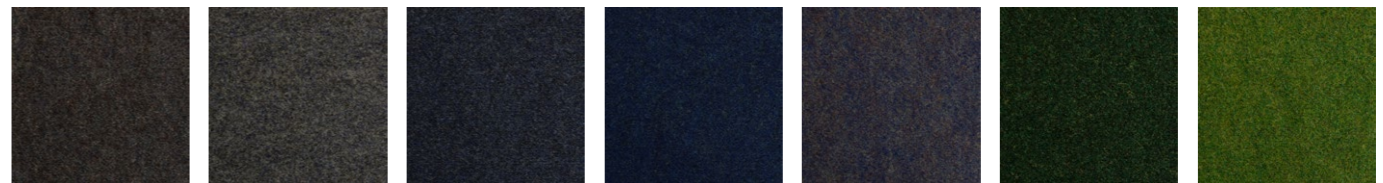


## origin

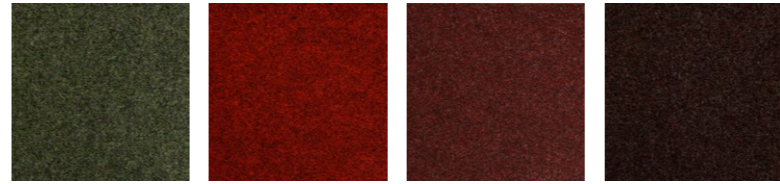
**origin** is a luxurious, contemporary cut pile carpet tile, comprising 13 shades which create a wonderful broadloom appearance when used in large scale or smaller breakout areas. Made from 100% Premium Branded Solution Dyed Nylon, it is suitable for boardrooms, reception areas and most commercial spaces.



2126 gramplan gold    2128 angus tan    2129 falkirk fawn    2110 berkshire black    2109 glamorgan grey    2111 wiltshire charcoal    2102 Devon Blue



2104 hampshire slate    2107 surrey blue    2101 cornwall blue    2105 sussex sea    2106 kent mauve    2119 lancashire green    2118 Yorkshire Fern



2117 cheshire jade    2115 norfolk sun    2114 shropshire maroon    2112 suffolk heather

**Specification**

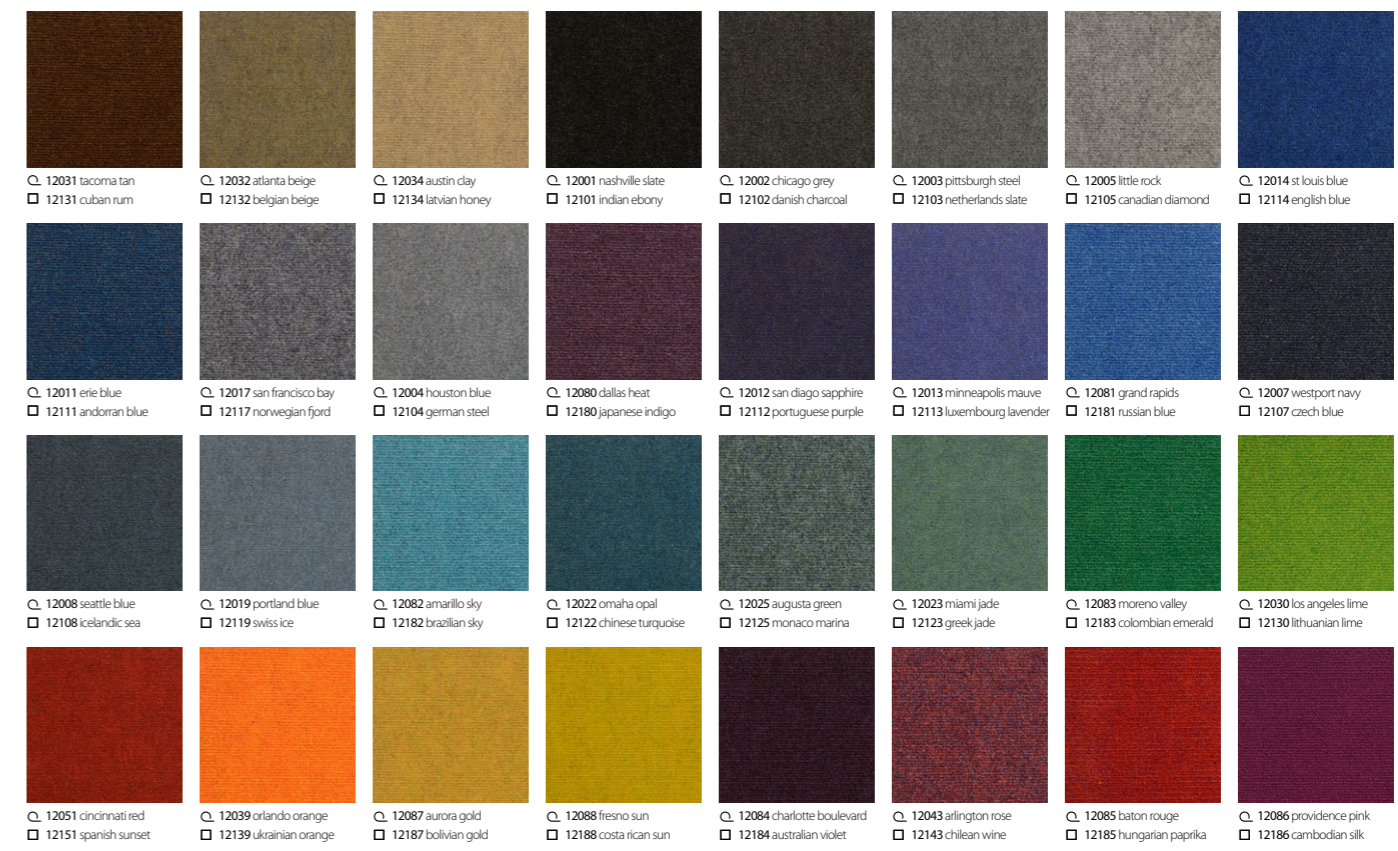
- Product Description:** Fibre Bonded
- Pile Yarn Description:** 85% Polypropylene 15% Nylon
- Roll Length:** 30m
- Roll Width:** 2m
- Total Thickness:** 4.8 mm +/-10%
- Total Weight:** 915 g/m<sup>2</sup> +/-10%
- Castor Chair Rating:** BS EN 985 Pass
- Body Voltage Test:** BS ISO 6356:2000 <2kV
- Colour Fastness To Light:** Minimum grade 6
- Flammability:** Euroclass Cf1-s1

# 3230 classic

**3230 classic** is extremely durable fibre bonded carpet, perfectly suited for public buildings, such as schools and gyms and other commercial interiors. Made from a high performance mix of solution dyed fibres, it is available in a choice of 18 practical colourways.



Huddle area



- Q roll 4200 sidewalk
- tile cordiale

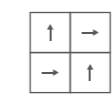
Specification Q

**Product Description:** Fibre Bonded  
**Pile Yarn Description:** 85% Polypropylene 15% Nylon  
**Roll Length:** 30m  
**Roll Width:** 2m  
**Total Thickness:** 6.0 mm +/-10%  
**Total Weight:** 950 g/m<sup>2</sup> +/-10%  
**Castor Chair Rating:** BS EN 985 Pass  
**Body Voltage Test:** BS ISO 6356:2000 <2kV  
**Colour Fastness To Light:** Minimum grade 6  
**Flammability:** Euroclass EF-s1\*

\*200m2 minimum order quantity for Cf1-s1 rating

Specification □

**Product Description:** Fibre Bonded  
**Pile Yarn Description:** 85% Polypropylene 15% Nylon  
**Tile Dimensions:** 50 cm x 50 cm  
**Total Thickness:** 7.8 mm +/-10%  
**Pile Weight:** 950 g/m<sup>2</sup>  
**Castor Chair Rating:** BS EN 985 Pass  
**Body Voltage Test:** BS ISO 6356:2000 <2kV  
**Colour Fastness To Light:** Minimum grade 6  
**Flammability:** Euroclass BF-s1

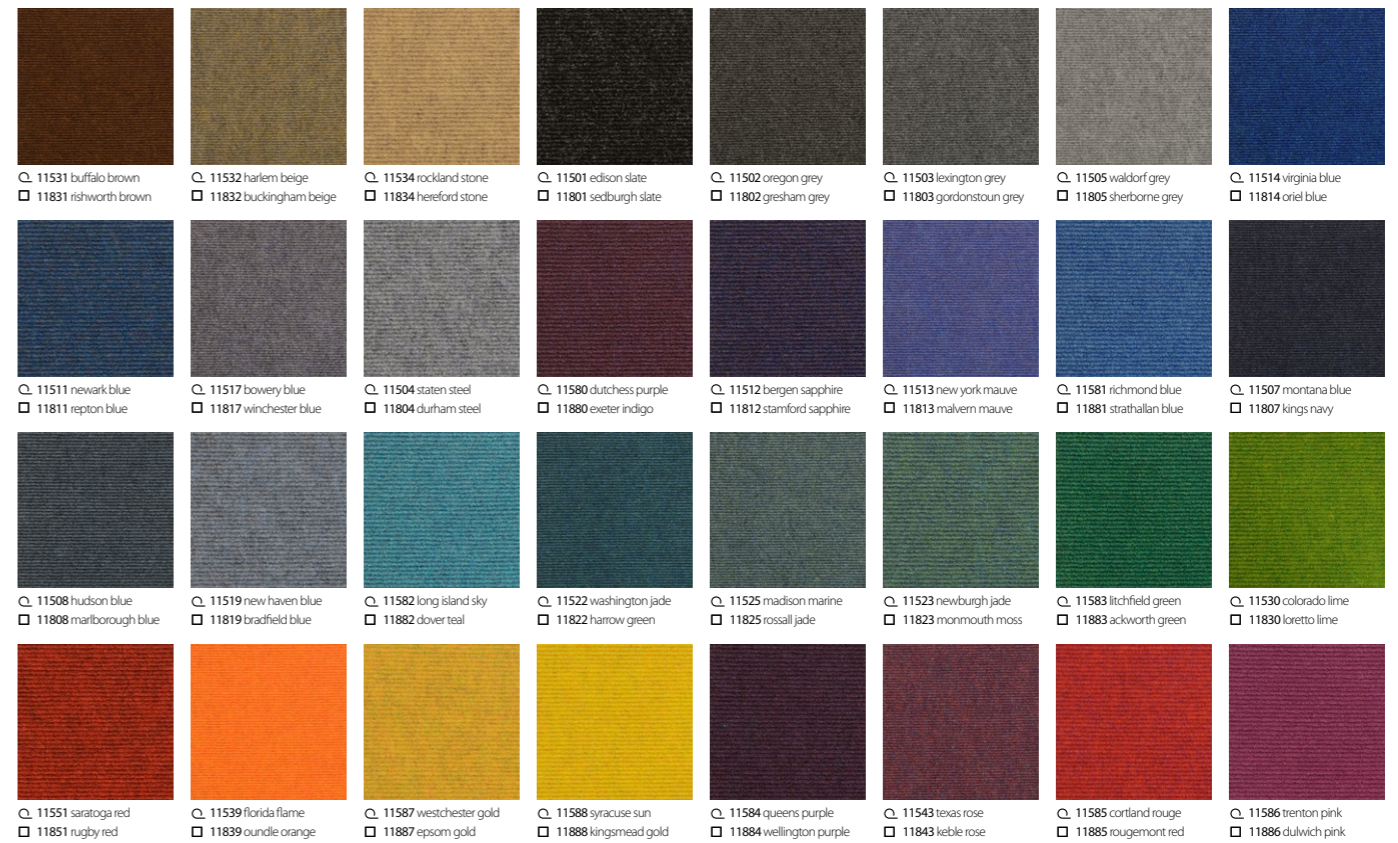


# 4200 sidewalk

**4200 sidewalk** is an extremely durable fine ribbed fibre bonded carpet sheet. It is ideally suited for schools, public buildings and commercial offices. Made from a high performance mix of solution dyed fibres, it is available in a range of 32 vibrant colours.

# cordiale

**cordiale** is an extremely durable fine ribbed fibre bonded carpet tile. It is ideally suited for schools, public buildings and commercial offices. Made from a high performance mix of solution dyed fibres, it is available in a range of 32 vibrant colours.



- Q roll 4200 sidewalk
- tile cordiale

**Specification** Q

**Product Description:** Fibre Bonded  
**Pile Yarn Description:** 85% Polypropylene 15% Nylon  
**Roll Length:** 30m  
**Roll Width:** 2m  
**Total Thickness:** 6.5 mm +/-10%  
**Total Weight:** 975 g/m<sup>2</sup> +/-10%  
**Castor Chair Rating:** BS EN 985 Pass  
**Body Voltage Test:** BS ISO 6356:2000 <2kV  
**Colour Fastness To Light:** Minimum grade 6  
**Flammability:** Euroclass EF-s1\*

\*200m2 minimum order quantity for Cf1-s1 rating

**Specification** □

**Product Description:** Fibre Bonded  
**Pile Yarn Description:** 85% Polypropylene 15% Nylon  
**Tile Dimensions:** 50 cm x 50 cm  
**Total Thickness:** 7.8 mm +/-10%  
**Pile Weight:** 975 g/m<sup>2</sup>  
**Castor Chair Rating:** BS EN 985 Pass  
**Body Voltage Test:** BS ISO 6356:2000 <2kV  
**Colour Fastness To Light:** Minimum grade 6  
**Flammability:** Euroclass BF-s1



# 4400 broadway

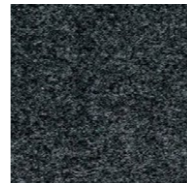
**4400 broadway** is an extremely durable broad ribbed fibre bonded carpet sheet and is particularly suited for public buildings, such as schools, and other commercial interiors. Made from a high performance mix of solution dyed fibres, it is available in a wide range of 32 exciting colourways.

# academy

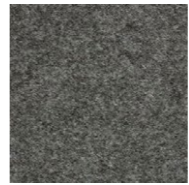
**academy** is an extremely durable broad ribbed fibre bonded carpet tile and is particularly suited for public buildings, such as schools, and other commercial interiors. Made from a high performance mix of solution dyed fibres, it is available in a wide range of 32 exciting colourways.



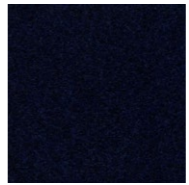
2670 black slate



2640 charcoal grey



2650 steel grey



2620 electric blue



2628 ocean blue



2656 summer sky



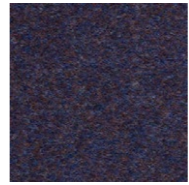
2642 teal green



2631 sea blue



2634 aqua



2666 deep indigo



2690 purple haze



2630 flame red

#### Specification

- Product Description:** Fibre Bonded
- Pile Yarn Description:** 100% Polypropylene
- Tile Dimensions:** 50 cm x 50 cm
- Total Thickness:** 7.8 mm +/-10%
- Pile Weight:** 1000 g/m<sup>2</sup>
- Body Voltage Test:** BS ISO 6356:2000 <2kV
- Colour Fastness To Light:** Minimum grade 6
- Flammability:** Euroclass Bfl-s1



## rialto

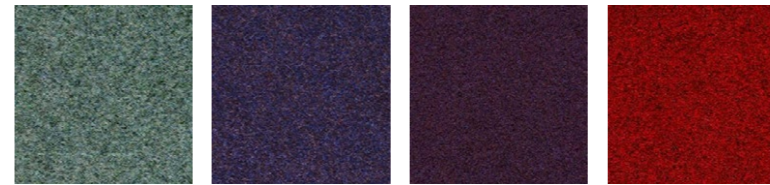
**rialto** is an extremely durable heavy contract velour pile carpet tile. It is constructed from 100% polypropylene yarn and is ideally suited for public buildings, such as schools, and other commercial interiors. It is available in 12 colourways.



6070 yakama slate    6040 armenian grey    6050 norman steel    6023 iceni blue    6060 barona blue    6081 bavarian blue    6028 saxon blue



6056 spartan mauve    6061 skydancer    6036 phoenician green    6083 norse green    6045 trojan green    6055 dorian azure    6082 mayan sky



6022 assyrian jade    6066 navajo mauve    6090 persian purple    6062 red lake

**Specification**

**Product Description:** Fibre Bonded  
**Pile Yarn Description:** 85% Polypropylene 15% Nylon  
**Roll Length:** 30m  
**Roll Width:** 2m  
**Total Thickness:** 6.5 mm +/-10%  
**Total Weight:** 1150 g/m<sup>2</sup> +/-10%  
**Castor Chair Rating:** BS EN 985 Pass  
**Body Voltage Test:** BS ISO 6356:2000 <2kV  
**Colour Fastness To Light:** Minimum grade 6  
**Flammability:** Euroclass EF-s1

**Specification**

**Product Description:** Fibre Bonded  
**Pile Yarn Description:** 85% Polypropylene 15% Nylon  
**Tile Dimensions:** 50 cm x 50 cm  
**Total Thickness:** 10 mm +/-10%  
**Pile Weight:** 1200 g/m<sup>2</sup>  
**Castor Chair Rating:** BS EN 985 Pass  
**Body Voltage Test:** BS ISO 6356:2000 <2kV  
**Colour Fastness To Light:** Minimum grade 6  
**Flammability:** Euroclass BF-s1

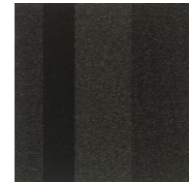


# 5500 luxury

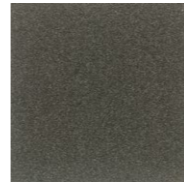
**5500** is an extremely durable fibre bonded carpet sheet, ideally suited for public buildings, such as schools, and other commercial interiors. Made from a high performance mix of solution dyed fibres, it is available in a choice of 18 attractive colourways.

# velour excel

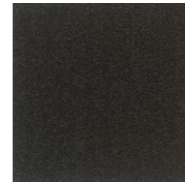
**velour excel** is an extremely durable fibre bonded carpet tile, ideally suited for public buildings, such as schools, and other commercial interiors. Made from a high performance mix of solution dyed fibres, it is available in a choice of 18 attractive colourways.



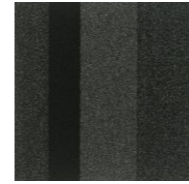
18703 graphite block



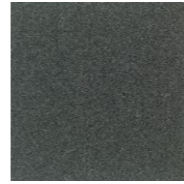
18701 graphite



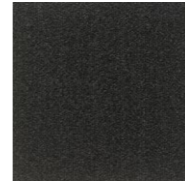
18702 graphite stripe



18706 sterling block



18704 sterling



18705 sterling stripe



18709 cobalt block



18707 cobalt



18708 cobalt stripe

#### Specification

**Product Description:** Performance Barrier System

**Pile Yarn Description:** 100% Solution Dyed Nylon (Polyamide-PA)

**Tile Dimensions:** 50 cm x 50 cm

**Total Thickness:** 10.0 mm +/-10%

**Pile Weight:** 920 g/m<sup>2</sup>

**Tufts per m<sup>2</sup>:** 110,236 g/m<sup>2</sup>

**Castor Chair Rating:** BS EN 985 Pass

**Body Voltage Test:** BS ISO 6356:2000 <2KV

**Colour Fastness To Light:** Minimum grade 6

**Flammability:** Euroclass Bfl-s1



## armour

**armour** offers the ultimate in entrance performance with its combination of absorber and scraper yarns, which protect internal floor finishes by trapping up to 90% of dirt and moisture, tracked in by foot and wheel traffic. The combination of plain, stripe and block stripes in the key blending colours of dark grey, warm grey and blue, will coordinate beautifully with any flooring design scheme. Armour is ideal for primary and secondary entrance areas, as well as lobby, lift areas and staircases.



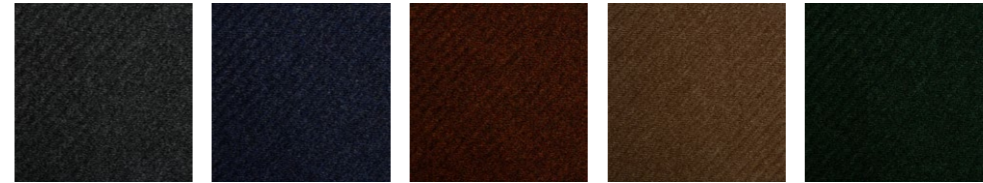
1440 grey      1428 blue      1439 brown      1446 fawn      1436 green

**Specification**

**Product Description:** Fibre Bonded  
**Pile Yarn Description:** 100% Polypropylene  
**Roll Length:** 30m  
**Roll Width:** 2m  
**Total Thickness:** 10.0 mm +/-10%  
**Total Weight:** 1490 g/m<sup>2</sup> +/-10%  
**Colour Fastness To Light:** Minimum grade 6  
**Flammability:** Euroclass EF-s1

# 7700 grimebuster

7700 grimebuster is a heavy contract ribbed fibre bonded carpet. It is ideal for withstanding heavy footfall environments and creating an effective dirt barrier for busy entrances, which lead directly from outside environments.



1640 newmarket grey      1628 haydock blue      1639 goodwood brown      1646 wincanton fawn      1636 curragh green

**Specification**

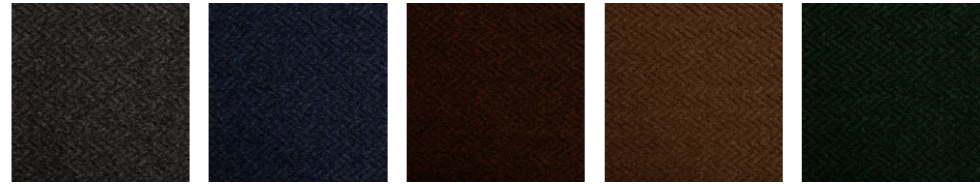
**Product Description:** Fibre Bonded  
**Pile Yarn Description:** 100% Polypropylene  
**Tile Dimensions:** 50 cm x 50 cm  
**Total Thickness:** 12.0 mm +/-10%  
**Pile Weight:** 1170 g/m<sup>2</sup>  
**Total Weight:** 4300 g/m<sup>2</sup>  
**Colour Fastness To Light:** Minimum grade 6  
**Flammability:** Euroclass BF-s1



# grimebuster 50

**grimebuster 50** is a heavy contract fibre bonded carpet tile with a deep diagonal rib surface.

It is ideal for withstanding heavy footfall environments and creating an effective dirt barrier for busy entrances, which lead directly from outside environments.



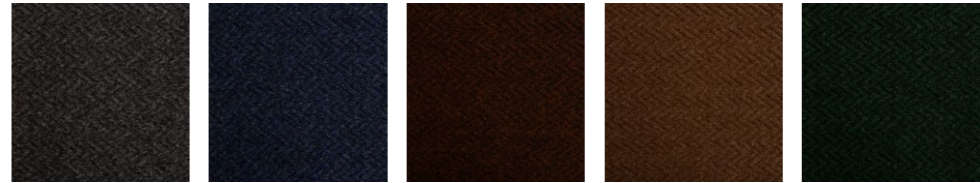
7840 charcoal    7828 blue    7839 brown    7846 fawn    7836 green

**Specification**

**Product Description:** Fibre Bonded  
**Pile Yarn Description:** 100% Polypropylene  
**Roll Length:** 30m  
**Roll Width:** 2m  
**Total Thickness:** 10.0 mm +/-10%  
**Total Weight:** 1490 g/m<sup>2</sup> +/-10%  
**Colour Fastness To Light:** Minimum grade 6  
**Flammability:** Euroclass EF-s1

# 7800 chevrolay

**7700 chevrolay** is a heavy contract chevron ribbed fibre bonded carpet. It is ideal for withstanding heavy footfall environments and creating an effective dirt barrier for busy entrances, which lead directly from outside environments.



6240 alpha grey    6228 beta blue    6239 theta brown    6246 kappa fawn    6236 gamma green

**Specification**

**Product Description:** Fibre Bonded  
**Pile Yarn Description:** 100% Polypropylene  
**Tile Dimensions:** 50 cm x 50 cm  
**Total Thickness:** 12.0 mm +/-10%  
**Pile Weight:** 1490 g/m<sup>2</sup>  
**Total Weight:** 4300 g/m<sup>2</sup>  
**Colour Fastness To Light:** Minimum grade 6  
**Flammability:** Euroclass BF-s1



# chevrolay 50

**chevrolay 50** is a heavy contract chevron ribbed fibre bonded tile with deep chevron design.

It is ideal for withstanding heavy footfall environments and creating an effective dirt barrier for busy entrances, which lead directly from outside environments.

## characteristics of the products

Name	Dimensions Rolls (R) / Tiles (T)	Product Type	Pile Description	Carpet Pile Weight g/m <sup>2</sup>	Tile Total Weight g/m <sup>2</sup>	Carpet Pile Height mm	Tile Total Thickness mm	Number of tufts x/m <sup>2</sup>	Backing	Flammability EN13501	Impact Noise	Number of SKUs	Suitable for Underfloor Heating	Body Voltage kV	Wear Classification	Colour Fastness to Light BS EN ISO 105	Slip Resistant	Castor Chair EN985
<b>Alaska</b>	T 50cm x 50cm	Multilevel Loop	100% Econyl Nylon(PA)	800	4200	5	7.5	226,771	Accummen®	Bfl-S1	22 dB	12	Yes below 27°	<2.0	Class 33	>6	NPD	Pass
<b>Rainfall</b>	T 50cm x 50cm	Multilevel Loop	100% Econyl Nylon(PA)	910	4300	5	7.5	236,220	Accummen®	Bfl-S1	24 dB	12	Yes below 27°	<2.0	Class 33	>6	NPD	Pass
<b>Osaka</b>	T 50cm x 50cm	Multilevel Loop	100% Nylon 6.6 (PA)	795	4200	5	7.5	226,771	Accummen®	Bfl-S1	22 dB	12	Yes below 27°	<2.0	Class 33	>6	NPD	Pass
<b>Hadron</b>	T 50cm x 50cm	Textured Loop	100% Nylon 6.6 (PA)	800	4240	3.5	6.5	177,165	Accummen®	Bfl-S1	23 dB	17	Yes below 27°	<2.0	Class 33	>6	NPD	Pass
<b>Axis</b>	T 50cm x 50cm	Textured Loop	100% Econyl Nylon(PA)	550	4000	3.5	7	177,165	Accummen®	Bfl-S1	20 dB	11	Yes below 27°	<2.0	Class 33	>6	NPD	Pass
<b>Tandem</b>	T 50cm x 50cm	Textured Loop	100% Nylon(PA)	620	4100	3.15	5	235,800	Accummen®	Bfl-S1	20 dB	6	Yes below 27°	<2.0	Class 33	>6	NPD	Pass
<b>Go To</b>	T 50cm x 50cm	Level Loop	100% Nylon(PA)	470	3780	3.0	5.5	196,850	Accummen®	Bfl-S1	20 dB	15	Yes below 27°	<2.0	Class 33	>6	NPD	Pass
<b>Tivoli</b>	T 50cm x 50cm P 25 cm x 100 cm	Level Loop	100% Nylon(PA)	600	4050	4	6.5	196,500	Accummen®	Bfl-S1	23 dB	38	Yes below 27°	<2.0	Class 33	>6	NPD	Pass
<b>Tivoli Mist</b>	T 50cm x 50cm P 25 cm x 100 cm	Level Loop	100% Nylon(PA)	600	4050	4	6.5	196,500	Accummen®	Bfl-S1	23 dB	38	Yes below 27°	<2.0	Class 33	>6	NPD	Pass
<b>Infinity</b>	T 50cm x 50cm	Level Loop	100% Nylon(PA)	550	4000	4.8	7.3	196,500	Accummen®	Bfl-S1	28 dB	18	Yes below 27°	<2.0	Class 33	>6	NPD	Pass
<b>Grade</b>	T 50cm x 50cm P 25 cm x 100 cm	Level Loop	100% Nylon(PA)	620	4100	3.5	6	235,800	Accummen®	Bfl-S1	21 dB	9	Yes below 27°	<2.0	Class 33	>6	NPD	Pass
<b>Balance</b>	T 50cm x 50cm	Level Loop	100% Nylon(PA)	550	4300	4.5	7	176,850	Accummen®	Bfl-S1	24 dB	18	Yes below 27°	<2.0	Class 33	>6	NPD	Pass
<b>Balance Echo</b>	T 50cm x 50cm P 25 cm x 100 cm	Level Loop	100% Nylon(PA)	550	4300	4.5	7	176,850	Accummen®	Bfl-S1	24 dB	18	Yes below 27°	<2.0	Class 33	>6	NPD	Pass
<b>Balance Stripe</b>	T 50cm x 50cm	Level Loop	100% Nylon(PA)	550	4300	4.5	7	176,850	Accummen®	Bfl-S1	24 dB	6	Yes below 27°	<2.0	Class 33	>6	NPD	Pass
<b>Balance Greyscale</b>	T 50cm x 50cm	Level Loop	100% Nylon(PA)	550	4300	4.5	7	176,850	Accummen®	Bfl-S1	24 dB	1	Yes below 27°	<2.0	Class 33	>6	NPD	Pass
<b>Lateral</b>	T 50cm x 50cm	Structure Bonded	85%PP 15%PA	950	4200	5.5*	7.8	-	Accummen®	Bfl-S1	18 dB	18	Yes below 27°	<2.0	HC	>6	NPD	Pass
<b>Zip</b>	T 50cm x 50cm	Structure Bonded	85%PP 15%PA	1000	4250	5.5*	8	-	Accummen®	Bfl-S1	17 dB	11	Yes below 27°	<2.0	HC	>6	NPD	Pass
<b>Code</b>	T 50cm x 50cm	Structure Bonded	85%PP 15%PA	1000	4250	5.5*	8	-	Accummen®	Bfl-S1	17 dB	11	Yes below 27°	<2.0	HC	>6	NPD	Pass
<b>Origin</b>	T 50cm x 50cm	Cut Pile	100% Nylon(PA)	850	4300	5	8	157,480	Accummen®	Bfl-S1	23 dB	13	Yes below 27°	<2.0	Class 33	>6	NPD	Pass
<b>3230 Classic</b>	R 2m x 30m	Fibre Bonded Sheet	85%PP 15%PA	915	-	4.8	-	-	Uniform	Cfl-S1	17 dB	18	Yes below 27°	<2.0	HC	>6	NPD	Pass
<b>4200 Sidewalk</b>	R 2m x 30m	Fibre Bonded Sheet	85%PP 15%PA	950	-	6	-	-	Uniform	Efl-S1	18 dB	32	Yes below 27°	<2.0	HC	>6	NPD	Pass
<b>4200 SidewalkFR</b>	R 2m x 30m	Fibre Bonded Sheet	85%PP 15%PA	950	-	6	-	-	Uniform	Cfl-S1	18 dB	32	Yes below 27°	<2.0	HC	>6	NPD	Pass
<b>Cordiale</b>	T 50cm x 50cm	Fibre Bonded Tile	85%PP 15%PA	950	4200	6	7.8	-	Accummen®	Bfl-S1	18 dB	32	Yes below 27°	<2.0	HC	>6	NPD	Pass
<b>4400 Broadway</b>	R 2m x 30m	Fibre Bonded Sheet	85%PP 15%PA	975	-	6.5	-	-	Uniform	Efl-S1	19 dB	32	Yes below 27°	<2.0	HC	>6	NPD	Pass
<b>4400 BroadwayFR</b>	R 2m x 30m	Fibre Bonded Sheet	85%PP 15%PA	975	-	6.5	-	-	Uniform	Cfl-S1	19 dB	32	Yes below 27°	<2.0	HC	>6	NPD	Pass
<b>Academy</b>	T 50cm x 50cm	Fibre Bonded Tile	85%PP 15%PA	975	4200	6.5	7.8	-	Accummen®	Bfl-S1	21 dB	32	Yes below 27°	<2.0	HC	>6	NPD	Pass
<b>Rialto</b>	T 50cm x 50cm	Fibre Bonded Tile	100%PP	1000	4450	6	7.8	-	Accummen®	Bfl-S1	-	12	Yes below 27°	<2.0	HC	>6	NPD	Pass
<b>5500 Sheet</b>	R 2m x 30m	Fibre Bonded Sheet	85%PP 15%PA	1150	-	6.5	-	-	Uniform	Efl-S1	21 dB	18	Yes below 27°	<2.0	HC	>6	NPD	Pass
<b>Velour Excel</b>	T 50cm x 50cm	Fibre Bonded Tile	85%PP 15%PA	1200	4900	8	10	-	Accummen®	Bfl-S1	21 dB	18	Yes below 27°	<2.0	HC	>6	NPD	Pass

## entrance matting

Name	Dimensions Rolls (R) / Tiles (T)	Product Type	Pile Description	Carpet Pile Weight g/m <sup>2</sup>	Total Weight g/m <sup>2</sup>	Thickness mm	Backing	Flammability EN13501	Number of SKUs	Wear Classification	Colour Fastness to Light BS EN ISO 105	Slip Resistant
<b>Armour</b>	T 50cm x 50cm	Cut Pile	100%PA	920	4500	10	Accummen®	Bfl-S1	9	Class 33	>6	DS
<b>7700 Grimebuster</b>	R 2m x 30m	Fibre Bonded Sheet	100% PP	-	1490	10	Uniform	Efl-S1	5	HC	>6	NPD
<b>Grimebuster 50</b>	T 50cm x 50cm	Fibre Bonded Tile	100% PP	1490	4300	12	Accummen®	Bfl-S1	5	HC	>6	NPD
<b>7800 Chevrolay</b>	R 2m x 30m	Fibre Bonded Sheet	100% PP	-	1490	10	Uniform	Efl-S1	5	HC	>6	NPD
<b>Chevrolay 50</b>	T 50cm x 50cm	Fibre Bonded Tile	100% PP	1490	4300	12	Accummen®	Bfl-S1	5	HC	>6	NPD

# Appendix

7	rainfall	45	lateral
9	osaka	47	zip
11	alaska	49	code
13	hadron	51	origin
15	axis	53	3230 classic
17	tandem	55	4200 sidewalk
19	go to	55	cordiale
21	tivoli mist	57	4400 broadway
23	tivoli tile 2019	57	academy
27	tivoli plank 2019	59	rialto
29	tivoli tile	61	5500 luxury
31	tivoli plank	61	velour excel
33	infinity	63	armour
35	grade	65	7700 grimebuster
37	balance	65	grimebuster 50
39	balance echo	67	7800 chevrolay
41	balance stripe	67	chevrolay 50
43	balance greyscale		



**ENVIRONMENT  
FRIENDLY  
CARPETS**



**burmatex<sup>®</sup>**

**Head Office**

Victoria Mills, The Green  
Ossett  
West Yorkshire  
WF5 0AN  
United Kingdom

Tel: +44 (0) 1924 262525  
Fax: +44 (0) 1924 280033  
Email: [projects@burmatex.co.uk](mailto:projects@burmatex.co.uk)  
Web: [www.burmatex.co.uk](http://www.burmatex.co.uk)

**International Enquires**

[international@burmatex.co.uk](mailto:international@burmatex.co.uk)

**Eastern Europe Office**

Burmatex Sp. z o.o.  
Andersia Business Centre  
Plac Andersa 7  
61-894 Poznań, Poland

Tel: + 48 61 668 3883  
Mob: + 48 603 548 074  
Mob: + 48 696 057 065  
email: [biuro@burmatex.pl](mailto:biuro@burmatex.pl)

**Plank installation methods**

Monolithic



Half Drop



Random Drop



Herringbone



**Tile installation methods**

Quarter Turn



Monolithic



Random



Brick



Half Drop



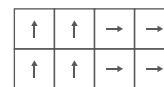
Alternate rows  
rotated 180°



Alternate tiles  
rotated 180°



Large Quarter Turn



Parquet

