



 broadleaf

Beautiful Real Wood



# Welcome to Broadleaf

Welcome to Broadleaf and our unique range of beautiful real wood. Based in Wales and still family run, we have just celebrated our 15th birthday and are proud to be known for quality, service and choice as well as being the UK's leading wood flooring manufacturer.

In addition to our acclaimed signature collections you will find plenty of exciting new floors in this latest brochure reflecting current interior trends and taking full advantage of our superb manufacturing capabilities here in West Wales.

Beautiful Real Wood is at the heart of everything we do here at Broadleaf along with a commitment to offering unrivalled choice and excellent service to all of our customers.

Our timber is sustainably sourced from Europe's finest forests, carefully selected for its particular purpose and expertly crafted to the highest standards. We combine traditional craftsmanship with the best of modern machining methods to deliver beautifully made products that are easy to install and offer you maximum versatility and performance.

Most of our floors are available in a choice of different widths and board types, as well as grades and the majority can be successfully combined with underfloor heating. Our internal doors can be made to measure and finished to order and our external doors are traditionally handbuilt as standard. And if you can't find what you want in our extensive range, we will be happy to come up with a bespoke solution be it a floor finish, a door design or complete staircase.

Our team are always on hand to offer honest, expert advice and support from first enquiry to aftersales queries be it through one of our inspiring showrooms or from a distance.

We hope you enjoy the brochure and find what you are looking for.

Broadleaf  
Beautiful Real Wood

# Contents



## Floors

Beautiful real wood floors are inimitable. Synonymous with quality and style, they bring sensuous, natural warmth to any room. Versatile and hardwearing they only get better with age and their appeal is truly timeless.

3 Minute Guide	7
Broadleaf Colour Guide	8
Classic	12
Nuances	18
Artisan	26
Brushed & Burned	30
Heritage	36
Old House	42
Tempest	48
Metro	54
Coastal & Country	60
Traditional Parquet	66
Vintage Oak Parquet	68
Pullman Vintage Parquet	74

## Commercial



Floors Essential Info	82
Floors Installation Guide	83
Flooring Selector	88

This brochure is split into key product sections, each followed by an information section which contains additional product details and important technical guidance.

We take great care to provide accurate descriptions of timber characteristics and variations, and to provide illustrative photos and we are confident that the brochure is a representative guide, but please bear in mind that timber is a natural product and there will always be some difference between printed copy and real product.

## Doors



Doors are one of the most important architectural features of any building. They define its personality and are one of the easiest and most overlooked ways to transform the whole look and feel of a house.

Internal Plank	92
Internal Panelled	94
Internal Essential Info	97
External	98
External Essential Info	101



## Extras and Accessories



From impressive Oak trusses that are the focal point of a room to discreet thresholds that make the transition between different floor coverings barely noticeable our Extras & Accessories are all about beautiful details.

<b>Oak Trusses</b>	106
<b>Stair Cladding &amp; Components</b>	108
<b>Ironmongery</b>	112
<b>Skirting and Trims</b>	116
<b>Finishes and Fitting Products</b>	117

## Design



Nothing captures the warmth and wonder of nature like wood, and nothing defines the spirit of your home like a unique piece of handcrafted joinery.

Be it a bold focal point or more subtle architectural feature, rustic or refined, its timeless organic beauty will enchant and impress.

Customer services

122

Beautiful real wood floors are inimitable. The essence of quality and style they bring natural warmth and an instant touch of luxury to any room. Versatile, unique and with truly timeless appeal they are the perfect foundation for any interior.

Broadleaf real wood floors are distinctive. Expertly crafted from carefully selected timber and finished to the highest standards, our exclusive collection offers you an unrivalled choice of colours, textures and styles.

# Floors







Warm Oak

# 3 Minute Guide to Broadleaf Floors

We know that choosing a wood floor for the first time can be daunting but hopefully this simple guide should make using this brochure and choosing your Broadleaf wood floor as easy as possible.

## Grades

Grades are the way that we define the amount of natural variation and knots in our floors to create different aesthetic styles. We have 5 grades of plank floor and 3 grades of parquet floor. These are described in our Classic and Traditional Parquet collections where they are available unfinished to be sealed in situ.

The rest of our floors are made on these grades. For each floor we choose the grade that we feel best suits its style and then add texture, colour and a little Broadleaf magic to create the end result. The standard grade used is noted in the introduction to the collection or the product description. If you would prefer your floor to be made on a different grade, this is not a problem but this will need to be specified at the time of order and the price adjusted accordingly.

Although no description or image can be exhaustive, and every wood floor is unique, used together our product images and descriptions should give you a good idea of how a floor will look overall.

Where knots are a feature of our floors we describe them as small or large. Small knots will not normally exceed 25mm across their width and create a natural, warm looking floor. Large knots are those that are bigger than this and create a floor with a more rustic character.

## Types of board

Clients often ask about the difference between solid and engineered boards and which of these they need. In simple terms, solid boards are made from a single piece of

timber whilst engineered boards have a multilayered construction. In the case of planks this gives them additional stability and opens up additional installation options. In the case of parquet, it makes very little difference to their stability or installation options.

So, if you choose a parquet floor, there is no need to worry about the solid or engineered question at all.

If you choose plank, whether you need a solid or engineered board will depend on how and where you are looking to fit your floor; but as all of our plank floors come in at least one engineered option you don't need to worry about this upfront. Just find the floor you like and then check the product selector (P88), or ask us to confirm which option you need for your installation.

You don't need to worry about an engineered option being a compromise in quality either. We don't use the multilayered construction as an excuse to put cheap materials in the base layer so the floor doesn't feel or wear like solid wood. Our award winning Strata board is made from 3 layers of oak and our Essential engineered board, although not all oak has a premium hardwood base layer that delivers excellent performance.

## Size





Most of our floors are available in a choice of widths. In the case of plank floors these can be used together if you wish to create a more traditional mixed width floor. All of our plank floors are supplied in generous lengths.

A simple table next to each product shows which widths are available in which types of board. Full dimensions and installation options can be found in the product selector (P88).

## Finishes


All wood floors need to be finished with a suitable sealing product before use. The majority of our floors are supplied pre-finished as standard, ready to walk on the day they are fitted. Those that are not have this as an optional extra. The exceptions to this are our Traditional Parquet floors, which need to be sanded and sealed after installation and our Vintage Parquet floors which need to be top coated.

Finishing options for each product are marked by the following symbols:

-  Fully finished
-  can be pre-sealed to order
-  Unfinished
-  Semi finished – topcoat after fitting

All finished Broadleaf floors are sealed using hardwax oils to create a natural look that is hardwearing, easy to maintain and can be locally repaired if required.

## Underfloor Heating

It is a common myth that solid wood floors cannot be laid over underfloor heating. We have been successfully supplying solid wood floors for this purpose for over 10 years and are recommended by Nu Heat, the UK's leading underfloor heating supplier, to do just that. Most of our floors can be used over underfloor heating in one form or another and where this is the case they are marked with a . Details of exactly which widths and board structures will work in this situation and whether these will need re-kilning first can be found in the flooring selector on P88.



# Broadleaf colour guide

## White



**Bleached Oak**  
Page 23



**Whitewashed Oak**  
Page 24



**Porcelana**  
Page 35



**Clifton**  
Page 47



**Maestro**  
Page 52



**Porcelain Oak**  
Page 55



**Iced Oak**  
Page 55



**Limed & Washed**  
Page 64



**Quayside**  
Page 65

## Grey



**Worn Oak**  
Page 20



**Weavers**  
Page 28



**Smithfield Oak**  
Page 37



**Greenwich Oak**  
Page 40



**Apsley**  
Page 43



**Stokesay**  
Page 47



**Blakeney**  
Page 47



**Mistral**  
Page 49



**Etesian**  
Page 49



**Bora**  
Page 49



**Sirocco**  
Page 53



**Solano**  
Page 53



**Shamal**  
Page 53



**Urban Grey**  
Page 56



**Seaside Grey**  
Page 61



**Cloudy Grey**  
Page 61



**Weathered Grey**  
Page 61



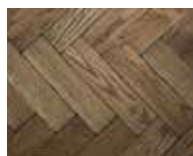
**Washed Grey**  
Page 62



**Shingle Grey**  
Page 62



**Silvered Oak**  
Page 69



**Worn Oak**  
Page 70



**Santa Lucia**  
Page 75



**Chamartin**  
Page 78



**Waverley**  
Page 78



**Bergen Blocks**  
Page 79

### Helpful Hint

If you can't find quite what you're looking for, just let us know - our colour specialists can make or match most things.



### Styling note

Combine dramatically contrasting monochromes with this dark, handsome floor to create a style that is individual and timeless.



## Light



**Railway Oak**  
Page 13



**Cottage Oak**  
Page 13



**Elegance Oak**  
Page 13



**Gallery Oak**  
Page 16



**Extra Wide Oak**  
Page 16



**Natural Oak**  
Page 19



**Warm Oak**  
Page 19



**Aged Oak**  
Page 20



**Nude Oak**  
Page 24



**Tailors**  
Page 28



**Hunters**  
Page 28



**Slaters**  
Page 29



**Millers**  
Page 29



**Clasico Light**  
Page 31



**Arriba**  
Page 33



**Esmerelda**  
Page 34



**Venturosa**  
Page 35



**Guildhall Oak**  
Page 39



**Chiswick**  
Page 43



**Hardwick**  
Page 46



**Calima**  
Page 52



**Sunbleached**  
Page 62



**Oyster Light**  
Page 65



**Cottage Oak Blocks**  
Page 67



**Elegance Oak Blocks**  
Page 67



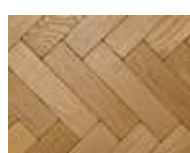
**Gallery Oak Blocks**  
Page 67



**Nude Oak**  
Page 69



**Aged Oak**  
Page 70



**Classic Oak**  
Page 73



**Connolly**  
Page 78



**Montparnasse**  
Page 79

## Dark



**Polished Oak**  
Page 19



**Rich Oak**  
Page 20



**Thatchers**  
Page 27



**Hatters**  
Page 27



**Masons**  
Page 29



**Clasico Medium**  
Page 31



**Barlovento**  
Page 33



**Sur de Lago**  
Page 34



**Pembroke**  
Page 37



**Trinity Oak**  
Page 39



**Glamorgan Oak**  
Page 39



**Trafalgar Oak**  
Page 40



**Ivy Oak**  
Page 40



**Osbourne**  
Page 43



**Chartwell**  
Page 46



**Gainsborough**  
Page 46



**Diablo**  
Page 52



**Sepia Fired**  
Page 56



**Terra Fired**  
Page 59



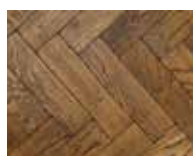
**Sienna Fired**  
Page 59



**Breakwater**  
Page 64



**Smoked Oak**  
Page 69



**Rich Oak**  
Page 70



**Dark Oak**  
Page 73



**Merbau Blocks**  
Page 73



**St Pancras**  
Page 75



**Lichtenberg**  
Page 79

## Black



**Dark Oak**  
Page 23



**Brewers**  
Page 27



**Clasico Dark**  
Page 31



**Carnero**  
Page 33



**Mayan**  
Page 34



**Casablanca**  
Page 35



**Grafton Oak**  
Page 37



**Midnight Oak**  
Page 55



**Raven Oak**  
Page 56



**Gare Du Nord**  
Page 75

# Classic

Our Classic Oak collection includes a choice of stunning oak floors each with a different level of natural variation to offer a rich choice of styles. From the truly rustic to the terribly elegant these versatile boards are the perfect complement to traditional decor as well as providing a stunning platform for more contemporary furnishings.

Classic Oak boards are supplied filled where necessary, sanded and ready to finish. For fully finished options see our Nuances collection.



### Railway Oak

Named for its resemblance to original railway boards, once used to floor freight wagons across the globe, this stunning rustic floor features larger knots, splits and a fabulous varied grain and looks great contrasted with sleek modern furnishings as well as teamed with more traditional styling. Available in Strata only.

Type	Width
Strata	150 / 200



### Cottage Oak

An oak floor full of character that is rich in natural colour variation, features lively figuring and both large and small knots Cottage Oak has a relaxed feel that is ideally suited to traditionally styled buildings and interiors. Available in a choice of Traditional solid or Strata boards.

Type	Width
Solid	105 / 150 / 200
Strata	150 / 200
Overlay	135



### Elegance Oak

A wonderfully versatile oak floor featuring warm golden tones and smaller knots whose subtle personality can carry almost any style of décor Elegance Oak is most often chosen for classic modern or period interiors. Available in a choice of Traditional solid or Strata boards.

Type	Width
Solid	105 / 150 / 200
Strata	150 / 200
Overlay	135





Elegance Oak



Railway Oak



### Gallery Oak

A stylish, sophisticated oak floor that is almost knot free and whose honeyed tones and pretty figuring create a subtle, luxurious feel that marries beautifully with more formal or minimal interiors. Available in a choice of Traditional solid or Strata boards.

Type	Width
Solid	105 / 150
Strata	150 / 200
Overlay	135



### Extra Wide Oak

An oak floor of truly majestic proportions our Extra Wide boards feature some larger knots and colour variation but overall create a clean, streamlined look and feel. Inherently impressive this stunning floor brings a fabulous sense of space and grandeur to any interior. Available in Strata only.

Type	Width
Strata	300



### What is Strata?

Strata is our award winning solid oak engineered board which offers even more fitting options without the compromise of plywood.



Extra Wide  
Oak

# Nuances

Originally inspired by beautiful pieces of furniture, our Nuances collection blurs the line between classic and contemporary style. A world away from conventional stained finishes these unique oak shades enhance rather than mask the timber beneath to create a natural look that is wonderfully versatile.

All Nuances shades feature a hardwearing, matt satin hardwax oil finish. By popular demand this range now includes an Essentials engineered option in addition to Strata and Solid Chevrons as well as planks.



## Natural Oak

Simple, classic and versatile the gently enhanced natural golden oak tones of this floor have timeless appeal and can be successfully teamed with almost any style of interior. Made as standard on our Cottage Oak but also available on any of the floors in our Classic collection.

Type	Width
Solid	105 / 150 / 200
Strata	150 / 200 / 300
Overlay	135
Essentials	190
Solid Chevrons	90



## Polished Oak

Inspired by an old polished oak table this indulgent chocolate toned floor has an inherently period feel but is commonly chosen to balance and contrast with bright contemporary interiors. Made as standard on our Cottage Oak but also available on any of the floors in our Classic collection.

Type	Width
Solid	105 / 150 / 200
Strata	150 / 200 / 300
Overlay	135
Essentials	190
Solid Chevrons	90



## Warm Oak

A wonderful soft shade that gently enriches the natural oak tones with hints of russet and is instantly reminiscent of turn of the century furniture mellowed by the sun. Made as standard on our Cottage Oak but also available on any of the floors in our Classic collection.

Type	Width
Solid	105 / 150 / 200
Strata	150 / 200 / 300
Overlay	135
Essentials	190
Solid Chevrons	90





### Rich Oak

One of our original Nuances collection and still one of the most popular; this luxuriant nut brown shade with just a hint of auburn brings a touch of grandeur to any room and is the perfect foil for opulent textiles and sumptuous colours. Made as standard on our Cottage Oak but also available on any of the floors in our Classic collection.

Type	Width
Solid	105 / 150 / 200
Strata	150 / 200 / 300
Overlay	135
Essentials	190
Solid Chevrons	90



### Worn Oak

A subtle tinge of soft deep grey picks out the grain of this floor and deepens its natural tones to a soft bronze to create an attractively worn look that is both timeless and versatile whatever your style. Made as standard on our Cottage Oak but also available on any of the floors in our Classic collection.

Type	Width
Solid	105 / 150 / 200
Strata	150 / 200 / 300
Overlay	135
Essentials	190
Solid Chevrons	90



### Aged Oak

'Not too new looking but not too dark' if that is your brief then this is your floor; with just a light wash of colour to bring out the grain and enrich the natural oak tones it instantly has a slightly lived in feel from the day it is laid. Made as standard on our Cottage Oak but also available on any of the floors in our Classic collection.

Type	Width
Solid	105 / 150 / 200
Strata	150 / 200 / 300
Overlay	135
Essentials	190
Solid Chevrons	90





Rich Oak



Bleached Oak



## Bleached Oak

A subtle lightened floor with a hint of warm cream that is perfect for any room you want to be calm, light and airy. Perfect for an English country feel or to add a contemporary twist to more classic interiors. Made as standard on our Elegance Oak but also available on Gallery or Extra Wide.

Type	Width
Solid	105 / 150 / 200
Strata	150 / 200 / 300
Overlay	135
Essentials	190
Solid Chevrons	90



## Dark Oak

Inky in tone, understated in style this floor is deep in hue and yet surprisingly light in feel. Wonderfully adaptable it combines equally well with traditional gothic and tudor inspired interiors or a lighter contemporary look. Made as standard on our Cottage Oak but also available on any of the floors in our Classic collection.

Type	Width
Solid	105 / 150 / 200
Strata	150 / 200 / 300
Overlay	135
Essentials	190
Solid Chevrons	90



## What is Essentials?

Essentials is our high quality, 15mm engineered oak board.



## Nude Oak

As nature intended – only better. The untouched look of bare wood in a fully sealed floor designed to cope with the demands of modern living. Many have tried to perfect this combination – we have succeeded. Created on our Cottage Oak for a gently rustic look that suits naturally inspired rooms of all styles it is also available on any of our Classic oak floors.

Type	Width
Solid	105 / 150 / 200
Strata	150 / 200 / 300
Overlay	135
Essentials	190
Solid Chevrons	90



## Whitewashed Oak

Clean and crisp, this pretty whitened floor has a fresh modern feel and works wonderfully as a platform for classic Scandinavian or New England style as well as sleek contemporary furnishings. Made as standard on our Elegance Oak but also available on Gallery or Extra Wide.

Type	Width
Solid	105 / 150 / 200
Strata	150 / 200 / 300
Overlay	135
Essentials	190
Solid Chevrons	90



### Need technical advice?

See pages 82-89 for essential information and our comprehensive floor installation guide.



Nude Oak

Our exciting new Artisan collection was inspired by our fabulously rustic Railway Oak whose hallmark knots, splits and colour variation is the perfect canvas for floors that are all about rich texture and warm tones.

Designed with traditional, industrial and rustic interiors in mind, all of the floors in this collection feature an authentically brushed surface to emphasise their grain and a hardwearing, natural looking matt satin finish.

# Artisan



### Brewers

Though we say it ourselves we are quite proud of our Brewers Oak, which has been cleverly designed to mirror a pitch treated floor sanded back to reveal the original oak beneath. Black in tone but light in feel this is a reclaimed style floor with a modern industrial feel.

Type	Width
Strata	150 / 200



### Thatchers

A gorgeous nut brown floor enhanced by the natural colour variation of the Railway grade and a beautiful darker grain. Easily matched with almost any style of décor or colour scheme we are sure that Thatchers will quickly be a member of the Broadleaf top 10.

Type	Width
Strata	150 / 200



### Hatters

Unashamedly traditional in style, our Hatters Oak is an indulgent blend of polished chestnut tones and gently worn edges that set off its richly textured surface to perfection and mimic the look and feel of C16th furniture.

Type	Width
Strata	150 / 200



---

### Tailors

Simple and uncomplicated, Tailors Oak has no added colour; just a hardwearing matt satin finish that enhances its spectrum of natural tones and catches the light to highlight its grain. A timeless, adaptable rustic floor that suits almost any interior.

Type	Width
Strata	150 / 200



---

### Weavers

A traditionally styled floor with a surprisingly modern feel, Weavers Oak combines the natural golden hues of oak with a deep grey that picks out its grain and creates energy and interest without drama.

Type	Width
Strata	150 / 200



---

### Hunters

If you are looking for a floor that has a vintage feel but is not too dark or distressed in style, Hunters Oak with its spectrum of butterscotch tones and just a hint of burnt sugar is just the ticket.

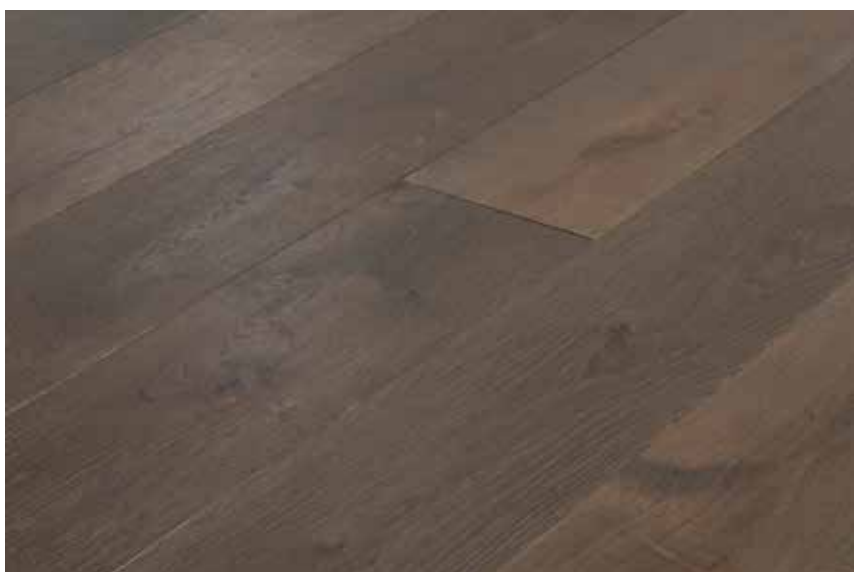
Type	Width
Strata	150 / 200



## Slaters

The perfect choice for a subtly reclaimed look, the warm honeyed tones of our Slaters Oak picked out with soft grey have the look and feel of boards gently worn over time and then sanded back for the next generation.

Type	Width
Strata	150 / 200



## Masons

If you were going to call any of our Artisan floors sophisticated it would be this one – sultry chocolate tones with a subtly accentuated paler grain and probably the most contemporary looking floor of the collection.

Type	Width
Strata	150 / 200



## Millers

Washed with our well loved Aged finish, this floor has an instantly lived in feel and a pretty emphasised grain that is sure to make it a perennial favourite. The perfect backdrop for a traditional look or bolder more industrial décor.

Type	Width
Strata	150 / 200

An original in its own right our Brushed and Burned Oak is the ultimate reclaimed style floor. Created using a unique process that authentically ages each board in the same way as the natural passage of time it has a softly textured surface with a rich patina and natural darkening from edge to centre.

All boards in this range have a hardwearing, matt satin finish and are made as standard on our Cottage Oak. If you prefer they can also be ordered on the other grades in the Classic collection.

# Brushed & Burned



### Clasico Light

A gently aged reclaimed style floor perfect for a Victorian or refurbished look with boards ranging from those only slightly burned at the edges to those with definite burning at the edges and traces of burning towards the centre enhanced by our hard wearing Natural finish. Also available in an unfinished board – Puro – to be sealed in situ after installation.

Type	Width
Solid	105 / 150 / 200
Strata	150 / 200 / 300
Overlay	135



### Clasico Medium

A more distinctly aged floor that still retains plenty of golden tones, with boards ranging from those with definite burning at the edges and traces of burning towards the centre to those with burning across most of their face. Sealed with our low maintenance Natural finish this, our most popular Clasico board is also available as an unfinished Puro board to be sealed in situ if you prefer.

Type	Width
Solid	105 / 150 / 200
Strata	150 / 200 / 300
Overlay	135



### Clasico Dark

Perfect if you are looking for a genuine 200 year old feel these stunning boards have a substantial degree of burning across most of their face which is enriched with our beautiful Natural finish to create a dramatic floor that always begs the question – ‘Is it original’? Alternatively this floor can be supplied in an unfinished board – Puro – to be sealed in situ after installation.

Type	Width
Solid	105 / 150 / 200
Strata	150 / 200 / 300
Overlay	135





Clasico Dark



## Arriba

Created on our Light Brushed & Burned board and enhanced with a subtle wash of colour to soften its natural golden tones and highlight the pretty figuring in the grain of the timber Arriba is a subtle, less newly refurbished looking reclaimed style floor.

Type	Width
Solid	105 / 150 / 200
Strata	150 / 200 / 300
Overlay	135



## Barlovento

A clever combination of our Medium Brushed & Burned board and an inviting chestnut brown overtone which reduces the visible contrast between the burned and unburned areas to create a rich yet subtly aged oak floor. Perfect for renovations or to add an instant touch of history to a newly built interior.

Type	Width
Solid	105 / 150 / 200
Strata	150 / 200 / 300
Overlay	135



## Carnero

A subtle, less dramatic interpretation of our Dark Brushed & Burned board with less contrast between the richly burned areas and those retaining their natural tones and creating a softly toned, authentically centuries old feel that marries as well with contemporary décor as traditional.

Type	Width
Solid	105 / 150 / 200
Strata	150 / 200 / 300
Overlay	135





### Esmerelda

A blend of pretty caramel tones over our Light Brushed & Burned board combine to create a warm, delicately aged board that is instantly familiar and beautifully versatile. We expect this new addition to become a firm favourite for properties of all styles.

Type	Width
Solid	105 / 150 / 200
Strata	150 / 200 / 300
Overlay	135



### Sur De Lago

Our Medium Brushed & Burned board balanced with a fabulous cocoa brown shade that brings out the grain of the timber to perfection and results in a richly toned, gently aged oak floor that would look equally at home in a country house hotel or a harbourside penthouse.

Type	Width
Solid	105 / 150 / 200
Strata	150 / 200 / 300
Overlay	135



### Mayan

A Dark Brushed and Burned floor overlaid with warm copper tones that is striking yet inviting and looks particularly impressive in large areas with plenty of light to catch the surface and pick out the grain or contrasted with sleek contemporary furnishings.

Type	Width
Solid	105 / 150 / 200
Strata	150 / 200 / 300
Overlay	135





### Casablanca

Dark Brushed and Burned with a subtly whitened grain that highlights the pretty figuring of its softly textured surface and creates a floor with a lighter, more modern feel and an attractive multidimensional tone. A great way to add a contemporary twist to a traditional space.

Type	Width
Solid	105 / 150 / 200
Strata	150 / 200 / 300
Overlay	135



### Porcelana

A pretty white wash over our Medium Brushed & Burned board gives it a fresh, light feel and creates a thoroughly modern looking reclaimed style floor that is a perfect backdrop for contemporary country or shabby chic interiors.

Type	Width
Solid	105 / 150 / 200
Strata	150 / 200 / 300
Overlay	135



### Venturosa

An enhanced version of our Clasico light, with added surface texture to further bring out the fabulous figuring and create an almost driftwood look and feel that is wonderfully tactile and naturally anti slip.

Type	Width
Solid	105 / 150 / 200
Strata	150 / 200 / 300
Overlay	135



A beautiful old oak floor exudes a rich sense character that transforms any room, and our Heritage Oak collection is the ideal way to authentically recreate this unique look and feel. Wonderfully versatile the variety of shades and styles are as happily used to match or mimic original boards in a period property as to bring character or provide contrast in a contemporary one.

All of our Heritage Oak floors are made on Cottage Oak as standard but if you prefer can be made on any of the other floors in our Classic collection. They are all fully finished with our durable, matt satin hardwax oil.

# Heritage



### Smithfield Oak

An exciting mix of smoky grey and warm bronze that follows the natural colour variation of the timber to create an authentic but distinctive vintage oak floor that looks fabulous combined with modern styling.

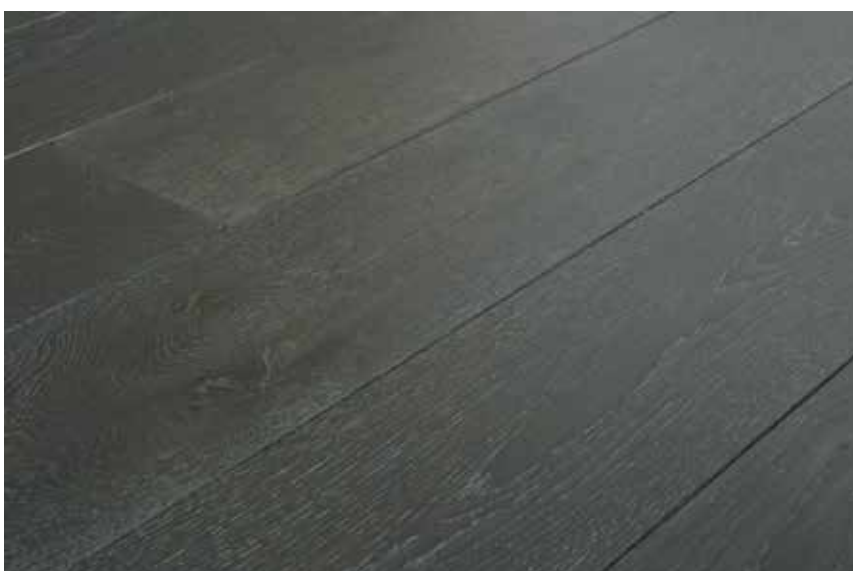
Type	Width
Solid	105 / 150 / 200
Strata	150 / 200 / 300
Overlay	135



### Pembroke Oak

A vibrant and inviting floor full of the rich auburn tones of timber long mellowed by a warm summer sun and with a slight surface texture to add interest and bring out the grain. Combine these boards with strong colours or simple whites to stunning effect in any style of interior.

Type	Width
Solid	105 / 150 / 200
Strata	150 / 200 / 300
Overlay	135



### Grafton Oak

Soft charcoal with just a hint of bronze over a lightly brushed surface to highlight the grain, that is then carefully picked out with a gently contrasting clay tone to create a stunning multidimensional floor with a vintage look and a modern feel.

Type	Width
Solid	105 / 150 / 200
Strata	150 / 200 / 300
Overlay	135





Guildhall Oak



### Trinity Oak

A clever combination of subtle black and brown shades with a gentle surface texture gives this floor an intense yet naturally worn look and feel that could easily be mistaken for original boards and forgives a myriad of sins in terms of wear and tear.

Type	Width
Solid	105 / 150 / 200
Strata	150 / 200 / 300
Overlay	135



### Guildhall Oak

Warm, familiar, versatile – these are most common reactions we have to this floor. A refreshing take on the vintage look its gently enriched tones and slight surface texture create a subtle character and sense of place.

Type	Width
Solid	105 / 150 / 200
Strata	150 / 200 / 300
Overlay	135



### Glamorgan Oak

The surface of this floor is lightly brushed, then carefully coloured to resemble polished mahogany before it is gently aged to create an authentic worn look that often leads people to think it is a reclaimed board whose surface has evolved over several decades.

Type	Width
Solid	105 / 150 / 200
Strata	150 / 200 / 300
Overlay	135





### Trafalgar Oak

Richly toned with a slight surface texture to accentuate the grain, this beautiful floor creates an inherent sense of grandeur and history. It blends seamlessly into traditional interiors and is an excellent choice for more modern properties to add character and balance.

Type	Width
Solid	105 / 150 / 200
Strata	150 / 200 / 300
Overlay	135



### Greenwich Oak

In the spirit of bare oak, never sealed and well worn, these boards offer a tantalising mix of muted greys and gentle golden tones and produce a pretty, less intense vintage floor that works wonderfully with rustic contemporary styling.

Type	Width
Solid	105 / 150 / 200
Strata	150 / 200 / 300
Overlay	135



### Ivy Oak

Originally designed for the renowned restaurant after which it is named, this is a floor full of warm burnished tones with an elegant, antique feel. Versatile and timeless it is as well matched with rich velvets as crisp white linens.

Type	Width
Solid	105 / 150 / 200
Strata	150 / 200 / 300
Overlay	135





Trafalgar Oak

Years ago wood floors were made using rustic machinery that left saw marks across their surface.

Our Old House Collection is characterised by these saw marks, now painstakingly added board by board as our modern machinery leaves them beautifully flat! We also remove the summer wood from their surface, naturally mimicking years of wear to create a rich texture and soft patina.

Old House boards are made as standard on Cottage Oak and are all fully finished. They can also be made on Railway, Elegance or Gallery if you prefer.

# Old House



## Apsley

Taking inspiration from painstakingly soap scrubbed floors of old, Apsley boards are washed with soft pinkish grey, highlighted with a slightly lighter grain, and have a matt satin finish. Pale, pretty and subtle this floor is perfect for light, vintage inspired interiors.

Type	Width
Solid	105 / 150 / 200
Strata	150 / 200 / 300



## Chiswick

Sealed with our unique Nude finish this fabulous bare looking Old House board keeps things wonderfully simple and has a light, modern feel and matt satin look that is perfect for contemporary country interiors.

Type	Width
Solid	105 / 150 / 200
Strata	150 / 200 / 300



## Osbourne

Intense chocolate tones with just a hint of copper and amethyst are the hallmark of this wonderful, traditional looking floor whose matt satin finish ensures that it doesn't absorb too much light and has a rich rather than dark look and feel.

Type	Width
Solid	105 / 150 / 200
Strata	150 / 200 / 300





Apsley



Blakeney



### Chartwell

Evocative of gently roasted coffee beans, this floor is characterised by a gentle spectrum of soft, toasted tones which are subtly highlighted by the distinctive texture of the Old House collection. A perfect contrast to chic contemporary styling with a matt satin finish.

Type	Width
Solid	105 / 150 / 200
Strata	150 / 200 / 300



### Gainsborough

Full of gently faded black and brown tones that create a naturally well worn look you could be forgiven for thinking this floor was already several centuries old. With a matt satin finish that just catches the light it adds a sense of character to any room and is at home anywhere from country house to country pub.

Type	Width
Solid	105 / 150 / 200
Strata	150 / 200 / 300



### Hardwick

Classic and inviting the warm golden tones and matt satin finish of the Hardwick floor show off the fabulous surface texture and patina of the Old House board beautifully and create an attractive, subtly aged variation of the archetypal oak floor.

Type	Width
Solid	105 / 150 / 200
Strata	150 / 200 / 300





## Clifton

Another modern interpretation of the Old House look with a spa like feel, the creamy tones of our Clifton floor are calm, elegant and relaxed. Team with pretty florals or muted natural shades and textures.

Type	Width
Solid	105 / 150 / 200
Strata	150 / 200 / 300



## Stokesay

It is hard not to feel immediately at home with this floor – against a background of inviting caramel tones the grain is cleverly picked out with sultry grey to create a natural looking, gently worn board which with its matt satin finish is easy to live with and ultimately versatile.

Type	Width
Solid	105 / 150 / 200
Strata	150 / 200 / 300



## Blakeney

The intense smokey greys and soft clay overtones of our Blakeney boards create a rustic vintage look that is right on trend and ideal for either setting off contemporary furnishings or bringing a period interior subtly up to date. These boards have a matt finish.

Type	Width
Solid	105 / 150 / 200
Strata	150 / 200 / 300



With its scalloped undulations and soft patina, driftwood is wonderfully tactile and shows off the grain of the timber to stunning effect. This is the inspiration for our Tempest collection whose boards have their surface naturally eroded by sand in the same way to create a unique and almost sensual surface texture that lends itself brilliantly to the creation of gorgeous multidimensional tones with a distinct and luxurious feel.

Tempest boards are all fully finished and are available on a choice of solid or strata engineered boards. With the exception of Maestro which is created as standard on Elegance, they are all normally created on our Cottage Oak grade.

# Tempest



## Mistral

The first of the Tempest collection that we designed and already causing a stir with its soft oyster tones and pretty chalky coloured grain Mistral is a striking yet subtle floor full of rustic sophistication with a matt satin finish.

Type	Width
Solid	105 / 150 / 200
Strata	150 / 200 / 300



## Etesian

A pretty combination of champagne and natural clay tones with a slightly vintage feel and a matt finish that are right on trend but given its classic versatility we are certain that this floor will become a permanent Broadleaf favourite.

Type	Width
Solid	105 / 150 / 200
Strata	150 / 200 / 300



## Bora

A striking combination of dramatic grey and bronze tones contrasted with a rich ivory grain this is a truly impressive feature floor with a matt satin finish that looks wonderful against simple strong or neutral coloured furnishings.

Type	Width
Solid	105 / 150 / 200
Strata	150 / 200 / 300





Etesian





---

### Calima

Like a handful of warm sand this richly textured floor is an inviting mix of honeyed tones picked out with a lighter grain and a pretty matt satin finish. Calima is a subtle yet distinctive floor that blends beautifully with a wide spectrum of interiors.

Type	Width
Solid	105 / 150 / 200
Strata	150 / 200 / 300



---

### Diablo

Intense chestnut tones, with a subtle wash of gold and matt satin finish that not only adds an indulgent edge and picks out the fabulous grain but also makes the floor dance with life as it catches the light from different directions. Beautiful.

Type	Width
Solid	105 / 150 / 200
Strata	150 / 200 / 300



---

### Maestro

A graceful blend of soft white and gentle cream shades with a subtle matt finish that enhances rather than masks the grain of the timber beneath, Maestro is most definitely a pale and interesting floor.

Type	Width
Solid	105 / 150 / 200
Strata	150 / 200 / 300





## Sirocco

With the enviable depth of texture and colour typically only found on years old air dried beams, these stunning Sirocco boards with their spectrum of earthy tones and subtle matt finish are generally thought to be original face reclaimed boards and most commonly used for restoration work or to add architectural interest to more modern interiors.

Type	Width
Solid	105 / 150 / 200
Strata	150 / 200 / 300



## Solano

Defined by its intense graphite tones, Solano is a distinctive and dramatic floor that is nonetheless sophisticated and versatile. Its exciting texture is shown off by a matt satin finish that catches the light to ensure that it never has a 'dark' feel.

Type	Width
Solid	105 / 150 / 200
Strata	150 / 200 / 300



## Shamal

A complex mix of strong smoky shades over a fabulously textured grain, highlighted with a soft clay tone and a matt satin finish, Shamal is a rustic yet refined floor. A perfect platform for naturally inspired interiors be they modern or classic in style.

Type	Width
Solid	105 / 150 / 200
Strata	150 / 200 / 300



Deep luxurious shades and smooth silky textures are the distinctive stamps of our Metro collection. Whether you are looking to create boutique hotel chic, urban cool or simply a smart, modern feel that stands out from the crowd these floors are sure to make the grade.

All of the floors in our Metro collection are fully finished ready to walk on the day that they are laid and have a hardwearing matt satin finish.

# Metro



## Porcelain Oak

The milky white tones of our Porcelain Oak with a lightly brushed surface and emphasised grain teams brilliantly with strong brights or other whites for a clean, contemporary feel. Created on our Elegance oak but also available on our extra wide or gallery oak.

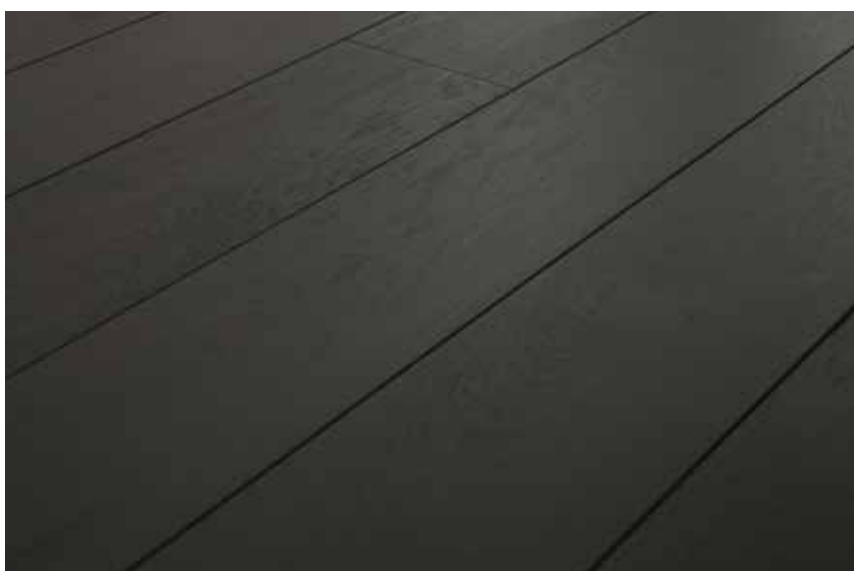
Type	Width
Solid	105 / 150 / 200
Strata	150 / 200 / 300
Overlay	135



## Iced Oak

An extreme white floor with just a hint of grey and a soft opacity that creates a distinct outline between each plank, Iced Oak has an almost painted look and is the ideal platform for an intense multi tonal white scheme. Created on our Elegance oak as standard this floor is also available on our Extra Wide or Gallery Oak.

Type	Width
Solid	105 / 150 / 200
Strata	150 / 200 / 300
Overlay	135



## Midnight Oak

A distinctly black floor that retains a touch of transparency, Midnight Oak is a great way to bring a period interior right up to date as well as to add drama and sophistication to a contemporary space. Fully finished it is created as standard on our Cottage Oak but is also available on any of the Classic collection floors.

Type	Width
Solid	105 / 150 / 200
Strata	150 / 200 / 300
Overlay	135





### Raven Oak

A stunning multifaceted shade of black, our Raven Oak also benefits from a slight surface texture that picks out the grain of the timber beneath for additional depth and interest. Fully finished it is created on our Cottage oak as standard and is also available on any of the floors from our Classic collection.

Type	Width
Solid	105 / 150 / 200
Strata	150 / 200 / 300
Overlay	135



### Urban Grey

A sleek, slate grey floor whose bold tones are cleverly enhanced by the grain of the timber to catch the light at every turn creating life and interest. Team with lighter grey walls and coloured textiles for ultimate urban elegance. Made on our Elegance Oak as standard.

Type	Width
Solid	105 / 150 / 200
Strata	150 / 200 / 300
Overlay	135



### Sepia Fired

“It’s the colour of cinnamon” was how the youngest member of the Broadleaf team (aged 10) described our Sepia Fired floor; which when we thought about it seemed to say it all – except that it has a stylish modern feel, a matt satin finish and is made on our Elegance grade oak.

Type	Width
Solid	105 / 150 / 200
Strata	150 / 200 / 300
Overlay	135





Raven Oak



Sienna Fired



## Terra Fired

The epitome of New England chic, the rich mahogany tones of our Terra Fired Oak are the perfect platform for modern classic interiors. Made on our Elegance oak with a hardwearing matt satin finish it has a luxurious, engaging feel.

Type	Width
Solid	105 / 150 / 200
Strata	150 / 200 / 300
Overlay	135



## Sienna Fired

The gentle golden brown shades of our Sepia Oak with their matt satin finish have an almost burnished feel and marry beautifully with the range of modern décor from sleek minimalism to the comfortable chic. Made on our Elegance oak it features some colour variation and small knots.

Type	Width
Solid	105 / 150 / 200
Strata	150 / 200 / 300
Overlay	135



### Need samples?

Collect them from your nearest showroom (see back cover for details) or get in touch and we'll post you up to 3 FOC.

There is something instantly relaxing about our beautiful Coastal and Country collection. From the complex but subtle shades of Quayside to the simple but stunning Sunbleached it is all about gentle rusticity, muted tones and soft textures combined to create calm, restful floors that will blend effortlessly into naturally inspired interiors and with other natural materials.

All of the floors in this collection are fully finished in Matt Satin unless otherwise stated and available on a choice of traditional solid and Strata boards.

# Coastal & Country



### Seaside Grey

A delicate mix of pretty oyster and soft sandy shades with just a hint of white in the grain this floor couldn't really be called anything other than Seaside Grey. Made on our Cottage grade oak it has a gently rustic feel and a subtle matt finish.

Type	Width
Solid	105 / 150 / 200
Strata	150 / 200 / 300
Overlay	135



### Cloudy Grey

Almost silky looking with its gentle surface patina, spectrum of sultry tones and slightly milky grain, this is a quietly luxurious floor with just a hint of rusticity ideal for a country feel. Made on Elegance Oak as standard it is also available on Gallery Oak or Extra Wide if you prefer and has a Matt finish.

Type	Width
Solid	105 / 150 / 200
Strata	150 / 200 / 300
Overlay	135



### Weathered Grey

Our Weathered Grey floor combines warm honeyed tones with a slightly raised texture and soft grey grain to create a pretty, gently worn looking floor that is ideally suited to gently rustic coastal and country interiors of all styles. Made on Cottage Oak as standard it is also available on any of the floors from our Classic collection and has a Matt finish.

Type	Width
Solid	105 / 150 / 200
Strata	150 / 200 / 300
Overlay	135





### Washed Grey

The colour of old seaside decking, these pretty Washed Grey boards with a just hint of sea blue and a slight surface texture create a subtly rustic floor with a calm, relaxed mood. Made on Cottage Oak as standard it is also available on any of the floors from our Classic collection.

Type	Width
Solid	105 / 150 / 200
Strata	150 / 200 / 300
Overlay	135



### Shingle Grey

Our new Shingle Grey is a fabulous medley of the wonderful mineral greys you find on the best pebble beaches. Gently rustic in style with an easy care matt satin finish its gentle colours combine to create a pretty, versatile floor that would suit any relaxed interior.

Type	Width
Solid	105 / 150 / 200
Strata	150 / 200 / 300
Overlay	135



### Sunbleached

The soft creamy tones of our Sunbleached boards have the delicate, semi translucent look of well loved old linen and their gently rustic mood is enhanced by a slight surface texture. Made on Elegance Oak as standard it is also available on Gallery Oak or Extra Wide if you prefer.

Type	Width
Solid	105 / 150 / 200
Strata	150 / 200 / 300
Overlay	135





Washed Grey




---

### Limed and Washed

A more subtle variation of our classic Brushed & Limed Oak the limed grain of this floor is washed with a subtle white to create a softer looking, less dramatic floor that adapts to a wide range of styles. Made on Elegance Oak as standard it is also available on Gallery Oak or Extra Wide if you prefer.

Type	Width
Solid	105 / 150 / 200
Strata	150 / 200 / 300
Overlay	135




---

### Breakwater

Softly textured under a blend of dark earthy shades that are inherently sophisticated and whose pale clay highlights keep it light in feel this floor is an excellent contrast to sleek more contemporary styling. Made on Cottage Oak as standard it is also available on any of the floors from our Classic collection and has a Matt finish.

Type	Width
Solid	105 / 150 / 200
Strata	150 / 200 / 300
Overlay	135





## Quayside

Rustic yet sophisticated our Quayside Oak is a complex mix of natural shades, a rich texture and a soft creamy overtone that creates a stunning pale floor that still has plenty of character and depth. Made on Cottage Oak as standard it is also available on any of the floors from our Classic collection and has a Matt finish.

Type	Width
Solid	105 / 150 / 200
Strata	150 / 200 / 300
Overlay	135



## Oyster Light

Like a handful of sand as you run it through your fingers each board of our Oyster Oak contains a myriad of muted shades but overall it has a gentle, multi dimensional tone through its softly textured surface whose classic versatility makes it a definite designer favourite. Made on Cottage Oak as standard it is also available on any of the floors from our Classic collection

Type	Width
Solid	105 / 150 / 200
Strata	150 / 200 / 300
Overlay	135



### Need technical advice?

See pages 82-89 for essential information and our comprehensive floor installation guide.

# Traditional Parquet

Smooth, sleek and effortlessly glamorous, it is not surprising that most of us secretly covet the traditional parquet floor. Maybe it's the sense of luxury, maybe it's the way they catch the light, but we think it's probably the way they show off the sheer beauty of the timber. Beautifully machined and perfectly proportioned our traditional blocks and tramlines can be used to create all of the classic designs – and some original ones.

Now available in block or chevron options our traditional parquet will need to be filled, sanded and sealed after fitting. Please note that blocks do not have a microbevel but chevrons do.



### Cottage Oak Blocks

Ideal for creating a more rustic style traditional parquet floor, these blocks create a spectrum of warm natural colour variation and smaller knots. They look particularly good finished with Aged Broadleaf Hardwax Oil.

Type	Dimensions
Solid Blocks	70 x 280 / 90 x 600
Solid Chevrons	90 x 510



### Elegance Oak Blocks

The perfect choice for a more informal parquet floor featuring natural oak tones and a peppering of small knots to add warmth and character and create a more relaxed feel.

Type	Dimensions
Solid Blocks	70 x 280 / 90 x 600
Solid Chevrons	90 x 510



### Gallery Oak Blocks

Choose the silky golden tones of our Gallery blocks for an archetypal parquet floor and edge with contrasting tramlines for a really sophisticated look.

Type	Dimensions
Solid Blocks	70 x 280 / 90 x 600
Solid Chevrons	90 x 510



# Original Vintage Parquet

Our original vintage blocks have long been one of our best selling floors. Loved for their informal elegance and subtle authenticity they feature softly worn edges and a gently distressed patina, and are now available in a chevron option as well as a classic block in all of the oak choices.

Made on Cottage grade oak, with the exception of Silvered and Smoked which are made on Elegance, all Original Vintage Parquet is supplied semi finished to be top coated after fitting with 2 coats of Broadleaf Hardwax Oil.



### Silvered Oak

The subtle silvery tones of our Silvered Vintage Parquet are instantly evocative of period Parisian chic and create an elegant, timeless floor with a light, calm feel that never feels dated. Topcoat with Light Broadleaf Hardwax Oil.

Type	Width
Solid Blocks	70 x 280 / 90 x 600
Solid Chevrons	90 x 510



### Nude Oak

A wash of our unique Nude Hardwax Oil leaves this beautiful slightly distressed parquet with nothing more than the untouched, slightly rustic look of bare timber and adds a pretty, modern look to this classic style floor. Topcoat with Nude Broadleaf Hardwax Oil.

Type	Width
Solid Blocks	70 x 280 / 90 x 600
Solid Chevrons	90 x 510



### Smoked Oak

Intrinsically elegant and wonderfully versatile Smoked Oak Vintage Parquet contains a spectrum of burnished tones evocative of mixed spices that adapts to most styles of interior. Topcoat with Classic Broadleaf Hardwax Oil.

Type	Width
Solid Blocks	70 x 280 / 90 x 600
Solid Chevrons	90 x 510





### Rich Oak

With its soft texture and warm, luxurious tones Rich Vintage Oak Parquet is the perfect way to create an inviting space whatever the size or style of your room. Topcoat with Classic Broadleaf Hardwax Oil.

Type	Width
Solid Blocks	70 x 280 / 90 x 600
Solid Chevrons	90 x 510



### Aged Oak

With a wash of our exclusive Ageing Oil to bring out its grain, Aged Oak Vintage Parquet brings an immediate sense of character to even the newest interior and fits effortlessly into any period room. Topcoat with Classic Broadleaf Hardwax Oil.

Type	Width
Solid Blocks	70 x 280 / 90 x 600
Solid Chevrons	90 x 510



### Worn Oak

Elegant and luxurious, the deep grey tones of our Worn Vintage Oak Parquet with just a hint of the golden oak tones beneath create a sophisticated floor that is inherently vintage in style, modern in feel and brilliantly versatile. Topcoat with Classic Broadleaf Hardwax Oil.

Type	Width
Solid Blocks	70 x 280 / 90 x 600
Solid Chevrons	90 x 510





Worn Oak



Classic Oak



## Dark Oak

Dark in tone but light and sophisticated in feel, Dark Oak Vintage Parquet is a stunning backdrop for traditional and modern interiors alike. Topcoat with Classic Broadleaf Hardwax Oil.

Type	Width
Solid Blocks	70 x 280 / 90 x 600
Solid Chevrons	90 x 510



## Classic Oak

A perennial favourite, truly reminiscent of famous old floors across the globe and at home almost anywhere the natural oak tones of our Classic Vintage Parquet are supremely adaptable and ultimately authentic. Topcoat with Classic Broadleaf Hardwax Oil.

Type	Width
Solid Blocks	70 x 280 / 90 x 600
Solid Chevrons	90 x 510



## Merbau

Rich and inviting the deep auburn tones of these blocks are sophisticated but informal and are ideal for a slightly colonial or metro feel. Topcoat with Classic Broadleaf Hardwax Oil.

Type	Width
Solid Blocks	70 x 230



# Pullman Vintage Parquet

Our Pullman Vintage Parquet collection began with a bespoke designer floor created for the stunning Pullman Hotel in St Pancras.

An evolution of our Original Vintage Parquet it features softly worn edges, a lightly textured surface and a gently distressed patina, all enhanced by sophisticated multi tonal shades.

Pullman Vintage Parquet is now available in both block and chevron options, all of which are created on our Cottage grade and semi finished to be top coated after fitting with 2 coats of Light Broadleaf Hardwax Oil



### Santa Lucia

Pale and interesting is the perfect description of this pretty silver grey floor, whose white highlights create a modern vintage look with a classic feel that adapts easily to a wide range of interiors.

Type	Width
Solid	70 x 280 / 90 x 600
Solid Chevrons	90 x 510



### St Pancras

The original Pullman's, St Pancras combines polished nut brown background tones with subtle cream to create an inherently luxurious and inviting floor which blends seamlessly with period architecture and classic contemporary styling.

Type	Width
Solid	70 x 280 / 90 x 600
Solid Chevrons	90 x 510



### Gare Du Nord

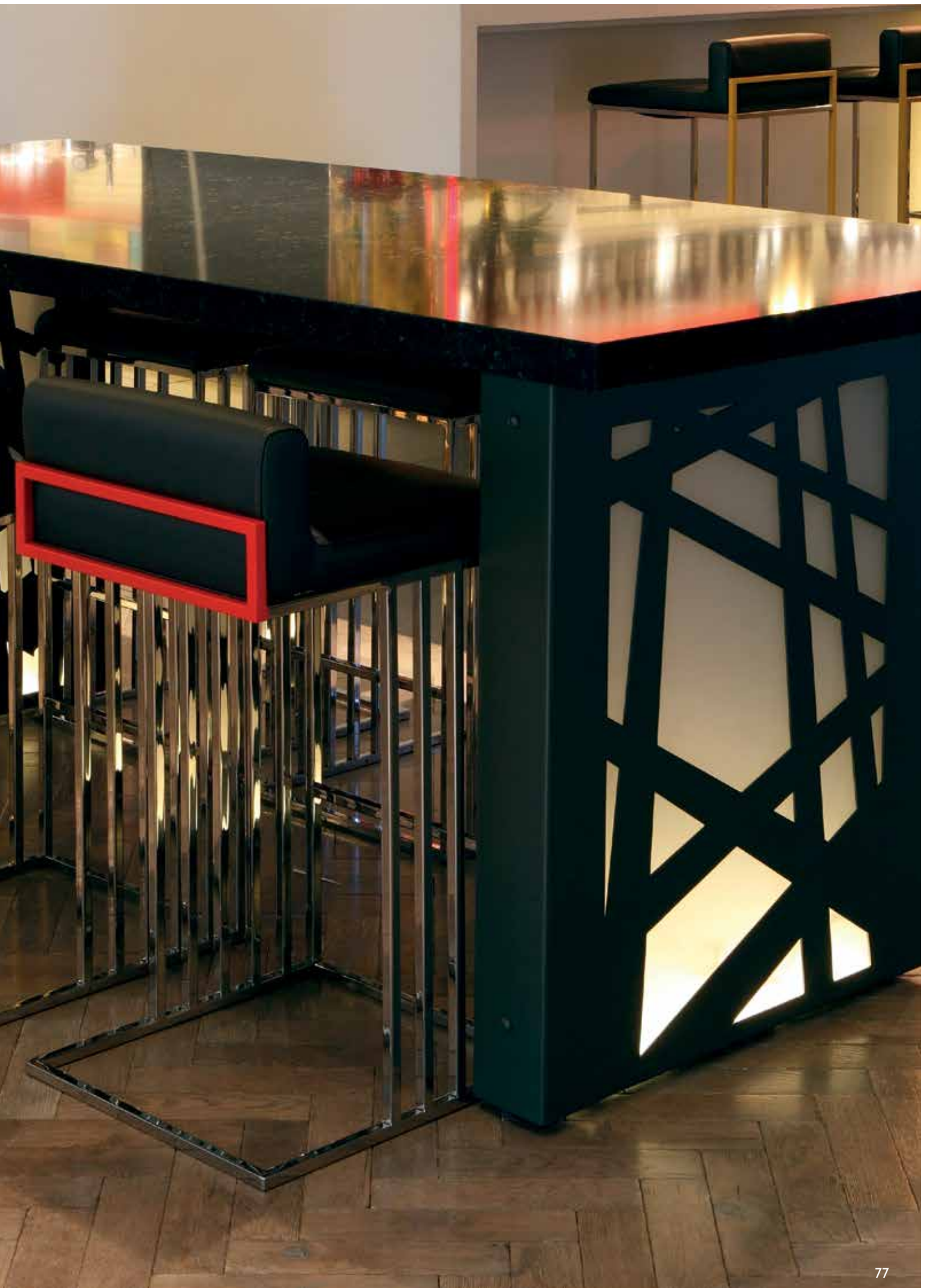
In the Beaux Arts tradition of its namesake, the deep tones and dramatic feel of this floor are unashamedly grand in aspiration and very much designed to live up to the most elegant architectural style.

Type	Width
Solid	70 x 280 / 90 x 600
Solid Chevrons	90 x 510





St Pancras





### Connolly

Pretty and subtle with a delicate, slightly aged feel that is instantly familiar; this is probably the most versatile floor in our Pullman collection and would be at home in almost any room. Ideal for classic period or country style.

Type	Width
Solid	70 x 280 / 90 x 600
Solid Chevrons	90 x 510



### Chamartin

We think that there is something almost flirtatious about this fabulous finish with its glamorous mix of champagne, silver and just a little bit of glitz when it catches the light. Put them anywhere – who needs an excuse!

Type	Width
Solid	70 x 280 / 90 x 600
Solid Chevrons	90 x 510



### Waverley

When we imagined a floor in the tones of naturally weathered oak, this is what we saw – a multi dimensional spectrum of soft grey tones that still retain just a touch of their original golden hue. Modern ? Vintage ? We're not sure but we love it.

Type	Width
Solid	70 x 280 / 90 x 600
Solid Chevrons	90 x 510





## Lichtenberg

Sultry and opulent, the intense tones of our Lichtenberg parquet create a certain gravitas that marries beautifully with period architecture or but can also be used to excellent effect in modern spaces as an architectural feature in its own right.

Type	Width
Solid	70 x 280 / 90 x 600
Solid Chevrons	90 x 510



## Montparnasse

The rich butterscotch tones of our Montparnasse parquet have a definite touch of sunshine about them, sure to raise a smile on even the most dreary day. A great floor to add warmth to north facing rooms or those a bit short of natural light.

Type	Width
Solid	70 x 280 / 90 x 600
Solid Chevrons	90 x 510



## Bergen

A myriad of soft earthy tones evocative of old oak weathered by the elements over time, this pretty parquet floor has a rustic contemporary look that teams beautifully with most styles but particularly with industrial, natural or other slightly rustic schemes.

Type	Width
Solid	70 x 280 / 90 x 600
Solid Chevrons	90 x 510



## Real Wood, Great Design, Excellent Quality

Durable, luxurious and with an almost infinite scope for aesthetic choice, quality wood floors are an increasingly popular choice for commercial interiors.

Here at Broadleaf we have extensive experience in this area and all of our flooring products, are suitable for commercial use. Our client base covers the spectrum of hospitality, leisure and retail industries, from small independents to large multinationals, and our team are experts in their field.

We are used to working with designers, architects, developers, contractors as well as their clients to find just the right solution for a project and deliver it on time, on budget and in line with expectations.

For more information or to discuss a project, contact our commercial team direct on 01269 851 910 or [commercial@broadleaftimber.com](mailto:commercial@broadleaftimber.com), or speak to any of showrooms.

Our Services include:

Free sampling

Design advice and bespoke finishes

Guidance on slip resistance and commercial performance

Detailed product specifications

Sustainable sourcing including ancillaries

Guidance on cleaning and maintenance

# Commercial



Fortnum's Fountain  
Restaurant

# Floors

## Essential Information

### Can I fit a wooden floor anywhere?

Most of our floors can be used in any room as long as it is free of damp and all plaster and concrete are fully dry (see below for further details). The exceptions are bathrooms and other areas of high humidity where solid boards over 150mm wide are not recommended.

### Can I fit a wooden floor over underfloor heating?

Most of our floors can be successfully installed over underfloor heating. Suitable products are marked **U** in the brochure and shown in the flooring selector on page 98. Some products will require re-kilning and careful attention should be paid to the advice in our installation guide.

### How is a wooden floor fitted?

Except for our Strata and Basics boards, which can be floated, all floors in the Broadleaf range must be nailed or glued to the subfloor (the underlying floor structure). Which method is recommended will depend on the product you choose and the type of subfloor you have. Details are given in our flooring selector and further information on the fixing methods can be found in our installation guide.

### Who should fit my floor?

The quality of installation of your floor will be integral to the end result. In the absence of complicated site conditions, most of our floors are designed to be accessible to a competent amateur assuming that they have the correct tools and follow the installation guide closely. Generally however, we would suggest that you use an experienced professional and particularly if you are considering a parquet floor or have a less than perfect site. Please ask our staff for advice if you are in doubt.

### Will a wooden floor be thicker than a carpet?

Generally a bit, yes, although to what extent will depend upon the product that you choose and the fitting method used to install it. Any height difference between rooms can usually be simply and discreetly accommodated with an appropriate threshold and a small adjustment to the door.

### How much flooring do I need?

You will need enough flooring to cover the floor area of the room plus wastage. Recommended wastage allowances are detailed in our flooring selector.

### Will my floor move?

Some movement in response to seasonal and atmospheric changes is characteristic of a real wood floor and part of its beauty. Wood is a hygroscopic material which is sensitive to changes in temperature and humidity. It is quite normal to see small gaps between planks and blocks that vary over time.

### Can my floor be fitted the day it is delivered?

No. It will need to be acclimatised for 7-14 days in order to adjust to the particular atmospheric conditions of your home prior to fitting. Please see the 'Before installation' section for further details.

### Does a wooden floor need a lot of maintenance?

Quite simply, no. Modern finishing products are designed for modern living. A simple regime of vacuum and damp mop, plus a quick application of a maintenance wax or equivalent from time to time is all that is generally required. For guidance on keeping your floor in tip top condition see our aftercare guide.

### Before Ordering

Check that your chosen floor is suitable for its intended location and identify a suitable method of installation. Use the flooring

selector on page 98 or ask our staff for guidance.

Make sure that at least the recommended wastage allowance has been added to the required area of flooring (detailed in the flooring selector on page 98).

Make sure our staff are aware of how your floor will be fixed so that they can advise on suitable fixing and finishing products.

Make sure that any room into which wood flooring is to be installed is free from damp. Beware of seasonal damp and ensure that a damp proof membrane or other method of preventing rising damp is present in ground floor rooms. If in doubt, consult a professional before having your floor installed.

Make sure that any new concrete or plaster is, or will be, fully dry as defined in our installation guide and that the heating has been run as instructed in our installation guide prior to delivery of the floor.

Make sure that unless you are using a Broadleaf recommended fitter, whoever is installing your floor has read our installation guide and that they contact us with any queries as we cannot take responsibility for products installed outside our recommendations.

Discuss the installation with your fitter and make sure that you understand how your particular installation will work and are happy with this. Make sure that your fitter is aware of any preferences you have about the way the floor is laid – direction, arrangement of mixed width boards, colour variation etc – before they start.

Check that your fitter is happy that your subfloor meets the requirements of our installation guide and is suitable for the fixing method for your floor. If not, preparation work may be necessary to resolve this prior to installation or you may need to adapt your product choice.

If you are intending to install a Broadleaf floor over underfloor heating, please make sure that you have read Section 6 of our installation guide and that you notify

sales staff before you order so that they can advise you accordingly. Please also make sure that you have notified your underfloor heating supplier so that they can adjust your system appropriately. Bear in mind that the surface temperature under your Broadleaf floor must never exceed 27°C.

### Before Installation

Make sure that your flooring is delivered into a room with normal living conditions – that is sealed, dry and heated, with a room temperature of between 15-24°C and relative humidity of between 40-65%.

Check your order carefully on delivery and advise us immediately of any query.

Acclimatise all flooring products for 7-14 days before installation.

This requires them to be kept in the room where they will be fitted, or a nearby room with similar environmental conditions, unwrapped and lattice stacked (criss cross) so that the air can circulate.

Make sure that the room to be fitted is completely clear of furniture when the fitter arrives, unless you have made alternative arrangements with them directly.

If you have underfloor heating, ensure that this is set as per our installation guide – Section 6.

### After Installation

Ensure that any finish applied in situ is left to cure completely as per manufacturers' guidelines before reinstating furniture and using the room. Follow our aftercare guide to keep your floor and its finish in good condition.

If you have underfloor heating, follow the instructions in the installation guide to return this to normal running temperature after fitting and make sure that any future changes in temperature are gradual.

Maintain temperature and humidity in the house within the following normal ranges:

Temperature: 15-24°C  
Relative Humidity – 40-65%

# Floors Installation Guide

To ensure a wooden floor is successful, it needs to be correctly fitted into a suitable environment. The following guidance must be followed when installing a Broadleaf floor and should be read carefully by whoever is going to install it. It is intended to be general guidance however and specific queries should be directed to our technical team.

It is not intended to be applied to non Broadleaf products. If you are not the end user of the floor, please make sure that whoever is has been made aware of the installation choices relevant to their particular product selection, and any issues that may apply to their site.

## I Site Preparation

Careful site preparation is key to avoiding problems with wooden floors after installation. Please check the following before flooring is delivered:

### Environment

Flooring should only be installed into normal living conditions; that is sealed, dry, free from damp, heated and within the following scope:

Temperature – 15-24°C

Relative Humidity – 40-65%

### Damp

A wood floor should not be installed anywhere that suffers from damp. We advise the following checks to rule out obvious causes but please bear in mind that damp is seasonal and may not be evident at the time of inspection. An expert should be consulted if you have any concerns and all issues resolved before the floor is delivered.

Make sure that solid ground floor subfloors have a damp proof membrane. If there is not, do not proceed with installation until this is rectified.

Check that air bricks below suspended floors have not been removed or blocked up and that air circulation is sufficient to prevent moisture build up and that existing joists show no signs of moisture damage.

Make sure that drains next to the house are free of leaves and debris so that they do not block and cause water build up against walls or under a suspended floor.

Check that walls do not show signs of water ingress or damp.

Check the relative humidity of the room. Readings outside the normal range for a heated environment could indicate the presence of damp.

Note: If a sub-floor is sealed with a paint on damp proofing product you should not breach this and should check that any adhesive you plan to use is compatible with it.

### Plaster

All plastering in and near the room where a floor is to be fitted must be complete and fully dry before the flooring is delivered.

This will require at least 2 weeks from change of colour, which is generally about 2 weeks from application of plaster to plasterboard, and 4 weeks from plaster to render. Damp weather and other environmental conditions can extend this.

### Pipes

Underfloor pipes (excluding underfloor heating which is dealt with separately) should be properly insulated to prevent hotspots and localised shrinkage. Although it is not always practical to deal with this retrospectively,

check the floor with the heating on to identify any unusually warm areas. Resolve these by lagging pipes where these are accessible. Be aware that otherwise some localised shrinkage of boards may occur after fitting. This will normally only be an aesthetic issue and is unlikely to affect the structural integrity of the floor.

### Subfloors

The condition of the subfloor is integral to the stability and performance of the finished floor. As a general rule, all subfloors should be dry, level and free from dust.

Concrete subfloors must contain a damp proof membrane and have a moisture content of no more than 4% (by weight) as measured with a Tramex concrete encounter meter. These meters should not be confused with a standard damp meter; they are specialist meters and can be borrowed from Broadleaf showrooms.

Generally, existing screeds should meet this criteria unless they are damp. New concrete up to 50mm thick will normally take approximately 1 month per inch (1 day per mm) to reach it. Thicker screeds can take longer.

A good preliminary test is to fix a small area of plastic sheet to the surface of the concrete with airtight tape. After a couple of

days, check the underside of the sheet. If there is no condensation present, then it is likely that the 4% level has been reached but always check with a meter before proceeding to installation.

If you are going to glue fix flooring directly to a screed or float Strata over it, it must be level to within 3mm across 2 metres. Check this at survey stage, and resolve any more significant imperfections with self levelling compound or ply prior to delivery of the timber.

Before glue fixing, we also recommend the application of a primer to aid bonding and offer an additional moisture barrier. This must be compatible with the recommended adhesive.

To nail fix flooring above concrete, you will first need to install softwood battens. These must be dry (request them as such from builders' merchants) and a minimum of 20mm x 50mm. They must be screw fixed at a maximum of 400mm centres at 90° to the intended direction of the floor. Insulation can be added between the battens if desired. Battens should be packed as necessary to ensure that the surface is level.

Timber subfloors should be structural flooring grade plywood or chipboard (T&G) or existing floorboards. Plank flooring can be nail fixed directly to chipboard/plywood in whichever direction is preferred. For added stability and sound insulation we recommend using glue as a supplement to the nails, applied in strips every 300mm. Strata boards can be floated over this style of timber subfloor and parquet can be glued.

In the case of existing floorboards, these must be dry, reasonably level and firmly fixed. If they are not reasonably level we recommend that they are removed and product permitting the new floor is fixed directly to joists (see below).

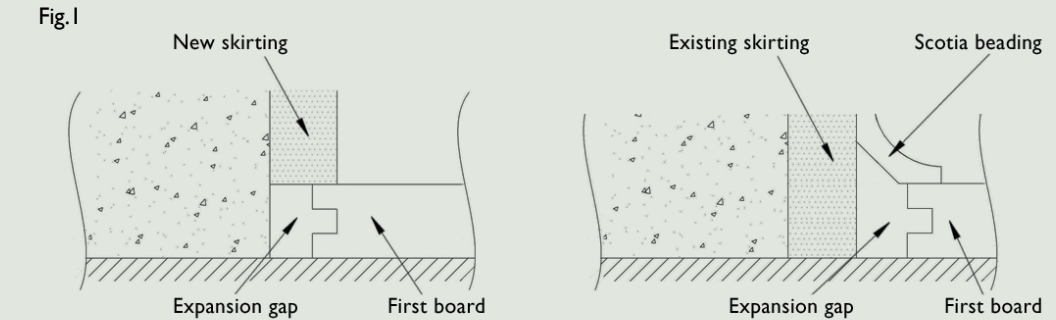
If they are reasonably level and are on the ground floor, check that air bricks are present and clear and that there is no moisture build up beneath the existing boards. Bear in mind that this must be the case all year round. Sound, rot free joists are a good indicator that this is the case. Cupping in the surface of the existing boards could highlight a problem. If there are moisture issues, do not proceed with the installation until these have been resolved.

All being well, screw down any loose boards – check beneath them for services first – punch back any face nails to just below the surface of the boards and sand out any significant high points.

Plank floors can then be nail fixed over the existing floor at 90°, eliminating the issue of any residual unevenness in the surface of the old boards.

If you want to fix the new floor in the same direction as the old floor, you will need to overlay this with flooring grade plywood or chipboard at least 18mm thick, and then fix to this as noted above. Again, in this instance it may be easier simply to remove the existing boards and fix the new floor directly to the joists.

Joists need to be structurally sound dry and rot free, relatively level and at no more than 400mm centres. For ground floor installations the space beneath them must be free of moisture and you must be



confident that this is the case all year round. Always check that air bricks are present and have not been blocked up, there is no moisture in the space beneath the joists, and the joists themselves are sound and rot free. If you are in any doubt, consult a damp expert before proceeding with the installation.

Lay the floor at 90° to the joists, packing where necessary to ensure that the floor is level.

Tiled or stone floors are not recommended as subfloors. Ideally, these floor coverings should be removed and any wood floor fixed directly over the concrete subfloor beneath once this meets the required criteria. If this is not possible, or practical, then a suitable damp proof membrane must be installed over the tiles/stone followed by tongue and grooved plywood (18mm min). The flooring can then be fixed over this as recommended for the product. Remember that any nail fixing will need to remain within the thickness of the ply.

### Heating

Once any new concrete has reached the required moisture level and plaster is fully dry, the heating must then be run to drive out any latent moisture before the flooring is delivered. Conventional heating should be run for a minimum of 2 weeks (even in summer). For underfloor heating recommendations see Section 6.

### Acclimatisation

All Broadleaf flooring products must be acclimatised for 7-14 days before installation. They should not be delivered to acclimatise until all concrete and plaster are fully dry

(see section 1) and the heating has been run for a minimum of 2 weeks after this (see above).

Keep them in the room where they will be fitted, or one with similar environmental conditions, unwrapped and lattice stacked (criss cross) so that the air can circulate. In particularly dry or damp weather, or if using wide boards, err towards the upper end of the recommended acclimatisation period.

## 2 Fixing Issues

### Board Direction

Conventionally, and to show them off to their best advantage, boards are laid towards the primary natural light source and along the length of the room. Consider this along with any subfloor restrictions, the shape of the room and individual preference before installation.

### Board Selection

When fitting a product that features significant variation, be it colour, length of board or grain, board selection has a significant influence on the overall look of the floor. It is important to be sensitive to this and distribute any variation evenly to achieve a natural looking floor. The best way to do this is to spread the boards out prior to installation.

### First Line

The first row of flooring sets the line for the whole floor. If necessary, cut the boards in the first row along the length to compensate for off square walls. If glue fixing, make sure that the first row is stable before pushing against it.

### End Joints

End joints in adjacent rows of planks must be staggered at least 150mm apart and we recommend a minimum 250-300mm. For the best aesthetic result, keep the position of end joints reasonably random by cutting different lengths of board to start rows.

### Gaps

There will almost always be some slight gaps (1mm or so) between boards as you fit an acclimatised solid plank floor. Do not clamp boards to try and remove these as this can cause expansion problems later on. Occasionally a board placed for fitting will create a bigger than normal gap due to minimal machining variations or uneven acclimatisation. Cut it in half and use it to start or finish a row.

### Expansion Gap

To accommodate natural expansion and contraction in the flooring a 15mm expansion gap is required around the entire perimeter of the room; this includes doorways, fireplaces, and any other 'obstacles' adjacent to the floor. Pay particular attention to door liners & plinth blocks which must either be cut to create an expansion gap under them, or have one left around them. For floors in excess of 6m wide, additional expansion of approx 1mm (penny gap) per metre width will need to be integrated evenly across the floor.

To create an expansion gap, insert wedges between the edge of the floor and the wall during fitting. Once fitting is complete, remove them and cover or fill the gap. To create expansion across the floor, insert a thin separator between boards as you knock them

together (approx every third board for wide boards and every fifth board for narrow ones).

To cover the expansion gap either fit new skirting or use beading onto existing skirting (fig 1). When butting up against thresholds, fireplaces, quarry tiles, brick or staircases fill the gap with cork strip for a neat finish.

### Floor Levels & Thresholds

To maintain the expansion gap a threshold must always be left at doorways. Where there is no change in floor level between rooms, use either a T bar, leaving half the expansion gap either side of the fixing strip, or a cut a level threshold board and fit cork strip on either side.

Where the floor levels differ between rooms, use an adjusting threshold to simply accommodate the variation. We have standard adjusting thresholds for variations of up to 15mm and can make them to measure for larger differences or to match the timber of the flooring. Standard thresholds should be fixed as fig 2 leaving the expansion gap underneath. Made to measure thresholds up to 15mm should be fixed as fig 3 with a cork strip either side to maintain the expansion gap. Thicker thresholds can be stepped with the expansion gap beneath as in fig 4 or square with a cork strip as in fig 5.

### Matwells

To protect against dirt and grit brought in from outside, we recommend that matwells are fitted into floors at any regularly used entry doors. We can supply coir matting for these that can be cut to size and replaced as it wears. Matwells look most attractive set forward slightly (say 100mm) from the doorway and 'framed' with edging strips to match or contrast with the flooring according to taste. These can be cut from the flooring or ordered separately and should always be well fixed.

Fig.2

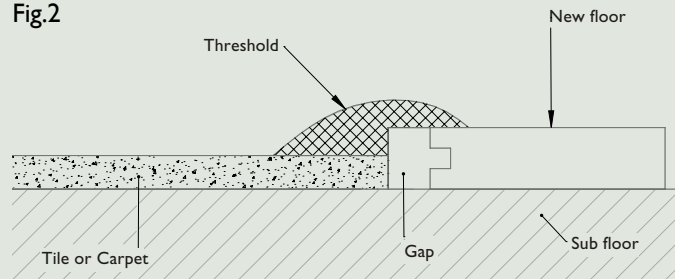


Fig.3

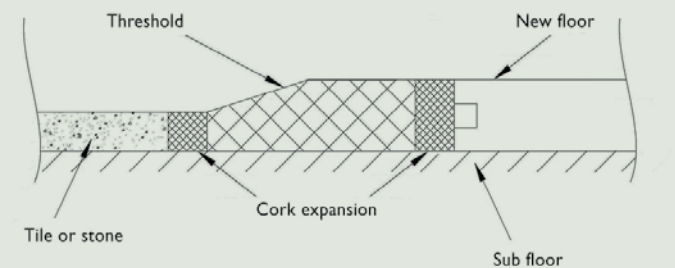


Fig.4

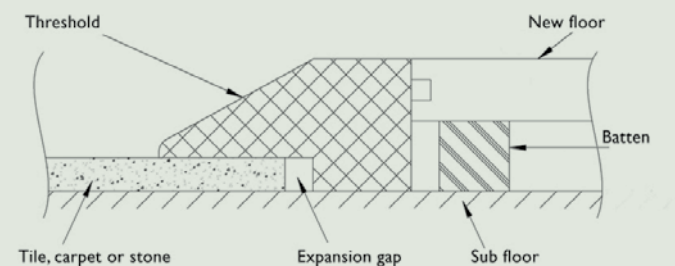
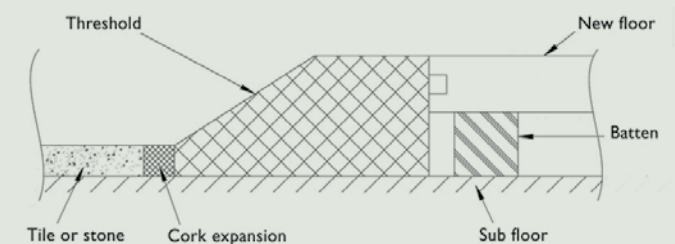


Fig.5



### 3 Plank Fixing Methods

(Note: We recommend that parquet flooring is only installed by an experienced professional. Please contact our technical team with any specific queries) Suitable plank fixing methods will depend on both the product selected and the subfloor to which it is being fixed. See the flooring selector for guidance.

#### Floating

This involves laying the floor over the subfloor rather than fixing to it and should only be used for laying our Strata boards over a structural subfloor.

To do this, first lay fibreboard underlay over the subfloor. Then fit the acclimatised boards together over this, gluing the tongue & groove joints with Bonakemi Gluclid and using a rubber mallet with an offset of the flooring as a knocking block to protect the tongues as you knock the boards together. Follow the manufacturer's instructions for the application of the adhesive.

#### Secret Nailing

As the name suggests, this method of nailing is not visible once the floor is installed. Nails are driven at an angle through the tongue of one board and covered by the next.

Do this with a Portanailer gun that clamps boards together at the right tension and protects the tongue from damage as it nails. These are Broadleaf showrooms and good tool hire stores. If you are fixing to a timber subfloor which is less than 25mm thick, and has services or concrete beneath, you will need to use 38mm portanails to avoid exceeding the depth of the subfloor and possibly damaging pipes or wires. Otherwise use standard 50mm portanails.

Fit the acclimatised boards together and nail at every joist/ batten or every 400mm. Use a rubber mallet with an offset of the flooring as a knocking block to protect the tongues as you knock the boards together.

You will not be able to secret nail the first and last board(s) as the wall will block the Portanailer. Face fix these rows using screws and plugs at every joist/batten or every 400mm. On the first and last row do this at the edge of the board nearest the wall. Plug any fixings that are not covered by skirting/ beading with timber plugs set to run with the grain of the board for minimum visibility.

#### Face Fixing

This involves fixing boards through the face and covering the fixings with discreet timber plugs. To face fix drill pilot holes through the face of the boards approx 25mm from each edge, over every other joist/ batten or approx every 800mm. Offset adjacent rows so that adjacent boards do not have adjacent fixings. Countersink screws into the holes and then cover with timber plugs. Fix these using wood glue and bang in firmly with a hammer. Set the grain of the plugs to run with the grain of the board for minimum visibility and cut flush using a sharp chisel.

#### Glue Fixing

Glue fixing involves applying suitable adhesive to the surface of the subfloor and then fixing the flooring to it. Check our flooring selector for recommended adhesives.

Making sure that the groove side of the board is facing the wall, select, cut and fit together the first 3 rows before applying any glue to the floor. Use a rubber mallet with an offset of the flooring as a knocking block to protect the tongues as you knock the boards together.

Apply the adhesive to the subfloor as per the instructions using the recommended comb size to ensure that correct amount is applied. Never apply adhesive to the boards. Leave these rows to bond before continuing to fit the rest of the room. If you get any adhesive on the top face of the boards, wipe it off immediately. Dried adhesive can be chipped/sanded from the surface of unfinished boards, but removing it is likely to damage the surface of pre-sealed ones.

### 4 Sanding

Exactly how much sanding is required will depend on the product and sub-floor. Assuming that you are not compensating for imperfections in the sub-floor, pre-sanded boards should only need a light final sand once fitted. Use a hand held 'orbital' sander or similar with 120 grit paper and sand with the grain of the timber.

Unsanded boards or blocks may need to be filled before sanding. In this case, use a filler that is suitable for gaps of the maximum size that you are filling and apply in line with manufacturers instructions. Broadleaf staff can advise on this if required. Once the filler is dry, sand in two stages: first, use 80 grit paper on a hand held or upright continuous belt sander, then finish with 120 grit on a hand held belt sander or triple disc sander. Additional sanding may be required if there are imperfections in the subfloor.

### 5 Finishing

Unless they are pre-sealed our floors will need finishing in situ. Finishes should be applied in line with manufacturers' instructions, bearing in mind the following:

Always make sure that the floor is clean, dry and free of dust before applying any finish.

Remove dust with a vacuum cleaner rather than a brush to minimise dust in the air.

Always allow a finish to cure fully before moving furniture back in and using the floor as normal.

Do not skimp on recommended drying times between coats or coverage. This can significantly reduce the performance of the finish.

Make sure the room is warm (min 10°C) and well ventilated during application and drying.

In high wear areas, consider a finish that can be locally repaired.

### 6 Underfloor Heating

Despite the concerns expressed by those with less experience in this area, we are confident that with the right preparation and a suitable product our wood flooring can be successfully combined with underfloor heating.

The following advice is the result of considerable experience over many years and covers the system types most commonly used by our clients, but this is an evolving industry so please make your underfloor heating supplier aware of our recommendations and discuss any queries with our technical team.

#### System Temperature

The first and most important step is to make sure your underfloor heating supplier is aware that a wooden floor is to be fitted over their system and that it is designed so that the surface temperature under the boards will not exceed 27°C. We would strongly recommend specifying combined floor/air thermostats to ensure that this is the case. This is not expensive and provides a reassuring back up that overrides the system if for any reason the maximum floor temperature is reached and protects the floor.

#### Product

Make sure that the selected flooring product is marked as suitable for use over underfloor heating in our flooring selector and has been ordered as re-kilned if necessary – this will be marked on your invoice.

#### Site preparation

As with any other installation, the site and subfloor must meet the basic criteria laid out in Section 1.

The heating must then be run for 3 weeks before the timber is delivered, at normal room temperature unless the ambient room temperature is too high to activate the thermostat at this level.

In this case raise the thermostat temperature so that the heating comes on to warm the screed. Although this may cause some discomfort in the summer

months it is vital to ensure the evaporation of latent humidity. At this stage, make sure that the water temperature at the manifold is set to the specified temperature (this is normally 40° - 45°C for wood floors) and that the floor thermostat is set as master with a maximum of 27°C.

Timber should then be acclimatised as normal with the heating set at normal room temperature.

#### **Fixing methods for water systems set in screed**

To secret nail, either battens will need to be set into the screed, or it will need to be overlaid with tongue & grooved 18mm ply. Inset battens will need to be notched to allow the pipe to run across the floor and must sit at least as high as the surface of the screed. If you require further guidance on setting battens into a screed, please contact our technical team.

To glue fix boards, use Broadleaf Ultra adhesive. To glue fix parquet blocks, use Broadleaf Ultra as normal then undercoat and leave with the heating running normally for a period of 3 weeks for any initial settling movement to take place before filling, sanding and finishing as normal.

Strata boards can be floated over fibreboard underlay in this situation as normal.

#### **Fixing methods for dry water systems**

Where a water system is set between joists with conductor plates to transfer the heat, we recommend 18mm tongue and grooved ply be laid over the joists to prevent 'hotspots'. Traditional boards can then be secret nailed or glued to this as normal, Strata boards can be floated and Parquet can be glue fixed as for systems set in screed.

Where a water system is set into a floating timber subfloor, this should be overlaid with 18mm tongue & grooved ply. Boards can be secret nailed with 38mm portanails (always test your nailer on a spare piece of ply before you begin to ensure that the nails do not breach the underside) or

glued with Broadleaf Ultra or. Strata boards can be floated over this and parquet flooring can be fixed as noted for screed systems above.

#### **Electric Systems**

To fit Traditional boards or Parquet over electric underfloor heating systems, first overlay these with 18mm tongue & grooved ply and then glue or nail as for dry water based systems above. Strata boards can also be floated over these systems as normal.

Note: If you are overlaying a system with 18mm ply and this is not part of the standard floor construction recommended by your underfloor heating supplier, you should make them aware of this.

#### **Running the Heating**

The night before your flooring is installed, turn the thermostat down so the heating is not actually warming the surface of the floor and maintain this status while the flooring is fitted.

Once fitting is complete, increase the thermostat temperature by a degree per day until you reach normal running temperature. Thereafter, ensure that temperature changes are gradual.

#### **Additional Advice**

Should you have any specific queries, please contact our technical helpline:

Tel: 01 269 851 987  
[technical@broadleaftimber.com](mailto:technical@broadleaftimber.com)

# Floors Flooring Selector

	Width (mm) where products are available in multiple widths these are compatible	Thickness (mm)	Length (mm) *up to 5% may be shorter	Supplied Presanded ready to finish	Supplied Prefinished ready to walk on after fixing	Supplied Unfinished unsanded and may need filling	Can be Prefinished to order	Can be Brushed to order	Strata Option 100% Oak engineered board	Wastage Guide (%) + 50% if mixing single width products	Can be prepared for UFH subject to installation guidelines	Can be Floated subject to installation guidelines	Can Be Glue Fixed - no UFH subject to installation guidelines	Can be glue fixed over UFH subject to installation guidelines	Can Be Secret Nail Fixed subject to installation guidelines	Also Requires Face Fixing if secret nailed
<b>Classic</b>																
Railway	150/200	20	*1000 - 2400	Y	N	N	Y	Y	Only	5	Y	Y	BLT Ultra	BLT Ultra	Y	N
Cottage/Elegance/ Gallery	105	20	*1000 - 2400	Y	N	N	Y	Y	N	5	Y	N	BLT Ultra	BLT Ultra	Y	N
Cottage/Elegance/ Gallery	150	20	*1000 - 2400	Y	N	N	Y	Y	Y	5	Y	Strata	BLT Ultra	Strata BLT Ultra	Y	N
Cottage/Elegance/ Gallery	200	20	*1000 - 2400	Y	N	N	Y	Y	Y	5	Strata	Strata	BLT Ultra	Strata BLT Ultra	Y	Solid
Cottage/Elegance/ Gallery Overlay	135	16	600 - 2000	Y	N	N	Y	Y	N	5	N	N	BLT Ultra	N	Y	N
Extra Wide	300/400	20	*2000 - 3000	Y	N	N	Y	Y	Only	5	Y	Y	BLT Ultra	BLT Ultra	Y	N
<b>Nuances</b>																
All shades	105	20	*1000 - 2400	N	Y	N	N/A	N	N	5	Y	N	BLT Ultra	BLT Ultra	Y	N
All shades	150	20	*1000 - 2400	N	Y	N	N/A	N	Y	5	Y	Strata	BLT Ultra	Strata BLT Ultra	Y	N
All shades	200	20	*1000 - 2400	N	Y	N	N/A	N	Y	5	Strata	Strata	BLT Ultra	Strata BLT Ultra	Y	Solid
All shades	135	16	600 - 2000	N	Y	N	N/A	N	N	5	N	N	BLT Ultra	N	Y	N
All shades	300	20	*2000 - 3000	N	Y	N	N/A	N	Only	5	Y	Y	BLT Ultra	Strata BLT Ultra	Y	N
All shades	190	15	*1860	N	Y	N	N/A	N	N	5	Y	Y	BLT Ultra	BLT Ultra	N	N
All shades (chevrons)	90	21	510	N	Y	N	N/A	N	N	10-15	Y	N	BLT Ultra	BLT Ultra	N	N
<b>Artisan</b>																
All shades	150	20	*1000 - 2400	N	Y	N	N/A	N	Only	5	Y	Y	BLT Ultra	BLT Ultra	Y	N
All shades	200	20	*1000 - 2400	N	Y	N	N/A	N	Only	5	Y	Y	BLT Ultra	BLT Ultra	Y	N
<b>Brushed &amp; Burned</b>																
Puro (Light, Medium & Dark)	105	20	*1000 - 2400	N	N	N	Y	N	N	5	Y	N	BLT Ultra	BLT Ultra	Y	N
Puro (Light, Medium & Dark)	150	20	*1000 - 2400	N	N	N	Y	N	Y	5	Y	Strata	BLT Ultra	Strata BLT Ultra	Y	N
Puro (Light, Medium & Dark)	200	20	*1000 - 2400	N	N	N	Y	N	Y	5	Strata	Strata	BLT Ultra	Strata BLT Ultra	Y	Solid
Puro (Light, Medium & Dark) Overlay	135	16	*600 - 2000	N	N	N	Y	N	N	5	N	N	BLT Ultra	N	Y	N
Puro (Light, Medium & Dark)	300	20	*2000 - 3000	N	N	N	Y	N	Only	5	Y	Y	BLT Ultra	BLT Ultra	Y	N
All shades (except Puro)	105	20	*1000 - 2400	N	Y	N	N/A	N	N	5	Y	N	BLT Ultra	BLT Ultra	Y	N
All shades (except Puro)	150	20	*1000 - 2400	N	Y	N	N/A	N	Y	5	Y	Strata	BLT Ultra	Strata BLT Ultra	Y	N
All shades (except Puro)	200	20	*1000 - 2400	N	Y	N	N/A	N	Y	5	Strata	Strata	BLT Ultra	Strata BLT Ultra	Y	Solid
All shades (except Puro)	135	16	600 - 2000	N	Y	N	N/A	N	N	5	N	N	BLT Ultra	N	Y	N
All shades (except Puro)	300	20	*2000 - 3000	N	Y	N	N/A	N	Only	5	Y	Y	BLT Ultra	BLT Ultra	Y	N

Please note that from time to time specifications of products may change after publication so please confirm details prior to ordering.

	Width (mm) where products are available in multiple widths these are compatible	Thickness (mm)	Length (mm) *up to 5% may be shorter	Supplied Presanded ready to finish	Supplied Prefinished ready to walk on after fixing	Supplied Unfinished unsanded and may need filling	Can be Prefinished to order	Can be Brushed to order	Strata Option 100% Oak engineered board	Wastage Guide (%) + 50% if mixing single width products	Can be prepared for UFH subject to installation guidelines	Can be Floated subject to installation guidelines	Can Be Glue Fixed - no UFH subject to installation guidelines	Can be glue fixed over UFH subject to installation guidelines	Can Be Secret Nail Fixed subject to installation guidelines	Also Requires Face Fixing if secret nailed
<b>Heritage</b>																
All shades	105	20	*1000 - 2400	N	Y	N	N/A	N	N	5	Y	N	BLT Ultra	BLT Ultra	Y	N
All shades	150	20	*1000 - 2400	N	Y	N	N/A	N	Y	5	Y	Strata	BLT Ultra	Strata BLT Ultra	Y	N
All shades	200	20	*1000 - 2400	N	Y	N	N/A	N	Y	5	Strata	Strata	BLT Ultra	Strata BLT Ultra	Y	Solid
All shades	135	16	600 - 2000	N	Y	N	N/A	N	N	5	N	N	BLT Ultra	N	Y	N
All shades	300	20	*2000 - 3000	N	Y	N	N/A	N	Only	5	Y	Y	BLT Ultra	BLT Ultra	Y	N
<b>Old House</b>																
All shades	150	20	*1000 - 2400	N	Y	N	N/A	N	Only	5	Y	Y	BLT Ultra	BLT Ultra	Y	N
All shades	200	20	*1000 - 2400	N	Y	N	N/A	N	Only	5	Y	Y	BLT Ultra	BLT Ultra	Y	N
All shades	300	20	*2000 - 3000	N	Y	N	N/A	N	Only	5	Y	Y	BLT Ultra	BLT Ultra	Y	N
<b>Tempest</b>																
All shades	105	20	*1000 - 2400	N	Y	N	N/A	N	N	5	Y	N	BLT Ultra	BLT Ultra	Y	N
All shades	150	20	*1000 - 2400	N	Y	N	N/A	N	Y	5	Y	Strata	BLT Ultra	Strata BLT Ultra	Y	N
All shades	200	20	*1000 - 2400	N	Y	N	N/A	N	Y	5	Strata	Strata	BLT Ultra	Strata BLT Ultra	Y	Solid
All shades	300	20	*2000 - 3000	N	Y	N	N/A	N	Only	5	Y	Y	BLT Ultra	BLT Ultra	Y	N
<b>Metro</b>																
All shades	105	20	*1000 - 2400	N	Y	N	N/A	N	N	5	Y	N	BLT Ultra	BLT Ultra	Y	N
All shades	150	20	*1000 - 2400	N	Y	N	N/A	N	Y	5	Y	Strata	BLT Ultra	Strata BLT Ultra	Y	N
All shades	200	20	*1000 - 2400	N	Y	N	N/A	N	Y	5	Strata	Strata	BLT Ultra	Strata BLT Ultra	Y	Solid
All shades	135	16	600 - 2000	N	Y	N	N/A	N	N	5	N	N	BLT Ultra	N	Y	N
All shades	300	20	*2000 - 3000	N	Y	N	N/A	N	Only	5	Y	Y	BLT Ultra	BLT Ultra	Y	N
<b>Coastal &amp; Country</b>																
All shades	105	20	*1000 - 2400	N	Y	N	N/A	N	N	5	Y	N	BLT Ultra	BLT Ultra	Y	N
All shades	150	20	*1000 - 2400	N	Y	N	N/A	N	Y	5	Y	Strata	BLT Ultra	Strata BLT Ultra	Y	N
All shades	200	20	*1000 - 2400	N	Y	N	N/A	N	Y	5	Strata	Strata	BLT Ultra	Strata BLT Ultra	Y	Solid
All shades	135	16	600 - 2000	N	Y	N	N/A	N	N	5	N	N	BLT Ultra	N	Y	N
All shades	300	20	*2000 - 3000	N	Y	N	N/A	N	Only	5	Y	Y	BLT Ultra	BLT Ultra	Y	N
<b>Traditional Parquet</b>																
All grades	70	21	280	N	N	Y	N	N	N	10-15	Y	N	BLT Ultra	BLT Ultra	N	N
All grades	90	21	600	N	N	Y	N	N	N	10-15	Y	N	BLT Ultra	BLT Ultra	N	N
All grades (chevrons)	90	21	510	N	N	Y	N	N	N	10-15	Y	N	BLT Ultra	BLT Ultra	N	N
<b>Vintage Parquet</b>																
All shades	70	21	280	Semi Finished	N	N	N	N	N	10-15	Y	N	BLT Ultra	BLT Ultra	N	N
All shades	90	21	600	Semi Finished	N	N	N	N	N	10-15	Y	N	BLT Ultra	BLT Ultra	N	N
All shades (chevrons)	90	21	510	Semi Finished	N	N	N	N	N	10-15	Y	N	BLT Ultra	BLT Ultra	N	N
<b>Pullman Vintage Parquet</b>																
All shades	70	21	280	Semi Finished	N	N	N	N	N	10-15	Y	N	BLT Ultra	BLT Ultra	N	N
All shades	90	21	600	Semi Finished	N	N	N	N	N	10-15	Y	N	BLT Ultra	BLT Ultra	N	N
All shades (chevrons)	90	21	510	Semi Finished	N	N	N	N	N	10-15	Y	N	BLT Ultra	BLT Ultra	N	N

# Doors

Doors are one of the most important architectural features of any building. They define its personality and are one of the easiest and most overlooked ways to transform the whole look and feel of a house. Beautiful doors exude taste and quality, adding a subtle sense of style to any room or façade and our exclusive collection has all you need to really make an entrance.

Our external doors are individually hand built to meet your needs and suit your home in seasoned French Oak or ready to be painted. For interiors, choose from our traditional plank doors to add character or our beautifully proportioned panelled doors for period elegance or classic modern style.





# Internal Plank Doors



There are few better ways to bring rustic charm to a room than with our traditionally crafted oak plank doors.

Built from our beautifully figured Cottage or Elegance oak, your door will typically feature 4-6 planks and be finished with traditional rosehead nails. If you prefer a less rustic feel the nails can be omitted.

Made to measure in our workshops as full size or cupboard doors, they can easily accommodate non-standard apertures. They can also be made to suit slanted openings in attic rooms or stable style (great for utility rooms) and are available as certified fire doors with a half hour rating. Choose from a sanded finish to seal in situ, or one of our signature workshop finishes detailed on page 96.



Plank door in Elegance Oak

Front



Back

# Internal Panelled Doors





4 panel



6 panel

Add timeless elegance to interiors of all styles with our desirable collection of panelled oak doors.

Beautifully designed and classically proportioned they are an extremely affordable luxury, combining solid oak, meticulous veneers and stable softwood for the look, feel and weight of a traditionally hand built construction.

If your doorways are not standard, don't worry, bespoke sizes are available in all designs. If you thought fire doors were ugly, think again, we can offer both 4 and 6 panel doors with a half hour rating.

Whatever design or size you choose, you have the option of a sanded finish to be sealed in situ or one of our workshop finishes on page 96.



Half glazed



10 pane



15 pane



Glazing is bevelled on one side

# Door Finishes

## Nude

An almost invisible finish that barely changes the tone of the oak.



## Classic

A natural finish that brings out oak's warm golden tones.



## Aged

A finish that highlights the grain and adds a caramel tone for a lived in look.



Choose one of our signature shades and have your doors hand finished in our workshops to make installation even easier. Satin matt and semi opaque these beautiful hardwax oil colours are natural looking, hard wearing and practical.

## Warm

A mellow honeyed tone, tinged with russet.



## Rich

A luxuriant polished oak tone.



## Dark

An inky Jacobean tone.



For an authentic vintage look and feel, plank doors can be Brushed & Burned to add natural colour that graduates from edge to centre and a rich, tactile patina.

## Light

From burning at the edges only to traces of burning towards the centre of the board.



## Medium

From traces of burning towards the centre to burning across most of the face.



## Dark

A substantial degree of burning across most or all of their face.



# Internal Doors

## Essential Information

### Plank Doors

#### Product Information

Our plank doors are available in a choice of Cottage or Elegance Oak.

They have 3 ledges on the rear and diagonal braces can be supplied on request. Knots are filled as necessary and the doors are machine sanded.



**Cottage** – a more rustic style of door with large and small knots and richer colour variation. Combine with an aged finish for a really traditional look.



**Elegance** – a cleaner looking door with only small knots. Order without rosehead nails for a more contemporary country feel.

Doors to be hinged on the face will have stopped ledges (stopped slightly short of the edge of the door) that are chamfered all the way round. Those to be hinged on the rear will have through ledges which run to the edge of the door and are chamfered top and bottom only. Decorative rosehead nails are added to the face but can be omitted if you tell us when you order.

If you choose one of our workshop finishes, no further finishing will be necessary. If your door is sanded or Brushed and Burned it will need to be sealed with a suitable interior finishing product. Door furniture is not supplied with doors.

#### Measurement

Oak plank doors are made to measure and can be made up to 914mm x 2000mm. We recommend that measurements are taken by whoever is going to fit the door to avoid the need for onsite adjustments. Bear in mind that measurements will need to take account of any floor coverings, although these may not always be present when the measurements are taken.

#### Installation

Hang full size doors on traditional T or strap hinges at least 15" long. These will need to be cut into the architrave and fixed to the face of the door that you want to open towards you. Where the hinges are to be fixed will determine how the ledges are finished (see above) and will therefore need to be decided at the time of order. Where hinges are to be fixed to the ledges of the door, a door block will be supplied with the door to take the latch.

Oak plank doors are typically closed using a traditional Suffolk or Cottage latch. To fix a Suffolk latch you will need to cut a slot of approx 6mm x 25mm in the door for the thumb latch element to pass through and pivot. The 'staple' is then tapped through the door and the sharp ends knocked back against the timber on the other side or pinched off.

#### Storage

Our plank doors should always be stored flat, and raised off the floor with blocks or another suitable support that will not damage them. They should never be stored outside or in any environment where wet works are not fully dry (as defined in Section 1 of Installation Guide – Floors).

### Panelled Doors

#### Product Information

Our panelled doors have a stable softwood core with 18mm solid oak wear strips at each side and oak veneered panels surrounded by integral solid oak mouldings. Some natural colour variation should be expected and please

note that there is a slight difference between the panel construction of standard doors and fire doors.

Doors are available in a choice of widths, depending on design, as shown in the table below. They are 40mm thick, except fire doors which are 44mm, and 1981mm high. Bespoke sizes to 1000mm x 2100 are also available.

Doors can be adjusted as follows:

Laterally: up to 10mm on each side

Vertically: up to 25mm from the top and 50mm from the bottom

#### Installation

Hang on 3 good quality butt hinges suitable for their weight (approx 25kg). Please note that slamming strips set for 35mm doors will need to be adjusted.

If you are fitting fire doors, note that closers and smoke seals may be required to comply with building regulations. We can supply door liners with integral smoke seals to match these doors.

#### Finishing

If doors are ordered with a sanded finish they will need to be lightly hand sanded after fitting with 120 grit paper and sealed with a suitable interior finish to protect from marks and general wear and tear. If you choose one of our workshop finishes, no further finishing will be required. Please bear in mind that additional care will be necessary at fitting stage to avoid damaging prefinished doors.

#### Storage

Our panelled doors should always be stored flat, with a solid support that will not damage their surface

(i.e. a sheet of chipboard on a concrete sub-floor) between the bottom door and the floor. They should never be stored outside nor in any environment where wet works are not fully dry (as defined in Section 1 of Installation Guide – Floors).

### Oak Door Liners

#### Product Information

Oak door liners are available in Cottage or Elegance grade. We recommend Elegance to complement our panelled doors.

Standard liners are 132mm wide. Made to measure liners are also available in any width up to 200mm. Both are made from single pieces of solid oak and are un-notched.

All of our door liners are 24mm thick and are supplied complete with slamming strips (door stops). Options with integral smoke seals to be used with fire doors are also available.

#### Installation

Oak door liners should only be fitted after plastering is complete and fully dry as wet plaster is likely to warp them and will react with the tannin in the oak and turn them purple. To create a flat edge against which to plaster, use waste timber set the correct distance back to accommodate the oak liner once the plaster is fully dry. Fit oak liners using screws of suitable depth covered with slamming strips or wooden plugs.

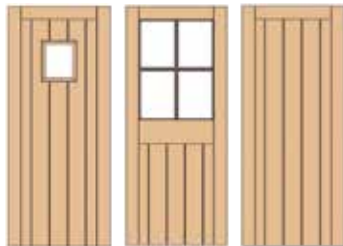
	4 Panel	6 Panel	Half Glazed	10 Pane	15 Pane
2'0	✓	✓	x	x	x
2'3"	✓	✓	✓	✓	x
2'6"	✓	✓	✓	✓	✓
2'9"	✓	✓	✓	x	✓
Bespoke	✓	✓	✓	✓	✓
Fire (FD30)	✓	✓	x	x	x

# External Doors



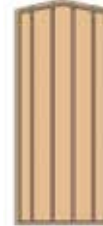
Impressive and inviting, our beautiful external doors are built by hand to last a lifetime. Every one is unique, made to measure in our workshops from carefully selected timber to your specifications and its own individual design drawing. Our classically inspired designs include options for properties of all styles and openings of all sizes or we can create entirely bespoke doors to meet your particular needs. Most designs are available in both an Oak and a paintable option – see P101 for details.

### Fermette



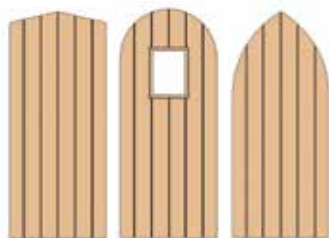
A traditional framed, ledged & braced plank door, slightly rustic in style. Available with vision panel or glazed and can be made as a stable door.

### Chateau



This is a beautiful, period design, reeded on the front face, framed and ledged on the rear and featuring an authentic and elegant Tudor arch.

### Manoir



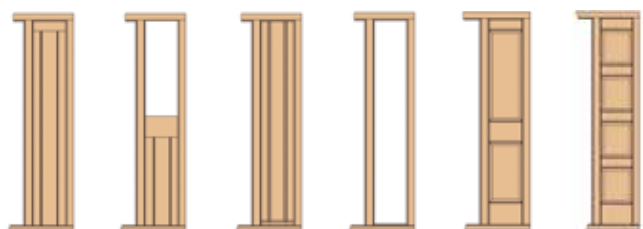
This simple but majestic door is internally ledged leaving the planks uninterrupted on both sides. Available with a choice of elegant arched heads and with a vision panel option.

### Bespoke



If you need to match existing doors, have a particular style in mind or just want something different, talk to our design team about an entirely bespoke door.

### Side Panels



If you have the luxury of a larger entrance, side panels can be added to any of our external doors to stunning effect. Choose from glazed and solid options in a range of complementary styles.

All of our designs are available in Oak to be finished as you choose and most can also be made from hardwood, which is primed by us ready for you to paint in the colour of your choice.

### Deco



Simple and stylish, this elegant 2 panel door is typical of its period with two raised panels surrounded by classic Ovolo mouldings.

### Edwardian



The classic 4 panel door; a period inspired feature equally suited to a modern property. With handcrafted panels, it is equally stunning in oak or primed for painting.

### Georgian



A timeless 6 panel door; perfectly suited to a tall aperture to create the look and feel of a 'grand' entrance. Illuminate darker hallways with glazed toplights.

### Bank



Bank is the ultimate 'porte de resistance', an imposing 8 panel door fit to grace the most splendid entrance either alone, or with its matching side panels.

### Classic French Doors



Our beautiful French doors look stunning in any style of property, introducing light and a sense of space. Choose from fully or part glazed designs, which can be combined with fixed side panels if required. All are supplied double glazed and with frames to be hung in situ.

# External Doors

## Essential Information

### Product Information

Broadleaf External Doors are all made from beautiful solid wood and traditionally handbuilt in our workshops. All designs are available in French Oak and most are also available in a paintable option combining sustainable exotic hardwood and Oak for additional stability. This and other options for each design are shown on the table below.

Due to our Great British climate, and the fact most people shy at the sort of regular adjustments traditionally made to exterior joinery in response to the weather, our doors should be fitted into porches or entrances not directly exposed to elements. Should you fit them elsewhere you should expect them to need regular rather than just occasional seasonal adjustment.

With the exception of French Doors which come with a frame as standard, all of our external doors, frames and side panels are sold separately so that you can order the elements that you require to create your entrance.

All items are made to measure. Published prices are for doors and frames to 1000mm x 2100mm, doors to 900mm x 2000mm and

side panels to 500mm x 2100mm. Larger sizes can be made for a supplement design permitting.

### Finishing

Broadleaf Oak Exterior Doors are supplied machine sanded to be sealed with the finish of your choice. Broadleaf Paintable Exterior Doors are supplied primed ready for paint. In both cases they must be sealed before fitting with a product suitable for exterior use, in line with manufacturers instructions, all round, including under hinges or other furniture.

If any finish or paint is removed as part of fine tuning during the installation process, this must be reapplied in full (all coats).

For Oak Exterior Doors, we recommend finishing with Osmo UV Protection Oil Extra 420. This is a natural oil finish which will protect the timber but allow the door to weather to a grey patina over time.

If you wish to enhance the natural oak colour of your Oak Exterior Door or finish it in a different tone, we recommend using Osmo Natural Oil Woodstain as an undercoat to the 420 UV Protection Oil.

These finishes can be ordered separately. They can also be applied to your door in our workshop if you prefer, but in this case you will almost certainly need to order spare finish so that whoever is fitting your door can re-touch any areas exposed as a result of fine tuning during installation.

Please bear in mind that any finish will require regular re-application if it is to remain effective – this will normally be at least annually, but will depend on product and how it wears. Failure to maintain your finish is likely to lead to abnormal movement in your door.

### Furniture

All Broadleaf External Doors are supplied without furniture but we do offer a selection of External Door Furniture that can be ordered separately should you wish.

Broadleaf External Doors are not supplied pre-hung and should be hung in situ into a frame that is secure and square in its final position using 3 good quality 3" x 4" ball bearing hinges suitable for their weight (60 – 80kg depending on size and design).

A traditional style weather bar is fitted into all of our door frames.

This is an elegant strip of steel or brass depending on your preference that protrudes from the base of the frame by approximately 12mm to prevent rain being blown in under the door. You can request that this is omitted but in this case you will need to fit an alternative when the door is installed.

### Design Drawings

Once you have chosen your preferred design and provided us with dimensions, we will prepare an individual design drawing for you to accompany your quote.

This will show you how your door will look and include your particular specification details. Any amendments required can be made simply and easily by our design team and the final drawing will need to be signed off to confirm your order. We would always recommend that this drawing is discussed with whoever is fitting your doors and has measured them and that they also sign this off.

### Drip Bars

All of our external doors, with the exception of the Chateau, can be fitted with a drip bar if you wish. This should be ordered separately but please bear in mind that it is not an alternative to a weather bar which is also required.

### Glazing

Glazed external doors and side panels are supplied with 14mm double glazing unless otherwise specified as are fanlights. This can be replaced by 6mm safety glass if you prefer and a bullseye option is also available for vision panels. These preferences should be indicated when you order and will be marked on your invoice.

If you wish to install custom glazing in your external doors, you will need to supply the dimensions for this, including thickness, when you order and have this fitted at the same time as the door.

### Letterboxes & Catflaps

Letterboxes and cat/dog flaps can be accommodated by most designs and fitted in our workshops. You will need to

Options	Fermette	Manoir	Chateau	Edwardian	Georgian	Bank
Stable	✓	x	x	x	x	x
Vision Panel	✓	x	x	x	x	x
Part Glazed	✓	x	x	✓	✓	x
Square Head	✓	✓	x	✓	✓	✓
Tudor Arch Head	✓	✓	✓	x	x	x
Gothic Arch Head	x	✓	x	x	x	x
Full Arch Head	x	✓	x	x	x	x
Square Head Frame*	✓	✓	✓	✓	✓	✓
Arched Head Frame*	x	✓	x	x	x	x
Side Panels	✓	✓	✓	✓	✓	✓
Fanlight	✓	✓	✓	✓	✓	✓
Paintable Option	✓	x	x	✓	✓	✓

\* Refers to outer perimeter of the frame

request this service when you order your external doors, and either order the item from our range of exterior door furniture or supply it before we begin construction.

**Measurement**

Broadleaf External Doors, Frames and Side Panels are all made to measure. Published prices are for doors and frames to 1000mm x 2100mm, doors to 900mm x 2000mm and side panels to 500mm x 2100mm.

Larger sizes can be accommodated design permitting, but will carry a supplement. For a quote for an oversized door, just contact your nearest showroom or Broadleaf Head Office.

Accurate measurement is essential for straightforward installation and a weatherproof door and should be done by the intended fitter.

**Movement**

It is normal for exterior doors made from solid wood to move slightly in response to changes in humidity and temperature. In the long term, as long as they are regularly maintained with a suitable exterior finish and not directly exposed to the elements, this movement is likely to be minimal, but in the short term (normally after the first winter) seasonal adjustment may be

required to take account of 'settling in' movement.

Less movement should be expected from paintable doors but these should also be expected to move slightly in response to climatic conditions and may also require seasonal adjustment.

Seasonal adjustment should be able to be done by the same installer who fits the door at an additional charge.

**Timber Selection**

The Oak used for our external doors is carefully selected for its particular purpose. Timber used for panelled doors will only feature occasional pin knots. Timber for Manoir, Chateau and Fermette doors may feature some cat's paw and occasional small knots which will be filled before sanding if necessary.

**U-Values**

We can supply U values for all of our exterior doors upon request. Please ask us if you need or want this information.

**Delivery**

Please note that due to their weight, our drivers cannot unload external doors alone. If you will not be able to provide assistance, please let us know when you order and we can arrange additional manpower for an additional charge.





# Extras and Accessories

From impressive Oak trusses that are the focal point of a room to discreet thresholds that make the transition between different floorcoverings barely noticeable, our Extras & Accessories are all about beautiful details.

Some, such as our range of wood finishes and trims, are designed to be used as the final flourish to our floors and doors. Others, like our stair cladding create stunning features in their own right. All can be relied upon to bring a subtle but undeniable sense of luxury.





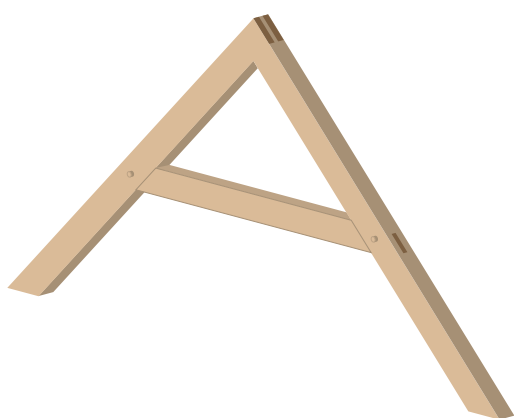
# Oak Trusses



Exposed Oak roofs are a unique way of creating a majestic sense of space that retains warmth and intimacy. Structural or cosmetic, as part of a new build or a restoration project, our superior quality roof trusses are traditionally hand built to meticulous standards by highly experienced craftsmen. They are individually constructed in our workshops to your specifications using green oak selected from the finest French sawmills.

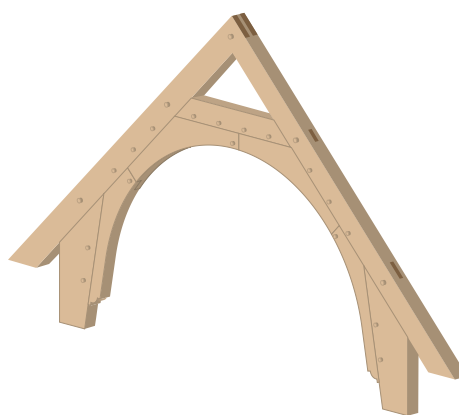
---

**Raised Tie Truss**



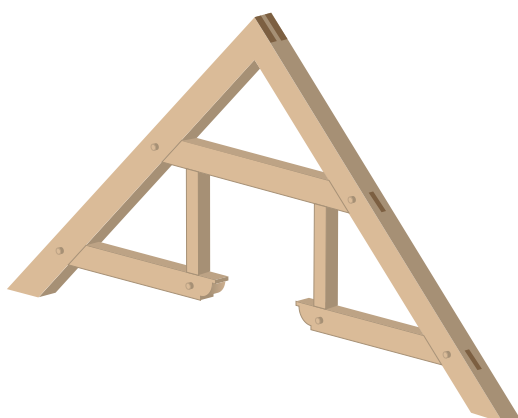

---

**Raised Collar Truss**



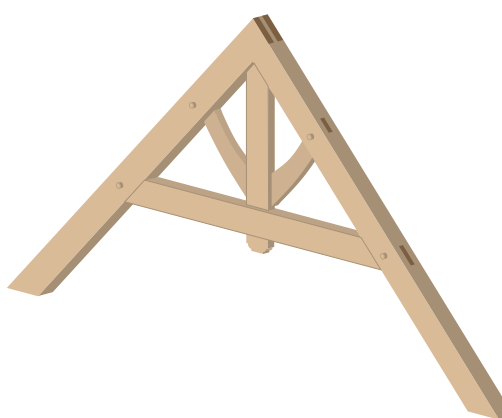

---

**Hammer Beam Truss**




---

**King Post Truss**



The designs above are just some of the classic constructions available. We can vary and adapt these to suit particular surroundings or individual aspirations and advise on exactly what might be suitable depending on your requirements.

If you are looking to build a complete Oak roof we can also supply all of the other elements required including wall plates, purlins, ridges and rafters, all pre-jointed ready for assembly. Like the trusses, these are crafted to individual specifications which can be provided by your architect or established by our design team, who have considerable expertise in this area and can offer design consultancy, drawings and structural calculations.

**Helpful Hint**

Supplied assembled our oak roof trusses can either be cross grain sanded and sealed with a coat of our own exterior oil, or left unfinished to be sanded and finished after installation.

# Stair Cladding & Components



Upgrade existing stairs or transform concrete or timber base steps to create a beautiful feature staircase with our handcrafted oak stairparts. Choose from simple or more decorative profiles to add lasting beauty to properties of all styles.

---

## Handrail

Our classic handrails can be supplied to fit spindles to create balustrade or to be wall mounted in any length up to 4.2m.



Round



Mushroom



Ogee

---

## Bullnose

Designed to fit neatly under our landing carriage. 80mm x 20mm up to 4.2m




---

## Carriage

Available for stairs or landings to fit any of our spindles in lengths to 4.2m. Spacers should be ordered separately.




---

## Newels

90mm square, made to length to 4m.




---

## Newels Caps

Finish newels neatly with classic ballcaps or chamfered newel caps.



---

## Treads

250mm x 1000mm x 23mm with bull nosed or chamfered profile. Bespoke sizes and treads without tongue and groove also available.



---

## Risers

200mm x 1000mm x 16mm. Bespoke sizes and risers without tongue and groove also available.



---

## Spindles

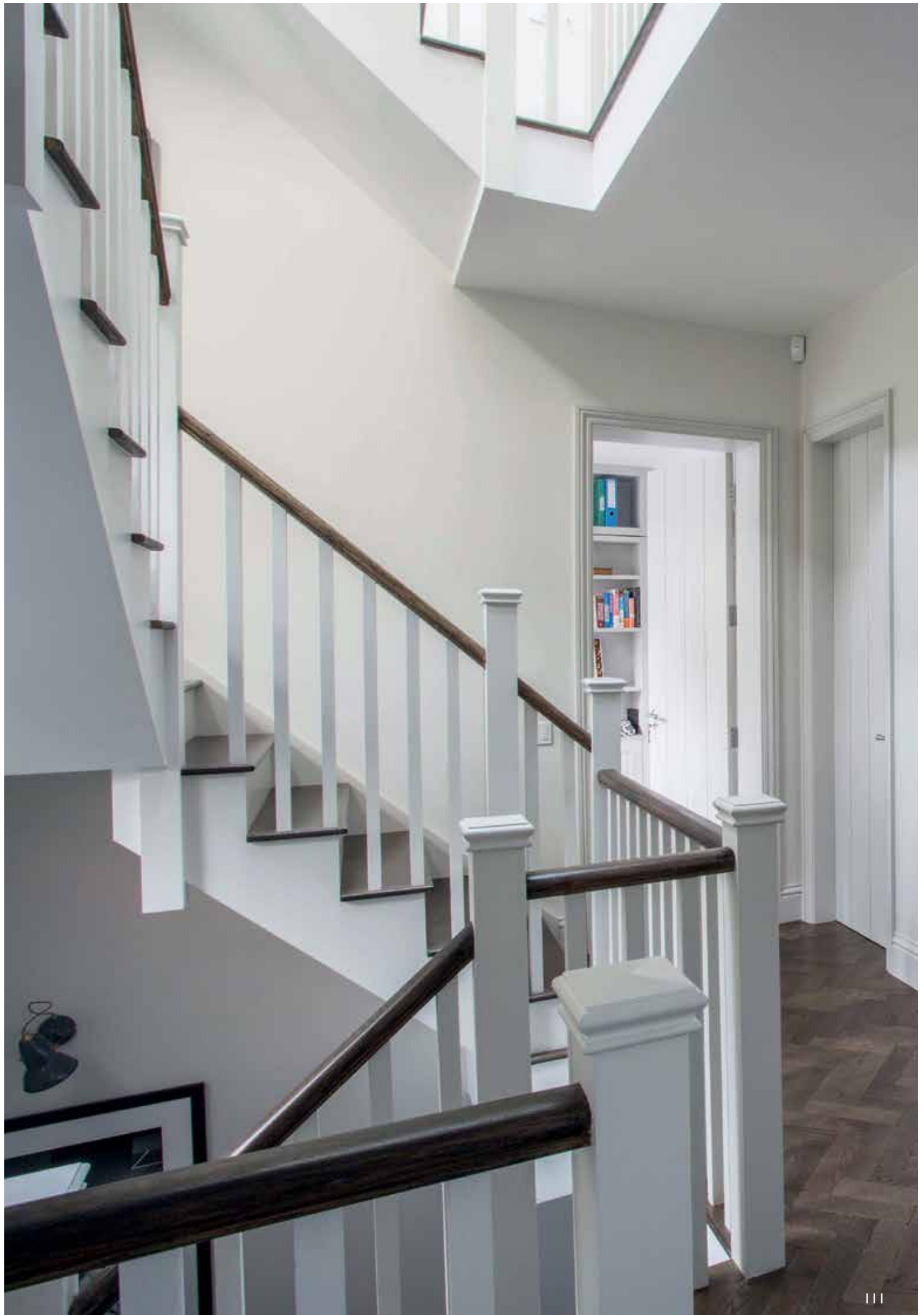
Classic straight spindles in 20mm/24mm/30mm. Turned spindles are made to order. All are supplied in 900mm lengths to be cut in situ.



For a true designer look, take advantage of our finishing service to have your oak stair cladding or components finished to tone with your floor. For maximum impact have the treads, risers and handrails treated in this way and paint structural elements such as the spindles and carriage in a shade to complement the rest of your scheme.

### Helpful Hint

Bottom Risers and top treads should be ordered without tongue & groove, as should treads for off square staircases, which should also be ordered oversize to allow for cutting.



# Ironmongery



Carefully sourced and beautifully crafted our new expanded ironmongery collection offers all you need for perfect finishing touches to your beautiful real wood throughout. Our favourite pieces are showcased here with the complete selection available on our website. Please bear in mind that as most are handmade slight differences between individual pieces are a feature.

---

### T hinges

The classic style of hinge for traditional plank doors. Available in a choice of designs, finishes and sizes and supplied in pairs.




---

### Suffolk Latches

The archetypal plank door latch available in classic Penny or Gothic designs in a choice of finishes. Locking staples are also available to match should you prefer these to an independent bolt.




---

### Pull Handles

Perfect for cupboards, drawers or doors, these traditional style pull handles are available in classic Penny or Gothic designs to match the traditional T hinges and Suffolk latches in a choice of sizes and finishes.




---

### Thumb Latches

A classic thumb latch designed to be opened from one side only, ideal for coat or other storage cupboards to complement traditional Suffolk Latches and T Hinges. Choose from traditional Beeswax or more contemporary Pewter finishes.




---

### Privacy Latches

Easy to open, even for the smallest fingers, this rustic style latch is designed to be opened from one side only and can be used on cupboards or as a simple alternative to a shoot bolt. Choose from traditional Beeswax or more contemporary Pewter finishes.




---

### Shoot Bolts

These simple, rustic shoot bolts are available in a choice of sizes and finishes in both straight options designed for doors that open towards you and cranked versions for doors that open away.



---

### Coat Hooks

A selection of both simple coat hooks and larger coat & hat hooks in a choice of finishes. Should you wish we can also supply oak backboards for these so that you can create your perfect coat rack.



---

### Smaller Hooks

Pretty hooks in a choice of traditional Fleur de Lys and Gothic designs in a choice of finishes, perfect for dressing gowns, teatowels, dog leads, keys, in fact just about anything!



---

### Interior Door Knobs

A beautiful selection of classic door knobs for interior use, in a range of designs and finishes. Choose from brass, wood, nickel, pewter and more. Sold in pairs they are designed to be fitted to a sprung mortice latch.



---

### Exterior Door Knobs

Classically designed centre door knobs handcrafted and carefully shaped to suit the range of front door and property styles. Sold individually to fit to the exterior face of the door with the provided bolt and help draw it closed.



---

### Lever Handles

A beautifully crafted selection of lever handles designed with both traditional and contemporary settings in mind. Available in a range of finishes, most of which can be used both inside and out, they are all supplied in pairs to be fitted to a sprung mortice latch / lock.



---

### Sprung Lever Handles

A classic range of sprung lever handles designed to be used with a simple mortice latch. Available in a choice of finishes, most of which can be used both inside and out, they are all supplied in pairs to be fitted to a mortice latch / lock.



---

### Letter Plates

An elegant selection of hand-made letter plates, sprung loaded and made from either high quality steel with a choice of finishes or classic solid brass. Knobs and knockers are available to complete the look in each case.



---

### Door Knockers

The ultimate finishing touch for an impressive front door, these hand crafted door knockers are weighty and tactile. Available in a range of finishes (please note that Beeswax should not be exposed to the elements) they come complete with strikers and fixing screws.



## Window Latches

There is something to suit all property styles in our carefully crafted range of window fasteners, as well as locking, non locking and night venting options. Sold individually they are available in left and right hand options in a choice of finishes.



## Window Stays

Our window stays come in choice of attractive styles and finishes to match our range of window latches and suit the spectrum of properties. All designs are available in a choice of classic sizes - 8", 10" and 12".



## Espagnolettes

Espagnolette handles are an elegant closing solution for all kinds of locking windows be they wood, upvc, aluminium or engineered timber. Available in a choice of styles and finishes they come complete with allen key and matching fixing bolts.



## Escutcheons

Our pretty escutcheons offer a wide choice of finishes and shapes, both open and covered, to match our handles and knobs should you wish to combine them with a separate lock.



## Curtain Furniture

Complete your room in classic style with our beautiful curtain poles in either pewter or beeswax finishes with a choice of elegant finial designs, matching brackets and simple curtain rings. Brackets and finials are sold in pairs.



## Cupboard Knobs

Whether you are refreshing your existing kitchen, finishing off a new one or just looking to perk up an old piece of furniture, our extensive range of cupboard knobs will let you do it in style. Choose from a fabulous selection of designs and finishes in a choice of sizes.



## Drawers Pulls

Carefully crafted you can instantly feel the quality of our traditionally styled drawer pulls. Available in pewter, black and beeswax finishes in a choice of classic designs they are sold individually and come complete with fixing screws.



## Letters & Numbers

Dress your doors in style with these fabulous heavy weight numbers and letters in a choice of finishes that will suit traditional and modern properties alike. Fix them to a backboard to create your own stunning house name sign.



# Skirtings and Trims

Carefully selected and beautifully machined, our choice of hardwood trims ensure a high quality, professional looking finish.

## Oak Skirting



Our French Oak skirting is available in 2 classic profiles – Ogee & Chamfer. It features some knots which are occasionally open and will need to be filled and sanded after fixing and prior to finishing. We recommend that it is screwed and plugged, not glued.

## Beading

Scotia and Quadrant marry new floors to existing skirting. 2.4 – 3m lengths depending on product.



## Oak Window Sills

Our Oak window sills can be made in any size to 850mm wide by 3.5m long in Cottage or Elegance grade and either prefinished or left sanded for the finish of your choice. Sills over 2m will be jointed.



## Thresholds

Thresholds ensure a neat transition from room to room, even between floors of different heights. As well as our standard options shown below, we also offer bespoke options in a choice of timbers which can be finished to complement most of our floor finishes.



## Oak Architrave

Surround internal doors with beautiful Oak architrave in Ogee or Chamfer profile for maximum impact. Combine with Oak Door Liners (page 97) for a complete Oak doorway.



# Finishes and Fitting Products

For a professional installation and high quality finish, take advantage of our experience and use our recommended fitting and finishing products. Refer to the flooring selector and installation guide for further guidance on suitable applications, or ask our staff.



Finishes	Finish	Description	Size	Coverage	Time to recoat
Classic Broadleaf Hardwax Oil	Matt Satin	A clear, natural hardwax oil that protects and enhances floors, doors and other internal joinery	1L/2.5L	24m <sup>2</sup> /L	4-6 hours
Coloured Broadleaf Hardwax Oil	Matt Satin	A range of natural looking hardwax oil shades designed for internal use. Use alone or topcoat with Classic Hardwax Oil for a more subtle shade.	1L/2.5L	24m <sup>2</sup> /L	4-6 hours
Nude Broadleaf Hardwax Oil	Matt Satin	A unique hardwax oil designed to create a bare wood look on internal timber.	1L/5L	15m <sup>2</sup> /L	1-2 hours
Osmo Polyx Oil	Matt Satin	A clear hardwax oil blend for floors, doors and other internal joinery	0.75L/2.5L	24m <sup>2</sup> /L	8 -10 hours
Bonakemi Mega	Various	A professional water based floor lacquer for domestic or light commercial use.	1L/5L	8 -10m <sup>2</sup> /L	1-2 hours
Bonakemi Traffic	Matt/Silk matt	A professional water based floor lacquer designed specifically for high traffic areas	1L/5L	8 -10m <sup>2</sup> /L	1-2 hours
Osmo UV Protection Oil 420	Matt Satin	A high quality oil based finish for exterior joinery that helps maintain colour.	0.75L	17m <sup>2</sup> /L	12 hours
Osmo Natural Oil Woodstain	Matt Satin	A range of protective oil based colours for exterior joinery.	0.75L	25m <sup>2</sup> /L	4-6 hours
Fiddes Wood Dye	N/A	A range of solvent based professional stains in traditional tones.	1L	36m <sup>2</sup> /L	6-8 hours
Adhesives	Description	Size	Coverage	Curing Time	
Broadleaf Ultra	A premium quality MS polymer adhesive specifically designed to plank & parquet floors with no VOCs.	10kg/15kg	0.8kg/m <sup>2</sup>	12-88 hrs	
Broadleaf Ultra Dry	A solvent free, water based epoxy primer & moisture barrier for use with Broadleaf Ultra adhesive.	6kg	0.2kg/m <sup>2</sup>	25-48 hours	
Lecol PVAC	A water based adhesive for use when floating our Strata & Essentials boards	1L	50m <sup>2</sup> /L	n/a	
Portanails	Professional barbed flooring nails for secret nail fitting with a Portanailer Hammer	1000/pack	Av 40m <sup>2</sup>	n/a	

Nothing captures the warmth and wonder of nature like wood, and nothing defines the spirit of your home like a unique piece of handcrafted joinery. Be it a bold focal point or more subtle architectural feature, rustic or refined, its timeless organic beauty will enchant and impress.

Broadleaf Design is an entirely bespoke service which combines our passion for design and traditional craftsmanship, and offers you the chance to create beautiful timber features for your home as individual as the trees from which they originate.

Traditional or modern in style, humble or majestic in scale, we are always excited by a new project and look forward to hearing about yours.

[design@broadleaftimber.com](mailto:design@broadleaftimber.com)

# Design





---

## Design and Planning

The first stage of any design project is customer consultation. We discuss your project, listen to your ideas and look at any plans or visuals, then offer some initial design ideas and ballpark costs. This consultation is free of charge unless we attend site.

For more simple projects it is usually sufficient for us to produce a preliminary quote and drawings. On approval of these we can then take final details, confirm our quote and plan production.

For more complex projects further discussions and a site visit are usually needed to evolve the design before producing detailed drawings. Structural calculations can also be necessary. A project of this kind is charged on a consultancy basis; the designs produced belong to the client with no obligation to use Broadleaf Design for the implementation stage.

---

## Building your timber feature

Timber for each project is carefully selected for its specific purpose. It is usually oak, although we do introduce other timbers where appropriate. Whatever timber we use is sourced from trusted suppliers and sustainable forests. Where designs include other natural materials such as glass, zinc or iron, we can also source these from other craftsmen with whom we work.

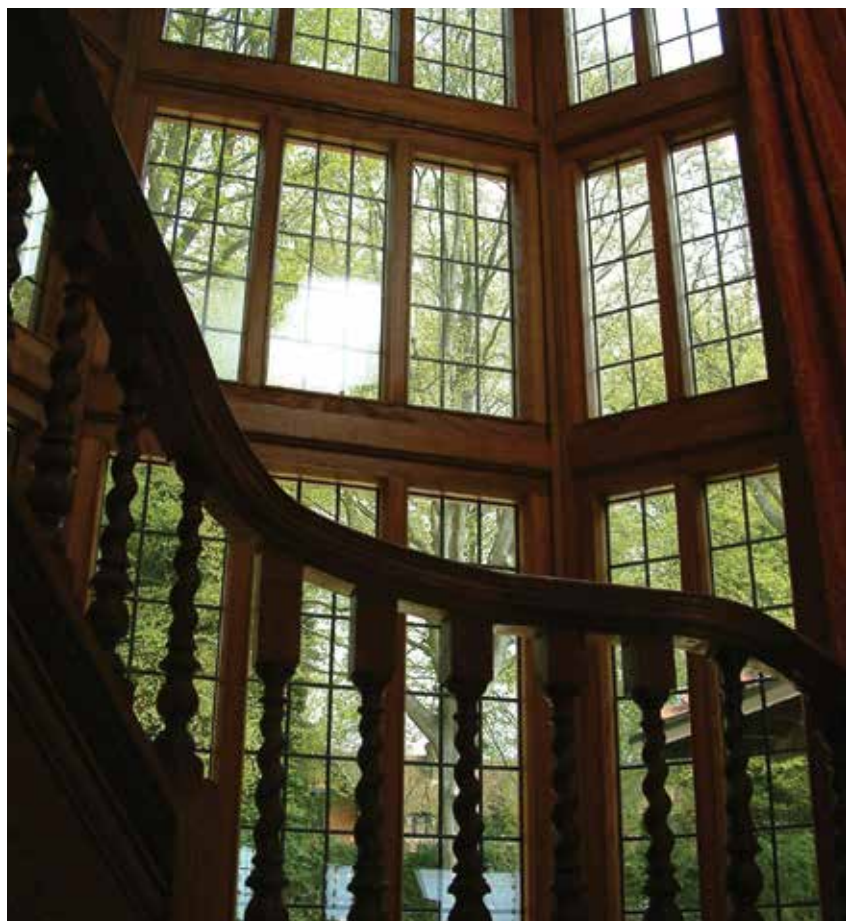
According to your needs we can either supply, or supply and fit your project. Our skilled team includes joiners, glaziers, carpenters, oakwrights and cabinet makers who are managed by Broadleaf Design to ensure smooth project running and the highest quality of workmanship.

---

## Next Steps

These images offer a taste of the Broadleaf Design portfolio. If you would like to see more examples, browse [www.broadleaftimber.com/design](http://www.broadleaftimber.com/design). If you would like to discuss a project with Broadleaf Design, contact us through your nearest Broadleaf showroom, or directly at [design@broadleaftimber.com](mailto:design@broadleaftimber.com)





# Customer Services & Information

## Samples

Flooring samples are available from our showrooms or by post. These are complimentary, but if you require more than 3 samples to be sent then there is normally a small charge towards postage.

Please note that due to their size, these samples cannot represent the natural variation that will occur across a floor and should only be taken as a general guide to colour and illustration of dimension.

## Delivery

We offer a nationwide to the door delivery service which includes unloading into ground floor rooms. We can arrange delivery to upper floors as an additional service.

Drivers will require assistance to unload external doors due to their weight. If you are unable to provide this, please notify us when you order and we can arrange additional manpower for an additional charge.

Some smaller, less fragile items, and deliveries to more remote areas are sent using a commercial carrier where this is more economical. Tariffs vary according to location and volume but can be quoted upon request by our staff.

## Equipment Loan

We offer courtesy loan of Tramex concrete encounter meters, relative humidity meters and Portanailer guns to all of our customers through our showrooms. Please ask staff for details. We also hire domestic floor buffers.

## Installation Guide

As well as the flooring guide in this brochure you can also find one on our website [www.broadleaftimber.com](http://www.broadleaftimber.com) in the Help & Guidance section, should you wish to refer any fitters or other contractors to it.

## Advisory Service

Whether for a single room or an entire home, if you have never purchased a wooden floor or doors before, it can be a daunting prospect. We understand this and our experienced staff are there to help you. They will be happy to offer ideas and advice on what might best suit your particular requirements.

## Lead Times

Products that are not made to measure or finished to order are normally kept in stock and can usually be despatched within 5-10 working days depending on delivery schedules. Bespoke items are subject to a longer lead time to allow for their production.

## Website

Our website gives us the opportunity to show many more photos than can ever be included practically in this brochure, as well as current design ideas, advice and up to date details of any new products.

We invite you to browse [www.broadleaftimber.com](http://www.broadleaftimber.com)

## Ordering

You can order from any of our showrooms or our head office. Orders can be made in person, by phone, fax or email. If you are hoping to match to a previous order please make staff aware of this when you order and ensure that it is noted on any invoice.

Please note that all orders are subject to our full terms of business, which are detailed on written quotes and invoices, and are available on our website.

## Recommended Fitters

Broadleaf have a network of recommended fitters, independent craftsmen who are familiar with our products and installation guidelines and whose workmanship is constantly reviewed to ensure it meets the standards we expect. They are generally based near our showrooms but most will travel. Should you require installation services our staff will be happy to arrange for one of them to contact you.

Alternatively, we are happy to offer advice or information to you or your own tradesmen. Please make sure that whoever undertakes the installation has read our installation guide and follows its guidance.

## Storage

All products made from kiln dried timber must be stored inside. They should not be stored near any concrete or plaster that is not fully dry and has not been heated for at least 2 weeks. Doors and worktops must be stored flat but not in direct contact with the floor. Flooring must be unwrapped and lattice stacked.

## Specifications

Specifications of flooring and doors are detailed in the relevant information sections. Specifications of accessories are included in the relevant product pages.

These are correct at the time of printing but from time to time it is necessary for us to change product specifications without notice, so please confirm them at the time of order. If you have any queries, our staff will be pleased to help you.

## Sustainability

At Broadleaf we value the natural environment and are committed to promoting responsible forestry. Our timber is sourced from well managed forests, the majority of which are FSC or PEFC certified. The FSC and PEFC are independent, international bodies which set standards for forest management and chain of custody procedures and certify forests and companies that meet these.

Further information can be found at [www.fsc.org](http://www.fsc.org) and [www.pefc.org](http://www.pefc.org). Please let us know when you order if you have particular sourcing requirements.





---

## Showrooms

---

### Broadleaf Bath

134 - 136 Walcot Street  
BA1 5BG  
Tel: 01225 463 464  
bath@broadleaftimber.com

---

### Broadleaf Cardiff

71 Eastgate, Cowbridge  
CF71 7AB  
Tel: 01446 771 375  
cardiff@broadleaftimber.com

---

### Broadleaf Cheltenham

The Courtyard, Montpellier  
GL50 1SR  
Tel: 01242 252 202  
cheltenham@broadleaftimber.com

---

### Broadleaf Henley

13 Reading Road  
RG9 1AB  
Tel: 01491 411 444  
henley@broadleaftimber.com

---

### Broadleaf Llandeilo

7 King Street  
SA19 6BA  
Tel: 01558 822 882  
llandeilo@broadleaftimber.com

---

### Broadleaf London

715 Fulham Road  
SW6 5UL  
Tel: 0207 371 0088  
london@broadleaftimber.com

---

### Broadleaf Eymet (SW France)

12 Rue du Veau  
24500 Eymet  
Tel: 00 33 (0) 5 53 22 46 84  
eymet@broadleaftimber.com

---

### Broadleaf Head Office and Design

Cil Yr Ychen Industrial Estate  
LLandybie SA18 3JG  
Tel: 01269 851 910  
sales@broadleaftimber.com

---

## Stockists

---

### Broadleaf Aberdeen

@ Treehouse  
Midmar, Aberdeenshire  
AB51 7NB  
Tel: 01330 830 101  
aberdeen@broadleaftimber.com

---

### Broadleaf Dublin

@ Tilestyle  
Ballymount Retail Centre  
Ballymount Road Upper  
Dublin 24  
Tel: 00 353 1 855 5200  
dublin@broadleaftimber.com