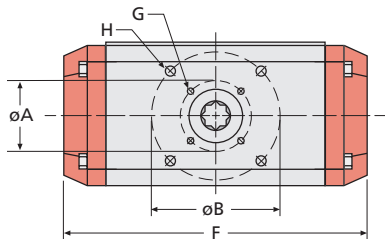
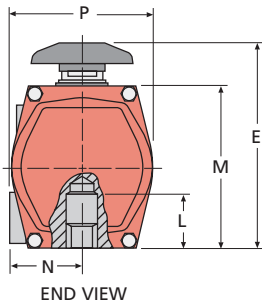
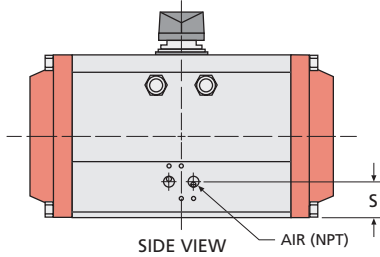
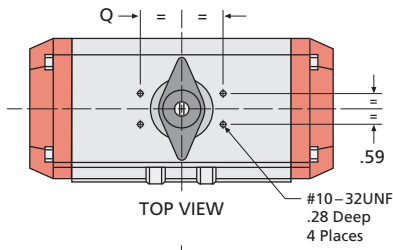
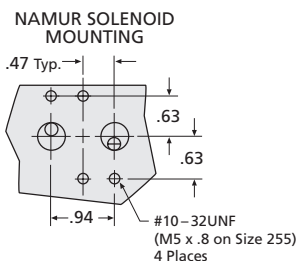
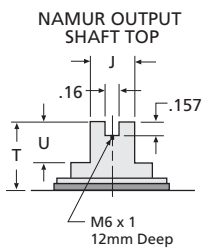


Double Acting/Spring Return



ISO 5211 ACTUATOR MOUNTING PATTERN



AUTOMATOR SERIES DAB / SRB DIMENSIONS

| SIZE | 48 **Double Acting | 63 | 83 | 93 | 119 | 128 | 160 | 210 | 255B |
|----------|-----------------------|---------------|---------------|---------------|---------------|---------------|--------------|---------------|--------------|
| AIR NPT | 1/8 | 1/4 | 1/4 | 1/4 | 1/4 | 1/4 | 1/4 | 1/4 | 1/4 |
| A | 1.42 | 1.97 | 1.97 | 1.97 | 2.76 | 2.76 | — | 4.92 | 6.50 |
| ISO "F"† | F 03 | F 05 | F 05 | F 05 | F 07 | F 07 | — | F 12 | F 16 |
| B | 1.97 | 2.76 | 2.76 | 2.76 | 4.92 | 4.92 | 4.92 | 6.50 | 7.87x4.72 |
| ISO "F"† | F 05 | F 07 | F 07 | F 07 | F 12 | F 12 | F 12 | F 16 | Rect |
| C | .71 | .71 | .87 | .87 | 1.42 | 1.42 | 1.42 | 2.37 | 2.84 |
| D | .55 | .55 | .67 | .67 | 1.06 | 1.06 | 1.06 | 1.81 | 2.17 |
| E | 3.88 | 4.53 | 5.43 | 5.78 | 7.28 | 8.09 | 9.36 | 11.45 | 13.35 |
| F | 4.00 | 5.58 | 7.40 | 9.10 | 12.40 | 12.81 | 15.54 | 17.80 | 26.70 |
| G (UNC) | 10-32 x .23 | 1/4-20 x .32 | 1/4-20 x .32 | 1/4-20 x .32 | 5/16-18 x .46 | 5/16-18 x .46 | — | 1/2-13 x .78 | M16x2 x 28mm |
| H (UNC) | 1/4-20 x .25 | 5/16-18 x .40 | 5/16-18 x .40 | 5/16-18 x .40 | 1/2-13 x .69 | 1/2-13 x .69 | 1/2-13 x .75 | 5/8-11 x 1.11 | M16x2 x 28mm |
| J | .38 | .38 | .50 | .50 | 1.12 | 1.12 | 1.12 | 1.12 | 1.12 |
| L | .70 | 1.38 | 1.46 | 1.46 | 2.20 | 2.20 | 2.20 | 2.76 | 4.25 |
| M | 2.50 | 3.46 | 4.27 | 4.61 | 5.52 | 6.32 | 7.80 | 10.04 | 11.89 |
| N | 1.60 | 1.72 | 2.02 | 2.47 | 2.78 | 2.88 | 3.07 | 4.25 | 4.75 |
| P | 2.78 | 3.11 | 3.83 | 4.44 | 5.15 | 5.58 | 6.82 | 8.83 | 10.75 |
| Q | 3.15 | 3.15 | 3.15 | 3.15 | 3.15 | 3.15 | 5.12 | 5.12 | 5.12 |
| S | 1.25 | .89 | .89 | 1.32 | 1.64 | 1.64 | 1.39 | 1.44 | 1.50 |
| T | 1.10* | .79 | .79 | .79 | .79 | .79 | 1.18 | 1.18 | 1.18 |
| U | .47 | .47 | .47 | .47 | .47 | .47 | .75 | .75 | .75 |

Note: Double Acting and Spring Return actuators have the same overall dimensions.

* Size 48 has a T dimension of .79 with use of NAMUR top plate.

**For Spring Return dimensions for size 48, please consult factory.

† ISO "F" means mounting flange-drilling pattern.

Actuator Speeds

| SIZE | 48 | 63 | 83 | 93 | 119 | 128 | 160 | 210 | 255 |
|------------------------------|-----|-----|-----|-----|-----|-----|-----|-----|-------|
| Open Stroke/ Close Stroke | 1/4 | 1/4 | 1/4 | 1/4 | 1/2 | 1/2 | 1 | 2 | 2 3/4 |

Times are in seconds, at 80 PSIG with 6ft. tubing, internal diameter approximately 1/4".

Actuator Weights

| SIZE | 48 | 63 | 83 | 93 | 119 | 128 | 160 | 210 | 255 |
|------|-----|-----|-----|------|------|------|------|------|-------|
| DAB | 1.8 | 3.4 | 6.1 | 8.4 | 16.4 | 20.9 | 38.1 | 65.0 | 144.0 |
| SRB | 2.4 | 4.1 | 7.9 | 10.8 | 21.7 | 27.3 | 52.6 | 95.3 | 192.6 |

Weights are in lbs. Spring Return unit weights are with full set of springs per piston.

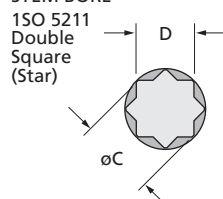
Actuator Volumes (Ins³)

| SIZE | 48 | 63 | 83 | 93 | 119 | 128 | 160 | 210 | 255 |
|-------------------|-----|------|------|------|------|-------|-------|-------|-------|
| Counter-clockwise | 5.7 | 9.6 | 24.8 | 34.8 | 73.8 | 96.7 | 187.5 | 360.0 | 750.0 |
| Clockwise | 4.8 | 13.4 | 32.6 | 45.9 | 95.5 | 130.8 | 259.6 | 450.0 | 900.0 |

Counter-clockwise: Air volume in cubic inches required to push pistons apart, full travel.

Clockwise: Air volume in cubic inches required to push pistons together, full travel.

STEM BORE



STANDARD MATERIALS

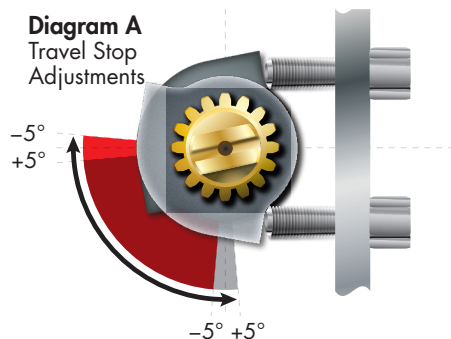
| | |
|----------------------------|--|
| Body | Extruded aluminum alloy, anodized |
| End Caps | Die cast aluminum alloy with corrosion resistant polyester coating |
| Pistons | Die cast aluminum alloy |
| Output Shaft/Pinion | Carbon Steel, zinc plated |
| Travel Stop | Alloy Steel |
| Shaft Bearings | Acetal |
| Piston Guides | Acetal |
| Fasteners | Stainless Steel |
| Springs | Spring Steel, protective coating |
| O-Ring Seals | Buna-N |
| Options | Polyester coated body exterior Electroless Nickel plated body exterior Hard Anodized body exterior Stainless Steel pinion |

ACTUATOR COMPONENTS

| Item | Qty. | Description |
|------|---------|-----------------------------|
| 1 | 1 | Body |
| 2 | 2 | Piston |
| 3 | 1 | Pinion |
| 4 | 2 | End Cap |
| 5* | 12 max. | Spring Cartridge Assembly |
| 6 | 1 | Upper Bearing |
| 7 | 1 | Lower Bearing |
| 8 | 1 | Retaining Ring |
| 9 | 1 | Nylon Washer |
| 10 | 2 | Acetal-Bearing Pad |
| 11 | 2 | Acetal-Guide Ring |
| 12 | 2 | Stop Nut |
| 13 | 2 | Travel Stop Adjusting Screw |
| 14 | 2 | O-Ring-Travel Stop |
| 15 | 1 | Acetal Spacer |
| 16 | 1 | Travel Stop |
| 17 | 8 | Hex Head Cap Screw |
| 18 | 8 | Lock Washer |
| 19 | 2 | O-Ring-Piston |
| 20 | 2 | O-Ring-End Cap |
| 21 | 1 | O-Ring-Shaft-Top |
| 22 | 1 | O-Ring-Shaft-Bottom |
| 23 | 1 | Indicator Pointer |
| 24 | 1 | Indicator Pointer Screw |

*Not included in Double Acting unit.

Diagram A
 Travel Stop
 Adjustments



SPECIFICATIONS

The actuator shall be pneumatically operated and must travel a minimum of 90° in each direction and must be able to overtravel at 3% in each direction past 90°. The actuator shall be totally enclosed and contained in a single enclosure. All pneumatic passage ways must be integral to the actuator housing so as to eliminate the need for external tubing. Actuator shall be rack and pinion design, and the output torque shall be linear throughout travel. Actuator shall be provided with pistons that have acetal piston guides and rings thus greatly extending the life of the actuator and reducing friction to the minimum. Actuator must be supplied with two independent travel stop adjustment, the 0° and 90° travel positions have travel adjustments of +5° to -5° (see Diagram A below). The actuator shall be provided with mechanical visual position indicator, and the indicator must be able to be removed easily thus exposing the output shaft for use of manually overriding the actuator when needed. The output shaft and pinion must be of one piece and must be manufactured out of hardened alloy steel and zinc plated for corrosion protection. Actuator shall be able to mount in any position without loss of performance. Actuator housing shall be anodized aluminum and all external fasteners shall be stainless steel. Springs shall be spring steel, coated for corrosion protection. All seals shall be Buna-N and bearings made of lubricated acetal resin. The actuator shall be factory lubricated. Actuator design must have smooth housing lines so it will self-drain. The actuator shall be factory tested to ensure proper operation.

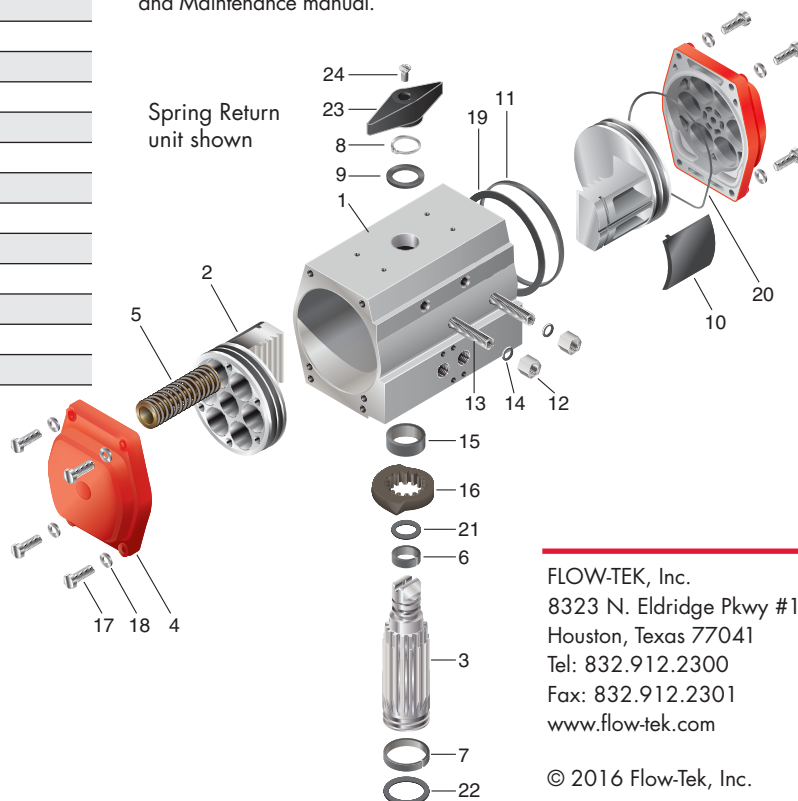
SPRING RETURN SYSTEM

The Spring Return System for fail-safe services must be installed in the same housing as the double acting actuator, with no additional housing extensions required, therefore saving weight and space. The spring system must be supplied as a self-contained spring cartridge system. This is a safety feature that ensures disassembly of the actuator without danger of spring release when end caps are removed. Actuator shall be Flow-Tek Automator Series or approved equal.

SERVICE DATA

Actuators shall be designed for pneumatic operation up to a maximum pressure of 140 PSIG (10 Bar) and for temperature ranges of -40°F (-40°C) to +200°F (+95°C). Filtered air is recommended but not required. All double acting and spring return units shall be suitable for both on-off and throttling applications. Optional units shall be able to operate with other media such as hydraulic oil or water, consult factory for further information.

CAUTION: Before servicing actuators carefully read and understand all the instructions, warnings and cautions in the applicable Installation, Operation and Maintenance manual.



FLOW-TEK, Inc.
 8323 N. Eldridge Pkwy #100
 Houston, Texas 77041
 Tel: 832.912.2300
 Fax: 832.912.2301
 www.flow-tek.com

© 2016 Flow-Tek, Inc.