

## CLIPPER GROUP WAREHOUSE, NORTHAMPTON

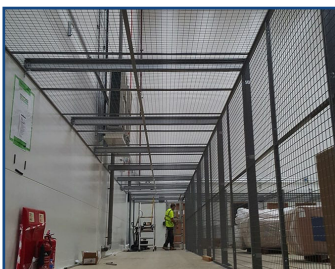
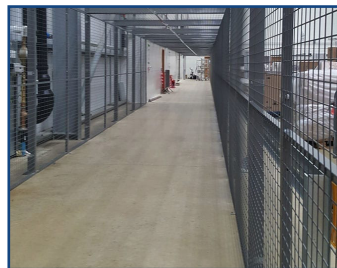
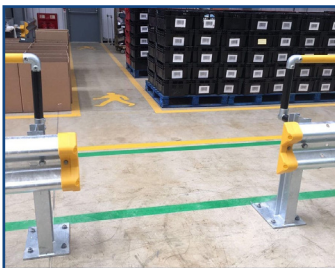
### OVERVIEW

Clipper Group provides warehousing, distribution and logistics for multiple retail and high value brands. Providing services for many brands – large and small – across the UK, it is essential their operations perform with speed and accuracy, whilst providing protection and security to the people and the goods that pass through their doors.



### THE CHALLENGE

To create a system that enables the workforce to navigate through the building safely, securely and efficiently. We had to provide a solution that fulfilled the security requirement, to protect the high value goods that are on site. We had to ensure pedestrian safety, without disturbing the vehicle traffic and operations.



### THE SOLUTION

The first thing we looked at was identifying where there could be 'natural' break points in the pedestrian routes for traffic to pass through safely, to keep all traffic moving – pedestrians and vehicles.

From doing this, we implemented a bespoke system for Clipper, which included:

- A secure cage walkway – a mesh, walkway system that filtered staff from point A to point B (security check)
- Barriers to keep the pedestrian routes safe from the trucking routes.
- Integrated natural break points, with pedestrian gates, for traffic to pass safely through without interrupting pedestrian traffic flow.

### THE RESULT

In place at Clipper, we now have a high quality, sustainable and highly visible safety traffic solution, which ultimately keeps pedestrians safe. With the added security measures, it also ensures that the relevant security system and processes are in place to protect their valuable goods.