

Ilily



boss

Lily



Combining maximum support and ergonomic excellence, Lily delivers an aesthetically satisfying task chair that not only looks striking but provides a superior level of comfort.

Lily is available as a plastic back, fully upholstered back or with a mesh-back option.

Lily with a plastic back is durable and has been designed for simplicity with responsible end-of-life disassembly. This version offers maximum comfort and exceptional value for money.

Lily encompasses easy to reach adjustable levers with highly visible graphics.

## Lily upholstered back



Lily has successfully raised the benchmark in task chair seating design. The distinctive combination of precision engineering and flexible control make Lily an intuitive chair that can easily be adjusted by the individual.

The fully upholstered version, which is available as both a task and cashier chair, demonstrates Boss Design's expertise in upholstery and engineering to ensure longevity in the workplace and to reduce the overall cost of ownership.

## Lily mesh-back



The Lily range also includes an innovative mesh-back version, which offers maximum flexibility and a superior level of comfort.

The mesh-back incorporates the latest design and materials technology to deliver a chair with a robust steel rod frame and polyester knitted back.

The mesh-back features a twin-tension knit in the lumbar region to ensure maximum support.

The adaptable nature of the mesh material means that the back can be specified in a variety of colours to match or contrast with the upholstered seat.

## mesh-back visitor chair



The Lily task chair range may be complemented with a mesh-back or fully upholstered cantilever visitor chair. This visitor chair neatly stacks four high with a moulded stacking buffer to create a stable and secure angle.



The mesh-back visitor chair looks stylish and offers unrivalled flexibility. The twin-tension knit in the lumbar region ensures an exceptional level of comfort.

## fully upholstered visitor chair



The frames of both visitor chairs can be specified as painted silver or black, or in chrome as an option. Optional glides are available to protect hard or polished floors.



The upholstered visitor chair features CMHR foam as standard throughout the seat and back and has a plywood mono-shell construction to ensure maximum flexibility.

# Lily mesh back options

The Lily mesh-back task chair is available in ten mesh-back colour options as standard.

White mesh is available on a white frame, light grey and dark grey mesh are available on a grey frame and all other mesh-back colours are available on a black frame as standard.

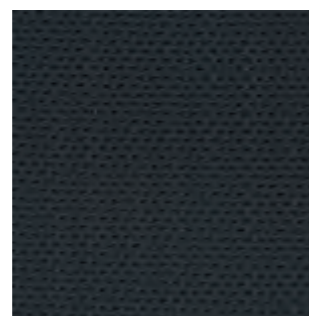
Due to the polyester yarn construction of the mesh-back other colour choices are available upon request and to special order.



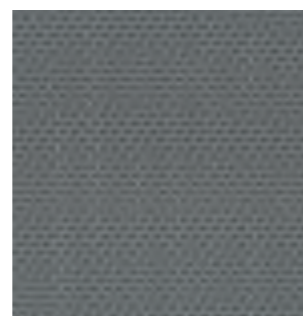
Black



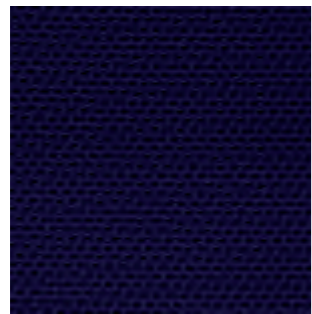
White



Dark Grey



Light Grey



Midnight Blue



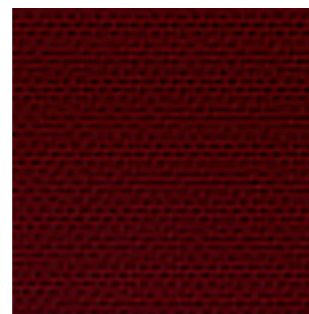
Cobalt Blue



Petrol Blue



Red



Bordeaux



Green

## Lighter on the environment

We are passionate about caring for the environment. The Lily range has been designed with the needs of the user and the environment in mind.

Presented with The Queen's Award for Sustainable Development 2009, FSC accredited and a carbon neutral company, we prefer to work with like minded suppliers who use raw materials and components obtained only from ethical sources.

Uncompromising on quality, we purchase materials with a high recycled content wherever possible. We work closely with local suppliers and constantly review our global logistics operation to ensure we minimise any negative impact on the environment.

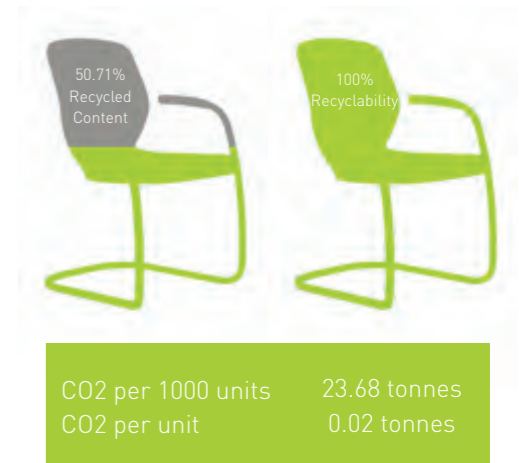
We actively monitor the carbon footprint of our products throughout their life-cycle to ensure they meet Boss Design's environmental policy.

We partner with Greenworks to deliver our award winning end-of-life product management process. We arrange for our client's old furniture items to be collected and redistributed to charities and other good causes. Alternatively, unsuitable furniture is always broken down and recycled.

## Lily and the environment

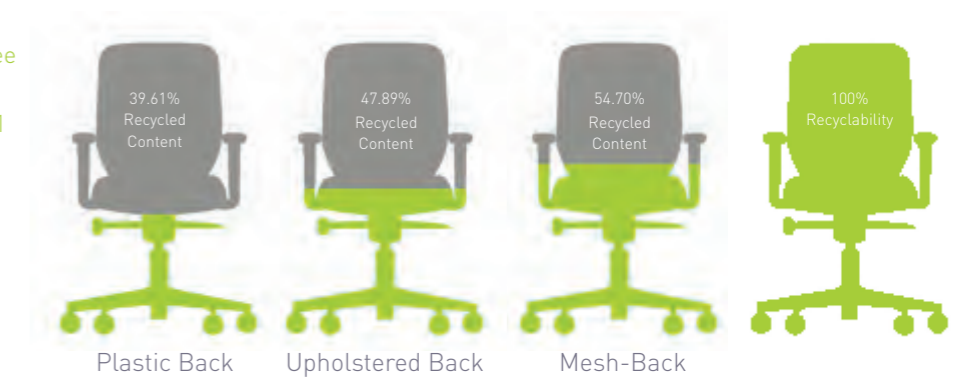
The Lily range has been designed to minimise any negative effect on the environment. During its life, components such as the upholstery and arms can be easily removed and replaced if required. At the end of its life Lily can simply be disassembled so that each component can be appropriately recycled.

The Lily mesh-back polyester material is constructed from 100% recycled yarn.



## Lily ecological credentials

Returnable Packaging CFC & HCFC Free  
 Carbon Neutral Yes  
 Climate Neutral BS EN ISO 14001



Statistics represent Lily chairs with arms and nylon base

CO2 per 1000 units	65.71 tonnes	55.13 tonnes	50.62 tonnes
CO2 per unit	0.07 tonnes	0.06 tonnes	0.05 tonnes





## features

- 1) The upholstery on the seat and back of Lily can be easily removed and changed, therefore extending the product's life and significantly reducing the cost of ownership. Moulded CMHR foams ensure maximum comfort for the user and durability for the product.
- 2) The mesh-back option provides a flexible and breathable option for maximum support.
- 3) Arms can be easily adjusted in height (100mm) and are supplied with soft-touch polyurethane pads, which offer the benefit of increased comfort along with a high damage resistance. The polished aluminium arm option is supplied with sliding pads.
- 4) Arms can be supplied with width adjustment (35mm each side) to increase the suitability of the chair for a wider percentage of the corporate population.
- 5) The tension of the synchronised mechanism can be easily adjusted from the seated position using the hand-wheel on the right-hand-side of the chair. Lily incorporates a very wide range of tension adjustment to ensure that it is suitable for users from 50 to over 120kg.
- 6) The seat height is adjusted (110mm) by lifting the paddle on the right-hand-side of the chair, allowing the user to achieve the optimum position in relation to their desk and maintain a healthy posture throughout the day.
- 7) The seat is a generous size but the depth of the seat can be increased further (by up to 55mm) by pressing the button found under the right-hand-side of the seat. The waterfall edge on the front of the seat ensures maximum support and unrestricted circulation.
- 8) The synchronised mechanism can be locked in any one of five positions by using the paddle located on the right-hand-side of the chair. Alternatively, the chair can be left unlocked to promote movement in the user to help maintain a healthy posture and circulation.
- 9) 65mm diameter castors provide maximum durability and ease of movement.
- 10) All of the information referring to the benefits and adjustments of this product are featured in the user guide, which can be found in the slot under the left-hand-side of the seat.

## ergonomics excellence

Ergonomically designed workplaces, equipment and jobs aim to modify the environment to meet people's needs. By providing a wide range of adjustments, Boss task seating is designed to fit the vast majority of the population. Lily has a wide range of adjustment controls on the chair that are both easy to operate and highly visible from a seated position.



Mesh-back option



Detail showing the left hand side of the chair.



Detail showing the right hand side of the chair.

# Lily



## 1) back tilt

**WHY?** It is important to allow your body to remain dynamic with the chair in it's unlocked position, because a dynamic posture promotes good circulation and a healthy spine. The tension of the chair should be adjusted to suit your own weight so that your body moves freely and harmoniously with the chair rather than having to fight against it.

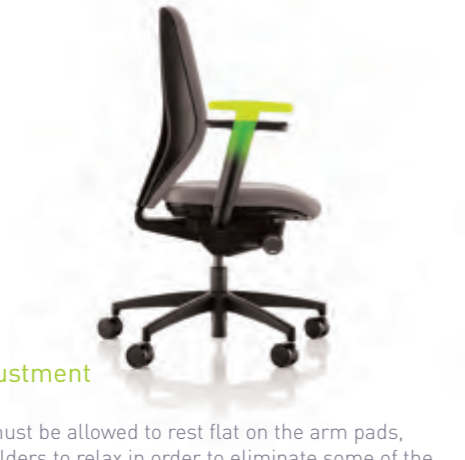
**HOW?** To unlock the back of the chair and allow it to move with your body, pull up the paddle found under the left hand side of your seat. To adjust the tension to suit your own weight pull out the knob under the right hand side of the seat and grasping it with an over-hand grip, rotate it forward to increase the tension and back to decrease the tension.



## 3) seat height

**WHY?** To keep your thighs parallel to the floor and your elbows at a similar height to the keyboard. This helps to maintain a healthy posture with good circulation.

**How?** Lift the paddle located under the right hand side of your seat whilst lifting your weight out of the chair to allow the seat to raise to the desired height. To lower the height, lift the paddle again leaving your body weight on the seat.



## 5) arm pad adjustment

**WHY?** Forearms must be allowed to rest flat on the arm pads, allowing your shoulders to relax in order to eliminate some of the tension in your upper body.

**HOW?** Lift the buttons on the outside of the arm risers to raise and lower the arms. Ensure that both arm pads are the same height. The width can be adjusted using the 'quick-release' handles under the arm supports.



## 2) back height

**WHY?** It is important that the chair gives you support through the whole of your back. To do this the lumbar support on the chair must be aligned with your own lumbar region.

**HOW?** Lean forward and grasp the back on either side. Pull up until the pronounced lumbar support of the chair is aligned with your own lumbar region, which is just below your waist. The back will stop in any one of four positions.

N.B. Lily mesh-back chair does not have a height adjustable back.



## 4) seat slide

**WHY?** If your seat depth is too long you could compromise the circulation in your lower legs as well as being unable to make effective use of the back rest and will adopt a posture with a rounded spine. If it is too short, you will increase the pressure on your thighs. Ideally the front edge of the seat should be 5cm from the back of your calves.

**How?** Push the button on the right hand side of the seat. Keep your weight on the seat pad and move forward. Release the button to lock the seat.

Lily's host of innovative design features, bespoke tooling and the integration of industry-leading adjustment mechanisms make this a chair that is setting new industry standards for ergonomics, comfort, durability and flexibility.

# Lily

plastic back



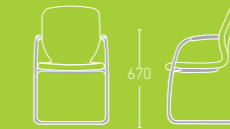
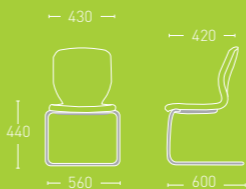
mesh-back

fully upholstered back



fully upholstered cashier

cantilever fully upholstered non-arm



cantilever fully upholstered with arms

mesh-back cantilever non arm



mesh-back cantilever with arms

## specifications

standard feature  optional feature

### task chair features

- Thoracic support
- Synchronised mechanism
- A-Synchronised mechanism
- Height adjustable arms
- Width adjustable arms
- Sliding arm pads
- Rotating arm pads
- Polished aluminium arms
- Sliding seat
- Black nylon base
- Painted black or silver base
- Polished aluminium base
- Black 65mm castors
- Silver 65mm castors

### cantilever visitor chair features

- Black frame
- Silver RAL 9006 frame
- Polished frame
- PU arm sleeve
- Glides

The Lily task chair is accredited to BS EN 5459 : Part 2 : 2000  
The Lily cantilever chair is accredited to BS EN 13761



**Boss Design Ltd**

[www.boss-design.com](http://www.boss-design.com)  
[sales@boss-design.co.uk](mailto:sales@boss-design.co.uk)

**Head Office**

Boss Drive  
Dudley  
DY2 8SZ  
United Kingdom

T: +44 (0) 1384 455 570  
F: +44 (0) 1384 241 628

**London Showroom**

7 Clerkenwell Road  
London  
EC1M 5PA  
United Kingdom

T: +44 (0) 20 7253 0364  
F: +44 (0) 20 7608 0160