

PRODUCT

Datasheet PD05C

Performance certified
steel door sets



Boothindustries BELMONT

Level 3 Security & Fire Door with Flush Edge Leaf

PERFORMANCE

LPS1175: Security tested to SR3 level
EN1634-1: Fire rated up to E120 (2 hours integrity)

LEAVES

- 61mm thick, twin tray cassette with rebated edge
- 1.5mm thick galvanized steel skins
- Internal attack barrier
- Fully bonded structural honeycomb core

A 45mm thick, flush edge honeycomb BOOTH-FD leaf encapsulated within an insulated cassette and additional, internal stiffening.

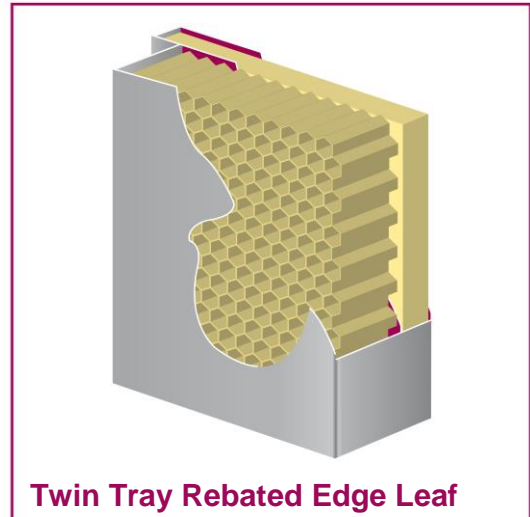
Heavy duty mortised security locking systems. The hinging edge is reinforced by steel hinge mounting plates welded within the leaf, and the lock mechanism is installed within an inner enclosure to facilitate removal for planned maintenance or replacement.

FRAMES

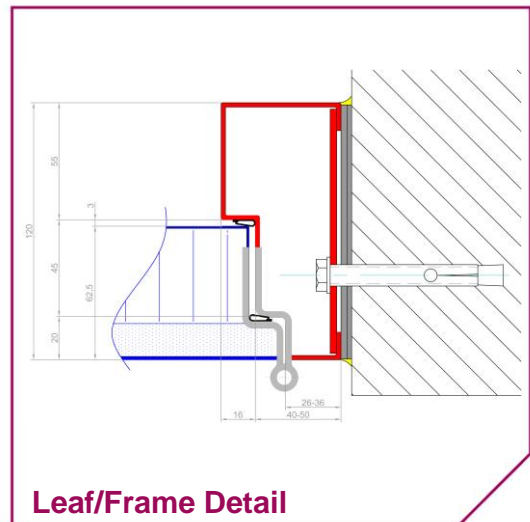
- 2mm thick galvanized steel folded to form a special 100mm single rebate profile, forming a flush face with the leaf

Headers are profiled to form a smooth butt joint with the vertical jambs and fully welded. Vertical jambs are reinforced with 3mm gussets and 5mm thick steel plates at the hinge and wall fixing positions.

A shallow depth 3mm steel threshold with optional integral seals is welded to the base of the verticals to form a 4-sided frame.



Twin Tray Rebated Edge Leaf

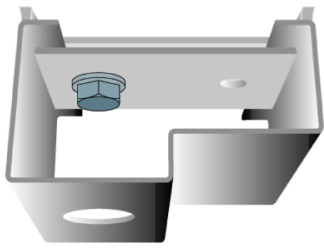


Leaf/Frame Detail

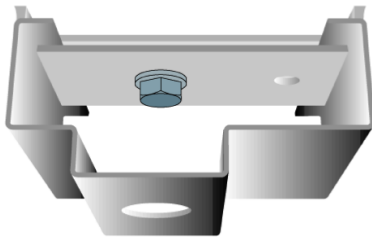
OIL & GAS | NUCLEAR | DEFENCE | SECURITY, BALLISTIC & ANTI-TERROR
TUNNELS & STATIONS | PETROCHEMICAL
INDUSTRIAL | ARCHITECTURAL | AVIATION | FLOOD DEFENCE

Booth Industries a member of the Redhall Group plc, a leading niche engineering support services group operating in the energy, defence and process sectors.

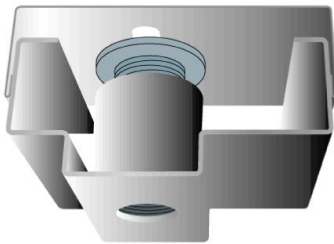
A Redhall Group Company



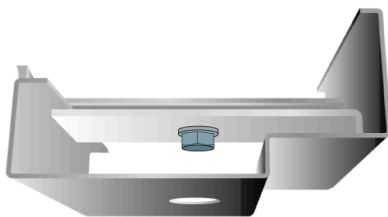
PD06-02 Single Rebate



PD06-01 Double Rebate



PD06-05 Adjustable Double Rebate



PD06-09 UK 'Corner' Single Rebate

Ironmongery

BELMONT door sets can be provided with the following standard ironmongery items:

LOCKING SYSTEMS:

Heavy duty, high security single and multi-point systems mortised into the door leaf.

HINGES:

Grade 14, 114x100mm stainless steel, high performance butt hinges with extended dog bolt security pins, 21mm cranks and polymer bearings tested to 1,000,000 cycles. Totally maintenance free; no lubrication needed.

OVERHEAD CLOSERS:

Heavy duty overhead closers in a silver finish.

PANIC BOLTS:

Optional heavy duty, three-point systems.

HANDLES:

Stainless steel lever and pull handles, and push plates.

FINISHES:

PPC finishes as standard in any BS or RAL colour.

Note: Whatever ironmongery is selected all items are normally factory fitted, requiring no additional assembly work on site.

This datasheet is issued for general information only and is not intended as a substitute for information contained in the relevant British Standards. As Standards are under constant re-appraisal, it is essential that the full document be consulted.

Boothindustries

PO Box 50
Nelson Street
Bolton
United Kingdom
BL3 2AP

Telephone:
+44 (0) 1204 366 333

Facsimile:
+44 (0) 1204 380 888

Email:
enquiries@boothcommercial.com

Website:
www.booth-industries.co.uk

A Redhall Group Company



Booth Industries a member of the Redhall Group plc, a leading niche engineering support services group operating in the energy, defence and process sectors.