

PRODUCT

Datasheet PD02A

Performance certified
steel door sets



Boothindustries

Booth-FD

Fire Integrity Door with Flush Edge

PERFORMANCE

Tested to:

BS EN1634-1: Fire rated up to E240 (4 hours integrity)

EN1191: 200,000 repeated opening & closing cycles

BS6375-1: Weather tightness

LEAVES

- 45mm thick, twin tray with flush edges
- 1, 1.2 & 1.5mm thick galvanized steel skins
- Fully bonded structural honeycomb core

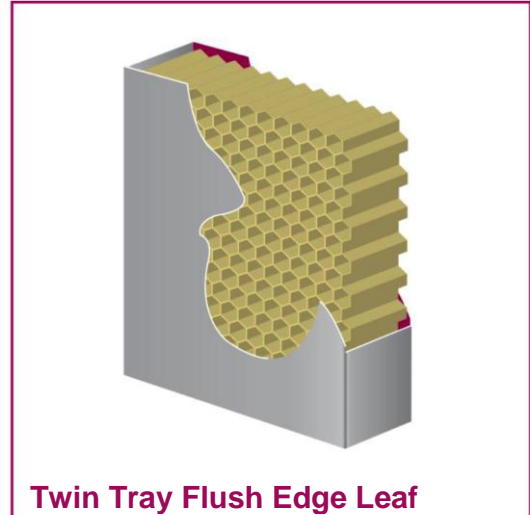
The vertical edges of the skins are folded to create full height Interlocking seam for increased panel strength and rigidity.

The void between the skins is in-filled with a honeycomb core material, selected for its compression and torsional load performance. The hinging edge is reinforced by steel hinge mounting plates welded within the leaf, and the lock mechanism is installed within an inner enclosure to facilitate removal for future maintenance or replacement.

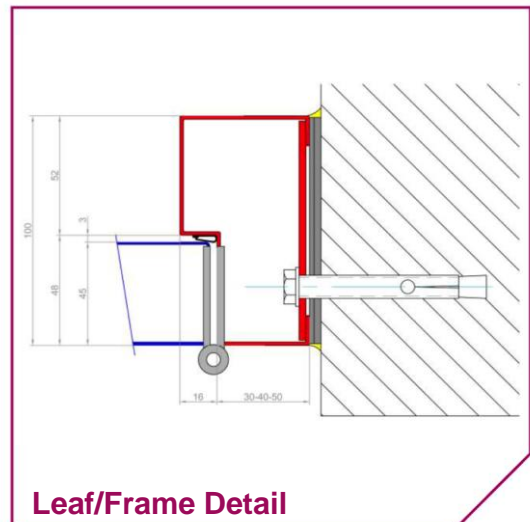
FRAMES

- 1.5mm thick galvanized steel folded to form a standard 100mm single rebate profile, as shown on Product Datasheet PD06-2.

Headers are profiled to form a smooth butt joint with the vertical jambs using a bolted connection. Vertical jambs are reinforced with 5mm thick steel plates at the hinge and wall fixing positions. Shallow depth extruded aluminium thresholds with integral seals are optional items, along with perimeter tear drop seals in the frame rebates at the verticals and the header.



Twin Tray Flush Edge Leaf

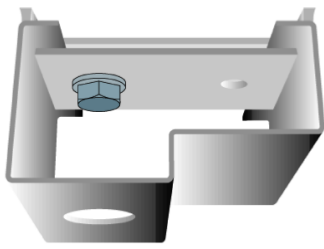


Leaf/Frame Detail

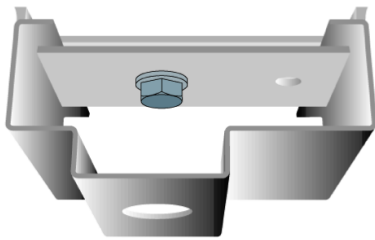
OIL & GAS | NUCLEAR | DEFENCE | SECURITY, BALLISTIC & ANTI-TERROR
TUNNELS & STATIONS | PETROCHEMICAL
INDUSTRIAL | ARCHITECTURAL | AVIATION | FLOOD DEFENCE

Booth Industries a member of the Redhall Group plc, a leading niche engineering support services group operating in the energy, defence and process sectors.

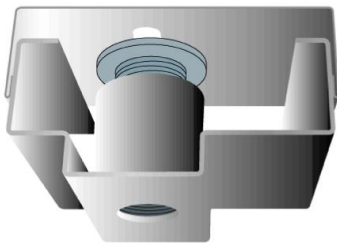
A Redhall Group Company



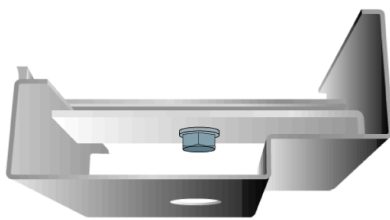
PD06-01 Single Rebate



PD06-02 Double Rebate



PD06-05 Adjustable Double Rebate



PD06-09 UK 'Corner' Single Rebate

Ironmongery

BOOTH-FD door sets can be provided with the following standard ironmongery items:

HINGES:

1• pair Grade 12, 114x100mm stainless steel, high performance, ball bearing butt hinges.

OVERHEAD CLOSERS:

Heavy duty overhead closers with 2-4 strength in a silver finish. Also available with concealed closers.

PANIC BOLTS:

Exidor single and double, vertical rod panic escape systems finished in silver.

Also available with outside access devices with Euro-profile cylinders for access from outside the building.

LOCKS & LATCHES:

DIN standard mortice sash locks, latches and deadlocks. Available with electric strikes.

HANDLES:

Stainless steel lever and pull handles, and push plates.

FINISHES:

PPC finishes as standard in any BS or RAL colour.

This datasheet is issued for general information only and is not intended as a substitute for information contained in the relevant British Standards. As Standards are under constant re-appraisal, it is essential that the full document be consulted.

Boothindustries

PO Box 50
Nelson Street
Bolton
United Kingdom
BL3 2AP

Telephone:
+44 (0) 1204 366 333

Facsimile:
+44 (0) 1204 380 888

Email:
enquiries@boothcommercial.com

Website:
www.booth-industries.co.uk

A Redhall Group Company



Booth Industries a member of the Redhall Group plc, a leading niche engineering support services group operating in the energy, defence and process sectors.

A Redhall Group Company