

Instruction Card

Tourniket Autofolding

(only three-wing)

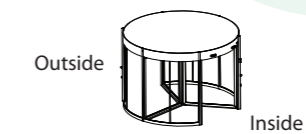
Safety- and Operating instructions

Control panel

Locking devices

Maintenance

Explanation of the symbols

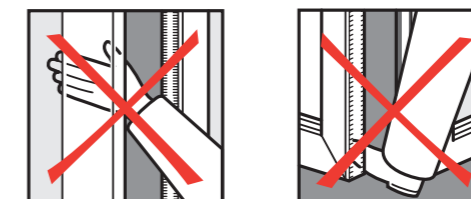


- Door set rotates on normal speed
- Door set stops
- Door set rotates on slow speed
- Door set rotates into restitution
- Door set does not rotate
- Door set rotates manually
- Doorwing folds automatically.
- Doorwing folds back automatically.
- power supply
- No power supply
- Emergency pushbutton
- Disabled pushbutton
- Tourlock 360 locking
- Option

Caution :



- Any children or minors using the product must be supervised by a responsible adult.
- This product should not be considered as a playground. Do not let children play inside or near the door.
- Push doorwing for emergency open position (optional collapsible doorset).
- Running or dashing into a closing door are prohibited.
- In case of broken glass do not use the door. Take all necessary precautions to avoid people coming into contact with sharp edges of the broken glass.



Tourniket Autofolding

Status Indicator



Description of activations and failures	A	B	C	D	E	F	Code
Emergency stop Active	1						32
Top Rail Sensor active		1	1		1		26
Fire alarm active		1		1	1	1	23
Block detection active		1		1		1	21
Safety Rail Bent wall Active		1					16
Safety Rail Door wing Active			1	1	1	1	15
Motion Sensor Failure			1		1		10
Door collapsed				1	1	1	7
Door Locked				1		1	5
End Buffer Safety Active				1			4

Maintenance

- Check daily :**
- Emergency-, safety devices and general operation of the door.
 - Presence of loose parts, sharp edges or broken glass.
 - Safety and contrasting stickers are applied.
 - Lighting; to provide a proper level of illumination inside the door.
 - Floor condition; avoid slipping or tripping hazards and excessive dirt inside the door.
- Weekly :**
- Clean the anodised, powder coated and/or stainless steel surfaces with a wet cloth.
- Monthly :**
- Clean the anodised, powder coated and/or stainless steel surfaces with a wet cloth and a non-aggressive soap. Stainless steel surfaces need to be cleaned according the instruction below, Vacuum clean all the brushes.
- Yearly :**
- The door needs a major maintenance check once a year. This has to be done by Boon Edam or an approved agent. This applies as well for repairs.

Note :

- Make sure maintenance is properly recorded in the Logbook inside the door.

- Caution !**
- Don't use water near the drive-units or control boxes.

- Warning !**
- Switch OFF the power supply of the door during maintenance or other work.

Cleaning Instruction

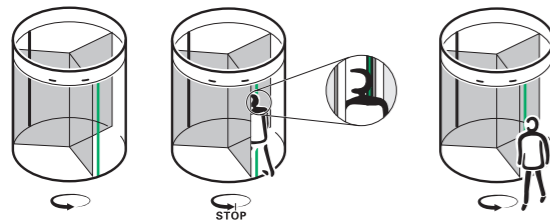
- Sensors :**
- Remove dirt and dust with a wet cloth and dry with a clean soft cloth. Avoid scratching!!

- Stainless steel parts:**
- use sponge to wipe the parts clean and dry with a clean cloth.
 - apply an even spray Inno-x on the surface to be treated or spray it on a clean, dry and soft cloth and apply. Rub off with a clean, dry and soft cloth.

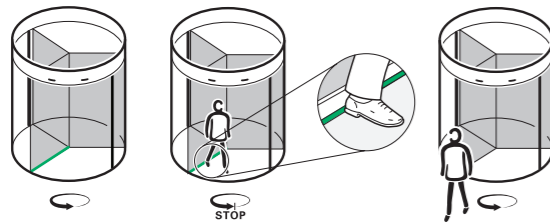
Safety- and Operating instructions

A. The Tourniket safety devices

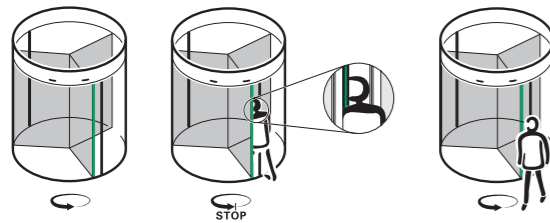
1 Safety Rail Bent wall (SRB)



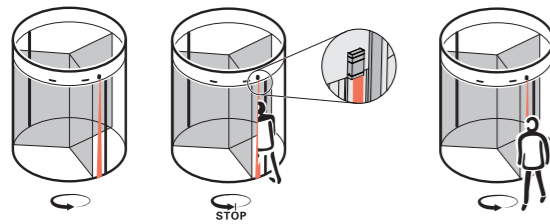
2 Safety Rail Door wing (SRD)



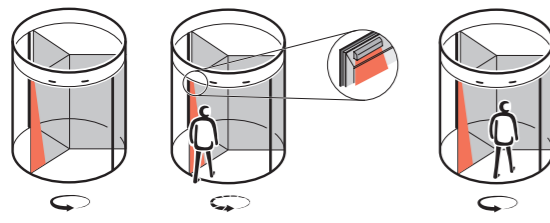
3 Safety Rail Turning wall (SRT)*



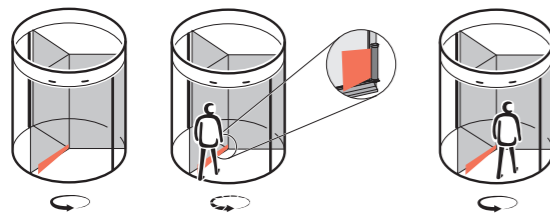
4 End Buffer Sensor (EBS)



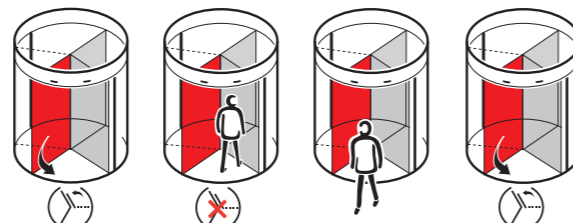
5 Top Rail Sensor (TRS)*



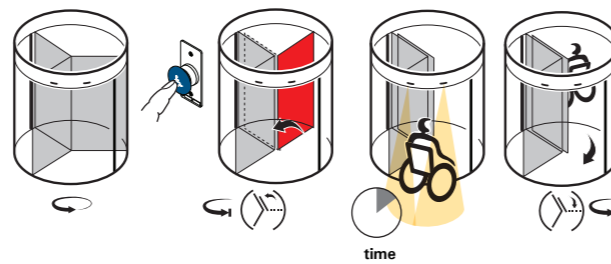
6 Back Stile Sensor (BSS)*



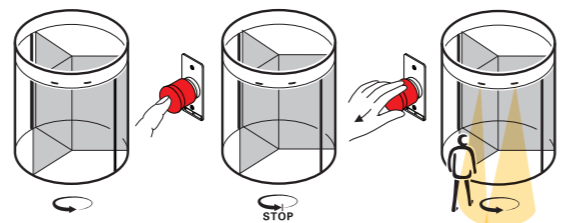
7 Safety Curtain Doorwing (SCD)



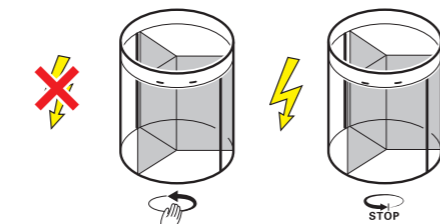
8 Disabled pushbutton/ Autofolding*



9 Emergency pushbutton

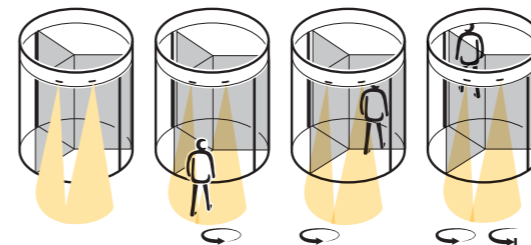


10 Fail-safe

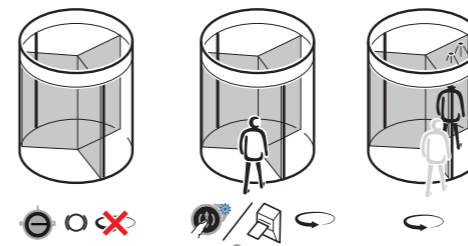


B. The working principles of the Tourniket

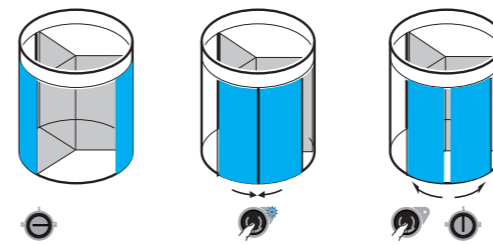
1 Drive unit / PIR (motion detector)



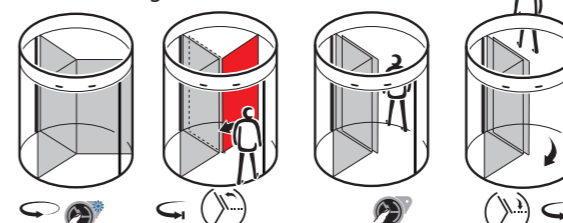
2 Drive unit + Tourlock 360N access control*



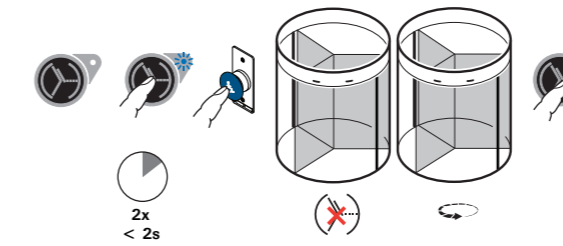
3 Automatic Night Locking Doors*



4 Autofolding



5 Switch off Autofolding



Control panel



- 0 1 2 0 Off mode
- 0 1 2 0 1 Day mode
- 0 1 2 0 2 Night mode
- A B C D E F 3 Failure indicator
- 4 Tourlock
- 5 Pulse in / out
- 6 Autofolding
- 7 Idle speed*
- 8 Automatic Night Locking Doors*