

## Status Indicator



Description of activations and failures	A	B	C	D	E	F	Code
Emergency stop Active	1						32
Top Rail Sensor active		1	1		1		26
Fire alarm active		1		1	1	1	23
Block detection active		1		1		1	21
Safety Rail Bent wall Active		1					16
Safety Rail Door wing Active			1	1	1	1	15
Motion Sensor Failure			1		1		10
Door collapsed				1	1	1	7
Door Locked				1		1	5
End Buffer Safety Active				1			4

## Maintenance

- Check daily :**
- Emergency-, safety devices and general operation of the door.
  - Presence of loose parts, sharp edges or broken glass.
  - Safety and contrasting stickers are applied.
  - Lighting; to provide a proper level of illumination inside the door.
  - Floor condition; avoid slipping or tripping hazards and excessive dirt inside the door.
- Weekly :**
- Clean the anodised, powder coated and/or stainless steel surfaces with a wet cloth.
- Monthly :**
- Clean the anodised, powder coated and/or stainless steel surfaces with a wet cloth and a non-aggressive soap. Stainless steel surfaces need to be cleaned according the instruction below, Vacuum clean all the brushes.
- Yearly :**
- The door needs a major maintenance check once a year. This has to be done by Boon Edam or an approved agent. This applies as well for repairs.
- Note :**
- Make sure maintenance is properly recorded in the Logbook inside the door.

**Caution !**



- Don't use water near the drive-units or control boxes.

**Warning !**



- Switch OFF the power supply of the door during maintenance or other work.

## Cleaning Instruction

- Sensors :**
- Remove dirt and dust with a wet cloth and dry with a clean soft cloth. Avoid scratching!!

**Stainless steel parts:**

- use sponge to wipe the parts clean and dry with a clean cloth.
- apply an even spray Inno-x on the surface to be treated or spray it on a clean, dry and soft cloth and apply. Rub off with a clean, dry and soft cloth.

# Instruction Card

## Tourniket

### Safety- and operating instructions

### Control panel

### Cleaning Instruction

### Status Indicator

### Maintenance

### Explanation of the symbols



Door set stops



Door set rotates on normal speed



Door set rotates on slow speed



Door set rotates into restposition



Door set does not rotate



Door set rotates manually



No power supply



Emergency push button.



Disabled push button.



Emergency open button.



Doorset blocked.



Optional / CE Plus.

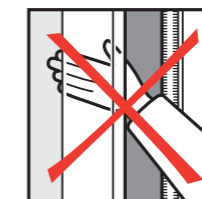


Extra country specific.

**Caution :**



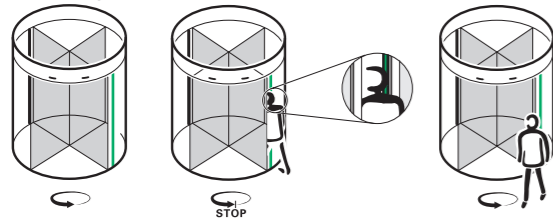
- Any children or minors using the product must be supervised by a responsible adult.
- This product should not be considered as a playground. Do not let children play inside or near the door.
- Push doorwing for emergency open position (optional collapsible doorset).
- Running or dashing into a closing door are prohibited.
- In case of broken glass do not use the door. Take all necessary precautions to avoid people coming into contact with sharp edges of the broken glass.



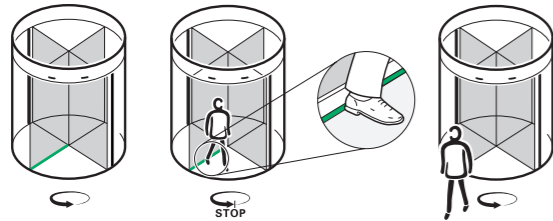
# Safety- and operating instructions

## A. The Tourniket safety devices

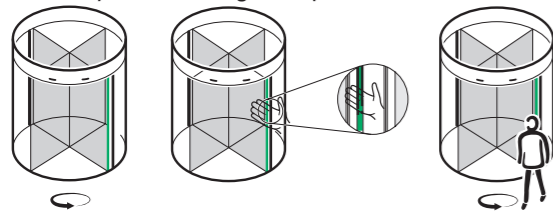
1 Safety Rail Bent wall (SRB)



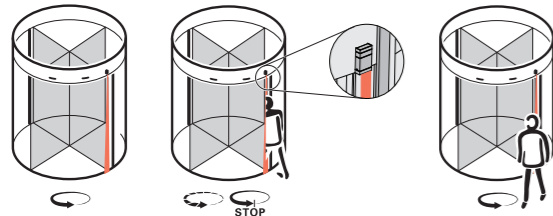
2 Safety Rail Door wing (SRD)



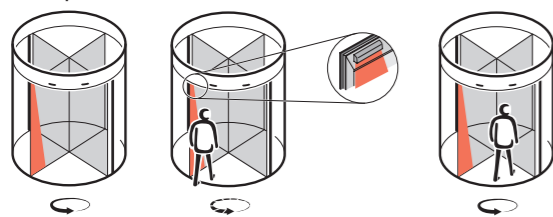
3 Safety Rail Turning wall passive (SRT)



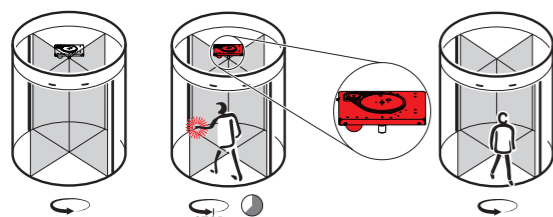
4 End Buffer Sensor (EBS)



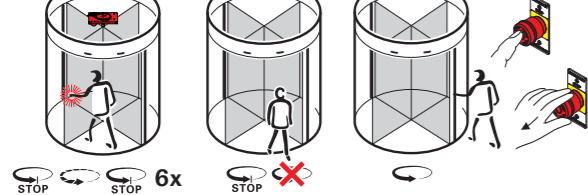
5 Top Rail Sensor (TRS)\*



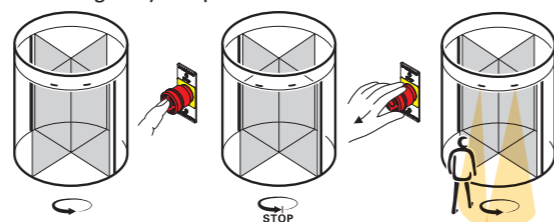
6 Block detection



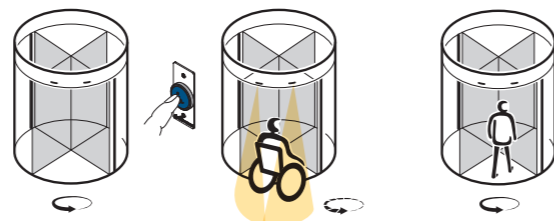
6x



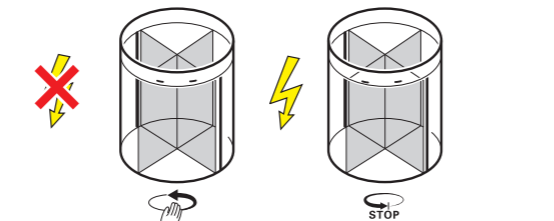
7 Emergency stop button



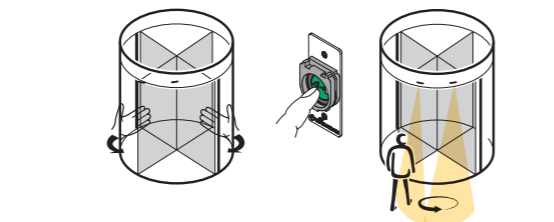
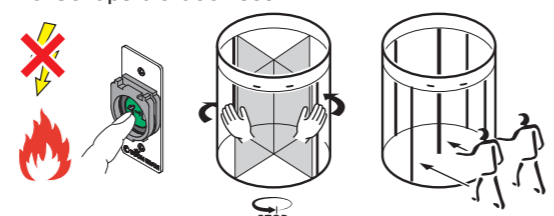
8 Disabled push button\*



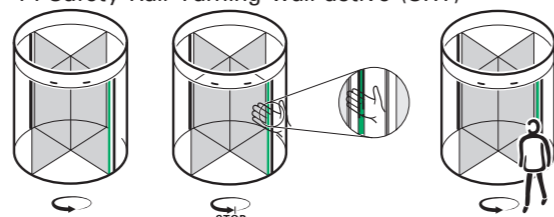
9 Fail-safe\*



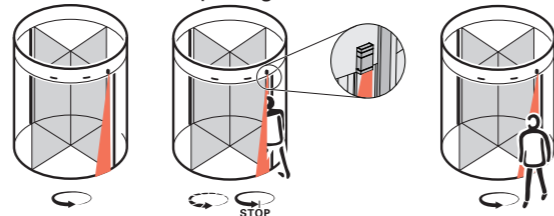
10 Collapsible door set\*



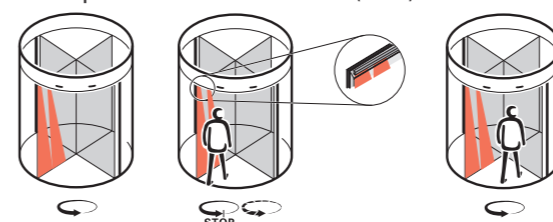
11 Safety Rail Turning wall active (SRT)\*\*



12 Extra Throatopening Sensor (ETS)\*\*

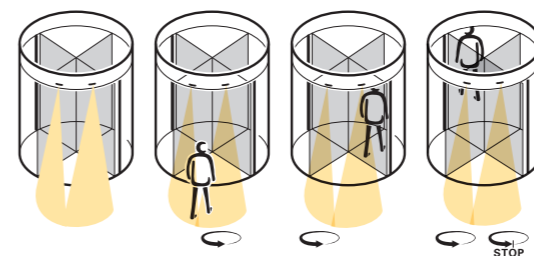


13 Top Rail Sensor extension (TRS)\*\*

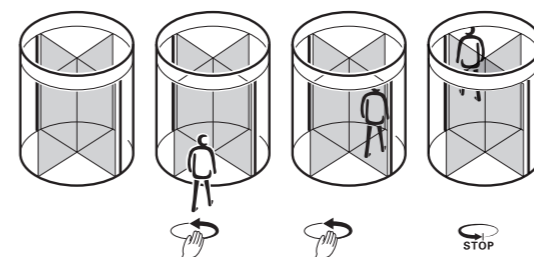


## B. The working principles of the Tourniket

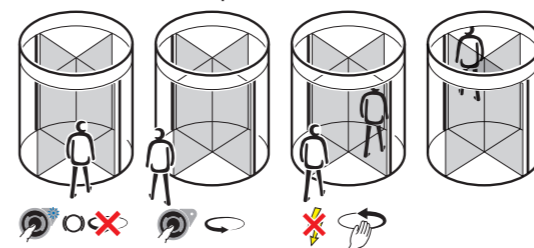
1 Boon-O-Matic / motion detector



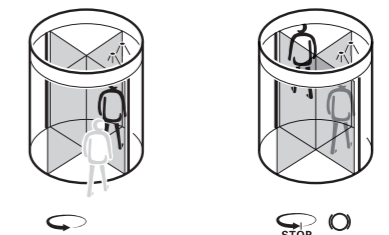
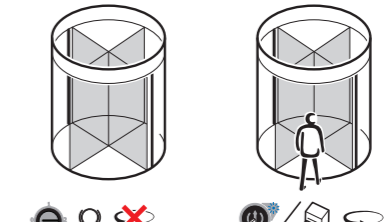
2 Push & Go



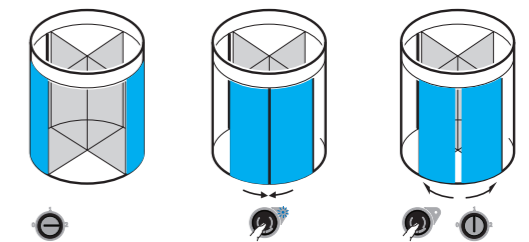
3 Boon-O-Matic / push & Go + Tourlock 360\*



4 Boon-O-Matic + Tourlock 360N access control\*



5 Rond-O-Matic\*



## Control panel

