

Status Indicator




Description of activations and failures	A	B	C	D	E	F	Code
Emergency stop Active	1						32
Top Rail Sensor active		1	1		1		26
Fire alarm active		1		1	1	1	23
Block detection active		1		1		1	21
Safety Rail Bent wall Active		1					16
Safety Rail Door wing Active			1	1	1	1	15
Motion Sensor Failure			1		1		10
Door collapsed				1	1	1	7
Door Locked				1		1	5
End Buffer Safety Active				1			4


Maintenance

- Check daily :**
- Emergency-, safety devices and general operation of the door.
 - Presence of loose parts, sharp edges or broken glass.
 - Safety and contrasting stickers are applied.
 - Lighting; to provide a proper level of illumination inside the door.
 - Floor condition; avoid slipping or tripping hazards and excessive dirt inside the door.
- Weekly :**
- Clean the anodised, powder coated and/or stainless steel surfaces with a wet cloth.
- Monthly :**
- Clean the anodised, powder coated and/or stainless steel surfaces with a wet cloth and a non-aggressive soap. Stainless steel surfaces need to be cleaned according the instruction below, Vacuum clean all the brushes.
- Yearly :**
- The door needs a major maintenance check once a year. This has to be done by Boon Edam or an approved agent. This applies as well for repairs.

Note :

- Make sure maintenance is properly recorded in the Logbook inside the door.

- Caution !** 
- Don't use water near the drive-units or control boxes.

- Warning !** 
- Switch OFF the power supply of the door during maintenance or other work.

Cleaning Instruction

- Sensors :**
- Remove dirt and dust with a wet cloth and dry with a clean soft cloth. Avoid scratching!!

- Stainless steel parts:**
- use sponge to wipe the parts clean and dry with a clean cloth.
 - apply an even spray Inno-x on the surface to be treated or spray it on a clean, dry and soft cloth and apply. Rub off with a clean, dry and soft cloth.

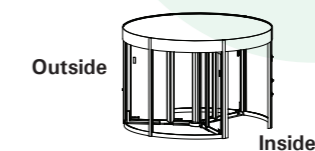
Instruction card














Tournex

Safety -and operating instruction

Control panel
 Status Indicator
 Locking devices
 Maintenance
 Cleaning Instruction

Explanation of the symbols

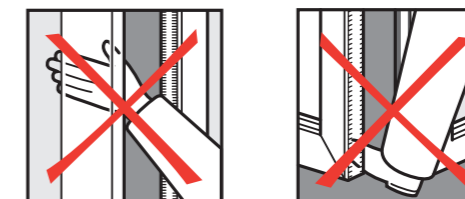


-  Door set rotates on normal speed
-  Door set stops
-  Door set rotates on slow speed
-  Door set rotates into rest position
-  Door set does not rotate
-  Door set rotates manually
-  No power supply
-  Emergency push button.
-  Disabled stop button.
-  Emergency open button.
-  Doorset blocked.
-  Optional / CE Plus.
-  Extra country specific.

Caution :



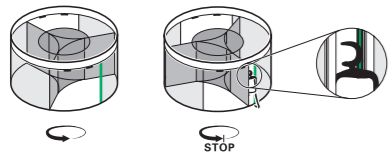
- Any children or minors using the product must be supervised by a responsible adult.
- This product should not be considered as a playground. Do not let children play inside or near the door.
- Push doorwing for emergency open position (optional collapsible doorset).
- Running or dashing into a closing door are prohibited.
- In case of broken glass do not use the door. Take all necessary precautions to avoid people coming into contact with sharp edges of the broken glass.



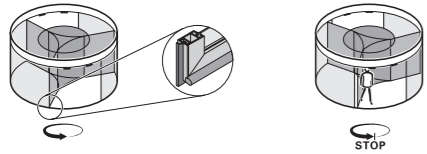
Safety- and operating instructions

A. The Tournex safety devices

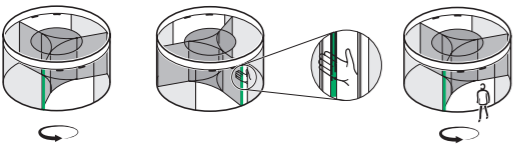
1 Safety Rail Bent wall (SRB).



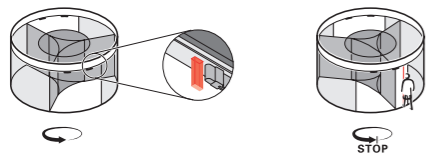
2 Safety Rail Doorwing (SRD).



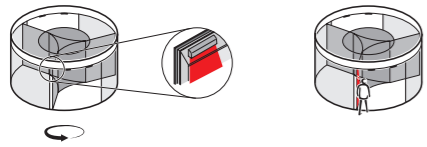
3 Safety Rail Turning wall passive (SRT).



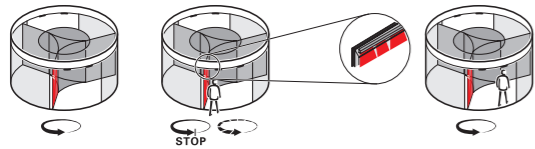
4 End Buffer Sensor (EBS).



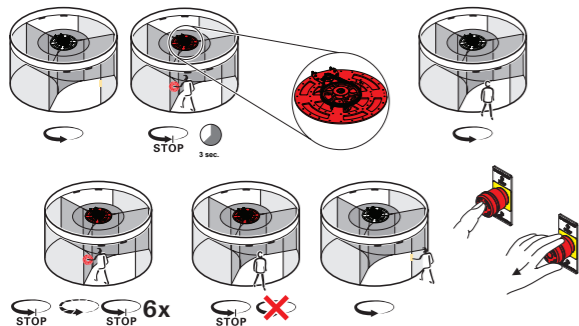
5 Top Rail Sensor (TRS).



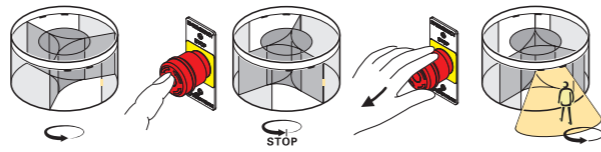
6 Top Rail Sensor Extension (TRS)*



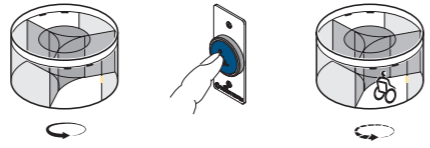
7 Block detection



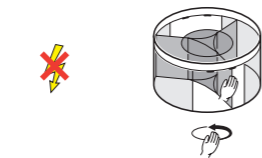
8 Emergency push button inside (outside*)



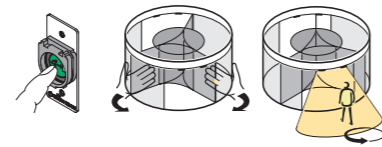
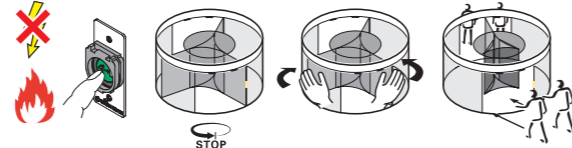
9 Disabled push button*



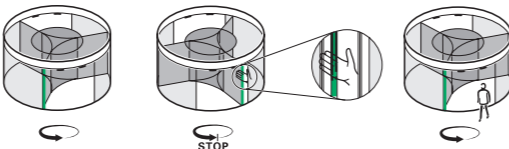
10 Failsafe



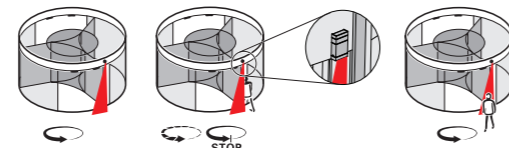
11 Collapsible door set* (Emergency escape position)



12 Safety Rail Turning wall active (SRT)**

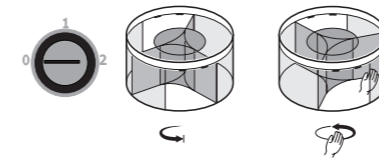


13 Extra Throatopening Sensor (ETS)**.

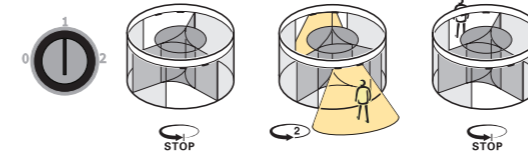


B. The working principles of the Tournex.

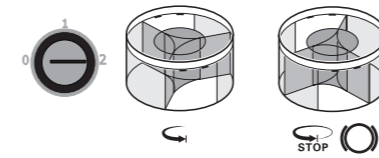
1 Off / Night mode.



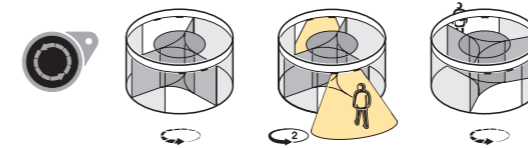
2 Day mode



3 Door set blocked mode.



4 Continuously slow (idle speed).



Controle panel

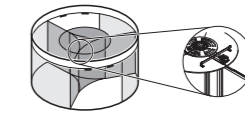


- 1 0 2 0 Off / Night mode
- 1 0 2 1 Day mode
- 1 0 2 2 Door set blocked mode
- A B C D E F 3 Status indicator
- 4 Idle speed

Locking devices

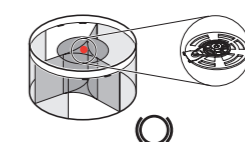
A. Doorwings

1 Doorwing & -positioning units.

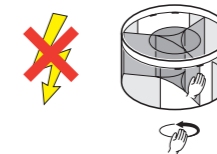


B. Door set blocked mode

1a Intergrated electromagnet lock.

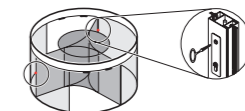


1b Fail-safe



C. Off / Night mode

1 Espagnolet lock*



2 Night sliding doors*

