

## AUTOMATIC MAINS FAILURE (AMF) PANELS

A range of three-phase and neutral, weatherproof, AMF panels rated from 100A to 2000A, to changeover automatically from Permanent Mains to Stand-by generator when the mains supply fails. Upon restoration of the mains supply the system can automatically change back to mains feed and halt the stand-by generator. Assemblies can also operate as Automatic Transfer Switches, to supply a load from two generators.

### Equipment

Up to and including 800A, assemblies incorporate 2 no. 4P contactors. At 2000A, assemblies incorporate 2 no. 4P non-automatic Air Circuit Breakers. In all instances, changeover devices are mechanically and electrically interlocked.

### Standard Operation

As standard, our AMF assemblies incorporate DSE333 controllers, which are configured to send a start signal to a stand-by generator upon failure of the mains supply. The system only changes source after a pre-set time delay, which allows the generator sufficient time to run-up before taking the load. Upon restoration of the mains the system only changes back to the mains supply after a pre-set time has elapsed. There is also the option to leave the supply running from the generator. Phase sequence protection is incorporated to ensure the generator supply has the correct phase rotation and manual over-ride control is incorporated within the panel. The controller is fully configurable on site and settings can be changed to suit the requirements of different installations and generators.

### Standard Enclosure Configurations

Up to 800A rating, enclosures provide protection to IP54. At 2000A enclosures are rated at IP44. Cable entry and exit is through the base via removable aluminium gland plates and optional single-pole connectors can be fitted to provide plug-in connectivity.

At 100A and 200A rating, enclosures are wall mounting, painted Poppy Red and optional stands or crash frames are available. At 500A rating and above, enclosures are free-standing, painted black and are mounted within galvanized, protective crash frames, which incorporate fork lift pockets and "type tested" lifting arrangements.

For very corrosive environments, enclosures can be fabricated from stainless steel and higher levels of ingress protection can also be offered. Special enclosures and paint shades can also be supplied.

### Standard Assemblies (PTO for dimensions)

Part No.	Type Ref.	Rating	Enclosure
S010101	AMF100/DSC	2 x 100A 4P Contactors	Wall Mounting, optional Stand or Crash Frame
S010102	AMF200/DSC	2 x 200A 4P Contactors	
S010098	AMF500/DSC/CF	2 x 500A 4P Contactors	Free-standing with Crash Frame
S010099	AMF800/DSC/CF	2 x 800A 4P Contactors	
S010100	AMF2000/DSC/CF	2 x 2000A 4P non-auto ACBs	



200A AMF Panel  
Bottom Inset panel removed



800A AMF Panel  
Inset panels and shrouds removed



2000A AMF Panel  
Inset panels removed

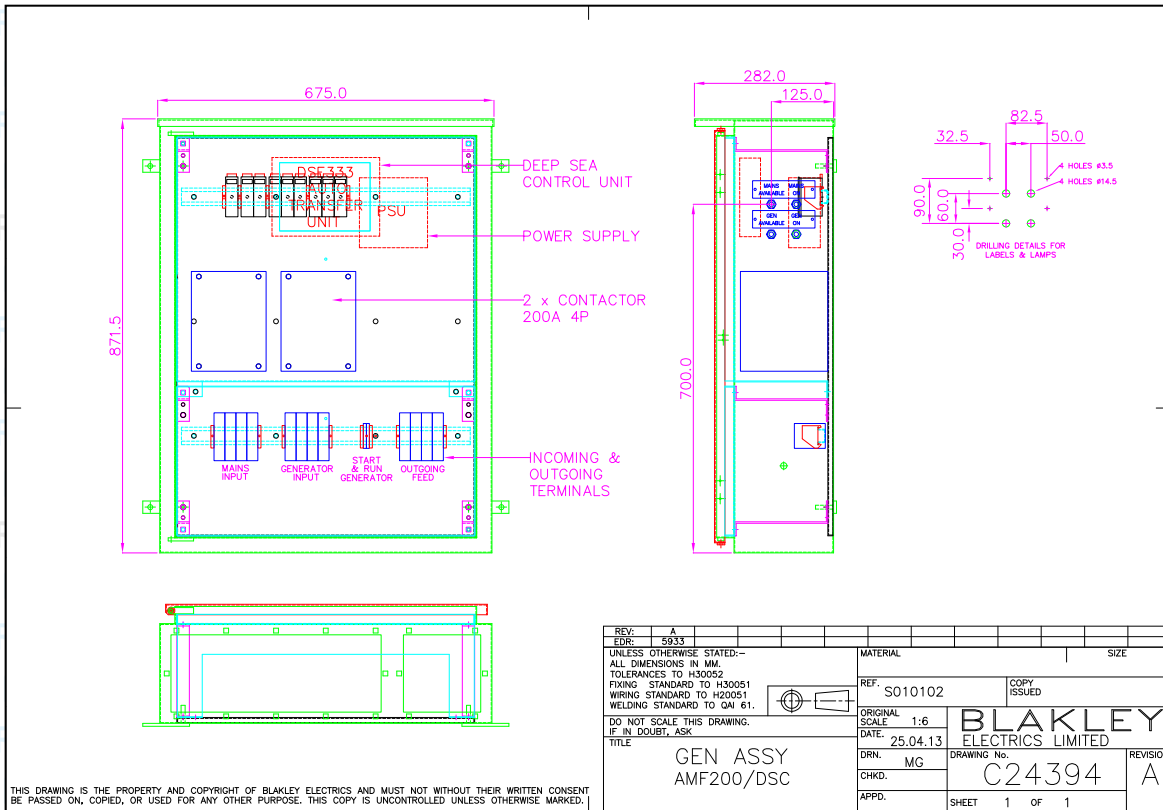
## THE POWER PROFESSIONALS

DDS201 08/14

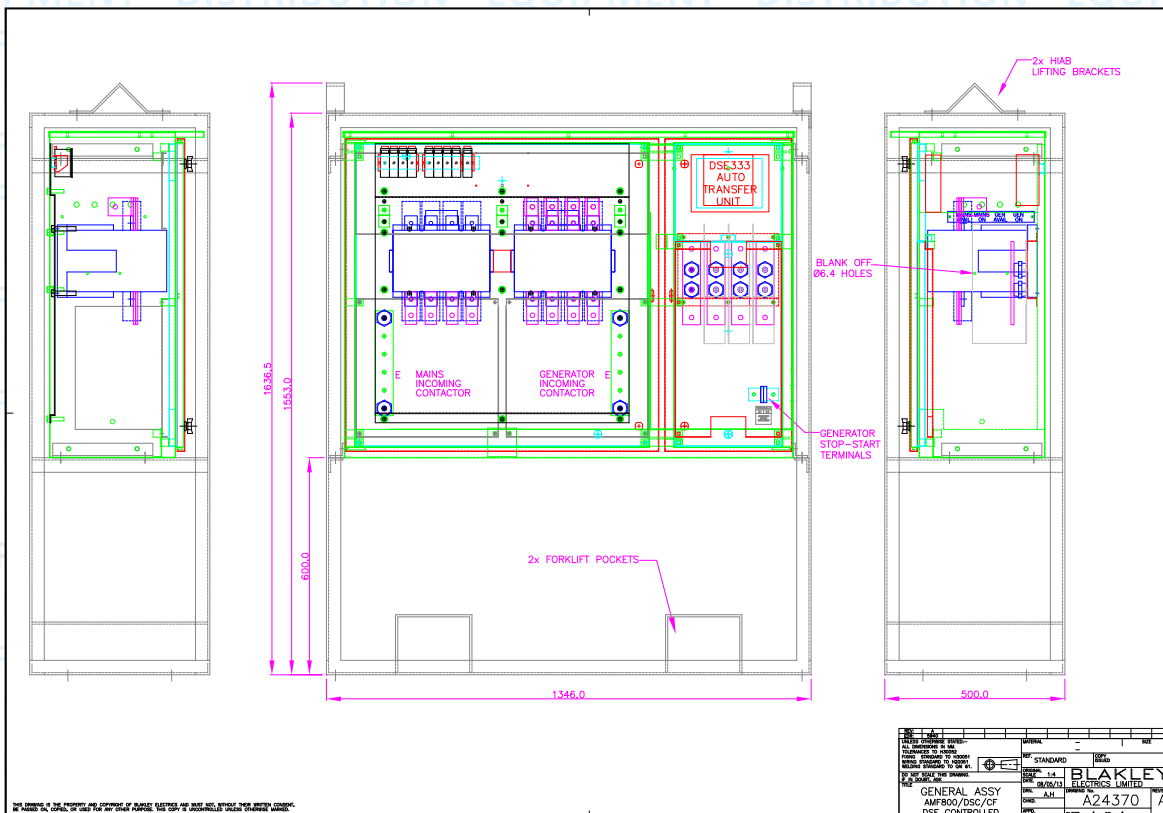
South • 1 Thomas Road, Optima Park, Crayford, Kent DA1 4GA Tel: 0845 074 0084 Fax: 0845 074 0085  
North • Unit 55, Monckton Road Ind Estate, Wakefield WF2 7AL Tel: 0845 074 0086 Fax: 0845 074 0087

[www.blakley.co.uk](http://www.blakley.co.uk) • [sales@blakley.co.uk](mailto:sales@blakley.co.uk)





Part No.	Rating	Dimensions	Weight
S010101	100A	875H x 735W x 282D	56 kgs
S010102	200A	875H x 735W x 282D	60 kgs



Part No.	Rating	Dimensions	Weight
S010098	500A	1637H x 1112W x 450D	200 kgs
S010099	800A	1637H x 1346W x 500D	220 kgs
S010100	2000A	2129H x 2292W x 848D	790 kgs