



Building industry expertise since 1889

---

**PLASTERERS**  
ACCESSORIES



## Welcome to this latest guide from Expamet – the brand you can always rely on

Expamet products are developed to ensure high levels of performance, ease of use and fast, accurate installation. Our extensive range is designed to meet the complex demands of individual projects whilst saving time and cost.

Expamet building products are available nationwide via all major builders merchants and distributors. We operate a guaranteed fast ordering process over a nationwide UK network.

### Working outside the UK?

No problem. We have a strong presence across Europe and the Middle East. For your nearest supplier, just call us on +44 (0)191 411 2244 or Email us at [expamet.sales@birtleygroup.co.uk](mailto:expamet.sales@birtleygroup.co.uk)

### Need technical advice?

Call our expert team on 0845 1212260 and they'll be pleased to help.



## Birtley Group

STRENGTH THROUGH QUALITY

## One Group. Three outstanding brands



The famous Birtley, Expamet and Bowater Doors brands are now working together within Birtley Group. A combined strength which is adding value to projects across the UK through quality, innovation and higher service levels than ever before.

That's Birtley Group commitment.

[www.birtleygroup.co.uk](http://www.birtleygroup.co.uk)

**Don't forget these other outstanding Expamet product ranges:**

**Builders' Metalwork**  
Straps, fixings, angles and brackets, wall starters, ties and bed joint reinforcement.

**BAT Windpost Systems**  
Designed on a project-by-project basis to meet exact requirements.

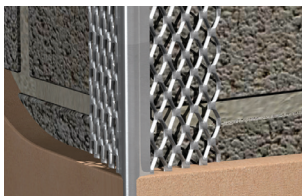
**BAT Masonry Support**  
Bracket and angle support systems can be tailored to meet individual designs.

**Hy-Rib Permanent Formwork**  
Proven through over 80 years in many prestigious building projects.

- 4 Metal Beads
- 5 Metal Beads for Internal Use
- 7 Metal Beads for Thin Coat Plaster
- 8 Metal Beads for Dry Lining
- 9 Metal Beads for External Use
- 12 PVCu Beads
- 14 Metal Lathing
- 16 Metal Lathing Fixing Instructions
- 19 Exmet
- 20 Security Mesh
- 21 Metal Arch Formers

## METAL BEADS

Plasterers' beads have become an indispensable part of plastering operations. Use of the appropriate beads greatly reduces the time taken in forming sharp corner joints, ends stops and other details. Moreover they offer protection and reinforcement to vulnerable plaster edges.



### General Installation

- Beads should be fixed using plaster or render dabs or a suitable mechanical fixing at a maximum of 600mm centres
- Beads may be wire tied to the face of metal lathing backgrounds
- Cut with tinsnips or shears

- When jointing angle beads use a dowel inserted in the nose to ensure continuity and alignment
- Avoid damage to beads when trowelling plaster or render
- Stainless steel beads are specifically designed for cement based renders and should not be used with gypsum-based plasters unless they are specified with an approved protective finish
- Powder-coated galvanized steel beads, with a PVC nosing are designed for external use in sheltered/moderate environments only.
- The 570 galvanized render stop bead should only be used in sheltered applications/locations. We recommend that stainless/PVC beads are used in external applications.
- In exposed, coastal locations, even stainless steel is susceptible to corrosion. PVC beads should be used in harsh marine/industrial environments

### Joints in Plaster Over

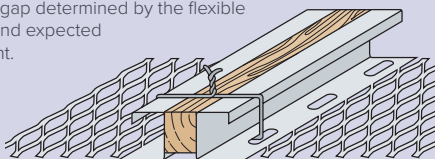
#### METHOD 1

Fix one stop bead down the side of the building movement joint, levelling with the timber grounds.

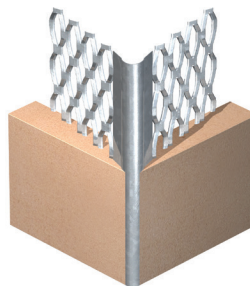
- When this bead is set, fix the second bead into position using timber inserts to control the required gap. Also levelling to the timber grounds.
- When both beads are set, remove timber inserts and complete the plastering. Fill the gap with flexible sealant.

#### METHOD 2

Plaster stop beads used with insert to make a bead for building movement control joint. Use timber batten wired to beads to set up gap width. On removal of the timber batten flexible sealant can be used as required. Width of gap determined by the flexible nature of sealant and expected masonry movement.



## METAL BEADS FOR INTERNAL USE



### Angle Bead

Pre-galvanized steel.

Provides a true, straight corner which protects and reinforces plaster where it is most vulnerable.

Lengths: 2400 / 2700 / 3000

Ref.	550	558
Plaster depth	10-13	10-13
Wing width	55	45



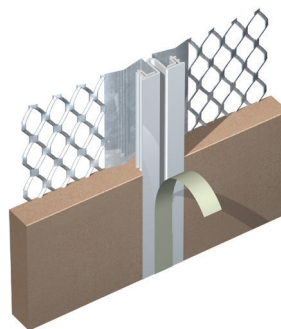
### Plaster Stop Bead

Pre-galvanized steel.

Plaster stop beads for use as a trim for plaster up to openings and abutments or where a change of substrate is required.

Lengths: 2400 / 3000

Ref.	562	563	565	566
Plaster depth	10	13	16	19
Wing width	60	57	61	58



### Movement Bead

Pre-galvanized steel.

Forms movement joints in plaster and render, allows for +3mm, -1mm movement. Movement Beads should NOT be used over structural movement joints.

Lengths: 3000

Ref.	588
Plaster depth	13
Wing width	123

### Need technical advice?

Call our expert team on 0845 121 2260 and they'll be pleased to help.

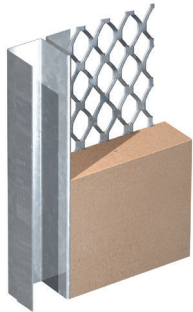
## METAL BEADS FOR INTERNAL USE



### Architrave & Feature Bead (Engaging)

Pre-galvanized steel.  
Creates a feature at plaster edges, engaging with frame.  
20mm flange  
Lengths: 3000

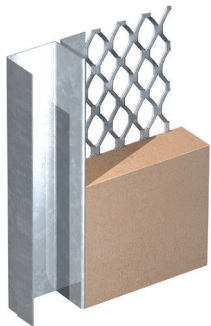
Ref.	586	580
Plaster depth	10	13
Wing width	52	52



### Architrave & Feature Bead (Abutting)

Pre-galvanized steel.  
Creates a feature at plaster edges, abutting with frame to give a 15mm shadow gap. Lengths: 3000

Ref.	585	579
Plaster depth	10	13
Wing width	52	52

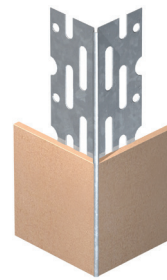


### Architrave & Feature Bead (Abutting)

Pre-galvanized steel.  
Creates a feature at plaster edges, abutting with frame to give a 22mm shadow gap.  
Lengths: 3000

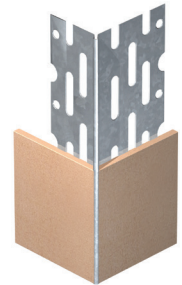
Ref.	581
Plaster depth	13
Wing width	52

## METAL BEADS FOR THIN COAT



### Thin Coat Angle Bead

Ref: 553. Pre-galvanized steel.



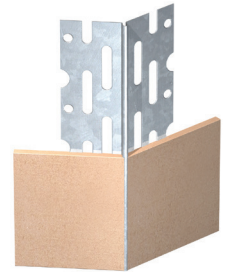
### Extended Leg Thin Coat Angle Bead

Ref: 596. Pre-galvanized steel.  
To provide enhanced cover at plasterboard joints to minimise cracking.



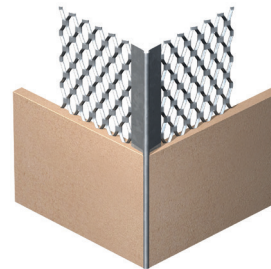
### Thin Coat Stop Bead

Ref: 560, 561. Pre-galvanized steel.



### 135° Thin Coat Angle Bead

Ref: 597. Pre-galvanized steel.  
For 135° plasterboard corners.



### Thin Coat Small Mesh Expanded Wing Angle Bead

Ref: 595. Pre-galvanized steel.

Ref.	553	560	561	595	596	597
Plaster depth	2 - 3	3	6	2 - 3	2 - 3	3
Wing width	22	25	25	25	24/30	24
Lengths available	2400 2700 3000	2400 3000	2400 3000	2400 3000	2400 3000	2400 3000

## METAL BEADS FOR DRY LINING



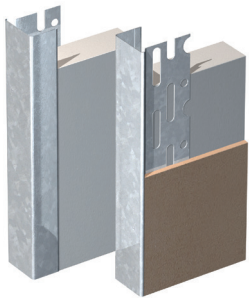
### Dry Wall Feature Bead (Engaging)

Ref: 513, 522. Pre-galvanized steel. Neat shadow lines and recesses can be formed around door frames, abutments and the like. 20mm flange



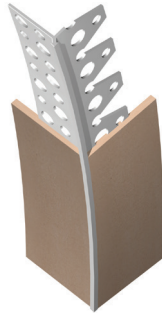
### Dry Wall Feature Bead (Abutting)

Ref: 514. Pre-galvanized steel. Neat shadow lines and recesses can be formed around door frames, abutments and the like. This bead can be used with plasterboard thicknesses of 9.5mm, 12.5mm and 15mm.



### Plasterboard Edging Bead

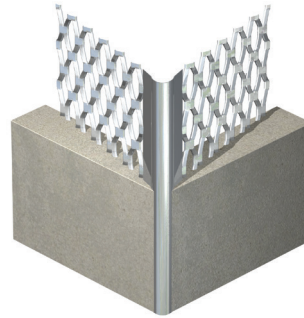
Ref: 567, 568, 576. Pre-galvanized steel. A reversible, dual-purpose bead which reinforces plasterboard edges by enclosing them in a protective steel section.



### Dry Lining Arch Bead

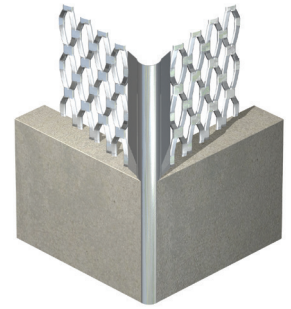
Ref: PFB001. PVCu. For creating curved and arched forms in thin-coat and dry-lining applications. See PVCu Beads (page 13) for full specification of this product

## METAL BEADS FOR EXTERNAL USE



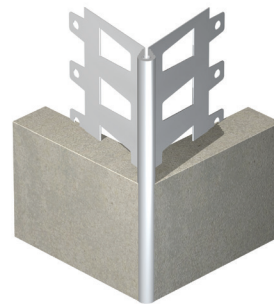
### Stainless Steel Angle Bead

Ref: 545. Stainless steel. For external render work. One size for both thicknesses.



### Stainless Steel Angle Bead (Standard Wing)

Ref: 506. Stainless steel. For external render work. One size for both thicknesses.



### Angle Bead

Ref: 571. Pre-Galvanized and synthetically coated with pvc protective nosing. Protects render corners.

Ref.	513	522	514	567	568	576
Plaster depth	2	2	2	2	2	2
Plaster board depth	9.5	12.5	9.5, 12.5, 15	9.5	12.5	15
Wing width	25	25	25	24/9	24/12.5	25.5/10
Lengths available	3000	3000	3000	3000	3000	3000

Ref.	545	506	571
Plaster depth	16-20	16-20	20
Wing width	64	53	52
Lengths available	3000	3000	3000

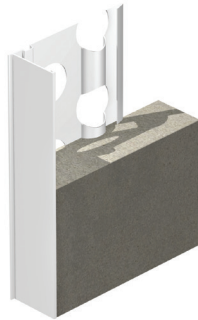
## METAL BEADS FOR EXTERNAL USE



### Stop Bead (Standard Wing)

Ref. 509, 510, 511 & 507.  
Stainless steel.

Finishes and protects render edges.



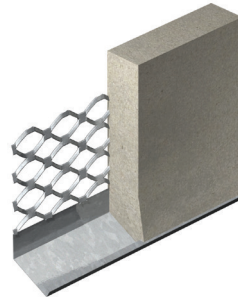
### External Stop Bead

Ref. 572.

Pre-galvanized and synthetically coated with pvc protective nosing.

Finishes and protects render edges.

## METAL BEADS FOR EXTERNAL USE

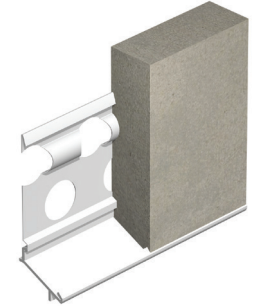


### External Render Stop (Bell Cast)

Ref. 570.

Pre-galvanized steel.

Forms and protects lower edge of render. Sheltered locations only.

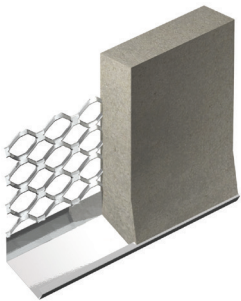


### External Render Stop Type 2 (Standard Wing)

Ref. 573.

Pre-Galvanized and synthetically coated with pvc protective nosing.

Forms and protects lower edge of render.

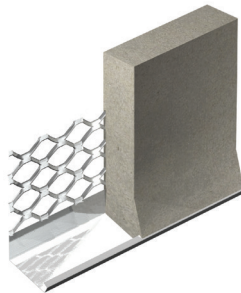


### External Render Stop (Bell Cast)

Ref. 547.

Stainless steel.

Forms and protects lower edge of render.

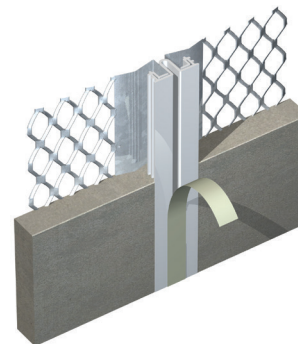


### External Render Stop (Bell Cast, Standard Wing)

Ref. 508.

Stainless steel.

Forms and protects lower edge of render.

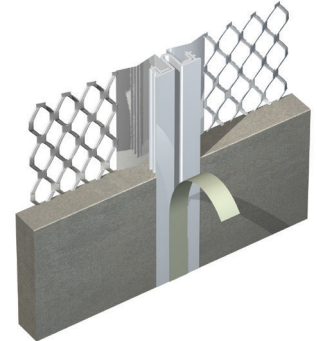


### Movement Bead

Ref. 589 & 590.

Pre-galvanized steel.

Forms movement joints in plaster and render, allows for +3mm, -1mm movement. Movement Beads should NOT be used over structural movement joints.



### Movement Bead

Ref. 542, 543 & 544.

Stainless steel.

Forms movement joints in plaster and render, allows for +3mm, -1mm movement. Movement Beads should NOT be used over structural movement joints.

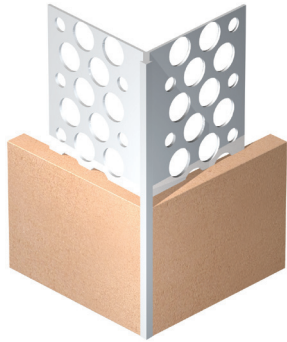
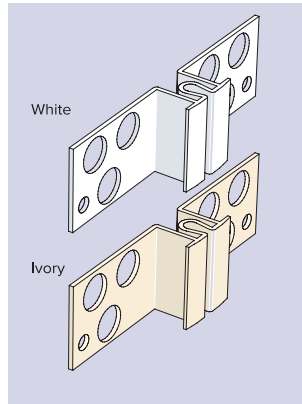
Ref.	509	510	511	507	572	547	508
Render depth	10	13	16	19	20	16-20	16-20
Wing width	57	54	55	52	55	65/25	58/25
Lengths available	3000	3000	3000	3000	3000	3000	3000

Ref.	570	573	589	590	542	543	544
Plaster depth	16 - 20	20	18 - 19	21	13	16	21
Wing width	65/25	56/20	125	119	123	123	119
Lengths available	3000	3000	3000	3000	3000	3000	3000

## PVCu BEADS

A complete range of quality plastic beads that provides all the benefits of traditional metal beads with the added advantages of a light flexible material, aesthetic elegance and cost effective regulatory compliance.

- Light and easy to use.
- Easy to form curves and arches.
- White – improved aesthetics – minimises impact on light coloured renders.
- Ivory – for use with coloured renders.
- Manufactured with a high percentage of reclaimed window-grade PVCu – an environmentally sound material.



### Angle Bead

Ref. PAB010, PAB015, PAB020, PABLL010 and PABLL020.

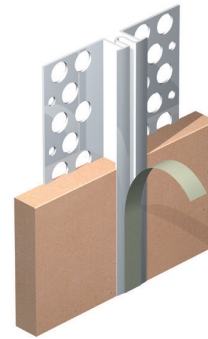
For use on all plastered or rendered corners where a true, sharp corner is required. Protects and reinforces plaster where it is most vulnerable.



### Stop Bead

Ref. PSB010, PSB013, PSB015 & PSB020.

Designed to deliver a clean edge, they protect and finish plaster and render edges.



### Movement Bead

Ref. PMB010, PMB015 & PMB020.

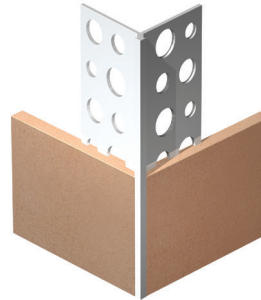
Used where the underlying substrate changes, or where minor movement in the structure beneath the render is expected. Movement beads should NOT be used over structural movement joints.



### Bell Cast (Render Stop) Bead

Ref. PBC010, PBC015 & PBC020.

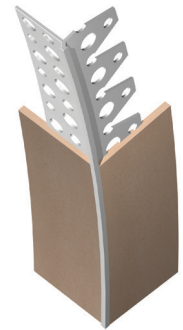
Forms and protects the lower edge of external render. It is used above doors, windows and at DPC level.



### Thin Coat Angle Bead

Ref. PCT002.

Provides a true, clean corner for plasterboards/smooth backgrounds. Protects and reinforces against cracking.



### Dry Lining Arch Bead

Ref. PFB001.

Readily bends to create curves and arch forms for decorative plaster requirements in thin coat and dry lining applications.

Ref.	PAB 010	PAB 015	PAB 020	PABLL 010	PABLL 020	PSB 010	PSB 013
Plaster depth	6 - 10	13 - 15	16 - 20	6 - 10	16 - 20	10	13
Wing width	41	41	41	47	47	45	45
Colours available	OO	OO	O	O	O	OO	O
Lengths available	3000	3000	3000	2500	2500	3000	2500

PSB 015	PSB 020	PMB 010	PMB 015	PMB 020	PBC 010	PBC 015	PBC 020	PCT 002	PFB 001
15	20	10	15	20	6 - 10	11 - 15	16 - 20	3	3
45	45	67	67	67	43x10	43x15	43x20	25	25
O	O	OO	OO	O	O	OO	O	O	O
3000	3000	2500	2500	2500	3000	3000	3000	2500	2500

## METAL LATHING

Suitable for internal or external applications

Metal Lathing is easily formed, allowing designers to create free forms such as arches, domes and vaults in a trouble-free effective manner. Metal Lathing can also be used as a carrier for fire protection finishes to structural steelwork.

Simple to use and fix, and easy to work with, the Metal Lathing range is designed to provide durable, effective solutions whatever kind of plastering or rendering work your job entails.

All forms provide an excellent key for plaster and render for internal and external wall finishes and suspended ceilings.

Metal laths are formed in either galvanized or stainless steel and are produced in three main forms:

- Diamond patterned mesh (Expanded Metal Lathing)
- Herringbone-patterned mesh with V profiled ribs (Riblath)
- Ribbed mesh with tangs (Hy-Rib)

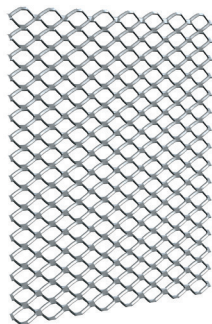
### Expanded Metal Lathing

BB263 – Provides a key for lightweight plasters over small openings and chases.

BB264 – Carrier for lightweight plaster finishes on walls and ceilings.

BB265 – General plaster reinforcement.

95S – Stainless steel carrier for external render finishes.



### Expanded Metal Lathing for internal use

Ref.	Material Thickness (mm)	Nominal Weight kg/m <sup>2</sup>	Mesh Size (mm)	Maximum Centres of support (mm)	Sheet Size (mm)
263	0.500	0.96	20x10	300	2500x700
264	0.600	1.15	20x10	350	2500x700
265	0.400	0.77	20x10	300	2500x700

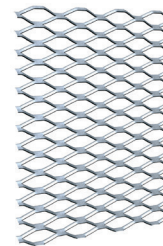
### Expanded Metal Lathing for external use

Ref.	Material Thickness (mm)	Nominal Weight kg/m <sup>2</sup>	Mesh Size (mm)	Maximum Centres of support (mm)	Sheet Size (mm)
95S	0.460	1.05	10.5x30.5	350	2500x700

## METAL LATHING

### Heavy Duty Expanded Metal Lathing

94G – For use with heavyweight plasters eg. Barium based.



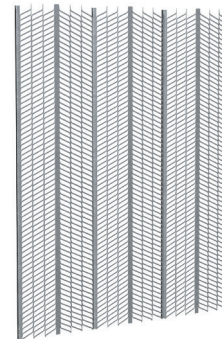
Ref.	Material Thickness (mm)	Nominal Weight kg/m <sup>2</sup>	Mesh Size (mm)	Maximum Centres of support (mm)	Sheet Size (mm)
94G	0.95	2.50	9.5x28.6	450	2500x700

### Riblath

269 – To carry lightweight plasters on a solid background.

271 – To carry sand/cement plaster and lightweight plaster on support systems or ceilings.

267 – Stainless steel carrier for all external rendered finishes.



### Riblath for internal use

Ref.	Material Thickness (mm)	Nominal Weight kg/m <sup>2</sup>	Rib Depth (mm)	Maximum Centres of support (mm)	Sheet Size (mm)
269	0.4	1.66	8	600	2500x600
271	0.5	1.86	8	600	2500x600

### Riblath for external use

Ref.	Material Thickness (mm)	Nominal Weight kg/m <sup>2</sup>	Rib Depth (mm)	Maximum Centres of support (mm)	Sheet Size (mm)
267	0.3	1.16	8	600	2500x600

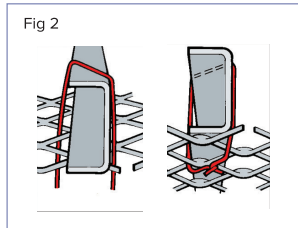
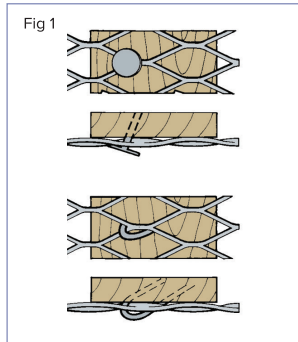
### Fixings for Expamet Metal Lathing

Ref.	Type	Size (mm)	Unit
HIS/50	Stainless Steel Hammer Screws	50x6 Ø	100/Box
HIG/50	Zinc Plated Hammer Screws	50x6 Ø	100/Box
TY1S	Stainless Steel Tying Wire - approx. length 90m	1.22 Ø	1kg Coil
TY05G	Galvanized Steel Tying Wire - approx. length 50m	1.22 Ø	0.5kg Coil
SCN/38	Stainless Steel Clout Nails - approx. qty. 1750 no	38x2.65 Ø	5kg Box

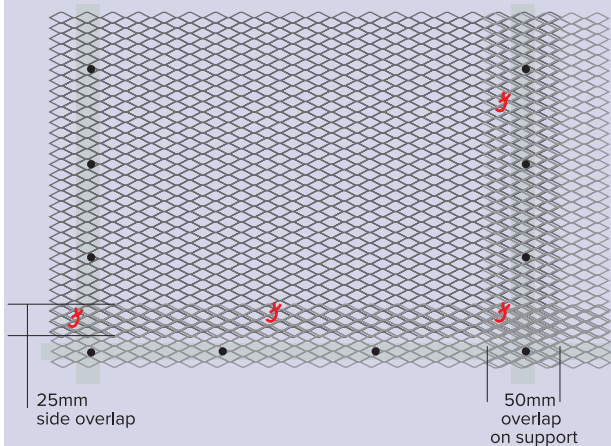
## METAL LATHING FIXING INSTRUCTIONS

### Fixing Expanded Metal Lathing to metal or timber supports

- Fix with the long way of mesh running from support to support, with all strands sloping downwards and inwards from the face of the coating.
- To connect to timber grounds use 38x2mm plasterer's nails or galvanized staples at 100mm centres. Start at the centre of the sheet and work out towards the edges, always fix at an angle (see fig 1) to allow lath to be pulled tight.
- To fix to steel channels, tie with 1.22mm tying wire at 100mm centres. Tie as illustrated (see fig 2) by creating a 'hairpin' shape with the wire then pull tight and twist. Take care that cut wire ends are not close to plaster surface.



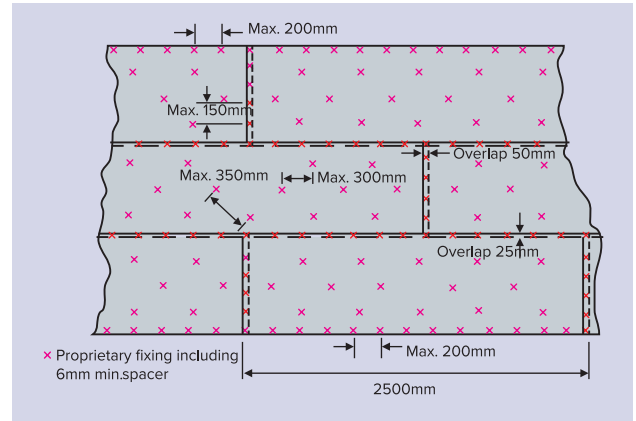
### General fixing information for fixing to metal or timber supports.



- Fixing to supports should be at 100mm centres
- Sheet overlaps should be wired at 150mm intervals

## METAL LATHING FIXING INSTRUCTIONS

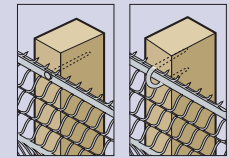
### Fixing Expanded Metal Lathing to solid vertical backgrounds



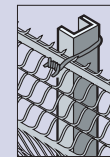
### Fixing Riblath to metal or timber supports

- Riblath is fixed at each rib to timber grounds using the same fixings as Expanded Metal Lathing. Use 1.63mm or two strands of 1.22mm galvanized mild steel wire or stainless steel tying wire to secure to steel supports. Ribs should run at right angles to supports with the apex of the rib in contact with the support.
- When joining Riblath sheets overlap the edge ribs and tie the edges with 1.22mm tying wire at 150mm centres as illustrated. Ensure the end joint occurs in front of a support and overlap by 50mm, if it does not then overlap sheets by 100mm and provide two 1.63mm wire ties per rib overlap.

Riblath fixed to timber studs at max. 600mm centres using 38mm nails or 32mm staples.

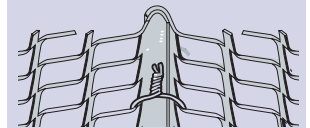


Riblath wire tied to steel studs at max. 600mm centres.



### Joining Riblath Sheets

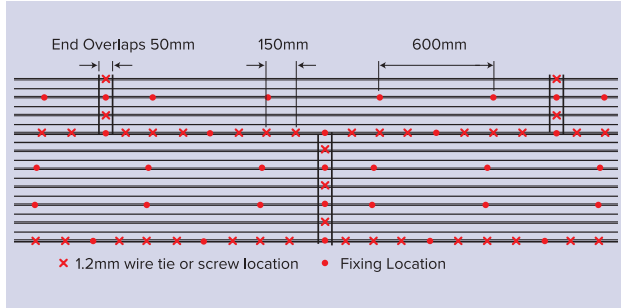
Overlap edge ribs and wire tie at 150mm intervals



## Fixing Riblath to solid vertical backgrounds

Proprietary fixings should be used to hold the ribs of the lath firmly against the background.

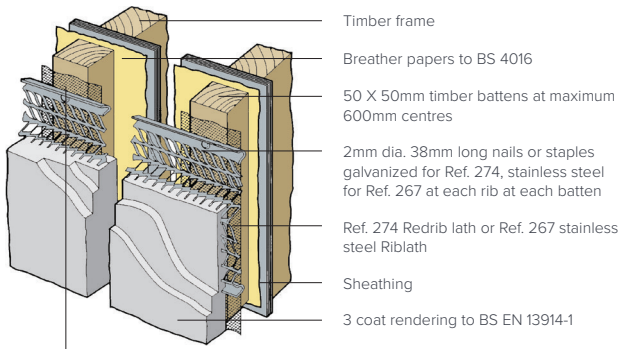
Where Riblath is fixed with the ribs running vertically, fixings should be made through all ribs at 600mm centres.



## Fixing Riblath to external timber frame construction

Provide movement joints through the render, Riblath and battens at each storey height and at a maximum 5m spacing horizontally.

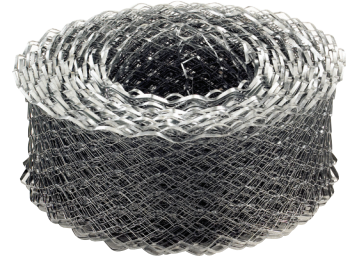
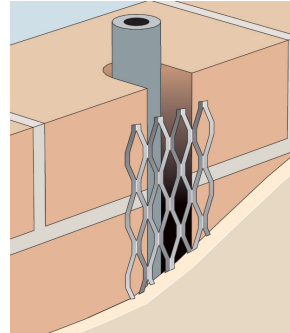
For timber frame detail design refer to advice and regulations issued by the NHBC, TRADA and current Building Regulations.



DPC breather paper should be fixed tautly across the front of the battens.

*Note: illustration is for guidance only for fixing the Riblath. Detailing of the supporting structure is the responsibility of the designer.*

Exmet is a galvanized mesh reinforcement for internal plastering over wall chases.



### Galvanized

Ref.	Material	Coil Width (mm)	Coil Length (mm)	Gauge (mm)	Qty per bundle
76320	Galvanized	65	20	0.4	5
76420	Galvanized	115	20	0.4	5
76520	Galvanized	175	20	0.4	1
76620	Galvanized	225	20	0.4	1
76720	Galvanized	305	20	0.5	1

### Stainless Steel

Stainless Steel variations are for only suitable for use with cement based renders. this product is not for use with Gypsum based plaster

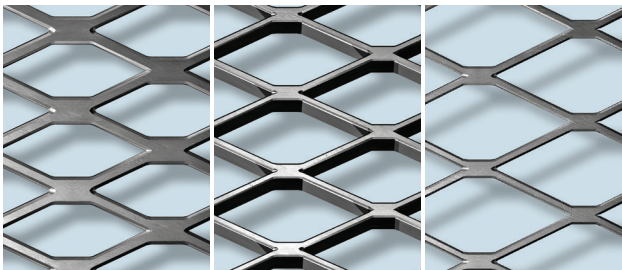
Ref.	Material Thickness (mm)	Coil Size Width (mm)	Quantity
76820	0.3	65	5
76920	0.3	115	5
77020	0.3	175	1
77120	0.3	225	1

## SECURITY MESH

A cost effective way of securing buildings or internal spaces by sandwiching a layer of steel mesh into the walls and ceilings during construction.

Available in a range of gauges this high quality security mesh is suitable for internal walls, ceilings, partitions and external brickwork. It can also be provided in galvanized steel, where damp conditions are expected.

See our full range of Expanded metal and lath at [www.expamet.co.uk](http://www.expamet.co.uk)



50-73HFG / 50-73HF

50-89HRG / 50-89HR

50-76MFG / 50-76MF

Mild Steel | Galvanized

Ref.	Security Mesh Type	Mesh LW	Mesh SW	Strand Width	Strand Thickness	Weight kg/m <sup>2</sup>	Sheet Size
50-73HFG	Flattened	42.9	14.2	4.6	2.7	8.59	2440x1220
50-89HRG	Raised	50.8*	22.6*	3.1	3.0	6.52	2440x1220
50-76MFG	Flattened	43.4	18.0	2.3	1.1	1.85	1250x2440
50-73HF	Flattened	42.9	14.2	4.6	2.7	8.59	2440x1220
50-89HR	Raised	50.8*	22.6*	3.1	3.0	6.52	2440x1220
50-76MF	Flattened	43.4	18.0	2.3	1.1	1.85	1250x2440

\* Mesh pitch size

## METAL ARCH FORMERS

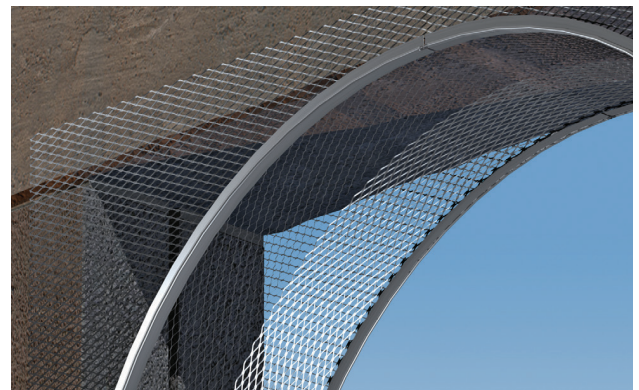
Metal Arch Formers add elegance and style to any home. Suitable for a wide range of openings, and available in an attractive range of shapes, they allow housebuilders, designers, refurbishers and DIY enthusiasts to create distinctive, decorative arches with ease and speed.

Manufactured from tough pre-galvanized steel, the strength and rigidity for a quality finish is assured by the parallel strand mesh. The special downward and inward angling of the horizontal strands ensures an excellent plaster key.

Intended for internal use only, Expamet arch formers are a decorative accessory allowing the plasterer to create arches and curves in a range of different shapes.

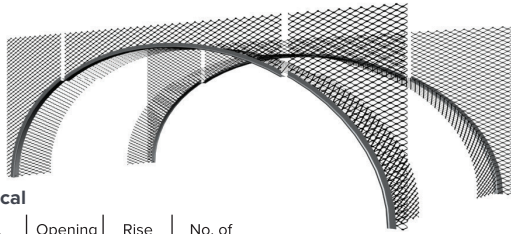
### Unique PVC nosing

No other Arch Former range has Expamet's unique PVC nosing. It simply clips into place to cover the metal and provides a continuous edge – an edge that you can follow to create a more accurate, professional finish when plastering.



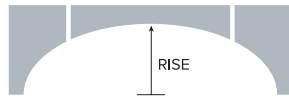
# METAL ARCH FORMERS

# METAL ARCH FORMERS

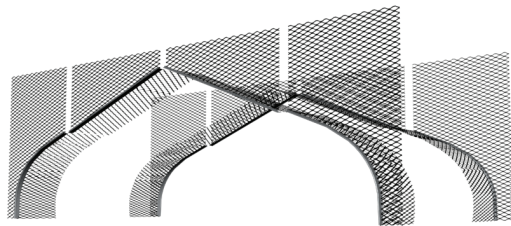


## Elliptical

Ref.	Opening Width (mm)	Rise (mm)	No. of Parts
EEL48	1220	340	4
EEL54	1370	360	4
EEL60	1520	380	4
EEL72	1830	410	6
EEL84	2130	430	6
EEL96	2440	440	6
EEL120	3050	520	6

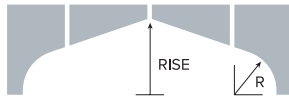


6 piece arch joints  
(4 piece arch has joint at centre only)  
To suit wall widths up to 230mm.  
For wall widths over this use soffit strips.



## Spandrel

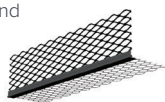
Ref.	Opening Width (mm)	Radius R (mm)	Rise (mm)	No. of Parts
ESP30	760	180	220	4
ESP36	910	180	240	4
ESP48	1220	230	290	4
ESP60	1520	230	330	4
ESP72	1830	230	360	4
ESP84	2130	230	370	4
ESP96	2440	230	390	8
ESP120	3050	230	440	8



8 piece arch joints  
(4 piece arch has joint at centre only)  
To suit wall widths up to 230mm.  
For wall widths over this use soffit strips.

## Make Up Piece

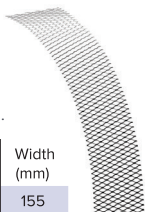
For use with Arch Corners and Semicircle Arch Formers.



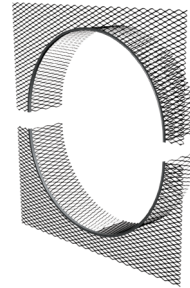
Ref.	Length (mm)	No. of Parts
MP24	500	2

## Lath Soffit Strip

Supplied as a coil.



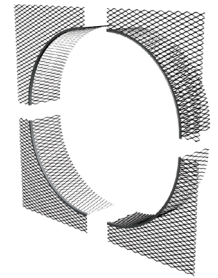
Ref.	Length (mm)	Width (mm)
LSS6	1830	155



## Bullseye



Ref.	Opening Width (mm)	Finished Radius	No. of Parts
BE18	460	222	4

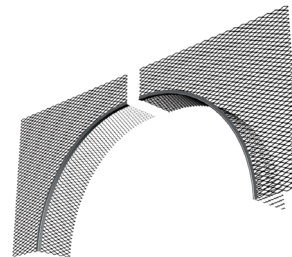


## Internal Liners for circular windows



Ref.	Opening Width (mm)	Diameter (mm)	No. of Parts
WBE24	610	594	8

\*includes additional soffit strips for deeper recesses

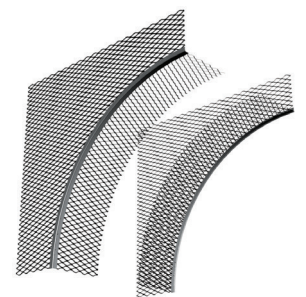


## Semicircle



Ref.	Opening Width (mm)	Radius (R) mm	No. of Parts
ESC30	760	372	4
ESC32	810	397	4
ESC33	840	412	4
ESC36	920	452	4
ESC48	1220	602	4
ESC60	1520	752	4

To suit wall widths up to 230mm.  
For wall widths over this use soffit strips.



## Arch Corner



Ref.	Finished Radius (R) mm	No. of Parts
EAC15	372	2
EAC18	452	2
EAC24	602	2
EAC30	752	2

To suit wall widths up to 230mm.  
For wall widths over this use soffit strips.

Expamet is one of the leading brands of specialist building products in the UK, Europe and the Middle East. Operating across two continents, we offer internationally recognisable products that are synonymous with quality, safety and innovation. Wherever you are and whatever your project, Expamet solutions are never far away.

---

## EXTENSIVE PRODUCT RANGE

Each of our great brands is committed to quality in its particular product field.

- **BAT** – Builders' metalwork products
- **Expamet** – Plasterers' accessories
- **Hy-Rib®** – Permanent formwork for concrete
- **Power-Tie™** – Wall ties

---

## TECHNICAL AND SALES SUPPORT

Our comprehensive technical support service is designed to support your project all the way from specification to completion. Our expert technical and sales teams have extensive experience in the construction and engineering industries and are always on hand to offer advice on using our products to their full potential. Call us today on 0845 121 2260 to find out more.



Greatham Street, Longhill Industrial Estate (North)  
Hartlepool TS25 1PU United Kingdom  
Tel: Sales: 0845 121 2260  
E-mail: [expamet.sales@birtleygroup.co.uk](mailto:expamet.sales@birtleygroup.co.uk)  
Website: [www.expamet.co.uk](http://www.expamet.co.uk)

---

Quality assurance BS EN ISO 9001 and ISO 14001 2015 Registered Firms Certificate No. FM589272, EMS 589274



All products within the scope of regulation No. 305/2011 'The Construction Products Regulation' are CE marked in accordance with all relevant Harmonised Standards and ETA's. Declaration of performance documents can be found at [www.expamet.co.uk](http://www.expamet.co.uk)

Birtley Group operate a continuous development programme and reserve the right to amend specification without prior notification. Please note some products are not manufactured by Birtley Group and are therefore excluded from our registration to BS EN 9001: 2015. Please contact the technical department for further information.

All copyright, trade marks and unregistered design rights for the products detailed in this brochure are the property of Birtley Group Ltd.