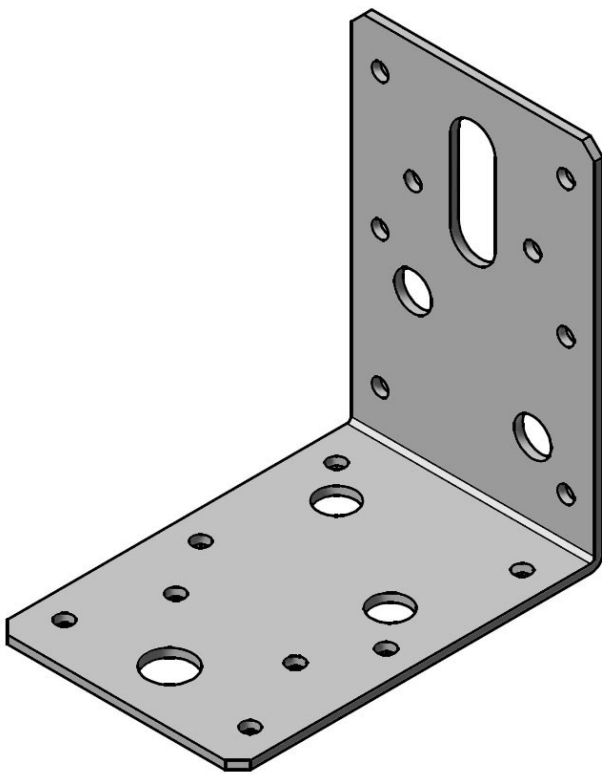




AB909060

GALLERY



PRODUCT ATTRIBUTES

Brand	Expamet BAT
Generic Ref	AB909060
Product Range	Builders Metalwork
Product Sub-range	Timber Connectors
Product Type	Angle Bracket
Material	Galvanized Mild Steel S250GD+Z275 to EN10346:2015
Coating/Finish/Colour	275g/m ² Zinc Coating
Length 1/Projection	90mm

Length 2/height	90mm
Width/Wing Length	59mm
Material Gauge	2.0mm
Individual Weight (kg)	0.1679
Fire Rating	Euroclass A1
Fixing Hole Dimensions	4mm (16) 9mm (4) 11mm (1) 11x30 Slot (1)
Fixing Type	As suitable for substrate and hole size
Installation requirement 1	Brackets must be used in pairs to prevent eccentric loading
Unit of Sale EAN	5014316013802
Sales Qty	50
Packaging material	Cardboard
Carton Ref	TNB
Carton/Size	300 x 130 x 60
Packaging weight	0.139
Packaged transit weight	8.534
Features/Benefits 1	275g/m2 Gavanized Coating
Features/Benefits 2	Various fixing holes sizes for convenience

HEALTH AND SAFETY INFORMATION

1. Identification

'Expamet'
Birtley Group Ltd
Mary Ave,
Birtley,
DH3 1JF
UNITED KINGDOM
(0191) 410 6631

2. Composition

Galvanized Mild Steel S250GD+Z275 to EN10346:2015

3. Hazards Identification

Possible cuts from sharp steel edges.
Toxic and irritant fumes from high temperatures

4. First aid measures

Skin and eye contact: Treat cuts from steel edges as required.
Ingestion: Not applicable.
Inhalation: Remove from source of fumes and dust.

5. Fire fighting measures

Non-flammable material.

6. Accidental release measures

Not applicable.

7. Handling and storage

Bands and straps must not be used for lifting.
Use suitable PPE when handling products.
Assess manual handling risks before lifting.
Products should be stacked on firm level ground in dry conditions.

8. Exposure controls

Wear personal protection such as gloves and safety goggles when handling products.
Some products may have a film of soluble cutting fluid after manufacture; therefore carry out personal hygiene including proper washing of hands, after contact.

9. Physical and chemical properties

Products are supplied in various lengths, widths and gauges.
Metallic grey appearance.

10. Stability and reactivity

Products are stable under normal conditions but if subjected to high temperatures, fumes are produced.

11. Toxicological information

High temperatures can produce fumes.

12. Ecological information

No known Hazard.

13. Disposal considerations

Recycle or dispose of in accordance with Waste Management Licensing Regulations.

14. Transport information

Not classified as hazardous for transport.

15. Regulatory information

Products are articles and have no registration obligation under REACH.

16. Other information

All products must be installed in accordance with Expamet Building Products' published instructions.

Where structural products are to be removed from an existing installation, care must be taken to ensure that the procedure followed does not compromise the loading/installation restrictions applicable to the products.

Actual fixing installations must comply with current Health and Safety requirements.