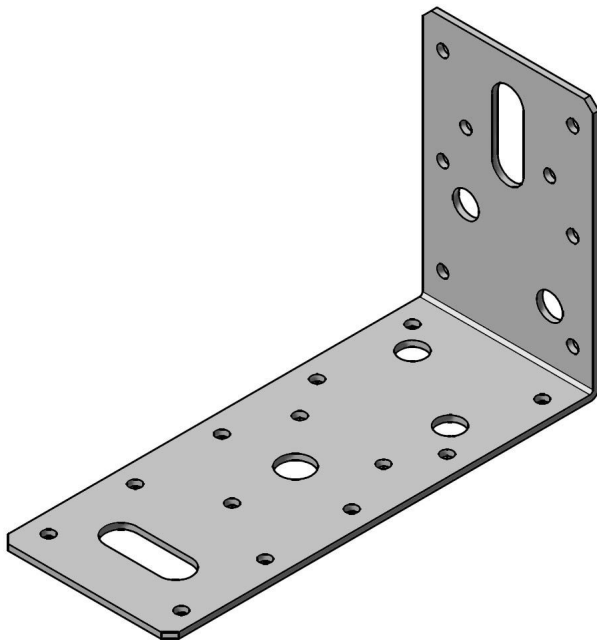




## AB1509059

### GALLERY



### PRODUCT ATTRIBUTES

<b>Brand</b>	Expamet BAT
<b>Generic Ref</b>	AB1509059
<b>Product Range</b>	Builders Metalwork
<b>Product Sub-range</b>	Timber Connectors
<b>Product Type</b>	Angle Bracket
<b>Material</b>	Galvanized Mild Steel S250GD+Z275 to EN10346:2015
<b>Coating/Finish/Colour</b>	275g/m <sup>2</sup> Zinc Coating
<b>Length 1/Projection</b>	150mm
<b>Length 2/height</b>	90mm
<b>Width/Wing Length</b>	59mm
<b>Material Gauge</b>	2.0mm
<b>Individual Weight (kg)</b>	0.197

<b>Fire Rating</b>	Euroclass A1
<b>Fixing Hole Dimensions</b>	4mm (21) 9mm (4) 11mm (1) 11x30 Slot (2)
<b>Fixing Type</b>	As suitable for substrate and hole size
<b>Installation requirement 1</b>	Brackets must be used in pairs to prevent eccentric loading
<b>Unit of Sale EAN</b>	5014316692274
<b>Sales Qty</b>	50
<b>Packaging material</b>	Cardboard
<b>Carton Ref</b>	TWB
<b>Carton/Size</b>	290 x 290 x 85
<b>Packaging weight</b>	0.3
<b>Packaged transit weight</b>	10.15
<b>Features/Benefits 1</b>	275g/m2 Gavanized Coating
<b>Features/Benefits 2</b>	Various fixing holes sizes for convenience

## HEALTH AND SAFETY INFORMATION

### 1. Identification

'Expamet'  
Birtley Group Ltd  
Mary Ave,  
Birtley,  
DH3 1JF  
UNITED KINGDOM  
(0191) 410 6631

### 2. Composition

Galvanized Mild Steel S250GD+Z275 to EN10346:2015

### 3. Hazards Identification

Possible cuts from sharp steel edges.  
Toxic and irritant fumes from high temperatures

### 4. First aid measures

Skin and eye contact: Treat cuts from steel edges as required.  
Ingestion: Not applicable.  
Inhalation: Remove from source of fumes and dust.

### 5. Fire fighting measures

Non-flammable material.

### 6. Accidental release measures

Not applicable.

### 7. Handling and storage

Bands and straps must not be used for lifting.  
Use suitable PPE when handling products.  
Assess manual handling risks before lifting.  
Products should be stacked on firm level ground in dry conditions.

### 8. Exposure controls

Wear personal protection such as gloves and safety goggles when handling products.  
Some products may have a film of soluble cutting fluid after manufacture; therefore carry out personal hygiene including proper washing of hands, after contact.

### 9. Physical and chemical properties

Products are supplied in various lengths, widths and gauges.  
Metallic grey appearance.

### 10. Stability and reactivity

Products are stable under normal conditions but if subjected to high temperatures, fumes are produced.

### 11. Toxicological information

High temperatures can produce fumes.

### 12. Ecological information

No known Hazard.

### 13. Disposal considerations

Recycle or dispose of in accordance with Waste Management Licensing Regulations.

### 14. Transport information

Not classified as hazardous for transport.

**15. Regulatory information**

Products are articles and have no registration obligation under REACH.

**16. Other information**

All products must be installed in accordance with Expamet Building Products' published instructions.

Where structural products are to be removed from an existing installation, care must be taken to ensure that the procedure followed does not compromise the loading/installation restrictions applicable to the products.

Actual fixing installations must comply with current Health and Safety requirements.