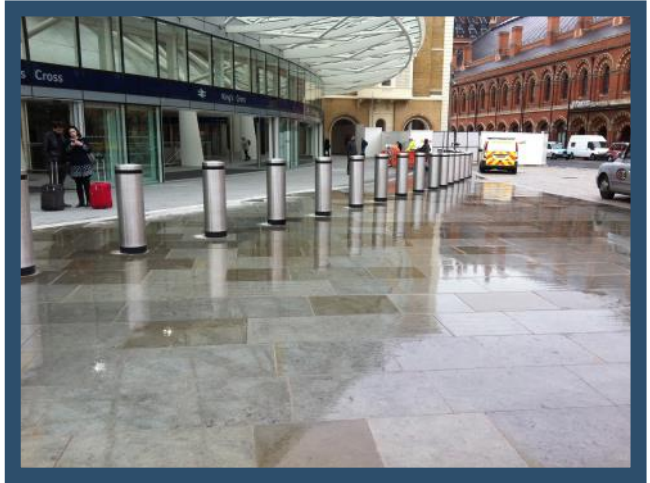
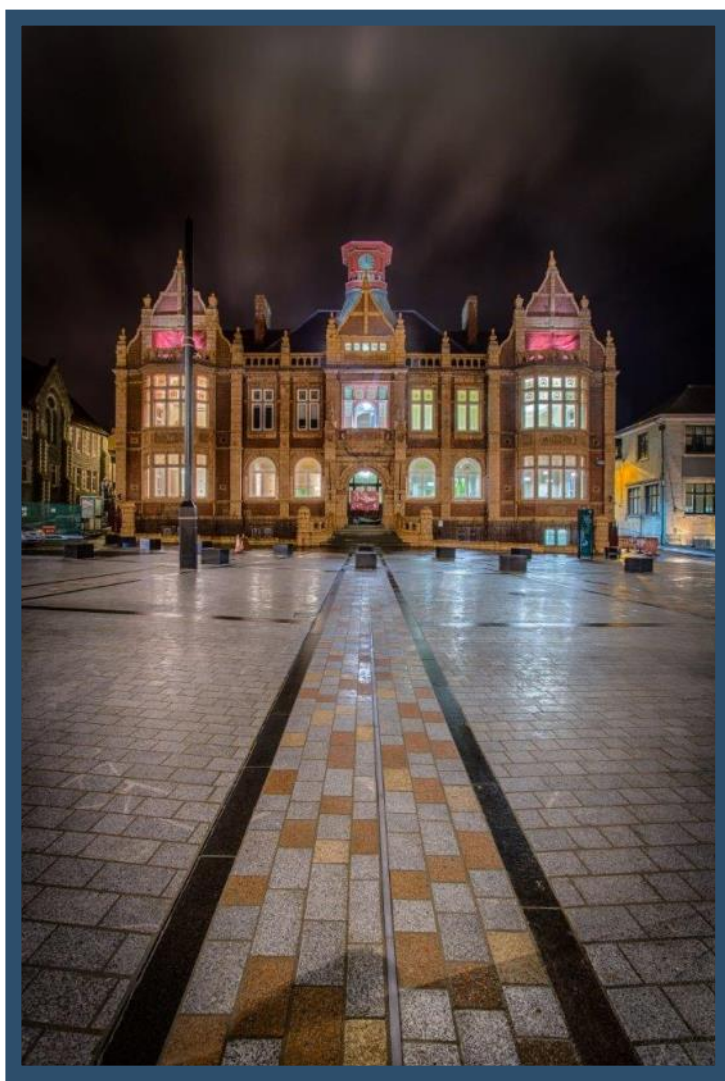




Natural Stone

Landscaping products



W www.bbsnaturalstone.com

T 01455 559474

E sales@bbsgraniteconcepts.com



BBS Group 2016

Contents

The Process	2
Introduction	3
Granite	4
Sandstone	6
Porphyry	8
Caithness Flagstone	10
Welsh Blue Pennant	12
Limestone	14
Scottish Whinstone	16
Audits & ETI	18
Technical Data Sheets	19
Product Range	20



The UK's leading supplier of natural stone from around the world...

The Process >



CAD Design/Technical Advice



Block Extraction



Production



Stockyard



Installation



Finished Project

Introduction >

BBS are a privately owned company who specialise in the sourcing, manufacture and provision of natural stone products. The company has developed to be one of the leading UK suppliers in the hard landscaping field and has been involved with many prestigious projects including Regent's Place, London and St. Andrew's Cathedral, Glasgow.

Our total commitment to individual customer needs from initial conception advice through to actual delivery and ongoing sales back-up, provides a total solution for natural stone.

Design and Technical Services

We offer a full in-house CAD and technical service to ensure that assistance on design detail is provided to all the projects that we are involved in.

Natural Stone Resources

We have vast guaranteed natural resources. This coupled with state of the art diamond saws and production facilities enables us to meet the demands of any project, however complex.

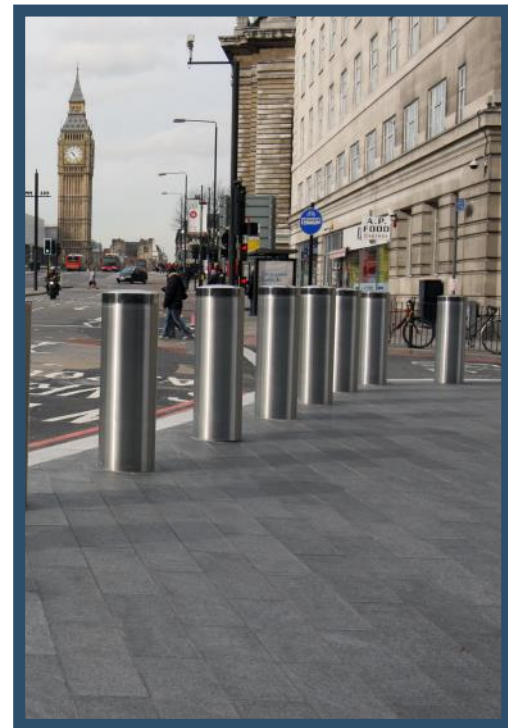
Product Range

BBS have an exclusive range of natural stones which can meet any technical or aesthetic requirements. The colours range from deep black through a full spectrum to pure white. All of our stones have been laboratory tested to British and European standards.

Clients

We have successfully worked with all types of client. Specifiers include local authorities, architects, commercial clients and private individuals. We also work with numerous contractors throughout the UK and further afield.

We believe that our expertise in the natural stone industry is unrivalled and coupled with outstanding service, provides our clients with the winning formula.



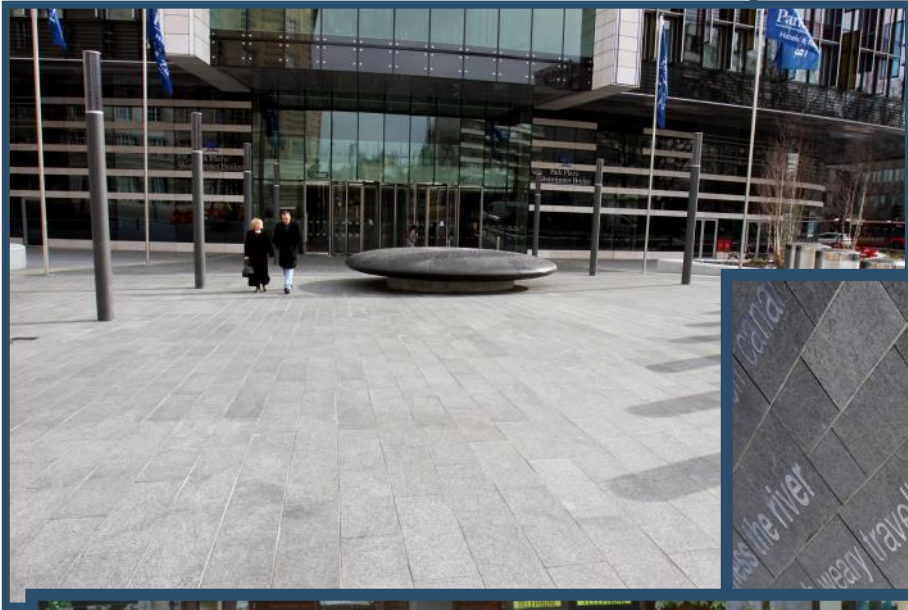
Granite >

At BBS Granite Concepts, we are able to source granites from Europe, South America, Africa, India and the Far East, with the result that we can satisfy the requirements of even the most complex projects. Because of its excellent technical characteristics, granite is widely acknowledged as one of the premium hard landscaping and construction materials available today.

These images show some of the colours and textures available, although you may prefer a sample of your chosen stone to be sent to you.

Opposite page: Mixed Chinese granite outside the Old Town Hall, Merthyr Tydfil, Wales.

This page: (from the top) G345 granite quarry, bespoke G654 bench in Brixton London, granite paving & planters outside Park Plaza Hotel— Westminster Bridge, BBS granite paving with steel inserts at Helix Park in Falkirk Scotland, Stirling Town Centre mixed granites including XR Red and G684 and G654 benches.





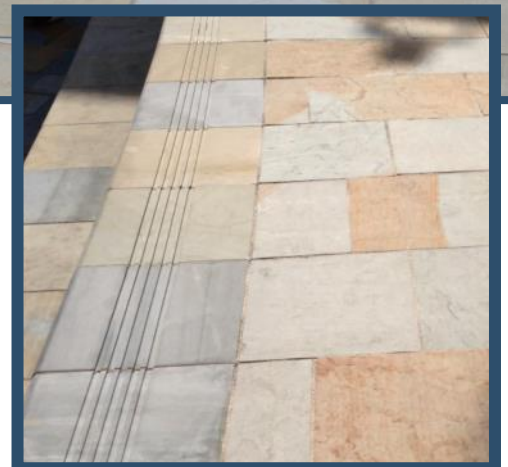
Sandstone >

Sandstone has been a very large part of the construction industry for centuries and split or riven paving remains a popular choice today for commercial conservation projects with the domestic market now taking a greater interest. Some diamond-sawn sandstones can be textured by flaming the surface whilst others are shotsawn, sandblasted, picked or chiselled to achieve a slip resistant finish.

BBS supply traditional Yorkstone, but as demand has increased, the industry has had to look to importing sandstone to keep up with the constantly growing need. We have sourced a technically and visually equivalent material available in sawn, flamed and sandblasted finish and can be manufactured into tactile paving if required.

Opposite page: Chevin sandstone at the Skainos building in East Belfast.

This page: (from the top, clockwise) Chevin Chinese sandstone in Pickering, Chinese sandstone near the George Best Corner in Belfast, sandstone used for tactile paving and step units, BBS Whitworth Yorkstone outside King's Cross and St Pancras Stations in London, Whitworth paving at Regent's Place in London.





Porphyry >

For projects needing an edge of quality or subtlety of tone, porphyry is the perfect choice and is popular as an architectural stone with planners and specifiers. It is an ideal surfacing material for walkways and town regeneration schemes but also lends itself well to domestic applications. It has high compressive strength and density and can be sourced in various colours, in particular earthy tones of grey, brown, rust, buff and violets. Porphyry can be found in various countries around the world although Italy has become the main attraction, in particular the north. Other countries able to supply porphyry include China and Argentina.



Opposite page: Italian porphyry laid in Kinross High Street.

This page: (from the top, clockwise) Italian porphyry quarry, Stockton High Street, Italian porphyry in a private residence, Bradford City Centre, porphyry paving at a private residence.





Caithness Flagstone >

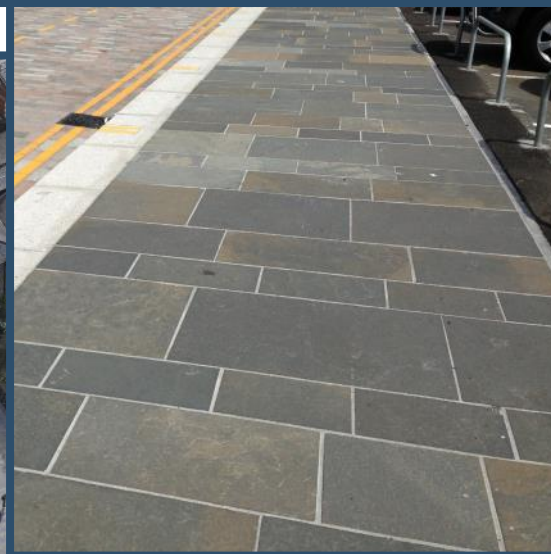
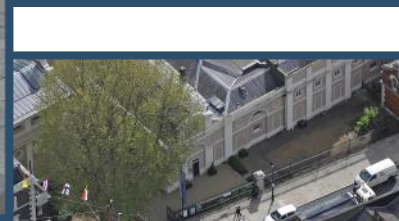
Caithness flagstone is one of the rarest paving stones in the world and comes from the Highlands of Scotland. It can be split to precise bed thicknesses giving Caithness its distinctive, unique riven finish. Caithness flagstone sits well in our range of indigenous products like Scottish Whinstone which is often used in conjunction, for kerbs and features. Caithness is the perfect choice for paving, setts and bespoke street furniture.

A&D Sutherland Ltd is the country's largest supplier of Caithness Flagstone Products and have owned and operated Spittal Mains Quarry since 1966. BBS has the only supply chain partnership agreement with A & D Sutherland and this is the last remaining active quarry in Spittal.



Opposite page: Caithness stone cladding on a bespoke water feature in Pancras Square, London.

This page: (from the top, clockwise) The Caithness Quarry in Spittal, Caithness flagstones in Glasgow City Centre, paving in Govan, open mix flagstones at the Cutty Sark in Greenwich London, Caithness setts in Newcastle.



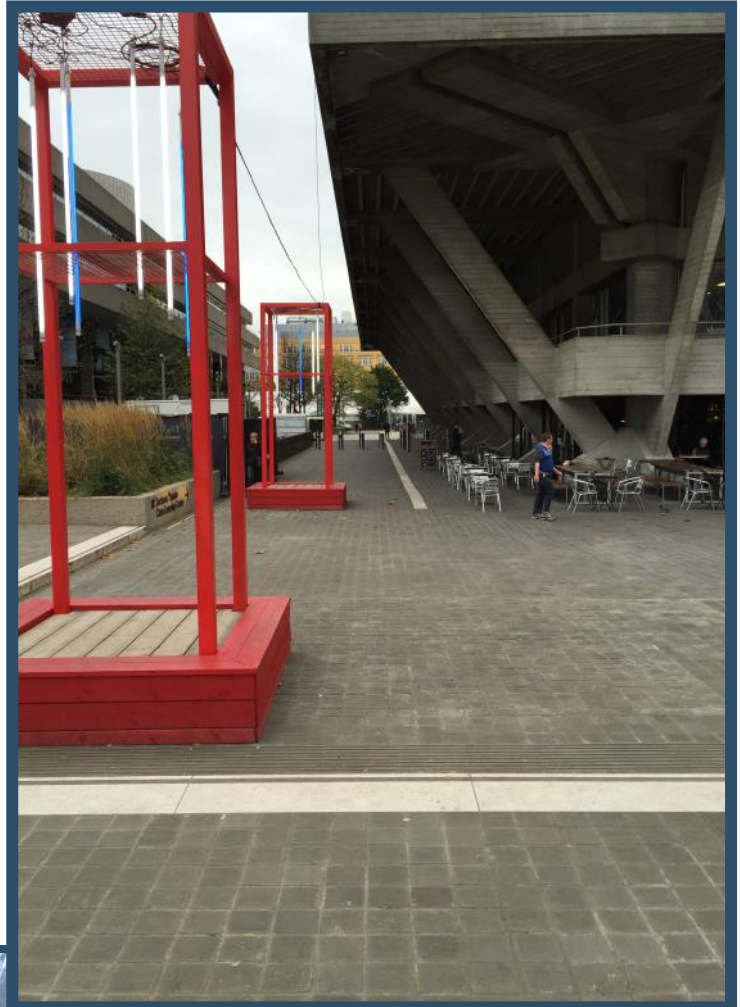


Welsh Blue Pennant >

Welsh Pennant is a hard local stone used in South Wales and the South West of England for paving, kerbing and walling. Traditionally the paving used has been a riven material but due to availability this has generally been replaced by a sawn and flame finished product. The nature of the material produces a heavily flamed finish that almost replicates the riven appearance, and comes in a range of colours from light grey through to a fairly dark grey, with other highlighted tones of browns and oranges. The sawn six sides and flamed top produces an old Victorian style appearance, and can blend with the traditional riven footpaths. Pennant is renowned for its durability and its high frost and slip resistance.



*Opposite page: Welsh blue pennant paving in Abergavenny.
This page: (from the top, clockwise) Pennant blocks at the quarry, Welsh pennant setts outside the National Theatre in London, Welsh pennant setts ready to be laid, setts at the National Theatre in London, paving at Swansea castle.*



GURKHA CORNER RESTAURANT
ABERGAVENNY
WELSH-INDIAN TRADITIONAL RESTAURANT AND JUSSIEU CENTRE
CATERING AND TAKE AWAY SERVICE
TEL: 01872 855 800

OPEN

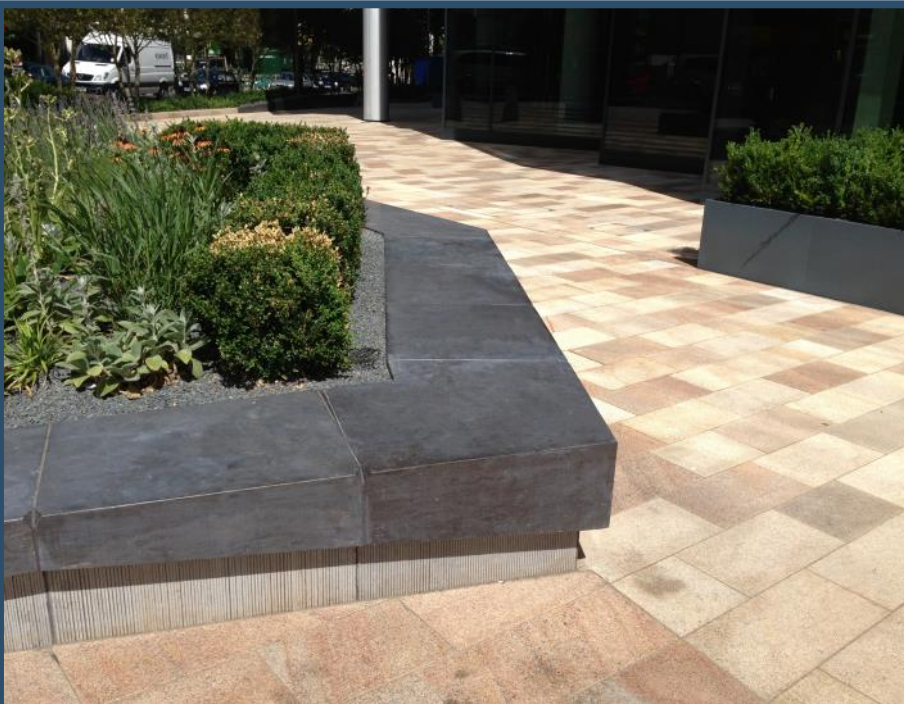


Limestone >

Limestone can be used in a wide range of interior and exterior building applications. Hard limestone can be manufactured to produce a polished, honed or flamed finish. It creates a tough but sophisticated surface that appeals to many and varied construction applications which require durability and character. There are many varieties of limestone ranging from whites through beiges, blues and black, although some may be suited for one purpose better than another. Please contact us should you be unsure of which type to choose.



*Opposite page: Vietnamese limestone at the Warrior Square Gardens in Southend town centre.
This page: (from the top) Limestone quarry, limestone reinstatement at the Church of Scientology on Curzon Street in London, blue limestone street furniture including planters and benches at Hammersmith Grove, Portuguese limestone paving.*





Scottish Whinstone >

Whinstone is one of the hardest stones available and the material supplied by BBS is quarried throughout central Scotland. It is currently available from three different quarries, the three forms are red fleck, black and dark grey. Along with the ability to be supplied to site in three weeks, Scottish whinstone costs are on a parallel with similar European imported products because of the investments we have made in its production.



Opposite page: Scottish Whinstone paving.

This page: (from the top) Raw whinstone block, whinstone steps at Ballynahinch, shot blasted copes in Ballynahinch Town Centre, Whinstone street furniture with engraving and the Grass Market in Edinburgh.





Audits and The Ethical Trading Initiative >

BBS Granite Concepts has always had the supply workforce at the forefront of our minds, believing a fair price paid by us will increase the standard of the working conditions for the suppliers. As a company, we invest in supplier development ensuring H&S, PPE and general working conditions are as high as possible.

Along with BBS Brick & Stone, BBS Granite Concepts Ltd have already built a proud reputation on Ethical Trading, brought about by a strict policy. Continuous visits throughout the year ensure welfare and working conditions in overseas operations are of the highest standards possible. Trading with potential suppliers cannot commence until our expectations and standards of supply have been discussed and agreed.

Having been independently audited by varying UK interests, our suppliers' sustainability has shown an extremely high standard in all areas of manufacture and supply of natural stone.



ETI Base Code



The ETI Base Code is an internationally recognised set of labour standards based on ILO conventions. It is used by ETI members and others to drive improvements in working conditions around the world.

www.ethicaltrade.org



Employment is freely chosen



Freedom of association and the right to collective bargaining are respected



Working conditions are safe and hygienic



Child labour shall not be used



Living wages are paid



Working hours are not excessive



No discrimination is practiced



Regular employment is provided



No harsh or inhumane treatment is allowed

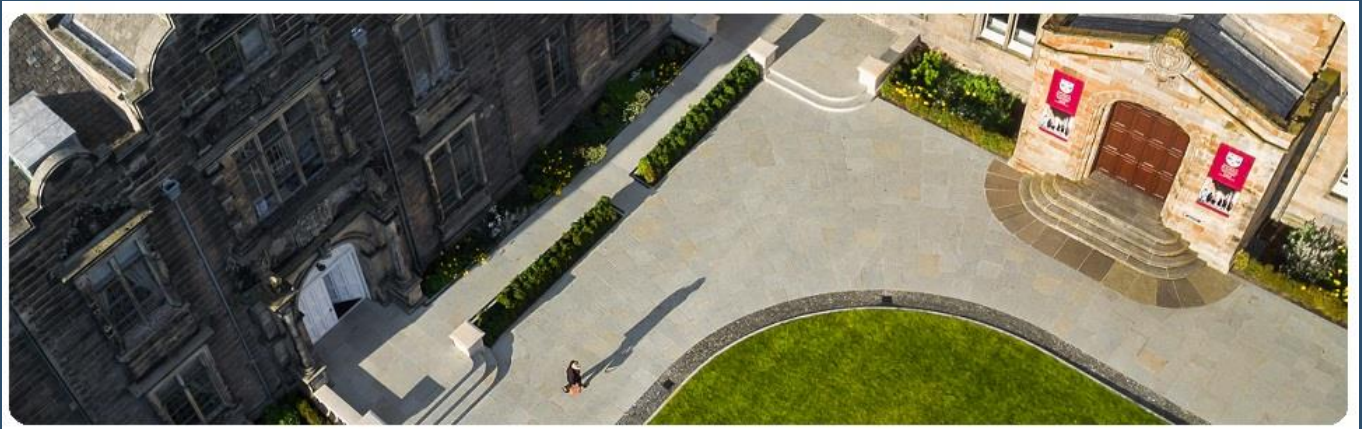
The Ethical Trading Initiative is a ground-breaking alliance of companies, trade unions and voluntary organisations. We work in partnership to improve the working lives of people across the globe who make or grow consumer goods - everything from tea to T-shirts, from flowers to footballs and granite to sandstone.

BBS GRANITE CONCEPTS LTD are proud to be a member of the alliance, and add our own best wishes to the group for it's future success worldwide. For further information on how our alliance is working to make a difference, please visit www.ethicaltrade.org



Product Range

- Kerbs
- Setts
- Paving
- Walling
- Copings
- Benches
- Tactile Units
- Steps
- Cladding
- Spheres
- Bollards



BBS Granite Concepts Ltd

Kimcote House
Walton Road
Kimcote
Leicestershire
LE17 5RU

T: 01455 559474

F: 01455 554118

E: sales@bbsgraniteconcepts.com

W: www.bbsnaturalstone.com



BBS Brick & Stone Ltd

Trident House
106 Barnsley Road
Sandal, Wakefield
West Yorkshire
WF1 5NX

T: 01924 241100

F: 01924 250530

E: sales@bbsbrickandstone.co.uk

W: www.bbsnaturalstone.com



BBS Group 2016