



OmniCarePLUS Multi-Exchange EVC

Installation Instructions



Manual name: OmniCarePLUS

Issue: I

ECR: n/a

Date of issue: May 2020

© May 2020 Baldwin Boxall Communications Limited

Wealden Industrial Estate
Farningham Road, Jarvis Brook
Crowborough
East Sussex
TN6 2JR
UK

Telephone: +44 (0)1892 664422

Facsimile: +44 (0)1892 663146

Email: mail@baldwinboxall.co.uk

Website: <http://www.baldwinboxall.co.uk>



This equipment has been designed and manufactured to conform to the following EC Standards:

EMC: Emissions EN55032:2015

EMC: Immunity EN50130-4:1995 +A1:1998 +A2:2003

Safety: BS EN 62368-1:2014 +A11:2017

Failure to use the equipment in the manner described in the product literature will invalidate the conformity.

A “Declaration of Conformity” statement to the above standards and a list of auxiliary equipment used for compliance verification is available on request.

Amendment Record _____	vii
Proprietary Notice _____	vii
General Information _____	viii
Environmental Conditions _____	viii
Safety and Statutory Information _____	ix
Comments _____	x

Technical Description

Introduction _____	1
Technical Specifications _____	2
Local Control Panels - - - - -	2
Remote Units - - - - -	3
Network Control Stations - - - - -	3
BVOCTSHUB EVC Network Hub- - - - -	4
BVOCTSINT PC Interface - - - - -	5
Embedded PC - - - - -	6
Battery Box (BVOBATT & BVOBATT2) - - - - -	6
Controls and Indicators _____	7

Overview of System Design Requirements

OmniCare Design Requirements _____	9
OmniCare Plus Design Requirements _____	9
Recommendations for "Master Station" Location _____	10

Hardware Installation

Installation Overview _____	11
Local Control Point Installation _____	12
Remote Unit Installation and Connection - - - - -	12
Control Panel Installation (OmniCare Site Cabling) - - - - -	12
Battery Box Installation- - - - -	12
Delayed Call Output - - - - -	12
Network Connection - - - - -	13
OmniCare Plus Network Installation _____	13
BVOCTSHUB Network Hub Installation _____	14

BVOCTSINT PC Interface _____	15
Embedded PC _____	15
BVOCTSPCM/D Network Control Station _____	16

Commissioning

Commissioning the Local Control Point(s) _____	17
Commissioning the EVC Network _____	17
Commissioning the Network Control Point(s) _____	17
Administrator Settings - - - - -	18
Editor Settings - - - - -	22

Tone Configuration

Tone Configuration (remote units) _____	23
---	----

Operation

Main Screen _____	25
System Status - - - - -	26
Console Status - - - - -	26
Clean Screen - - - - -	26
View Call History - - - - -	26
View Fault History - - - - -	27
View Call Priority - - - - -	27
Touch to Enable - - - - -	27
Export System Logs to File - - - - -	27
Print System Logs - - - - -	28
Make All Call Broadcast - - - - -	28
To Answer Incoming Calls _____	29
To Answer an Incoming DRS Call - - - - -	29
To Answer an Incoming Fire Telephone / Stewards Telephone Call- - - -	30
To answer a call from a DTA (Disabled Toilet Alarm) - - - - -	30
To Clear "Occupied" Disabled Refuge units - - - - -	31

Fault Finding

Introduction _____	33
Local Control Point Issues _____	33

Network Control Point Issues	33
------------------------------	----

Maintenance

Maintenance & Routine testing	35
-------------------------------	----

Cables

Cable Requirements	37
--------------------	----

Addendum

BVOCTSnn (08-64 Way) Control Panel	40
BVOBATT Battery Enclosure	41
BVOBATT2 Battery Enclosure	42

AMENDMENT RECORD

Change Note Number	Nature of Amendment	Date of Amendment
n/a	Issue 1: Initial Release	May 2020

PROPRIETARY NOTICE

All data and information contained within this manual is of a proprietary nature with the exclusive title to the same held by Baldwin Boxall Communications Limited. The possession of this manual and the use of the information is, therefore, restricted only to those persons duly authorised by Baldwin Boxall Communications Limited.

Do not reproduce, transcribe, store in a retrieval system or translate into any language, any part of this manual without the prior permission of Baldwin Boxall Communications Limited.

In the interest of continual product development, Baldwin Boxall Communications Limited reserves the right to make changes to product specification without notice or liability. Use of Baldwin Boxall Communications Limited products as critical components in life support systems is not authorised except with express written approval from Baldwin Boxall Communications Limited.

GENERAL INFORMATION

Personnel who install, maintain or repair this equipment must read the safety information below before starting work.

This Manual contains Warnings, Cautions and Notes.

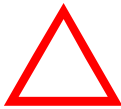
Warnings describe potential threats to health or life, e.g.



WARNING

Before attempting to remove this component, ensure the Mains Power Supply and Battery Backup have been disconnected.

Cautions describe potential threats to the equipment, e.g.



CAUTION

Notice must be taken of all cautions.
If a Caution is ignored the equipment may be damaged.

Notes are statements that are useful to the user in the context of a particular section of the manual, e.g.



NOTE: This is an example of a note.

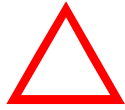
ENVIRONMENTAL CONDITIONS

This equipment must not be installed in an area that is subject to a corrosive atmosphere, excessive moisture or may allow water or other liquids to come into contact with the unit or its external connections. Unless otherwise stated, all items are IP30.

AC Supply Voltage	230V - 15% +10% RMS 50Hz AC
DC Supply Voltage	18V to 33V (Nominal 24V) DC
Temperature (Operating & Storage)	0°C up to +40°C
Humidity Range	0% - 90% Non-Condensing

In the close proximity of some radio frequency transmitting devices, the signal to noise ratio of this product may be reduced. If this occurs, re-location of the equipment or the signal cables is recommended.

SAFETY AND STATUTORY INFORMATION



CAUTION

These Safety Precautions apply to assembled systems, however they may not all be applicable to every item within that system.

Failure to follow these instructions and guidelines may cause personal injury and/or damage to the equipment.



WARNING

This equipment is intended for continuous operation and as such should be permanently connected to the mains supply.

This unit does not contain an external mains switch.

For servicing, an all-pole Switch / Circuit Breaker with a separation of 3 mm in each pole should be incorporated in the electrical supply spur feeding the unit, and this must be suitably marked to prevent inadvertent or accidental usage.



WARNING

Always ensure that this equipment is correctly earthed by connection to an AC mains supply with a protective earth connection.



WARNING

If Functional Testing, Maintenance, or Repair is to be completed with the Mains Power (and/or battery backup) connected then this should only be undertaken by personnel who are fully aware of the danger involved and who have taken adequate precautions and training.

Terminals marked with the "High Voltage" symbol are considered hazardous and the external wiring connected to these terminals requires installation by suitably trained personnel.



WARNING

The 24V DC batteries used within this system can deliver extremely high currents that can cause fire or burns.

Care should be taken to ensure tools or jewellery etc. are prevented from causing a Short Circuit.



WARNING

Batteries shall not be exposed to excessive heat such as sunshine, fire or the like.



WARNING

If battery isolation / disconnection is required then the 0V cable to the chassis should be disconnected first.



WARNING

Danger of explosion if battery is incorrectly replaced.
Replace only with the same or equivalent type.
Dispose of battery carefully to avoid environmental damage.
Do not dispose of battery in a fire.



CAUTION: ELECTRO-STATIC SENSITIVE DEVICES

Observe the relevant precautions for the protection of Electro-static Sensitive Devices when handling this equipment.



CAUTION

This product must only be disposed of in accordance with the WEEE directive.

COMMENTS

Comments regarding the content of this manual are welcome and should be addressed to mail@baldwinboxall.co.uk.

I Technical Description

I.1 INTRODUCTION

The OmniCarePLUS Multi-Exchange EVC comprises a network of BS5839-9 compliant “local” systems, each “local” system can control upto 64 outstations, and can be operated as a standalone EVC system.

With the addition of the OmniCarePLUS network enabling the installation of much larger systems, upto 126 Local Control points (each controlling upto 64 outstations) can be networked together making it possible to connect upto a maximum of 8064 outstations.

The benefit of OmniCarePLUS is the ability to communicate with any outstation on any part of the network from a single “point”. This sitewide control is via graphical touch screen(s) called Network Control Stations (NCS).

The network can be either copper or fibre (either multimode or single mode) but must be Fire Rated, Enhanced cable configured as a loop. All site cables and connections, including internal interfaces, chargers & batteries are fully monitored for faults.

Each local control point is supplied with a separate battery box.

1.2 TECHNICAL SPECIFICATIONS

Please refer to the OmniCare installation Manual for the majority of Technical Specifications. Where there are OmniCarePLUS specific items they will be detailed within this manual.

1.2.1 Local Control Panels

Control Panels	
System self-monitoring	BS5839 compliant
Remote signalling of fault	Volt-free contact, closing/opening set on installation
Indicators	Occupied, call, fault, power, charger, speech level
Transmission capability	Half-duplex (DRS remotes) either voice switched or by PTT (controlled at the Control Panel). Full Duplex (Fire Telephones)
Power supply	110V / 230V AC autoswitching, battery backed with built in batteries & charger
Power consumption (VA)	10VA + 1VA per remote connected
Dimensions (W x H x D)	410mm x 455mm x 200mm (8-64 way)
Bezel dimensions (W x H x D)	461mm x 506mm x 25mm (8-64 way)
Bezel Cutout dimensions W x H	420mm x 465mm (8-64 way)
Knockouts	20mm diameter in top and top/rear
Security	Lockable glazed door
Weight (not including batteries)	26kg (8-64 way)
Temperature Range	-10 to +30°C (storage and operating)
Humidity Range	95% Non Condensing
Network Connections	Either Copper (4 cores) or Fibre (single or multimode)

Figure 1.1 — Typical OmniCarePlus Local Control Panel



1.2.2 Remote Units

Please refer to the OmniCare installation manual for the technical specifications of the remote units.

1.2.3 Network Control Stations

The Touchscreen is available with either a monitor mounted handset or a desk mounted handset.

Figure 1.2 — Typical BVOCTSPCM (with attached handset)



Network Control Stations	
Power supply	100V / 240V AC 50 / 60 Hz autoswitching
Power consumption	0.7A (18.1W Typical)
Dimensions (W x H x D)	BVOCTSPCM (with monitor mounted handset) 580mm x 400mm x 260mm
	BVOCTSPCD (monitor with desk mounted handset) 500mm x 400mm x 220mm
	Desk mounted handset 70mm x 220mm x 70mm
Weight	BVOCTSPCM (with monitor mounted handset) Approx 5.1kg
Weight	BVOCTSPCD (monitor with desk mounted handset) Approx 8kg
Connections	1x HDMI, 1x USB, 1x RJ12 (cables supplied)
Transmission capability	Half-duplex (DRS remotes) either voice switched or by PTT (controlled at the Control Panel). Full Duplex (Fire Telephones)

I.2.4 BVOCTSHUB EVC Network Hub

The EVC Network Hub provides the network terminations and battery backup for the network to provide power in case of mains failure.

Figure 1.3 — Typical EVC Network Hub



EVC Network Hub	
Power supply	200-230V AC 50/60 Hz
Power consumption	1.35A (Max)
Dimensions (W x H x D)	500mm x 725mm x 200mm
Weight	36kg (including batteries)
Connections	2 x CAT5 Cable to BVOCTSINT
Network Connections	Fire Rated, Enhanced Cable (either Copper or Single / Multi mode Fibre)

I.2.5 BVOCTSINT PC Interface

The PC Interface provides the connections between the Network Hub and Embedded PC. The PC Interface must be located within 50m of the Network Hub and within 5m of the Embedded PC.

Figure I.4 — Typical BVOCTSINT PC Interface



BVOCTSINT PC Interface	
Power supply	Nominal 24V DC from Embedded PC & BVOCTSINT
Power consumption	1A (Max)
Dimensions (W x H x D)	270mm x 200mm x 200mm
Weight	2.6kg
Connections	2 x CAT5 Cable to BVOCTSHUB 1x RJ12 & 1 x USB

1.2.6 Embedded PC

The Embedded PC must be located within 5 meters of the PC Interface and within 2 meters of the BVOCTSPCM/D Touchscreen monitor.

Figure 1.5 — Typical Embedded PC



Embedded PC	
Power supply	12V DC from Inline 90-264V AC Adaptor
Power consumption	36W (Max)
Dimensions (W x H x D)	200mm x 50mm x 120mm
Weight	2.6kg
Connections	1x USB to BVOCTSINT 1x USB to BVOCTSPCM/D 1x HDMI to BVOCTSPCM/D

1.2.7 Battery Box (BVOBATT & BVOBATT2)

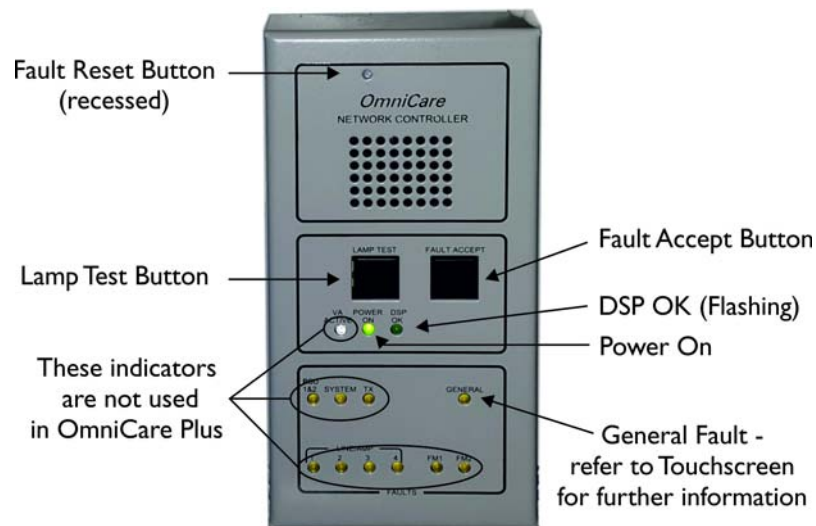
Each Local Control Point is supplied with a Battery Box, the size depends on the batteries required. Refer to Section A.2 on page 41 for dimensions and mounting details.

The battery boxes are designed to fit directly under the Local Control Point. If for any reason this is not possible then extra cabling and additional protection (in line fuses) will be required.

I.3 CONTROLS AND INDICATORS

The OmniCarePlus Local Control Point indicators are identical to the standard control panel, with the addition of an extra set of indicators and controls used for network operation.

Figure I.6 — OmniCarePlus Local Control Point Indicators



NOTE: If a fault is announced then pressing the "Fault Accept" button will silence the fault sounder. Depending on the type of fault it may also be necessary to press the recessed "Fault Reset" button to clear any latched faults.

A latched fault will occur after powering the Control Panel and it will be necessary to press the recessed fault reset button to clear the fault.

2 Overview of System Design Requirements

2.1 OMNICARE DESIGN REQUIREMENTS

Please refer to the OmniCare Installation Manual for the design requirements of each Local OmniCare system.

2.2 OMNICARE PLUS DESIGN REQUIREMENTS

The OmniCare Plus Network system design must include each local OmniCare Control Panel, each Network Control Station and any EVC Network Hubs that may be required.

The network cable requirements for the OmniCare Plus network are detailed in the BVRDNET Installation Manual. This includes the type of cables required, the maximum distance between nodes on the network and basic fault finding.

2.3 RECOMMENDATIONS FOR "MASTER STATION" LOCATION

To meet the requirements of BS5839-9 each local control panel is considered a Master Station and as such their locations are defined within BS5839-9.



NOTE: For full details please refer to BS5839-9.

For the purposes of BS5839-9 compliance, the Network Control Stations are not defined as master stations.

Battery backup is supplied for each EVC Network Hub and is sufficient to ensure the network remains operational in the case of a local power failure. This meets the requirements of BS5839-9.

The Network Control Stations are outside of the scope of BS5839-9, therefore consideration should be made to provide a suitable alternative power source in the event of a local power failure.

3 Hardware Installation

3.1 INSTALLATION OVERVIEW

The OmniCarePLUS Multi-Exchange EVC system installation can be viewed as separate installation operations.

- Each Local Control Point must initially be installed and tested as a stand-alone system. The outstations and cabling for the Local Control Points can be installed and commissioned separately to the network installation..
- The OmniCarePLUS network can then be installed and each span tested (subject to the distance limitations) as required. The network configuration of the system is pre-set in the factory. Network cables & requirements are included in the BVRDNET manual.
- The Network Control Station (NCS) Hub & PC can be positioned where required and connected to the network. As more commissioned Local Control Points are connected to the network, the touchscreen configuration options and settings can then be updated to suit.

3.2 LOCAL CONTROL POINT INSTALLATION

3.2.1 Remote Unit Installation and Connection

Please refer to the Omnicare Installation Manual for details on installing Remote Units.

3.2.2 Control Panel Installation (OmniCare Site Cabling)

Please refer to the OmniCare Installation Manual for details on installing the Local Control Points (control panels). The OmniCare manual provides details on site cabling for loop cables.

3.2.3 Battery Box Installation

The Local Control Point will be supplied with a Battery Box, the size depends on the batteries required. For dimensions and mounting holes please refer to “Addendum” on page 39. These are normally installed close (i.e underneath or adjacent to) the Local Control point and come supplied with suitable cables.

Please refer to the OmniCare Installation Manual for mounting details of the battery boxes (BVOBATT & BVOBATT2).

If for any reason the battery box must be located remotely from the Local Control point then additional cabling and fuses will be required. To meet the requirements of BS5839-9 there will need to be an additional pair of cables between the battery box and local control point. These pairs must be wired disparately from each other, and both pairs of cables must be fused at both ends.

3.2.4 Delayed Call Output

The Delayed Call output feature is not available on Omnicare Plus.

3.2.5 Network Connection

The Omnicare Plus panel differs from the standard panel as there are Network Cables (copper or fibre) connected to BVRDCIF, BVRDFIF or BVRDFIFS modules in addition to the Omnicare Loop Cabling.

Figure 3.1 — Internal view of the Local Control Panel



There will be two connections for the OmniCarePlus network loop (BVRDCIF copper network interface units are shown in Figure 3.1).



NOTE: It is not necessary for these network connections to be made to commission the Local Control Point as a stand alone system.

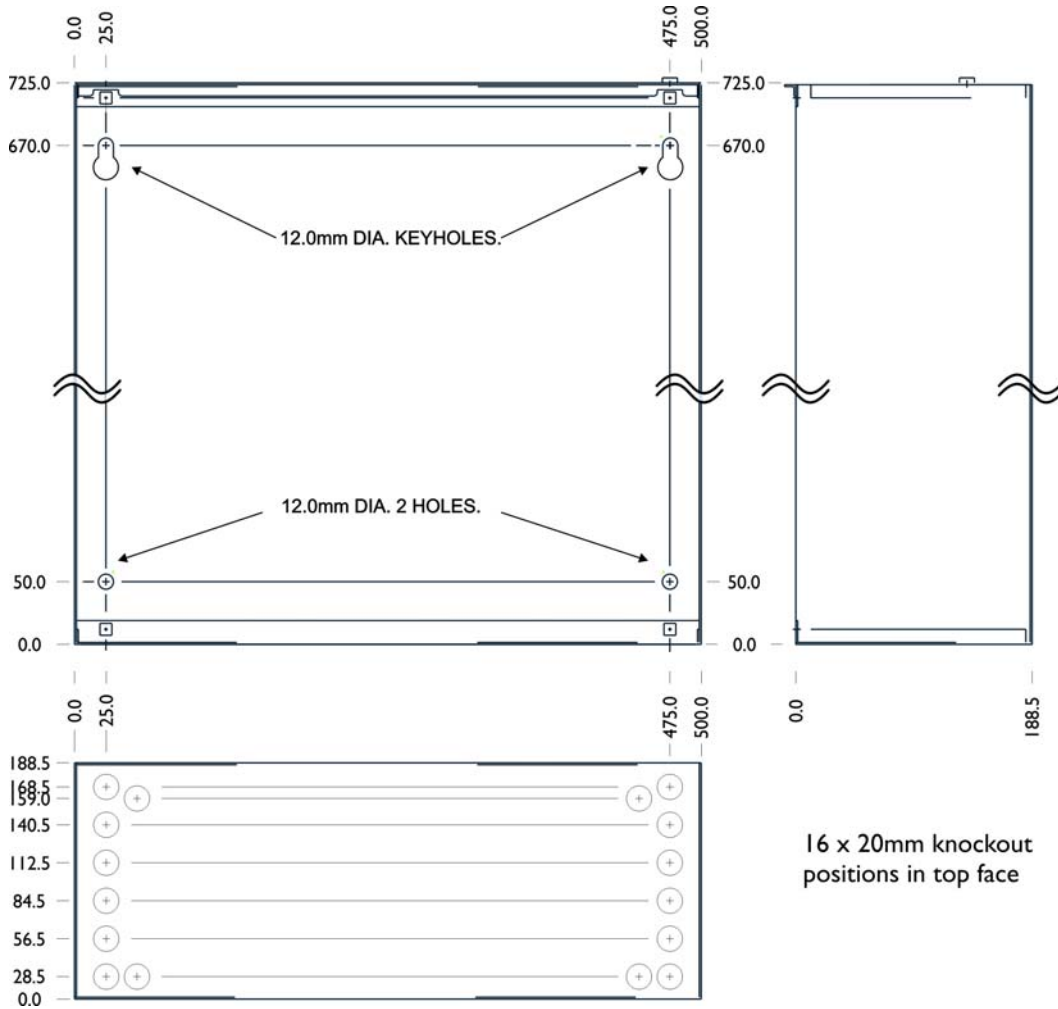
3.3 OMNICARE PLUS NETWORK INSTALLATION

Please refer to the BVRDNET Installation Manual for details on network cables and connections.

Each OmniCare Plus Local Control Point and each Network Hub contains a BVRD2M4 router and either BVRDCIF (copper interface units) or BVRDFIF / BVRDFIFS (multimode / single mode fibre optic interface units) for network connectivity. The network cables must be Fire Rated, Enhanced cable configured as a loop.

3.4 BVOCTSHUB NETWORK HUB INSTALLATION

Figure 3.2 — Dimensions and Mounting holes for Network Hub



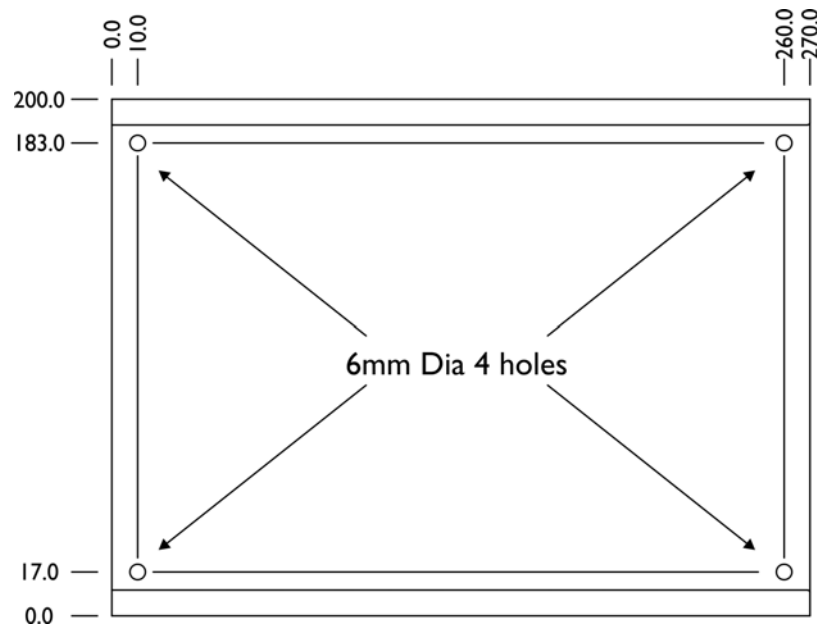
Connections and terminations between the network hub & BVOCTSINT PC Interface will be supplied within the system drawing pack.

The Network Hub must be positioned within 50meters of the BVOCTSINT PC Interface.

3.5 BVOCTSINT PC INTERFACE

The PC Interface will normally be wall mounted, and must be installed within 50 meters of the network Hub and 5 meters of the Embedded PC.

Figure 3.3 — BVOCTSINT PC Interface Mounting Holes



NOTE: It is possible to fit the PC Interface inside the Network Hub if required.

Connections and terminations between the BVOCTSINT PC Interface, the network hub and the embedded PC will be supplied within the system drawing pack.

3.6 EMBEDDED PC

The embedded PC is a desk mounted unit that must be located within 2meters of the Network Control Station. It will require a local mains supply.

Connections and terminations between the Embedded PC, the BVOCTSINT PC Interface and the Network Control Station will be supplied within the system drawing pack.

3.7 BVOCTSPCM/D NETWORK CONTROL STATION

The Network Control Station(s) are desk mounted and will require a local mains supply.

The Embedded PC must be located within 2m of the touchscreen.

Connections and terminations between the Network Control Station, the embedded PC and the BVOCTSINT PC interface are supplied within the system drawing pack.

4 Commissioning

4.1 COMMISSIONING THE LOCAL CONTROL POINT(S)

Please refer to the Omnicare Installation Manual for details on Commissioning (and fault finding) the Local Control Point(s).



NOTE: Each Local Control Point must be successfully commissioned as a stand-alone system prior to being added to a Network Control Point.

4.2 COMMISSIONING THE EVC NETWORK

Please refer to the BVRDNET Installation Manual for details on Commissioning (and fault finding) the EVC Network Cables.

4.3 COMMISSIONING THE NETWORK CONTROL POINT(S)



NOTE: Each Local Control Point must be successfully commissioned as a stand-alone system prior to being added to a Network Control Point.

Each local control point has an address assigned to it as part of the factory configuration. This address must be known to allow a console to be added to a Network Control point.

The configuration of the Local Control Point (e.g. the number of Remote units, their type and their position on the console) must also be known.

There are two different processes required to Commission the Network Control Point and these are detailed in the following sections.

The "Administration" settings determine the network settings & configuration options, and the "Editor" settings determine how the Remote Units are displayed on the screen.

4.3.1 Administrator Settings

Run the OmniCare Plus software using the "OmniCare Plus - Admin" shortcut.

Figure 4.1 — OmniCare Plus - Admin icon



This allows access to the Administration options within the OmniCare Plus software.

When the software opens, press the "Administrator Tools" button (located at the bottom right hand side of the screen).

Figure 4.2 — Administrator Tools button



NOTE: Care must be taken if entering the Administrator tools section, as incorrect settings may prevent the system from operating correctly.

4.3.1.1 Administration Settings (Settings Tab)

Figure 4.3 — Administration Settings (Settings Tab)

- Set the correct Comport for the Router & OmniCare (refer to Device Manager for details).



NOTE: In Device Manager six COM ports will be displayed. The first four COM ports (1-4) are not used. The "Prolific" Serial Converter is the Router COM Port and the remaining port is the OmniCare port.

- The Baudrates are factory preset and should not be altered.
- The Poll rate is factory preset and should not be altered.
- Set the correct PC Control address.



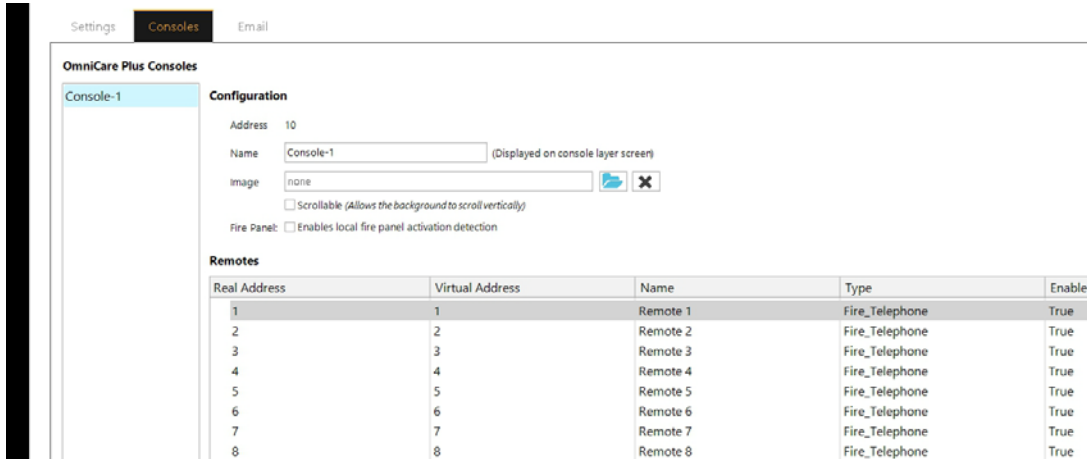
NOTE: Each PC must have a unique address on the network, starting with address "0". The maximum number of PCs is 10 (i.e. address 9).

- Select a custom ringtone if required.
- Enter the correct Site Name
- Load a background image (if required)
- Tick the "Fire Panel" option if the local control panel has a local fire panel input (i.e. system remains in standby until activated by the fire panel).

Select the "Console" Tab.

4.3.1.2 Administration Settings (Console Tab)

Figure 4.4 — Administration Settings (Console Tab)



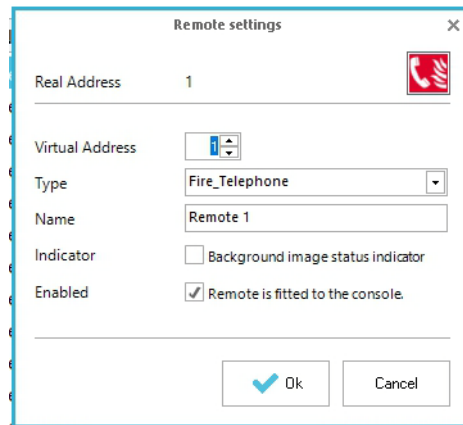
Configuration Options

- Enter the correct name for the console
- Load a background image specific to this console (if required)
- Tick the "Fire Panel" option if the local control panel has a local fire panel input (i.e. system remains in standby until activated by the fire panel).

Remotes

- Double click on the a Remote to enter the Remote Settings

Figure 4.5 — Remote Settings



- Set the Virtual Address as per the console configuration (i.e. the button that illuminates on the console when the remote calls in)



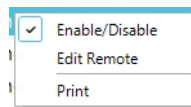
NOTE: If the Virtual Address is not required then it must match the Real Address or conflicts will occur.

- Select the correct type of Remote Unit from the dropdown options.
- Enter the correct name for the Remote Unit
- If required, select the Background Image status indicator
- Tick the box if the Remote is fitted to the console (this is the same option as "Enable / Disable" shown in the right click menu).
- When the Remote Unit has the correct settings click on "OK".

When all Remote Units are correctly identified and have the correct type associated then unused Remote Units must be disabled.

Right click on an unused Remote Unit and the shortcut menu options will be shown:

Figure 4.6 — Right click Shortcut options



To disable the Remote Unit ensure "Enable/Disable" is de-selected (this is the same option as "Remote is fitted to the console" in the Remote Settings).

If required, the "Remote Settings" can be entered by selecting "Edit Remote".

When all settings are complete press the "Save All Changes" button and exit the Administration settings.

Figure 4.7 — Save All Changes button



4.3.2 Editor Settings

Run the OmniCare Plus software using the "OmniCare Plus - Editor" shortcut.

Figure 4.8 — OmniCare Plus - Editor icon



The Editor settings allow the user to move the icons for Remote Units to the required position on the screen.

By default there are 64 Remote Units available and these will all be displayed if all Remote Units are available in Administration.

If any Remotes have been disabled they will not be available in the Editor View.

- Double click on the required Console to edit the view.

Figure 4.9 — Console View and "Save Changes" button



- Initially, all icons are "stacked" on top of each other and only the highest ID Remote is shown. To view all available Remote Units press the "Align Remotes" button.

Figure 4.10 — "Align Remotes" button



- All available Remotes will then be displayed.
Select the remote to move by pressing and holding the relevant Icon.
- When all Remotes are in the correct location return to the main view.
- It is also possible to move the Console Icon on the main screen. When finished press the "Save Changes" button and exit the editor.

5 Tone Configuration

5.1 TONE CONFIGURATION (REMOTE UNITS)

Please refer to the Omnicare Installation Manual for details on Tone Configuration for remote units.

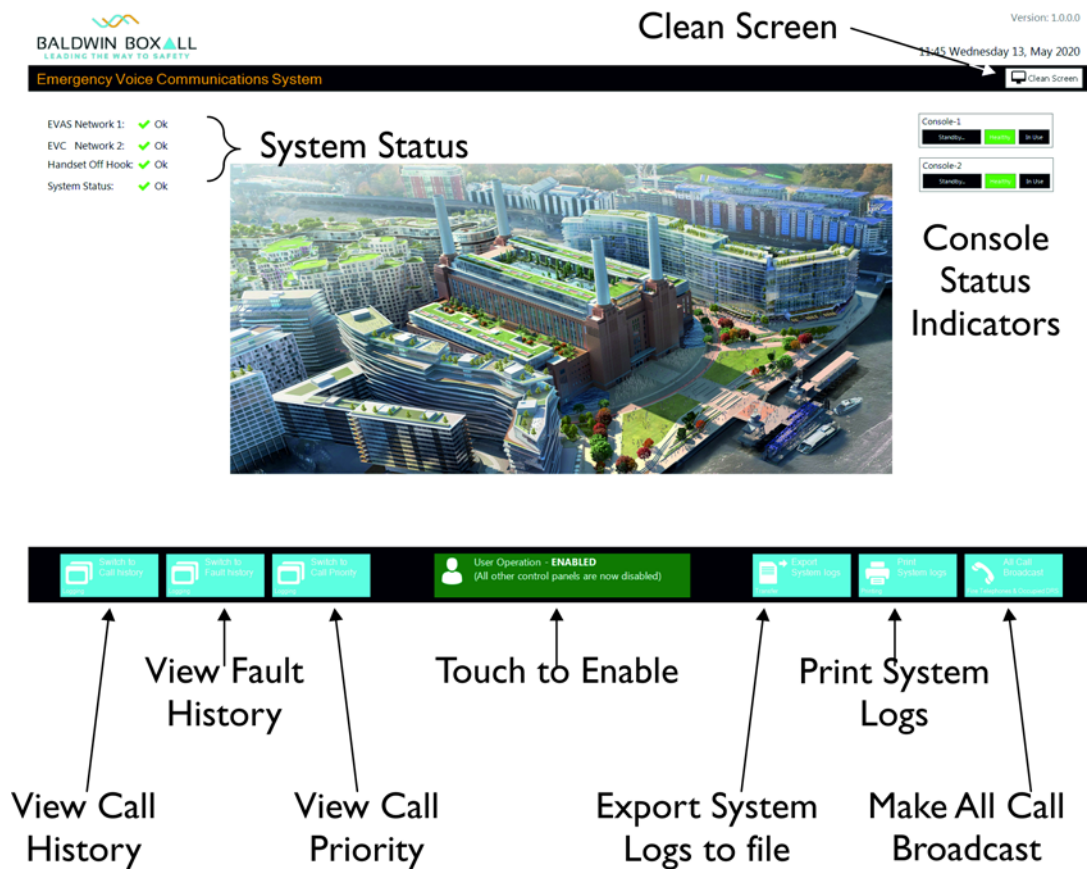


NOTE: Tone Configuration must be completed before commissioning Network Control points.

6 Operation

6.1 MAIN SCREEN

Figure 6.1 — Typical OmniCare Plus Main Screen



The different options are explained in the following sections.

6.1.1 System Status

This shows the current status of the Network Control Point and indicates if any faults have been detected.

Figure 6.2 — System Status - Healthy Icon (No Faults)



System Status:  Healthy

Figure 6.3 — System Status Faulty Icon

System Status:  Faulty

If a fault is being announced it should be investigated and rectified as it could prevent the system from operating correctly.

Refer to View Fault History to view current faults.

6.1.2 Console Status

Shows the current status of the relevant console.

If the current status shows "Faulty" then it should be investigated and rectified as it could prevent the system from operating correctly.

6.1.3 Clean Screen

Press this button to disable the touchscreen functionality for a limited time to enable cleaning.

6.1.4 View Call History

Opens the Call History where a record of every call is maintained.



NOTE: All answered calls are recorded.

To listen to a recording double tap on the call.

6.1.5 View Fault History

Opens the Fault History where all announced faults are stored, including when faults are cleared.



NOTE: Any current faults will show an "occurred" entry but will not have a "cleared" entry in the log

6.1.6 View Call Priority

If multiple calls from different panels are being received it will be difficult to know which calls came in first.

Opening this page shows the order that the calls were received to ensure the oldest call is clearly identified.

6.1.7 Touch to Enable

If there are multiple Network Control Points on the system then only one can be active and make calls at any particular time.

Figure 6.4 — This panel is currently disabled - touch to enable

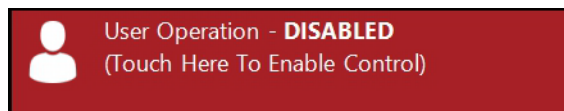


Figure 6.5 — This panel is currently Enabled and calls can be made



6.1.8 Export System Logs to File

It may be necessary to save the System Logs to a separate file to enable off site auditing or fault diagnosis.

The operator can choose to save either the Call Log or Fault Log.

6.1.9 Print System Logs

If required (and if a suitable printer is available) the System logs can be printed.

The operator can choose to print either the Call Log or Fault Log.

6.1.10 Make All Call Broadcast

Press this button to make a live announcement to all Fire Telephones & occupied Disabled Refuge remote units.

6.2 TO ANSWER INCOMING CALLS

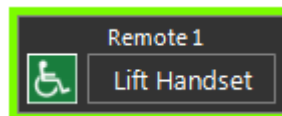
An incoming call will be announced by the monitor ringing and the relevant console indicator flashing "Incoming Call".

Figure 6.6 — Console Indicator showing Incoming Call



- Lift the handset,
- Tap on the relevant console and the console view will be displayed, if there is only one incoming call then it will automatically be answered.
- If there are multiple incoming calls all calling Remote Units will flash with a green background:

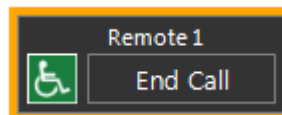
Figure 6.7 — Typical Remote Unit showing "Incoming Call"



6.2.1 To Answer an Incoming DRS Call

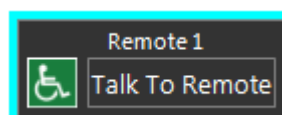
- Tap on the "Lift Handset" of the required Remote Unit.
- The operator can now speak to the caller.
- The Remote Unit will now show that a conversation is in progress (has orange background):

Figure 6.8 — Disabled Refuge Remote Unit showing "In Conversation"



- To end a Disabled Refuge call (and leave the Remote unit occupied) either hang up the handset or tap the "End Call" button in the icon.

Figure 6.9 — Disabled Refuge Remote Unit showing "Occupied"



- To speak to the caller again, press "Talk to Remote".
- The relevant console indicator will also indicate that there is at least one occupied remote:

Figure 6.10 — Console Indicator showing an Occupied Remote



6.2.2 To Answer an Incoming Fire Telephone / Stewards Telephone Call

- The process is the same as for an incoming DRS call except to end the call either hang up the handset or tap the "End Call" button in the icon.
- The remote unit will not become occupied but will return to "Standby" with a grey background.

6.2.3 To answer a call from a DTA (Disabled Toilet Alarm)

- The process is the same for an incoming DTA (Disabled Toilet Alarm) call, except there is no speech and an alarm tone will be heard in the handset.
- Answering a DTA Call automatically provides an "Acknowledge" signal to the relevant DTA to indicate that the call has been acknowledged and help is on the way. The local DTA unit will change from a continuous alarm to an intermittent tone.
- The DTA alarm will automatically re-announce if the local reset switch on the DTA is not pressed within a reasonable time.

6.2.4 To Clear "Occupied" Disabled Refuge units

It may be possible to clear the Occupied indication by pressing and holding the relevant Disable Refuge Remote icon for 4 seconds (this functionality is dependant on the local control point configuration).

If the Remote Units cannot be cleared from the control panel then the relevant Remote Unit must be visited and cleared locally.

7 Fault Finding

7.1 INTRODUCTION

Any faults that are detected will be announced on the Touchscreen and on the relevant Local Control Point.

7.2 LOCAL CONTROL POINT ISSUES

Please refer to the Omnicare Installation Manual for details on fault finding the Local Control Point(s).

This fault finding includes problems with remote units, local loop problems and battery charger issues.

7.3 NETWORK CONTROL POINT ISSUES

Please refer to the BVRDNET Installation Manual for details on fault finding network related issues.

8 Maintenance

8.1 MAINTENANCE & ROUTINE TESTING

The OmniCarePLUS EVC system has been designed to meet the requirements of BS5839-9:2011, however the standard also provides recommendations for maintenance and routine testing of the system that should be performed by the user.

Please refer to the Omnicare Installation Manual for full details on the maintenance & routine testing required.

9 Cables

9.1 CABLE REQUIREMENTS

Please refer to the Omnicare Installation Manual for full details on the cable requirements for Local Control points.

Please refer to the Cable Types document for additional cable types and recommendations.

A Addendum

This Addendum contains the mechanical and dimension information for the OmniCarePLUS Multi-Exchange EVC Control Panels and Battery Boxes.

A.1 BVOCTSNN (08-64 WAY) CONTROL PANEL

Figure A.1 — Typical Local Control Panel (8-64 Way)

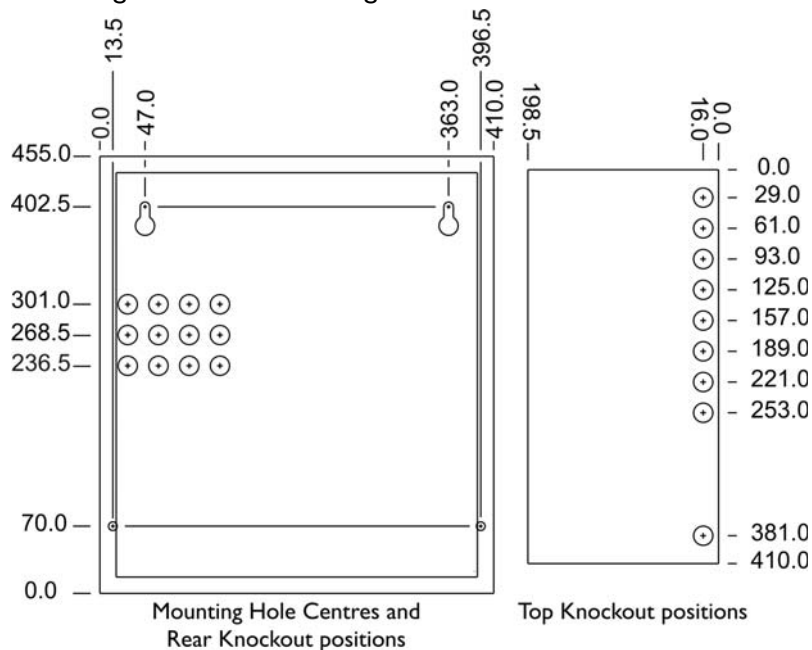


Dimensions (W x H x D)	410mm x 455mm x 200mm
Bezel Dimensions (W x H x D)	461mm x 506mm x 25mm
Bezel Cutout Dimensions (W x H)	420mm x 465mm
Weight (max)	15Kg



NOTE: The bezel can be fitted at any depth to suit the installation.

Figure A.2 — Mounting Holes & Knockout Positions



A.2 BVOBATT BATTERY ENCLOSURE

Figure A.3 — Typical BVOBATT Battery Enclosure

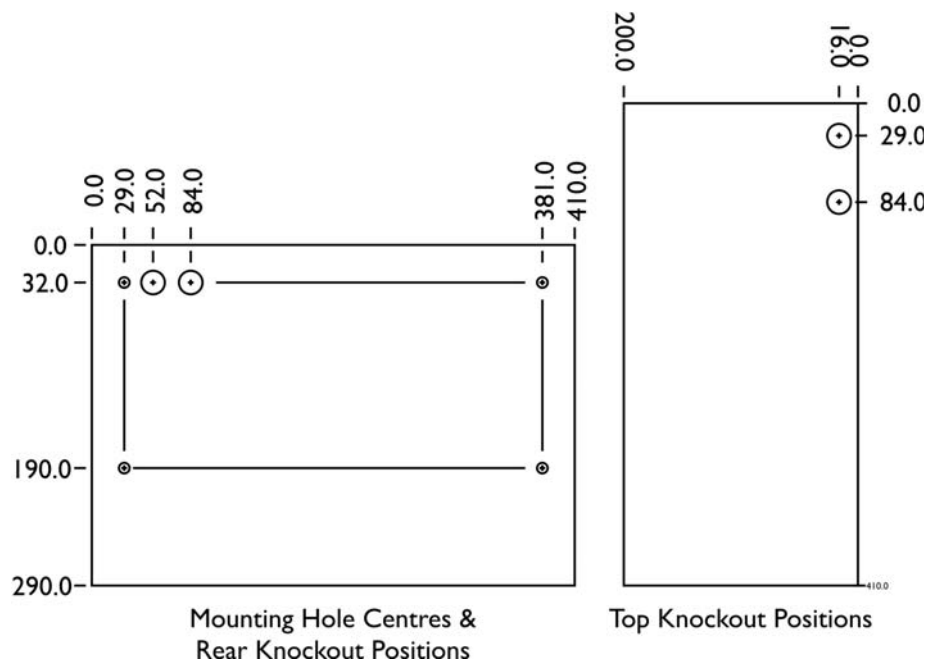


Dimensions (W x H x D)	410mm x 290mm x 200mm
Bezel Dimensions (W x H x D)	461mm x 340mm x 25mm
Bezel Cutout Dimensions (W x H)	420mm x 300mm
Max Weight (including batteries)	34Kg



NOTE: The bezel can be fitted at any depth to suit the installation.

Figure A.4 — Mounting Holes & Knockout Positions



A.3 BVOBATT2 BATTERY ENCLOSURE

Figure A.5 — Typical BVOBATT2 Battery Enclosure



Dimensions (W x H x D)	410mm x 600mm x 200mm
Max Weight (including batteries)	13Kg (Case) + upto 67Kg depending on batteries in use

Figure A.6 — Mounting Holes & Knockout Positions

