

**LAS8009 si Drop Seal**

Heavy Duty



A heavy duty automatic drop seal which is spring-loaded to lift clear of the floor as soon as the door is opened by a few millimetres. Plastic end caps are supplied.

■ **Key benefits**

- It requires no power connection.
- It is face-fixed and its aluminium cover plate conceals fixing screws and presents an exceptionally smooth external aspect.
- Tested for acoustic performance with BS EN ISO 10140-2: 2010.
- Meets the smoke leakage performance requirements of BS 9999 when tested in accordance with BS 476 Pt 31.1: 1983.
- Suitable for use on timber fire doors for up to 60 minutes under conditions of BS 476: Pt.20/22: 1987 and BS EN 1634-1: 2014.
- Tested for reliability, the seal completed 1,000,000 cycles without failure.

■ **Location**

- Single swing doors.
- For use on both right and left handed doors.

■ **Use with**

- Any perimeter seal.

■ **Min/max gap size**

- 1mm/15mm.

■ **Seal material**

- Black or grey silicone rubber.

■ **Standard lengths**

- 335mm, 435mm, 535mm, 635mm, 735mm, 835mm, 935mm
- 1035mm, 1135mm and 1235mm.
- Each length can be cut to the next size down.
- The 335mm can be cut back to 275mm.

■ **Fixing**

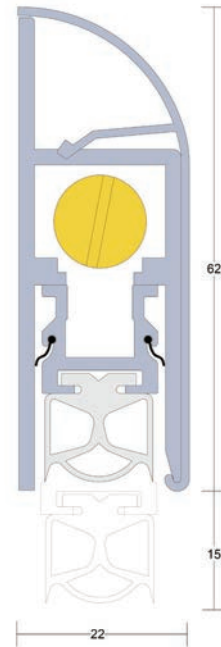
- Fixing screws are supplied, holes should be drilled at time of fixing.

■ **Adjustment**

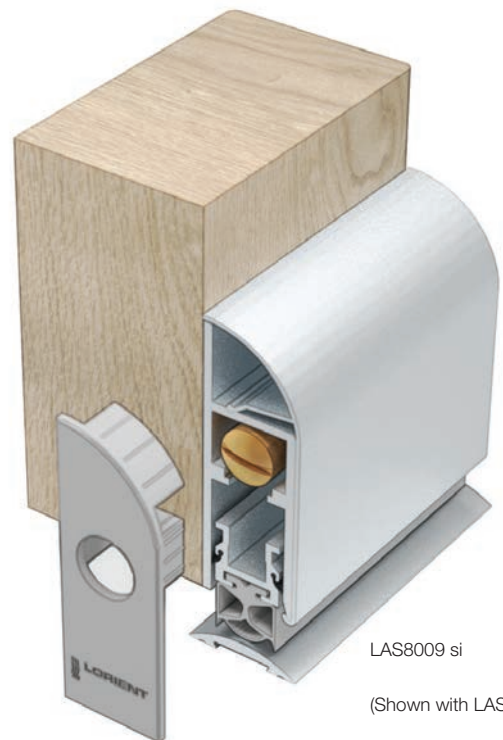
- Self-levelling on uneven surfaces – can be adjusted independently of the fixing screws.

■ **Finishes**

- Silver anodised aluminium cover plate, grey silicone rubber gasket, grey end caps.
- Bronze anodised aluminium cover plate, black silicone rubber gasket, black end caps.
- Special colours can be supplied using a powder coated finish for additional aesthetics.



LAS8009 si



LAS8009 si

(Shown with LAS4001)