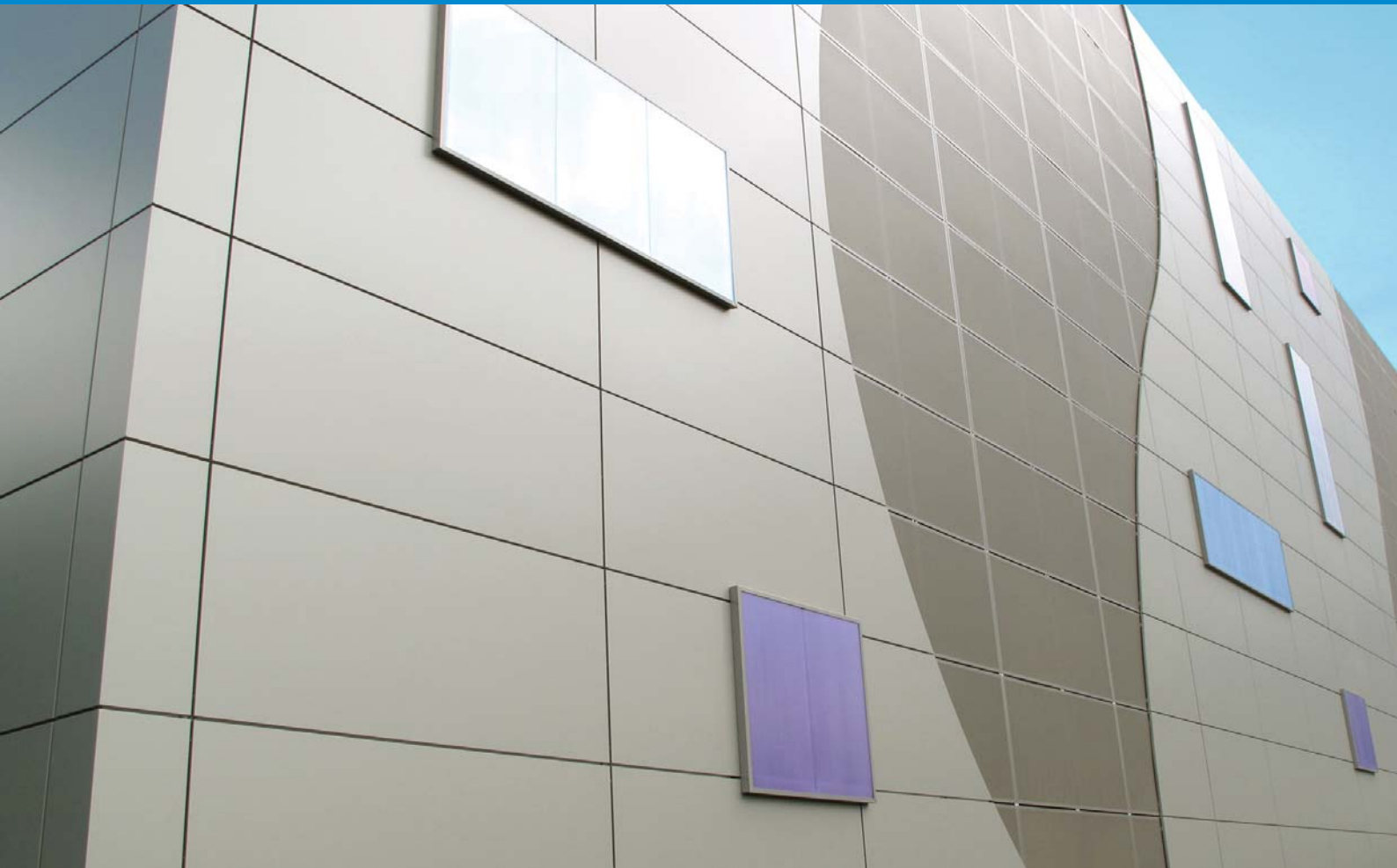


ASHSCREEN™

Solid, perforated and expanded screen for car parks and enclosures



National Rail Networks Car Park, Luton

Architecturally Flexible Design Solutions

Introduction



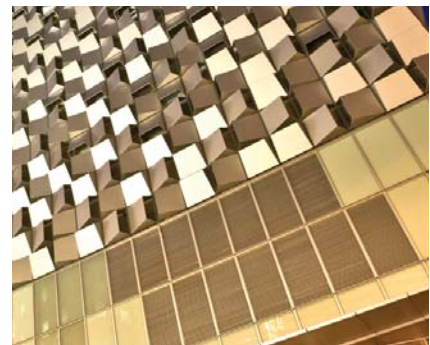
Ashscreen provides a fully engineered solution for enclosing open spaces such as car parks and stair towers. Available in a variety of materials, patterns and finishes, Ashscreen is the perfect solution.

Car parks and other open areas can be enhanced by the addition of a lightweight screen, improving the aesthetics of a structure, as well as providing permanent and impenetrable barriers. Panels may be straight or curved, to suit any architectural requirement.

Various panel types and finishes may be integrated in the same elevation, to create interesting features.

Features and benefits

- Aesthetic options to suit all conditions
- Engineered to suit the application and supporting structure
- Variety of types - plain (solid), perforated and expanded, in a wide range of options
- Material options including steel, aluminium and Cor-ten Steel
- Flexibility - system can be tailored to suit specific requirements
- Comprehensive design and technical support
- Ash & Lacy Drawing Office services
- Integration of other products and systems, such as louvres



design limited only by imagination

Design



Ash & Lacy's in house design and drawing office provide a full service to the customer or specifier, and can work with the design team to develop the most economic panel arrangement within the specification design brief.

Ash & Lacy can provide the full service from an initial design brief and schematic arrangements.

The Ash & Lacy name has been associated with the metal industry since the mid 1800's. Ash & Lacy Building Systems was formed in 1989, having previously been involved with profiled metal cladding as Ash & Lacy Steel Products.

Our fabrication facilities provide the customer with the confidence to specify the Ashtech range of rainscreen systems. These are manufactured by a dedicated team using modern equipment at our West Bromwich facility. Folded and curved, including two-directional curves, can be supplied, in a range of materials and finishes. Ash & Lacy have invested in equipment and software to ensure the best possible product is supplied.

Technical support not only involves the development of schemes, but extends to training and CPD's to enhance Ash & Lacy's reputation as a true building envelope supplier.

Careful selection of our supply chain partners, ensure that only top quality materials are used for all Ash & Lacy products. All materials are fully traceable through the supplier to the source.

Ash & Lacy's Technical Team

As an ISO9000 accredited business, quality is a major consideration at Ash & Lacy.

All products are designed to fulfil specific applications and are engineered to precise standards and tolerances.

Ashtech rainscreen cladding panels are supplied fully formed, generally with a protective film to the external face, which should only be removed once the panels have been fixed in place and preferably, at the end of each day's installation.

Ashure and Auditing Workmanship & Materials

All Ash & Lacy products carry a warranty, either for the products supplied directly, or from the supply chain partners.



The Ash & Lacy **ASHURE WARRANTY SCHEME** gives total confidence in the materials and products supplied. All products are covered by the Warranty and the Approved Contractor Network provides surety that everything is correctly installed. All Approved Contractors undergo training by Ash & Lacy in the handling, use and installation of their products.

Ash & Lacy Building Systems are now offering an audited warranty for their Ashtech projects, at no cost to the customer.



In partnership with AWM – Alliance Warranty Management – Ash & Lacy can now provide the **PROTECTOR WARRANTY**, which ensures quality control of the workmanship and materials throughout the cladding installation. This not only gives the client and the building owner peace of mind, it guarantees that there are no hidden problems which could manifest themselves later.

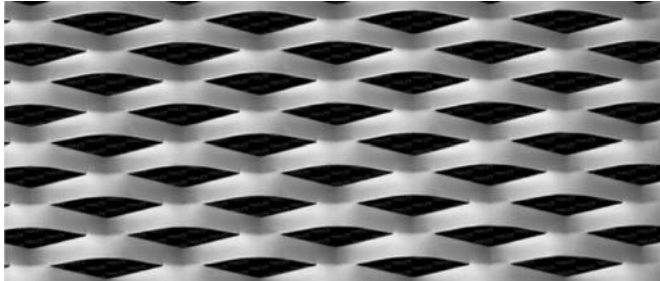
Should the client or building owner require additional cover against latent defects, then the **AWM PIONEER WARRANTY** is available, at additional cost. This is a full insurance backed warranty, which provides exclusive 10 year insurance against latent defects. In addition, a long term assurance in excess of the **PIONEER WARRANTY** provides an additional 15 years warranty, making the total assured period 25 years.

Full details of the AWM Warranties are available from Ash & Lacy Building Systems Ltd.

Ash & Lacy Building Systems strive to provide the best possible product to the client, and the AWM Warranty scheme is further proof of the commitment to their quality and integrity.

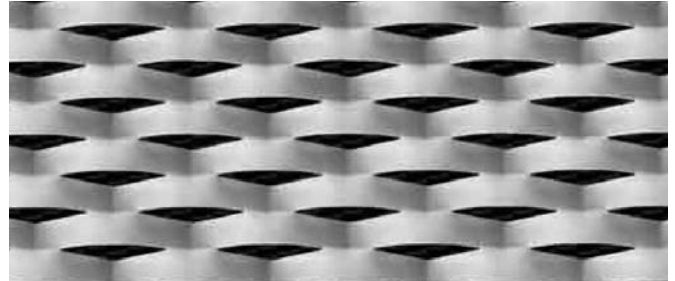
Expanded mesh

115/40



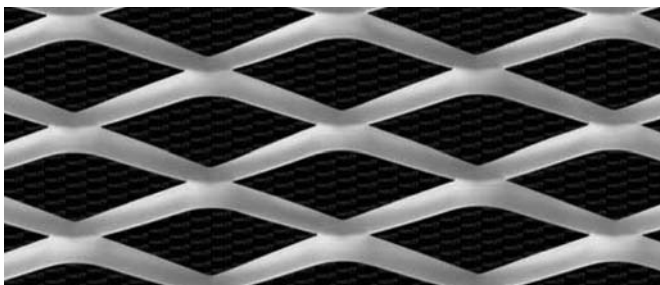
Mesh	115mm x 40mm
Material	Aluminium / Pre Galvanised Mild Steel
Thickness	1.5mm / 2mm / 3mm
Max Sizes	1000 – 1500 x 3000mm 2000 – 2500 x 1800mm
Visual Open Area	26%
Air flow Open Area	60%

110/40



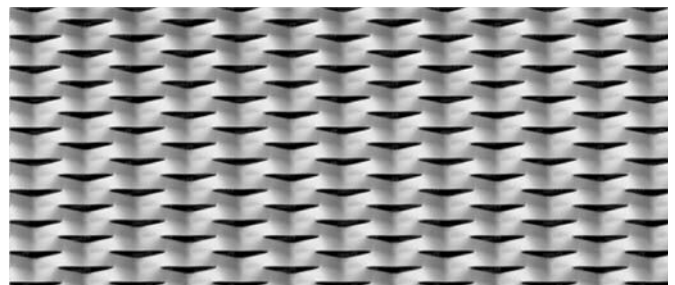
Mesh	110mm x 40mm
Material	Aluminium / Pre Galvanised Mild Steel
Thickness	1.5mm / 2mm / 3mm
Max Sizes	1000 – 1500 x 3000mm 2000 – 2500 x 1600mm
Visual Open Area	16%
Air flow Open Area	56%

200/75



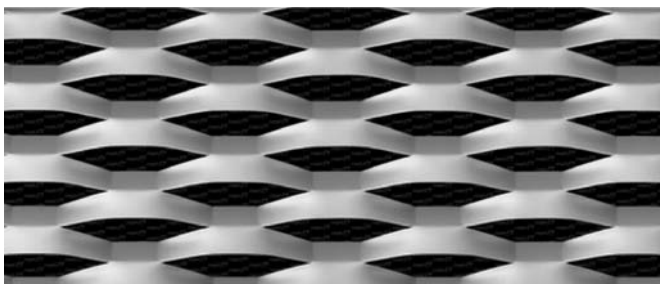
Mesh	200mm x 75mm
Material	Aluminium / Pre Galvanised Mild Steel
Thickness	1.5mm / 2mm / 3mm
Max Sizes	1000 – 1500 x 3000mm 2000 – 2500 x 2500mm
Visual Open Area	52.3%
Air flow Open Area	79%

76/31



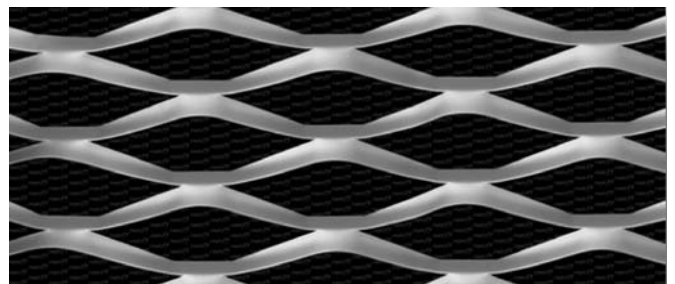
Mesh	76mm x 31mm
Material	Aluminium / Pre Galvanised Mild Steel
Thickness	1.5mm / 2mm
Max Sizes	1000 – 1500 x 3000mm 2000 – 2500 x 1600mm
Air flow Open Area	13.3%

150/56



Mesh	150mm x 56mm
Material	Aluminium / Pre Galvanised Mild Steel
Thickness	1.5mm / 2mm
Max Sizes	1000 – 1500 x 3000mm 2000 – 2500 x 1600mm
Visual Open Area	29.8%
Air flow Open Area	71%

200/65



Mesh	200mm x 65mm
Material	Aluminium / Pre Galvanised Mild Steel
Thickness	1.5mm / 2mm / 3mm
Max Sizes	1000 – 1500 x 3000mm 2000 – 2500 x 2500mm
Visual Open Area	56%
Air flow Open Area	78%

Most popular patterns shown. Many other patterns are available, please contact our Technical Department for details.



**Bedfordshire University,
Luton**

Product Ashtech Ashscreen

Installer Wood Newton Ltd

Sector Education



**Eastside Car Park,
Birmingham**

Product Ashtech Ashscreen

Designer Urban Design

Product Thomas Vale
Manager Construction Ltd

Contractor Berry Systems

Sector Transport



Loughborough SportPark

Product Ashtech Ashscreen
Architect David Morley Architects
Developer Baggaley Construction Ltd
Installer William Cooper Ltd
Sector Commercial

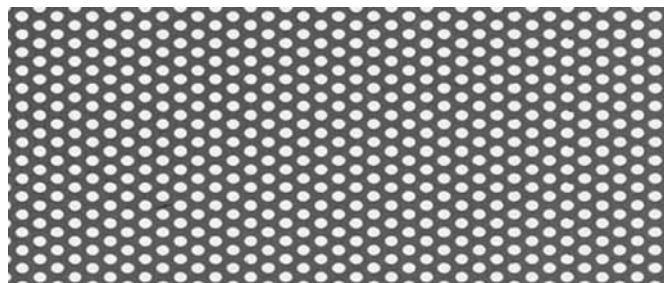


**National Rail Networks
Car Park, Luton**

Product Ashtech Ashscreen
Installer Gable (UK) Ltd
Sector Transport

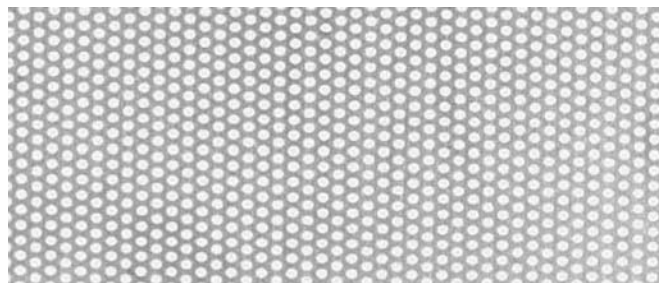
Perforated panels

1.5/3/23



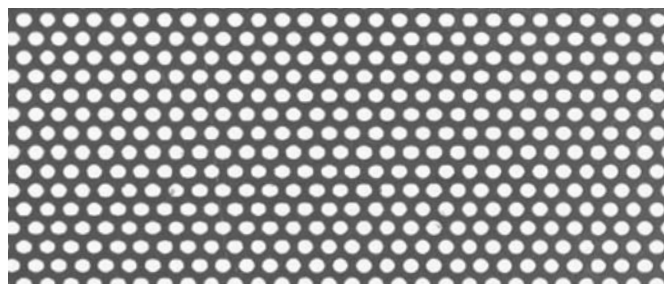
Holes	R1.5 T3
Material	Aluminium, Stainless Steel & Mild Steel
Thickness	1mm
Open Area	23%

2.0/3/40



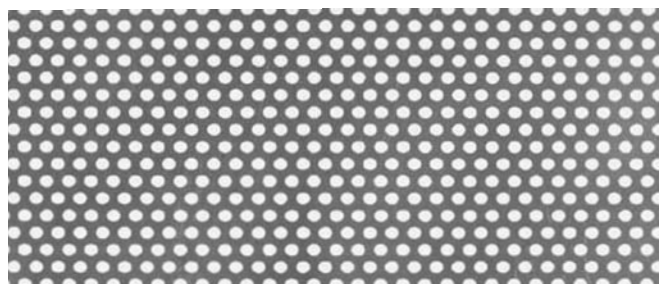
Holes	R2 T3
Material	Aluminium, Stainless Steel & Mild Steel
Thickness	1-2mm
Open Area	40%

2.5/4/32.5



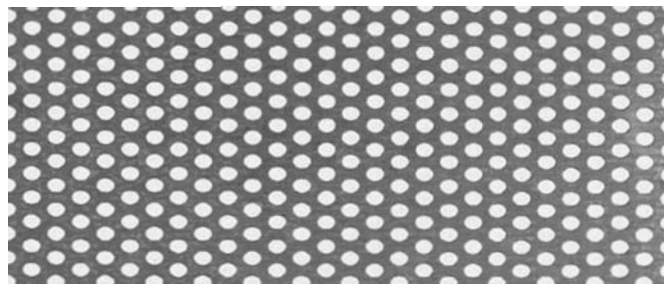
Holes	R2.5 T4
Material	Aluminium, Stainless Steel & Mild Steel
Thickness	1-2mm
Open Area	32.5%

3.0/5/33



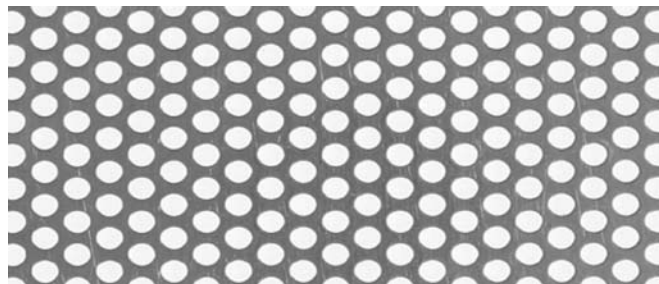
Holes	R3 T5
Material	Aluminium, Stainless Steel & Mild Steel
Thickness	1-3mm
Open Area	33%

3.5/6/31



Holes	R3 T5
Material	Aluminium, Stainless Steel & Mild Steel
Thickness	1-3mm
Open Area	33%

4.0/6/40

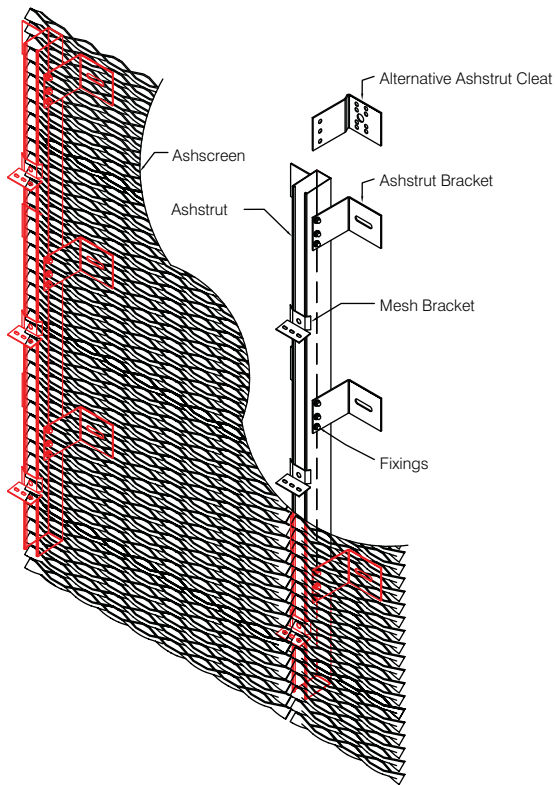


Holes	R4 T6
Material	Aluminium, Stainless Steel & Mild Steel
Thickness	1-3mm
Open Area	40%

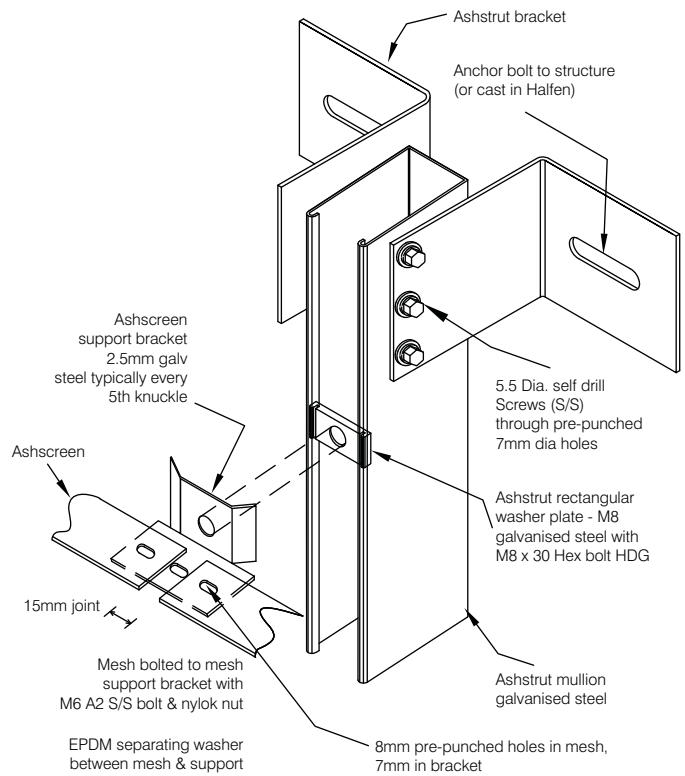
Most popular patterns shown. Many other patterns are available, please contact our Technical Department for details.

Technical details

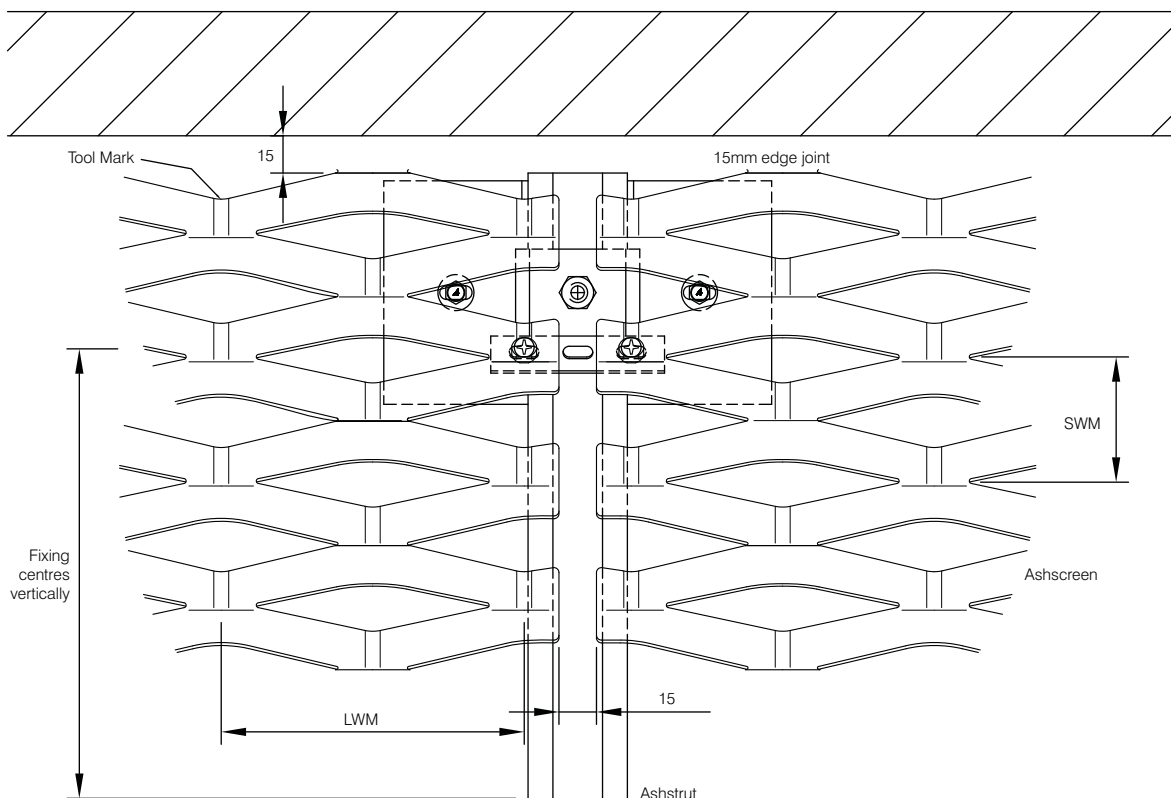
Ashscreen Expanded Isometric



Ashscreen Isometric Assembly



Head Joint Detail



Notes: 1. All dimensions are in millimeters unless otherwise stated. 2. All dimensions are not to be scaled from this drawing. 3. Copyright of this drawing is vested in Ash & Lacy Building Systems Ltd.

Technical details

Joint Detail On Plan

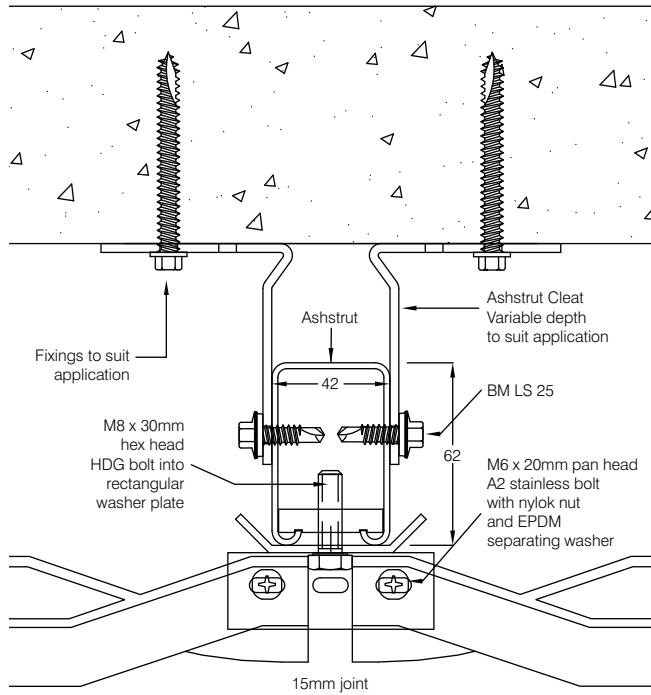
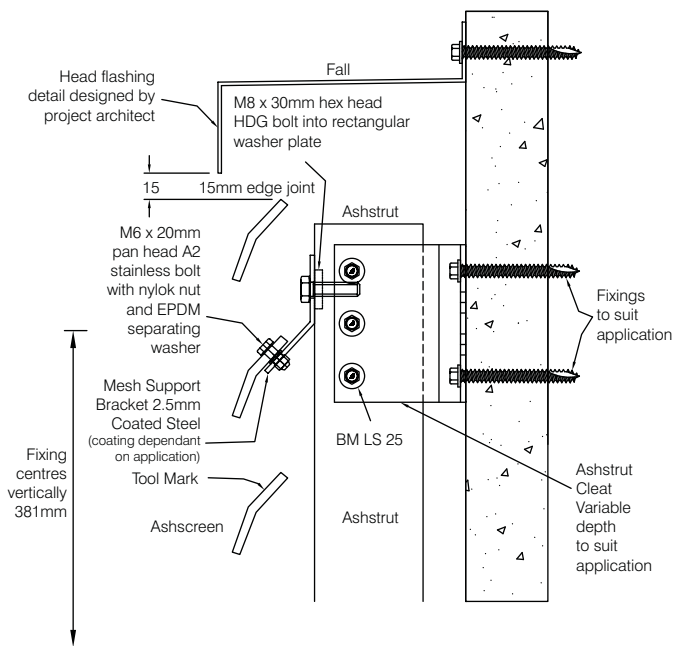
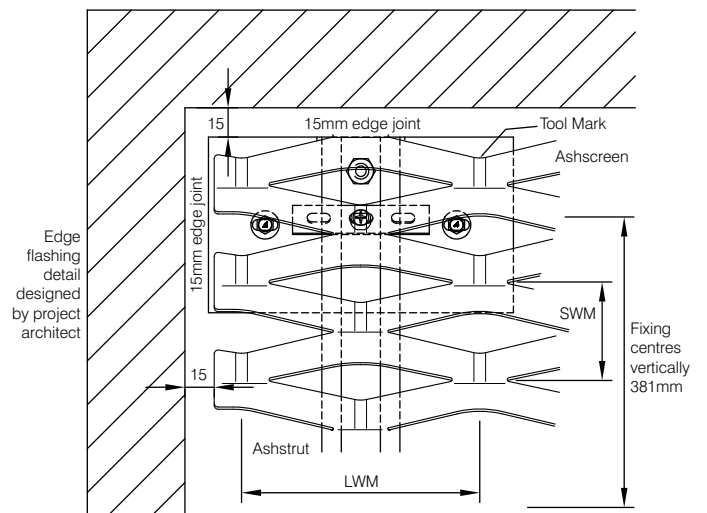


Image copyright of Daniel Clements

Head Detail Section



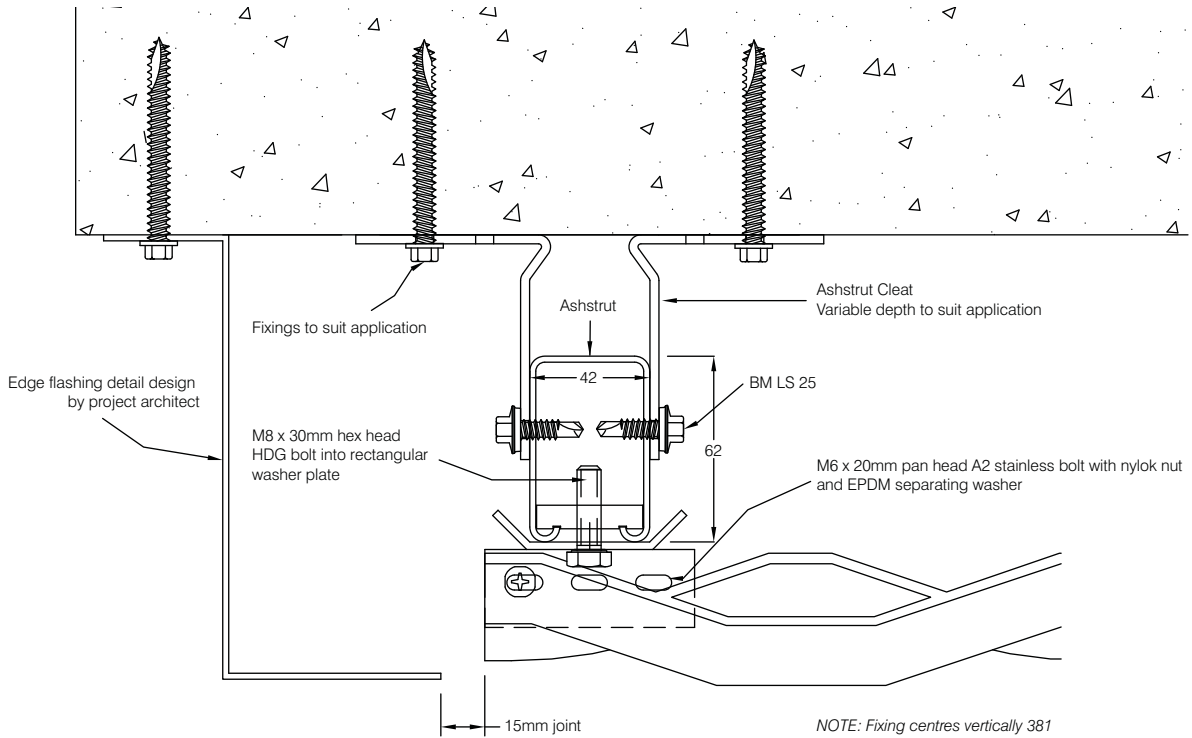
Head Corner Detail



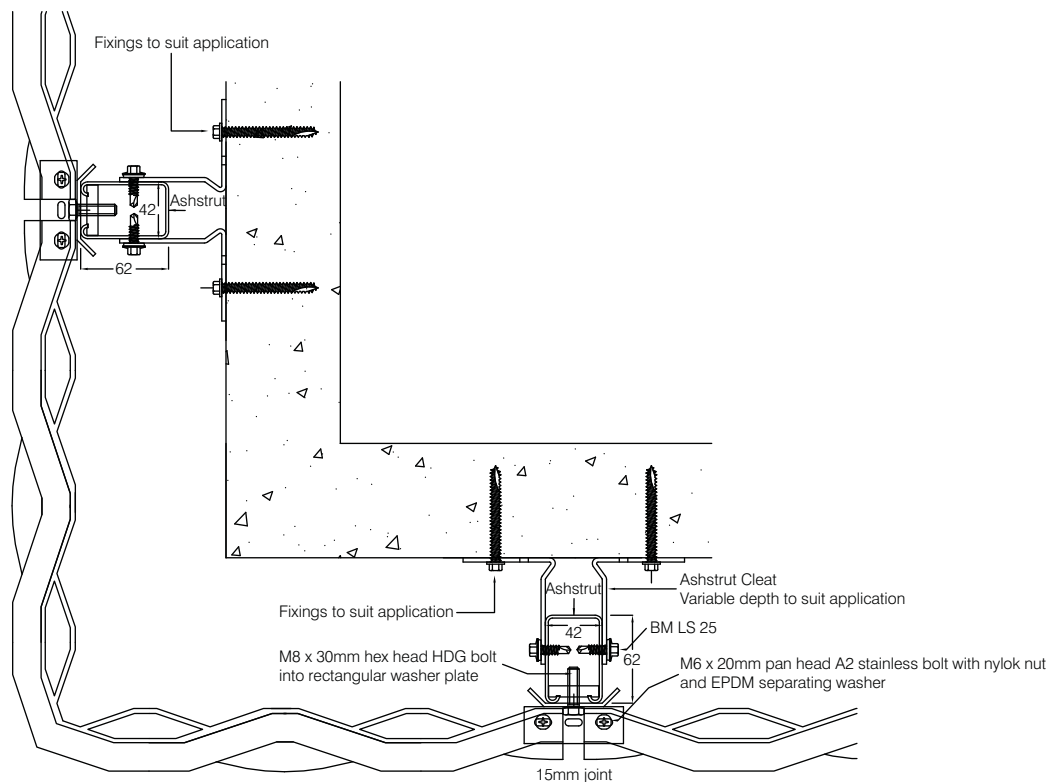
Notes: 1. All dimensions are in millimeters unless otherwise stated. 2. All dimensions are not to be scaled from this drawing. 3. Copyright of this drawing is vested in Ash & Lacy Building Systems Ltd.

Technical details

End Detail with Flashing V



Corner Detail Section



Notes: 1. All dimensions are in millimeters unless otherwise stated. 2. All dimensions are not to be scaled from this drawing. 3. Copyright of this drawing is vested in Ash & Lacy Building Systems Ltd.



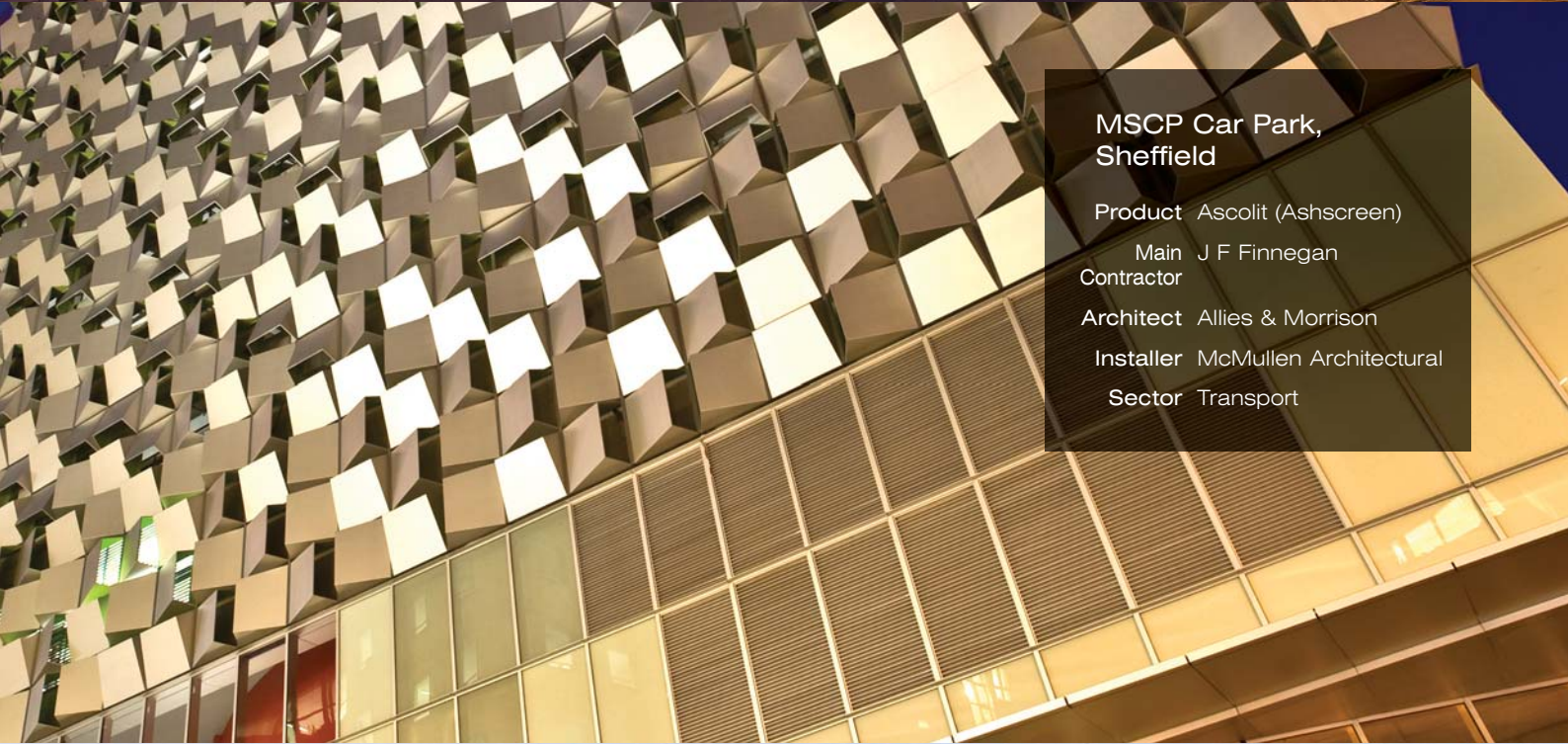
**Metropolitan Works,
London Metropolitan
University**

Product Ashtech Rainscreen
Cladding System

Architect Cartwright Pickard
Architects

Sector Educational

Image copyright of Daniel Clements



**MSCP Car Park,
Sheffield**

Product Ascolit (Ashscreen)

Main Contractor J F Finnegan

Architect Allies & Morrison

Installer McMullen Architectural

Sector Transport



**Cambridge Science
Park**

Product Ashtech Ashscreen
(In collaboration with
Ash & Lacy Perforators)

Main Contractor SDC

Installer Bourne Steel

Sector Education

ASHTECH™ Rainscreen Cladding Systems

Rainscreen cladding is a unique method of cladding or overcladding a building to provide weather protection for the building fabric and structure.

The Ashtech rainscreen cladding system creates a completely flat surface giving the specifier the opportunity to develop an aesthetically pleasing façade, whilst providing long term performance which is guaranteed. A multi-layered rainscreen cladding system will out perform alternative types of construction, at an economic whole life cost to the building owners.

Ashtech rainscreen cladding systems provide a low maintenance, sustainable external ventilated 'cold' façade using aluminium sheet, aluminium composite material (ACM), and other metals such as steel and copper, which are formed into cassettes available in a variety of horizontal and vertical joint arrangements, including 3-D geometric designs.

ASHZIP™ Standing Seam Roofing Systems

The AshZip™ standing seam roofing system was developed to enhance our total roofing envelope package solution. By incorporating other high performance Ash & Lacy building envelope products into the roofing system, compatibility is ensured between the individual components.

Manufactured on the latest state-of-the-art production equipment and available in a variety of materials and finishes AshZip™ has proved to be an unbeatable choice amongst both specifiers and contractors.

ASHJACK™ Over-Roof Conversion Systems

The AshJack™ over-roofing conversion system has been punching above its lightweight properties for two decades. Progressive system innovation has ensured that it remains undefeated, providing a new and enhanced lease of life for the widest possible range of failed flat roofs.

A permanent, quickly installed and weathertight solution to flat roof failure, systems are individually designed and tailored to suit structural requirements, accepting the widest variety of roof finishes, from metal cladding, to real/simulated tiles and slates.

ASHFAB™ Fabrications and Flashings

The AshFab™ range of specialist fabrications offers an extensive range of bespoke products from architectural features and bullnoses to louvres, flashings and rainwater management systems to complement the main building design.

Produced by skilled fabricators and supported by a specialist design team standard and bespoke elements in coated steels, aluminium and ACM are available nationwide from three strategically positioned production facilities to ensure the fastest possible turnaround times.

ASHGRID™ Spacer Support Systems

AshGrid™ is the market leading spacer system, incorporating the 'Safe-Loc' feature, which ensures continuity of the bar throughout the construction.

The system has been developed to take account of the requirements of Building Regulations, and has led to the introduction of the new 'Vee' bracket, for deeper cavities. The AshGrid™ AG40 bar is manufactured from high yield steel, with a ribbed top flange for maximum fixing efficiency.

ASHFIX™ Fasteners and Accessories

Offering unrivalled product quality and performance, the extensive AshFix™ range of stainless steel, carbon steel, colour headed and low profile options provide the ultimate fixing solution for light and heavy section built-up and composite panel applications.

Fastener lengths accommodate all current construction elements and drill points are designed to accommodate UK steel thickness to optimise hole diameter to thread engagement thus ensuring maximum performance and holding power. Designed in partnership with an ISO 9001:2000 approved manufacturer, all fasteners and fixings undergo testing procedures at a state-of-the-art testing facility at the West Bromwich headquarters.

West Bromwich

Bromford Lane, West Bromwich,
West Midlands B70 7JJ
Tel: **0121 525 1444** Fax: **0121 525 3444**

also at: London

Gateway 3, Davis Road, Off Cox Lane,
Chessington, Surrey KT9 1TD
Tel: **020 8391 9700** Fax: **020 8391 9701**

Glasgow

Unit 4a, Albion Trading Est, South Street,
Whiteinch, Glasgow G14 0SY
Tel: **0141 950 6040** Fax: **0141 950 6080**

E-mail enquiries to:

sales@ashandlacy.com

