

BX48 Wall Cladding System



- **faster** horizontal cladding fix
- engineered to be **stronger**
- engineered to be **quicker** and **easier** to fit
- engineered to be **cost effective**

www.ashandlacy.com


ASH•LACY

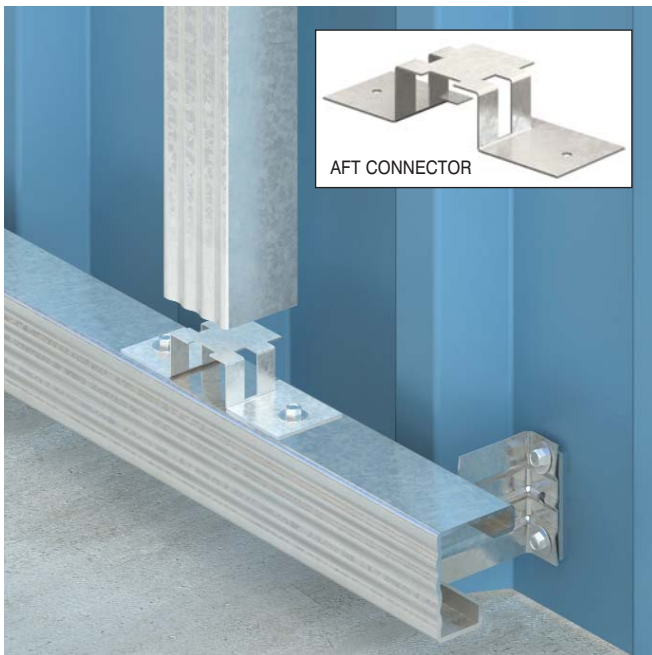
flexible



Ashwall BX48 – Design Information

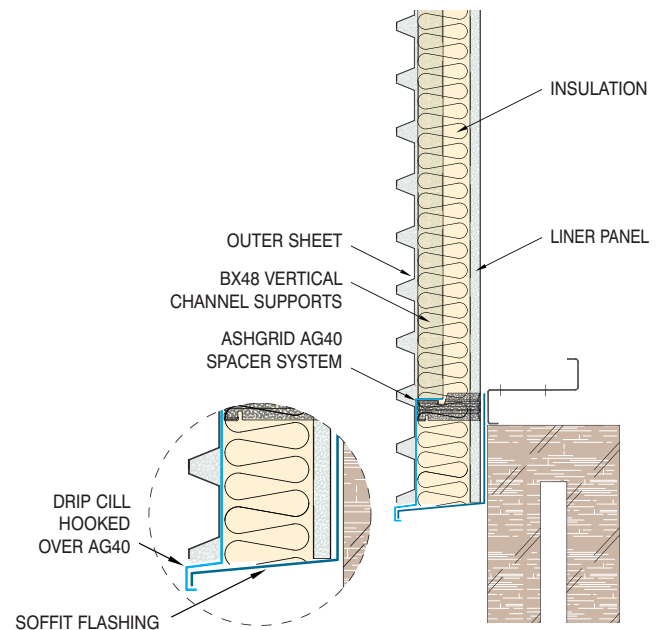
In order to fully utilise the flexibility of the BX48 system, Ash & Lacy have created recommended details for the design and construction of various solutions required on site that are often overlooked.

The below are examples of potential designs for the installation of drip flashings, the construction of firewalls for Ashwall BX48 for metallic silver cladding and also connection details to provide a robust solution for horizontal cladding.



Setting Out

- Ashgrid is used to create the all important level base for the Ashwall bars
- AFT Connectors used to secure Ashwall bars to the horizontal Ashgrid
- The weight of the Ashwall bars is retained at the bracket locations



Drip Flashings

Ash & Lacy have developed this recommended detail incorporating the new BX48 bracket for a robust drip and soffit detail, utilising the horizontal Ashgrid as a secure base.

Robust Solutions with BX48

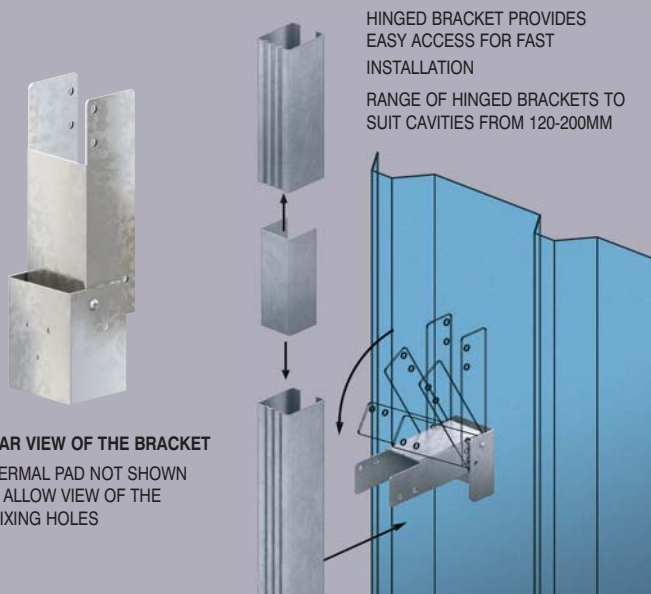
fast & accurate

Vertical spacer bars for horizontal cladding have to span between the main rails which generally range between 1.3 & 2.2m vertical centres.

Built-up cladding systems commonly have 140mm cavities but can range up to 200mm and with varying quilts, therefore the applied wind loadings as well as the weight & eccentricity of dead loadings can have a significant rotational effect on the main sheeting rails.

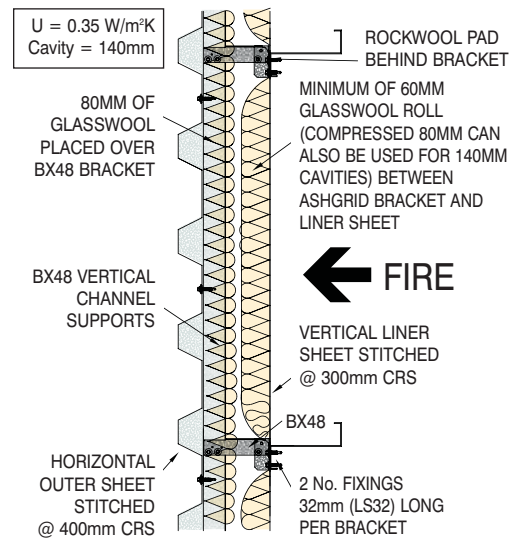
The Ashwall design has controlled the fixing locations in such a way that the deadloadings are effectively reduced back to the rail face to ensure minimal rotational effect. (The movement is developed and then absorbed in the Ashrail bracket connection).

- Unique and true integrated system
- Fully engineered system
- Works in combination with and approved by major side rail manufacturers
- Ribbed, efficient box bar section to span up to 2.2m
- Easy labour saving spigot to extend bar lengths (no screws necessary)
- Unique pivot bracket for ease of fixing
- Brackets are hinged and available to suit cavities from 120-200mm
- Provides quicker installation – reduced amount of components
- Labour saving single man fix possible
- Cost effective



Firewall construction details with Ashwall BX48

PART L FIREWALL - 15 MINS INSULATION INTEGRITY



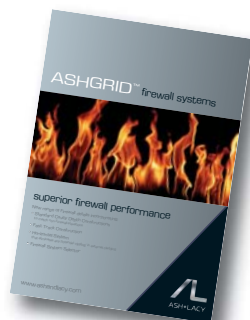
FACTORY APPLIED ROCKWOOL THERMAL PAD FOR FIREWALL APPLICATIONS

- Eliminates requirement to pass insulation over the bars this removes potential for 'rippling' in external cladding
- Fully compliant with all required U-values
- Exceeds fire regulations of Parts L & B
- Firewall bracket has a factory applied Rockwool Pad

NOTES:

Rails require slots to cater for expansion under fire load. The designer should liaise with the structural engineer on this matter. Bracket centres can not exceed the width of an insulation strip. Please note that due to the use of the Rockwool pad and Fibreglass insulation, consideration may be required due to the possible increase in construction depth. Please consult our technical team for further information if required

For more information on Ash & Lacy's range of firewall systems please see our Firewall datasheet



Call **0121 525 1444** to discover more or E-mail sales@ashandlacy.com

Fabrications and Flashings
Fasteners and Accessories
Over-Roof Conversion Systems
Rainscreen Cladding Systems
Standing Seam Roofing Systems
Spacer Support Systems

West Bromwich. Bromford Lane, West Bromwich, West Midlands B70 7JJ

Tel: 0121 525 1444 Fax: 0121 525 3444

also at: London. Gateway 3, Davis Road, Off Cox Lane, Chessington, Surrey KT9 1TD

Tel: 020 8391 9700 Fax: 020 8391 9701

Glasgow Unit 4b, Albion Trading Est, South Street, Whiteinch, Glasgow G14 0SY

Tel: 0141 950 6040 Fax: 0141 950 6080

E-mail enquiries to: sales@ashandlacy.com

Ash & Lacy reserve the right to amend product specifications without prior notice.
The information, technical details and fixings advice are given in good faith but are intended
as a guide only. For further information please contact Ash & Lacy Building Systems.
All products are supplied in accordance with the Ash & Lacy Terms & Conditions of Sale.

www.ashandlacy.com

