

Uniclass L5:P4		EPIC E:X4
CI/SfB	(4)	XH

April 2011

ASHFAB™



architectural fabrication
and flashing solutions

PLATINUM
SYSTEM WARRANTY



METAL GUTTER
MANUFACTURERS
ASSOCIATION



The Building Services Authority

www.ashandlacy.com



ASH•LACY

Introduction & Contents



Materials & Sizes	3
Flashings	5
Special & Architectural Fabrications	6
Fabrications Range	7
Rainwater Management	9
Coated Gutters	10
Ashfold Linings & Single Skin Gutters	11
Other Rainwater Systems	12
Perimeters, Ashgrid & Ashfix	13
AshFab Order Form	14

Ash & Lacy are committed to providing a fast, accurate service to it's customers

This policy is supported by a nationwide network of depots, each equipped with modern machinery to give the customer the best possible service. Specialist requirements produced to a client's specific requirements, are available at every depot, with the same quality and efficiency.

Correct detailing of joints on cladded buildings is essential in preventing leaks and in providing robust details, to meet the demands of the Building Regulations.

A building is not simply accommodation; it can be the face of the occupants that inhabit it, and clients now expect their buildings to project an appropriate corporate image throughout the design life of the building.

Alongside performance, aesthetic expectations are of paramount importance, with originality now often demanded. This presents Architects, Designers and Contractors with fresh challenges and problems, which must be met with innovative product solutions.

Clients like to stamp their style or vision within the building design, and each one presents different issues to be considered, when assessing the weatherproofing possibilities, whilst accommodating the design requirements.

Specially fabricated accessories are often the most dominant features of a building design. The need to operate only within the boundaries of a 'total quality' environment is essential when meeting the complex needs of this area of the market.

Ash & Lacy recognise these requirements and our ASHFAB Specialist Fabrication Division reflects our commitment, from initial concept to project completion. Our quality of sheet metal fabrication skills, technical competence, technology and experience, ensures that Ash & Lacy Building Systems are best placed to successfully supply the needs of this market.

Cutting edge bespoke perimeter detailing and rainwater systems

- Standard & Special Fabrications
- Architectural Fabrications
- 6m long flashings available*
- CNC turret punching facility
- MIG & TIG Welding
- Louvres, Panels, Planks
- Gutters
- Bespoke Products
- Wide range of curved flashings, including lock rolled, welded & eckolded
- Large range of stock, available in a variety of materials, colours and finishes including Tata HPS200 & Leathergrain, Kingspan XL200, Aluminium / PPC Aluminium, Prisma and PvdF
- Large stock of galvanised material in various thicknesses
- Design and technical support throughout the life of the project

*restricted materials





Comprehensive product range

Our extensive range of plant and machinery provides us with total flexibility for the manufacture of any flashing or fabrication. Making special components from our range of metals, gauges and finishes, by our competent and skilled operatives, will satisfy the most demanding challenge.

Quotation by return

The estimating teams will provide your quotations by return. Customer service and reaction to the requests is an important KPI within the business.

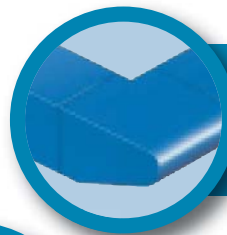
Next-day delivery

Next-day deliveries are possible and our network of depots provides total flexibility in satisfying customer demands.

Extensive stock

With a wide selection of materials, gauges and finishes, the permutations available for fabricated materials are endless. Materials committed to stock, aluminium, galvanised steel, prisma, PvdF, HPS200, leathergrain plastisol and white liner, with a selection of thicknesses from 0.7 to 3mm, facilitate immediate supply of all client requirements.

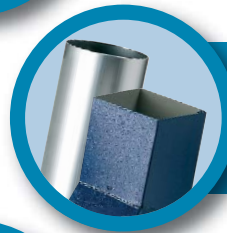
Ash & Lacy are market leaders for standard, bespoke and architectural flashings & fabrications, with a nationwide network of strategically located depots.



architectural
features



aperture units,
ventilators & louvers



rainwater
components



flashings



materials
& finishes

Materials & Sizes



Choice of the correct material is important to ensure that the flashings perform their required function for the design life of the building. Various coatings and colours are available, depending upon the client's requirements.

When specifying the materials for the flashings on a building, consideration must be given to the required appearance and the materials to which they are being connected.



Comprehensive product range

Latest technology and experience combined to provide a solution to any request.



Fast Service

Next day, or even same day service on standard products. Ash & Lacy's sales & technical team can advise on any requirement.



Extensive stock

Each depot holds a range of products for immediate reaction to customers' requests.



Rainwater Products

Simple, Insulated or Membrane gutters, with steel or aluminium downpipes available from every depot.

Common materials used for flashings are:

Colorcoat HPS200 Ultra® by Tata Steel

Colorcoat HPS200 Ultra® provides the ultimate in durability. The latest generation pre-finished steel offers an exciting colour range and delivers twice the colour and gloss retention and 37.5% longer life compared to a standard plastisol. Colorcoat HPS200 Ultra® has a 200 micron unique, eco-designed, durable and abrasion-resistant top coat system.

Steel substrate is 0.7mm thick.

Colorcoat Prisma® by Tata Steel

Designed to withstand the rigours of the external environment, versatile, lightweight and strong, Colorcoat Prisma® pre-finished steel is the ideal choice for long lasting colour. It is available in a contemporary colour range including 3 matt shades with an optically smooth finish.

Colorcoat® LG

Leathergrain plastisol product suitable for flashing applications where good performance is required at a competitive price. Available with a 25 year performance guarantee.

Steel substrate is 0.7mm thick.

Double-sided Plastisol

For additional protection for aggressive internal environments, Colorcoat HPS200 Ultra® and Colorcoat® LG are available as 200/200 micron or 200/100 micron.

Bright White Liner

Liner enamel finish to match the internal building liner sheets, on a 0.7mm Galvanised substrate.

Colorcoat, Colorcoat HPS200 Ultra and Prisma are registered trademarks of Tata Steel UK Limited

Foodsafe

Liner product for use in areas where food contamination is a consideration.

PvdF

A thin (25 micron) coating on Galvanised* Steel or Aluminium substrate.

PvdF offers good colour retention and is particularly suited for wall applications.

Steel substrate is 0.7mm thick.

Galvanised Steel*

Bright Spangled or Lead Free galvanising applied to a steel substrate, providing protection against premature rusting. All galvanised material is DX51 quality, with a G275 coating

Available in thicknesses of 0.7mm, 0.9mm, 1.2mm, 1.6mm, 2.0mm, 2.5mm & 3.0mm.

Aluminium

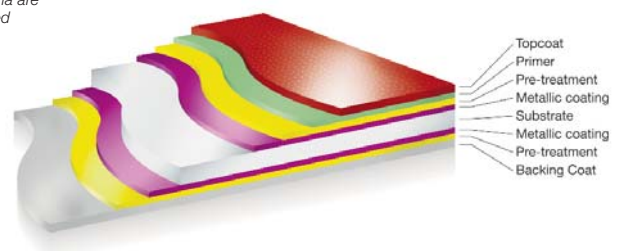
Plain mill or coated aluminium, in thicknesses of 0.9mm, 1.2mm, 1.6mm, 2.0mm & 3.0mm.

Pre-coated Aluminium

0.9mm, 1.6mm & 2.0mm pre-coated in a selected range of colours.

Other

Aluminium Composite Material (ACM) is also available, either coated or plain mill finish, where flatness is a consideration.



Auditing Workmanship & Materials Ltd

AWM Protector Warranty

Ash & Lacy Building Systems now offer the option of independent auditing by AWM – Auditing Workmanship & Materials Ltd – to give clients comfort that the correct materials and workmanship has been employed on a project, at no additional cost.



Materials held as standard stock items

0.7mm Coated Galvanised Steel Sheet

HPS200 Scintilla Plastisol	White Foodsafe
HP200 Leathergrain Plastisol	Pvdf
Bright White Liner	Double-sided Plastisol
	Prisma

Double sided material is available – restricted colours only

Plain Galvanised Steel Sheet

0.7mm, 0.9mm, 1.2mm, 1.6mm, 2.0mm, 3.0mm

Hot Rolled Mild Steel

2.0mm, 3.0mm

Mill Finish Aluminium Sheet

0.9mm, 1.2mm, 1.6mm, 2.0mm, 3.0mm

Stucco Embossed Aluminium Sheet

0.9mm, 1.2mm, 1.6mm

Colour Coated Aluminium Sheet

0.9mm	0.9mm	1.6mm	2.0mm
Merlin Grey	Moorland Green	Silver	Silver
Van Dyke Brown	Goosewing Grey	White	White
Mushroom	Silver	Black	Black
White		Goosewing Grey	Goosewing Grey
		Merlin Grey	Merlin Grey

Aluminium Pipe Diameters

63mm, 70mm, 75mm, 90mm, 100mm, 150mm

Aluminium Pipe Square Section

75mm, 100mm, 150mm

In addition to standard stock materials, many other materials, gauges and finishes such as stainless steel, perforated aluminium and mesh can usually be quickly obtained. The full RAL Range of colours is also available in polyester powder coat finish for galvanised steel and aluminium substrates.

If you don't see your requirements listed above then please call us. In most cases we can quickly source material so as not to delay your lead-time.

Manufacturing

Automated flashing line with ability to cut and fold sections up to 6.0m in length.

Guillotining: Up to 6.0m in length.

Brake press-sections up to 6.0m in length

MIG and TIG Welding

Plasma cutting facilities

Full CNC turret punch facilities

Smooth-curving facilities

Aluminium fabrication to architectural standard

Tolerances & Gauge

Metal products are supplied in thicknesses specified by the client and can be within certain tolerances, as set out by the relevant Codes of Practice - British Standard EuroNorms.

Ash & Lacy supply products as specified, and do not entertain material at the lower end of the tolerance band. For example, a material specified as 0.7mm thick could be 0.64mm thick, and still be 'within tolerance'. Specifiers must check that they are getting what they ordered, as thin material could compromise the structural performance of the product, leading to premature failure or leaks. Furthermore, at the lower end of the tolerance band for 0.7mm steel, there is nearly 10% less material than specified!

Flashings

Ash & Lacy Building Systems have invested in modern state of the art machinery, to enable production of flashings in a range of materials, to the highest standards and on short lead times.

Our experienced staff will advise on the most economic dimensioning of flashings, to minimise waste. This is a major feature in ensuring maximum material utilisation, and most economic pricing.

When ordering, or enquiring, it is essential that the following information is clearly shown:

- Dimensions (Note for thicker materials, critical overall dimensions are required)
- Bend angles
- Safety edges (fold-back to avoid sharp edges)
- Colour
- Side where colour is required
- Length (standard length is 3m, but up to 6m is available)
- Butt straps, joggle joints, etc

24HR
turnaround
on standard
flashings



All flashings, unless specified otherwise will be supplied in 0.7mm gauge materials in colours and finishes which can match or contrast with the cladding.

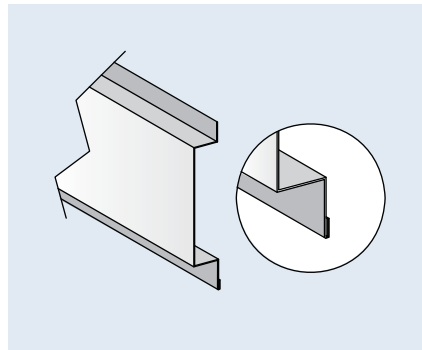
The standard length for flashings is 3m, but lengths up to 6m can be supplied, assisting the client to maintain a good line, and to minimise joints. Joints may be either lapped or butt jointed, with butt straps, if required. These are normally supplied at 150mm in length, but can be supplied in any width specified.

The following requirements should be noted when detailing joints and flashings:

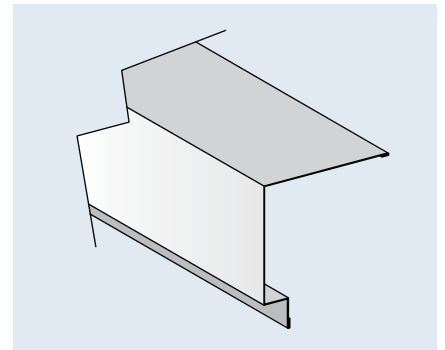
- Avoid unstiffened edges to flashings – either return a short edge or fold-back
- Position sealants as near to the cut edge as possible
- Avoid details which trap or dam water
- Lay flashings such that overlaps are away from the prevailing wind
- Apply a paint or lacquer to cut edges where there is a risk of water collecting on them, or where they are likely to be submerged
- Avoid large flat areas – if necessary, incorporate a shadow line
- Where large flat areas are unavoidable, bonded boards of foam will ensure that the flashing achieves the correct appearance

Ash & Lacy Technical Staff can advise on the correct detailing of flashings

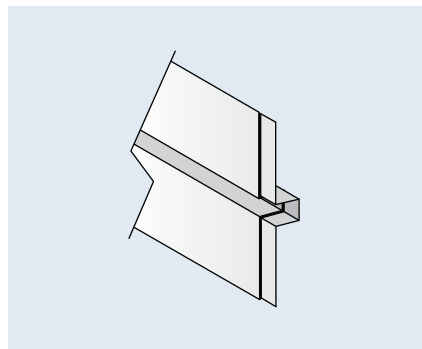
Stiffened edge



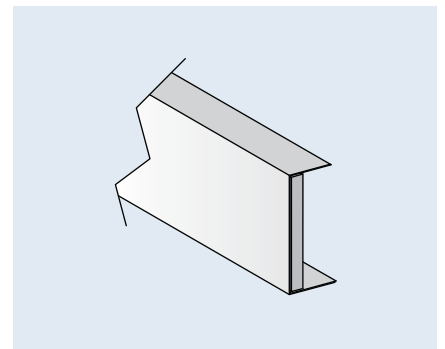
Shadow line



Flashing with sealant



Bonded flashing



The Building Regulations require that Cold Bridging is avoided and Air Tightness is achieved at all joints and junctions. Correct detailing will ensure that these requirements are met.

Special & Architectural Fabrications

The variety of special products available are as diverse as the buildings for which they are intended. The only limitation in material, colour, or detail is the imagination of the designer.



Continuous louvred ventilation units

Louvres
Standard details in Plastisol, PvdF² and aluminium. Produced to suit any opening square, rectangular, triangular, circular. Fixed or moveable blades.

Tapered Flashings
Manufactured to customers requirements

Cladding Corners
Mitred corners to any angle in profiled single skin cladding or composite panel.

Mitred Flashings

Rainwater Pipe Systems
Plastisol, PvdF², galvanised and aluminium. Circular, square and rectangular, compatible suite of accessories including standard integral sealed collars.

Bullnoses
Enhancing the perimeter of a building

Curved Flashings
Any radii, ellipses and full circular jambs.

Roof Soakers & Kerbs
Bespoke sizes in full material range.

Column Casings

Profile sheet and composite panel fabrications
Mitred and jointed sections using customer supplied components

Brise Soliel

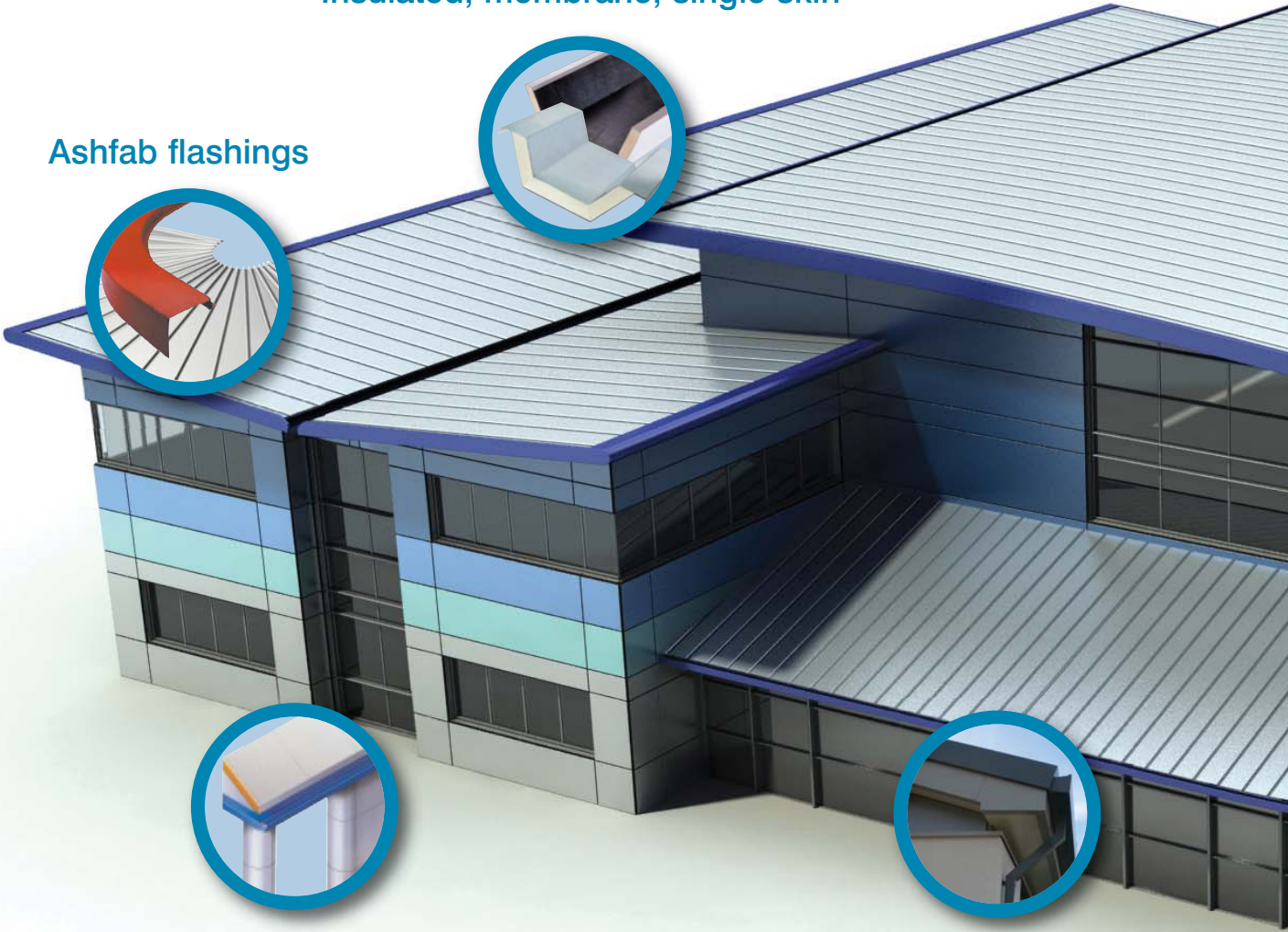
Fabrications Range

Ash & Lacy provide a solution whatever your requirements

Examples from our extensive fabrications range are shown here, but our Sales and Technical Staff can advise on any product that may be required.

Ashflow Gutters
Insulated, membrane, single skin

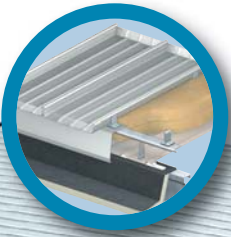
Ashfab flashings



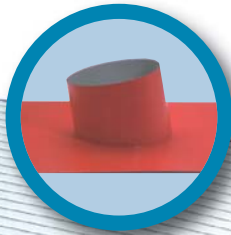
Ashfab
column casings

Ashflow
fascia gutters

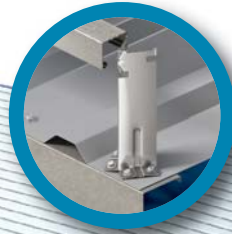
Ashzip roofing



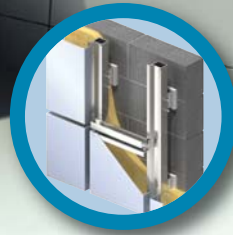
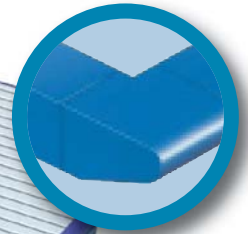
Ashfab soakers



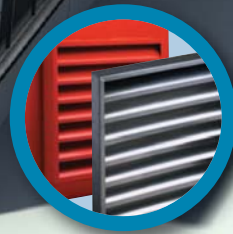
Ashgrid spacer systems



Ashfab bullnoses



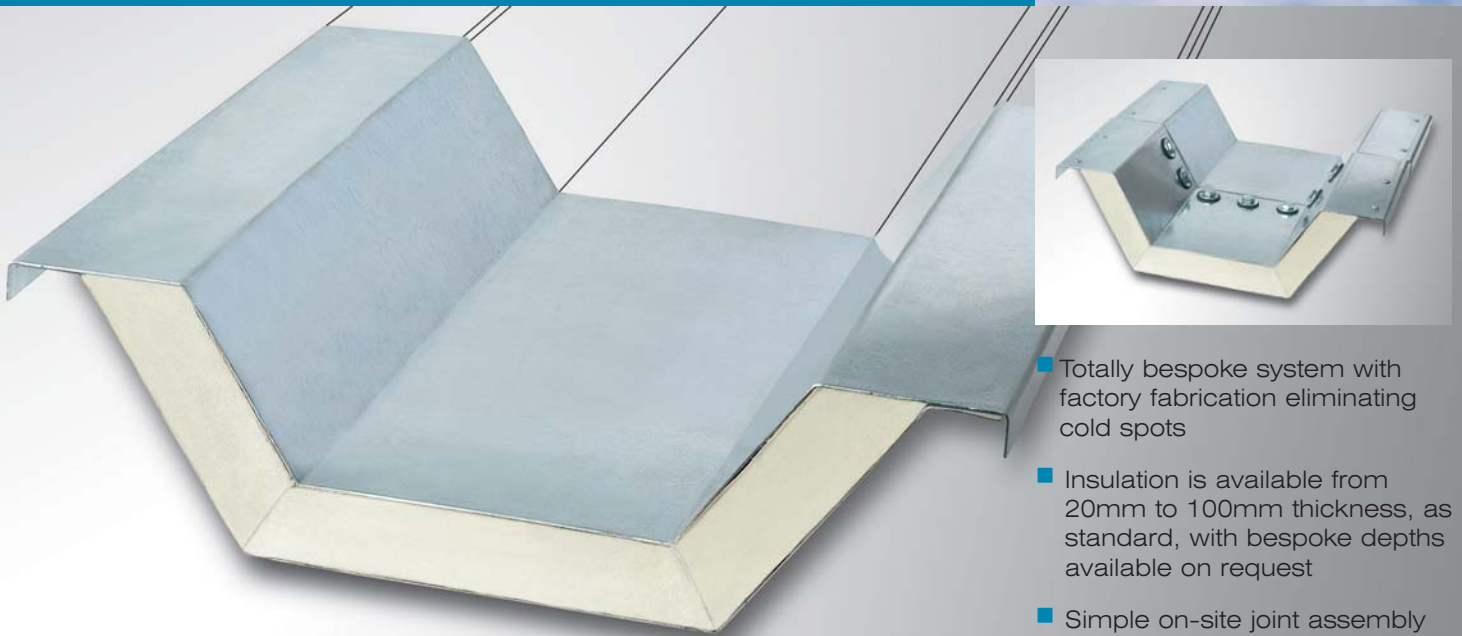
Ashtech rainscreen panels



Ashfab louvres

Rainwater Management

Effective rainwater management is vital to the success of any building. The Ashfab division of Ash & Lacy has vast experience in the provision of gutter systems and related products and has a depth of expertise and range which few can rival. Our commitment to Research and Development, as well as our current initiatives into sustainable solutions such as Rainwater harvesting, ensures the increasing efficiency of our systems to cope with a future in which ever more extreme climatic conditions can be expected.



- Totally bespoke system with factory fabrication eliminating cold spots
- Insulation is available from 20mm to 100mm thickness, as standard, with bespoke depths available on request
- Simple on-site joint assembly



As recognition of the environmental benefits of insulation has increased so has the practice of insulating all gutters within the building's envelope. Naturally this kind of application presents its own set of requirements which are quite different to conventional guttering.

Ashflow Insulated Gutters are manufactured to order and are available in different widths and varying depths of polyurethane, polyisocyanurate and mineral wool insulation bonded to the top external sheet to meet current 'U' values.

The bespoke system will of course conform exactly to the building's design and is easily put together on-site through joint assembly. Available with a full range of factory fitted accessories, Ashflow Insulated Gutters provide lasting performance in excess of 30 years. Gutters may have a weldable membrane included – see later for details.

Coated Gutters

Ashflow gutters are available with a range of internal coatings to suit specific applications, including Weldable Membrane, Lined, TCN440, Bitumen Paint & Chlorinated Rubber.



Aquatite™

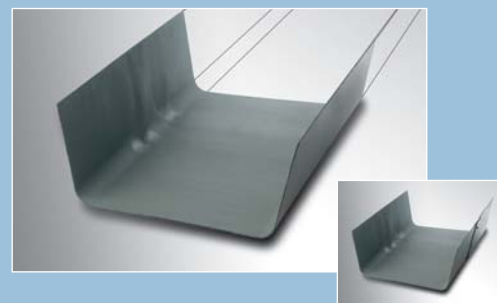
Through our close relationship with Tata Steel Colorsteel, we are able to offer a gutter membrane solution to meet the most exacting standards. Under its brand name Aquatite™, this Thermoplastic Polyolefin membrane covers a wide range of rainwater applications including valley gutters, flashings, roofing and parapet copings.

Aquatite™ offers a strong, formable metal substrate combined with a non-permeable weather resistant membrane factory-bonded to the water-carrying surface. This highly effective construction gives a superior quality finish for maximum drainage efficiency. It also comes with a leading guarantee and technical support, plus the reassurance of being a safe, green solution.

Schedetal

Schedatal is available in pvc and fpo.

Based on long term use, schedatal sets a standard for membranes used in building designs. Both membranes are a high quality product that offer a fast and secure installation and are also environmentally friendly and safe. The strong thermoplastic polyolefin polymer ensures rapid and uniform weldable joint requiring only hot air welding.



Raintite™/FATRA

For longevity and performance, Raintite is a superb system with a life expectancy of over 35 years Complete with 30 years BBA certification, the bonded waterproof membrane is formed of environmentally-friendly sealed PVC.

This offers a maintenance-free system which is designed to withstand ponding and other weather extremes. Available in a variety of colours and thicknesses, and applicable to both aluminium and steel rainwater products, this provides the flexible solution to a wide range of building designs.

EPDM bonded membrane system

Ashflow EPDM membrane gutter systems are fully factory bonded to eliminate the problems of corrosion, joint leakage and stability. It means we are able to offer a 15 year guarantee with a life expectancy in excess of 30 years.

Using an adhesive bond, the membrane sheets can be quickly fused together, resulting in a bond that is actually stronger than the sheet itself. For prestigious projects, Ashflow's membrane lined gutters will bring an unrivalled level of rainwater management over the long term.

Ashfold Linings & Single Skin Gutters



Ashfold Linings

All gutters have a finite lifespan and once they fail either through joint failure or corrosion the cost in water damage can be considerable. In the past, a long term effective refurbishment solution has been hard to achieve and often expensive, but with Ashfold's remedial lining system there is now a high quality answer for virtually any gutter design, dramatically increasing the longevity and continued performance of the original system.

- Products available in a range of materials
- Simple site assembly
- Standard and bespoke gutter systems available
- Ashfold weldable liner

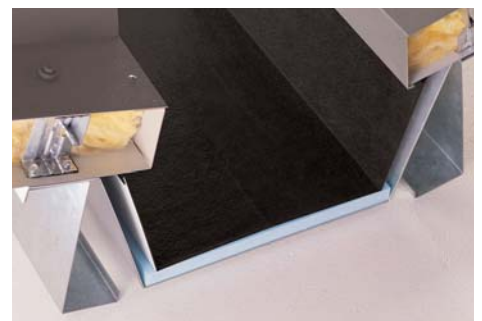
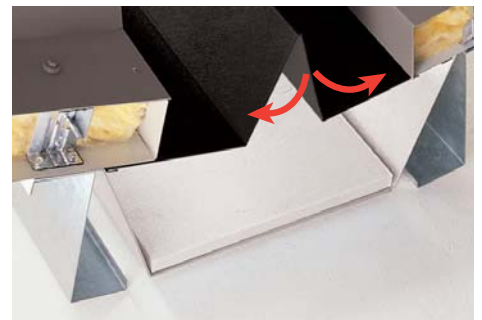
Ashfold linings are now available in two materials;

EPDM - a durable composite material of synthetic rubber and pre-coated steel laminate - adhesive joint.

Schedatal FPO - a strong thermoplastic polyolefin polymer ensuring a rapid and uniform weldable site joint.

The key to the products effectiveness is its ability to hinge and fold into any position thereby eliminating the problems of obstructions and confined areas which render more conventional methods ineffective.

The ease of installation means Ashfold can be installed in varying weather conditions with little disruption. Adhesive or Weldable joints can be quickly sealed to provide a watertight seal by using either EPDM or Schedatal membranes. Guarantees are available for Ashfold and its life expectancy is well in excess of 30 years.



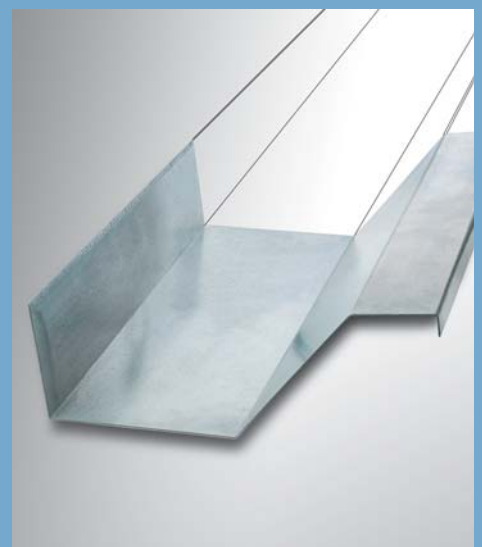
Single Skin Gutters

Where no insulation is required in external or internal gutters or when site assembly is required, Ashflow's single skin gutter systems provide the versatile solution. The products are available in a range of materials, including galvanised steel, aluminium and pre-coated for a comprehensive choice of colour finishes.

- Products available in a range of materials
- Simple site assembly

The single skin allows simple site assembly in a range of applications which includes Eaves, Boundary and Valley guttering and can be supplied with the accessories needed for specific usage. The systems have been designed for ease of use, efficiency and unobtrusive appearance.

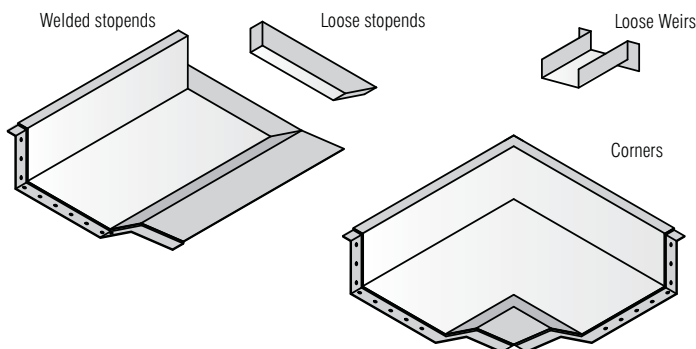
For many applications, Ashflow's range of standard profiles will meet the specification, but if a customised product is required Ash & Lacy offer a complete service which includes design and technical support as well as manufacture of the bespoke gutter system.



Other Rainwater Systems

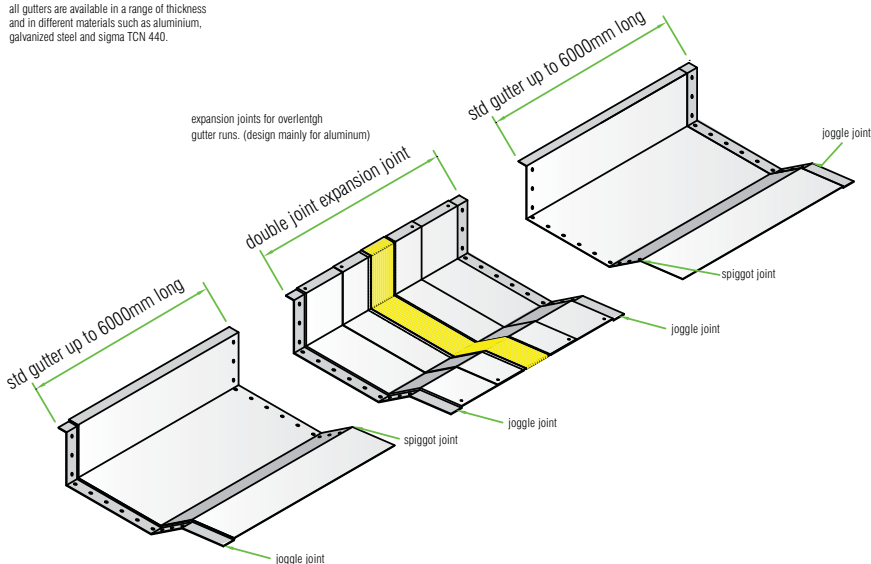
Available in Galvanised Steel or Aluminium finishes

Accessories for AshFlow Gutter Systems



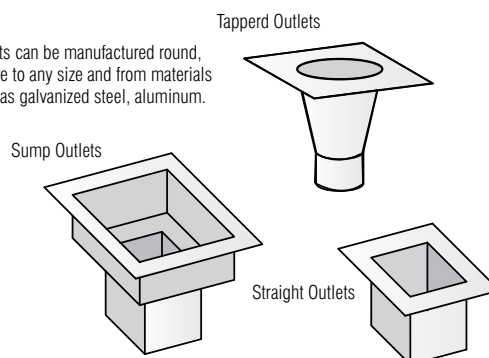
Component for AshFlow Gutter Systems

all gutters are available in a range of thickness and in different materials such as aluminium, galvanized steel and sigma TCN 440.

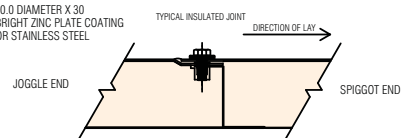


Gutter Outlets

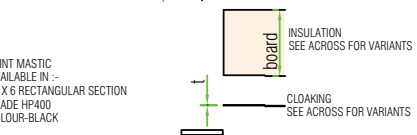
Outlets can be manufactured round, square to any size and from materials such as galvanized steel, aluminum.



JOINT FIXINGS
HEX. HEAD SET SCREWS/WASHERS
AVAILABLE IN :-
10.0 DIAMETER X 30
BRIGHT ZINC PLATE COATING
OR STAINLESS STEEL



E.P.D.M. WASHERS
AVAILABLE IN :-
10.0 DIA. X 2.0 THICK



JOINT MASTIC
AVAILABLE IN :-
50 X 6 RECTANGULAR SECTION
GRADE HP400
COLOUR-BLACK

GUTTER JOGGLE END
SEE ACROSS FOR VARIANTS

INSULATION
SEE ACROSS FOR VARIANTS

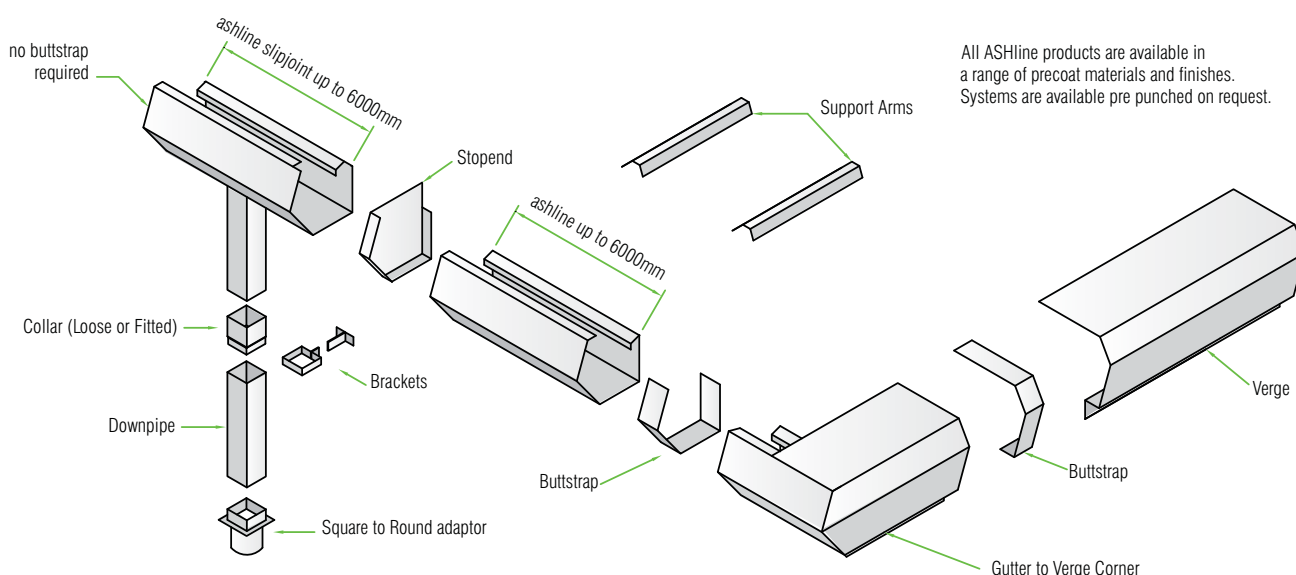
CLOAKING
SEE ACROSS FOR VARIANTS

INSULATION
SEE ACROSS FOR VARIANTS

CLOAKING
SEE ACROSS FOR VARIANTS

JOINT FIXINGS - CAPTIVE NUTS
AVAILABLE IN :-
10.0 DIAMETER HEXAGON EXT.
CADMIUM PLATE COATING
OR STAINLESS STEEL

Component for AshLine Gutter Systems



All AshLine products are available in a range of precoat materials and finishes. Systems are available pre punched on request.

Perimeters, Ashgrid & Ashfix



Perimeters

Having a thermally efficient cladding system does not mean that perimeter fabrications need to be deep and unsightly, even if a high 'U' value roof is required.

Ash & Lacy are able to offer slim line verge and eaves fabrications to be incorporated into the Ashzip roof construction.

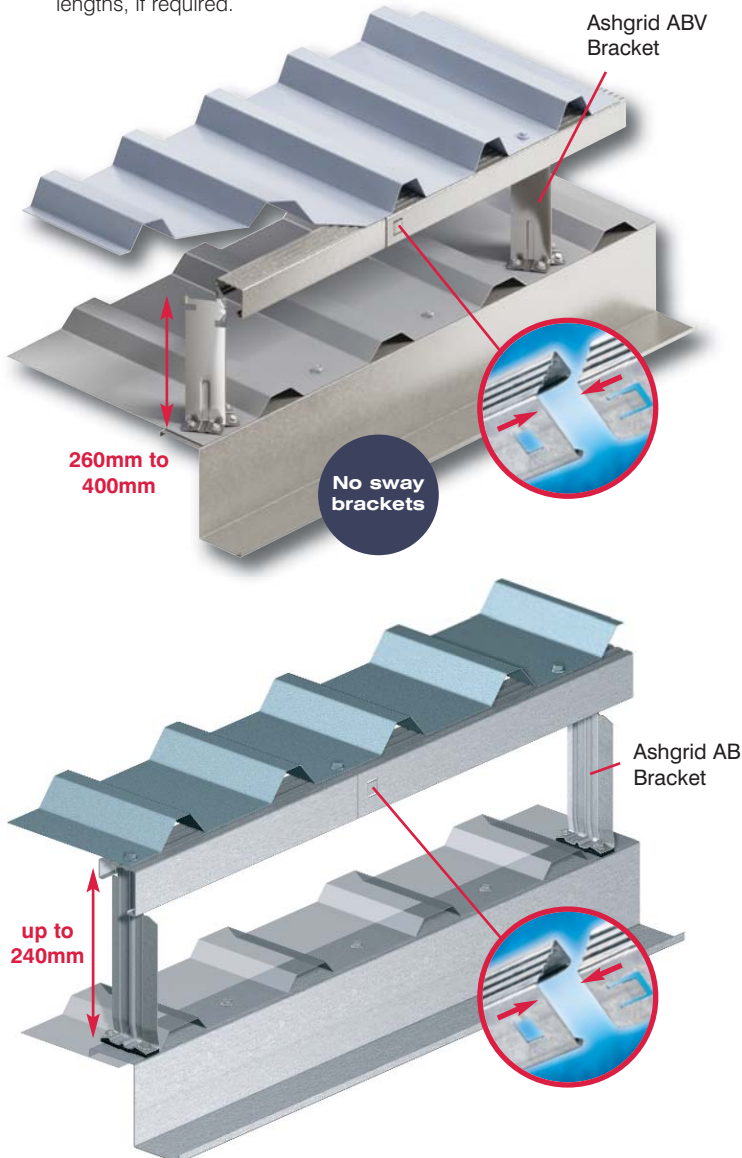
Ashjack is a range of galvanized steel brackets and spanning members, manufactured from galvanized steel to BS EN 10327 : 2004 (Fe PO2 G Z275), the components are approved by BBA. This provides the significant benefit of components being produced from high grade structural quality galvanised steel and have rigorous third party accreditation.

The use of BBA approved Ashjack components in conjunction with the Ashzip BBA approval means the specifier can be assured of complete confidence in the products being specified.

For further details of our range of perimeter details, refer to Ashzip - Slimline overhang, cantilever & bespoke perimeter framing details at www.ashandlacy.com

Ashgrid

The new Ashgrid 'V' Bracket can be supplied in shorter lengths, if required.



Please refer to Ashgrid literature for full product information

Ashfix

Branded product

- Complies with MCRMA charter
- Easy traceability throughout the life of a building

Available with nylon moulded colour heads

- Improved aesthetics
- Longer life expectancy
- UV Stabilised

Vulcanised washer

- 304 austenitic stainless steel
- 3mm EPDM sealing element

Support thread

- Enlarged diameter to support outer skin of composite panel

Engineered to comply with British Standards and ECCS tests

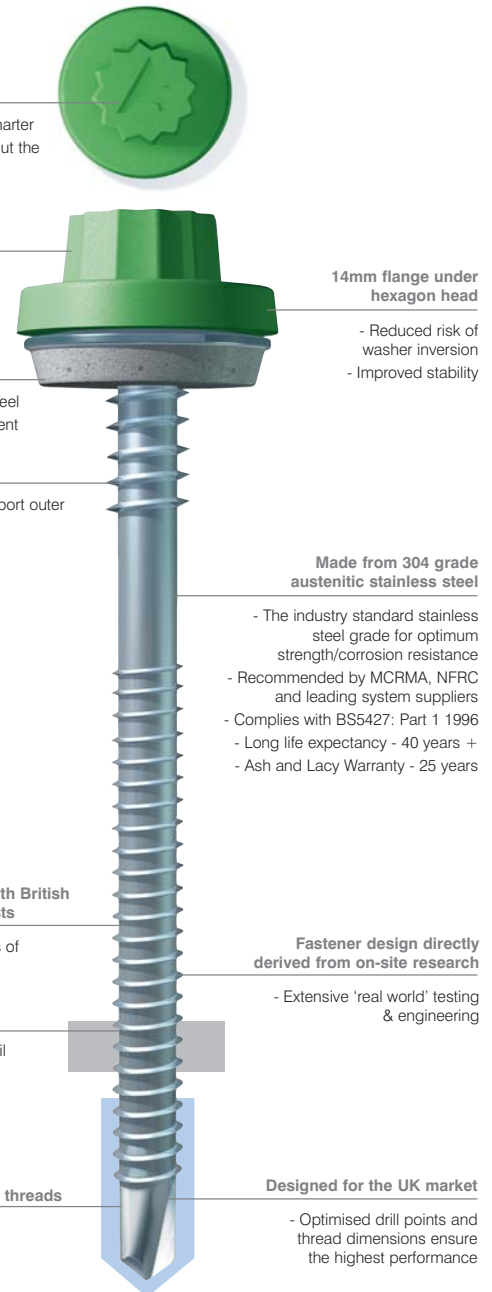
- Ideal for use with all types of composite panel

Longterm security

- All threads within purlin/rail from 304 grade austenitic stainless steel

Heat treated carbon steel drill point & lead-in threads

- Fast efficient drilling of purlins/sheeting rails



14mm flange under hexagon head

- Reduced risk of washer inversion
- Improved stability

Made from 304 grade austenitic stainless steel

- The industry standard stainless steel grade for optimum strength/corrosion resistance
- Recommended by MCRMA, NFRC and leading system suppliers
- Complies with BS5427: Part 1 1996
- Long life expectancy - 40 years +
- Ash and Lacy Warranty - 25 years

Fastener design directly derived from on-site research

- Extensive 'real world' testing & engineering

Designed for the UK market

- Optimised drill points and thread dimensions ensure the highest performance

Please refer to Ashfix literature for our full range and product information





AshFab Order Form

Glasgow Fax: 0141 950 6080 Tel: 0141 950 6040

Midlands Fax: 0121 525 3444 Tel: 0121 525 1444

London Fax: 020 8391 9701 Tel: 020 8391 9700

Flashings • Fast turnaround • 24 hour service • 6m lengths available

Gutters • Membrane • Single skin GBM/GAM • Aluminium • Insulated • Ashline

Fabrications • Curves • Louvres • Rainwater Pipes • Bullnoses • Corners Rainscreen • Composite Corners

Company Name _____ No. of pages _____

Delivery Address _____

Order No. _____ Order Date _____ Date Required _____

Ref	
Material	
Colour	
Quantity	
Girth	
Butt Straps	

Ref	
Material	
Colour	
Quantity	
Girth	
Butt Straps	

Ref	
Material	
Colour	
Quantity	
Girth	
Butt Straps	

Ref	
Material	
Colour	
Quantity	
Girth	
Butt Straps	

Ref	
Material	
Colour	
Quantity	
Girth	
Butt Straps	

Ref	
Material	
Colour	
Quantity	
Girth	
Butt Straps	

Ref	
Material	
Colour	
Quantity	
Girth	
Butt Straps	

Ref	
Material	
Colour	
Quantity	
Girth	
Butt Straps	

Special Instructions _____

Ordered by _____

Please note: all flashings will be manufactured as 3000mm unless otherwise stated. All angles will be 90° unless otherwise stated.



Spacer Support Systems
Rainscreen Cladding Systems
Standing Seam Roofing Systems
Over-Roof Conversion Systems
Fabrications and Flashings
Fasteners and Accessories

West Bromwich. Bromford Lane, West Bromwich, West Midlands B70 7JJ

Tel: 0121 525 1444 Fax: 0121 525 3444

also at: London. Gateway 3, Davis Road, Off Cox Lane, Chessington, Surrey KT9 1TD

Tel: 020 8391 9700 Fax: 020 8391 9701

Glasgow Unit 4b, Albion Trading Est, South Street, Whiteinch, Glasgow G14 0SY

Tel: 0141 950 6040 Fax: 0141 950 6080

E-mail enquiries to: sales@ashandlacy.com

Ash & Lacy reserve the right to amend product specifications without prior notice.
The information, technical details and fixings advice are given in good faith but are intended
as a guide only. For further information please contact Ash & Lacy Building Systems.
All products are supplied in accordance with the Ash & Lacy Terms & Conditions of Sale.

www.ashandlacy.com



ASH•LACY