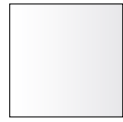


FINISHES

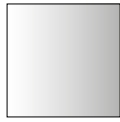
Finiture
Materialien
Finitions
Acabados

arper

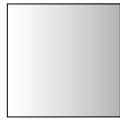
Metalli
Metals
Métalle
Métal
Metal



CRO



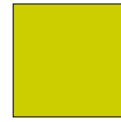
LU1



S03



V12
matt



V37
glossy



V41
semi-matt



V39
matt

Polipropilene monocolor
Polypropylene one colour
Polypropylen einfarbig
Polypropylène monocolor
Polipropileno monocolor



PO00401



PO00409



PO00404



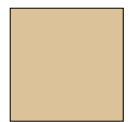
PO00412



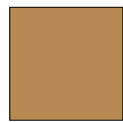
PO00413



PO00415



PO00420



PO00419

HPL



Anthracite

Legno
Wood
Holz
Bois
Madera



L0020



L0022



L0021



L0023

Cuoio
Hard leather grade 1
Kernleder
Cuir première qualité
Cuero



CU00033



CU00006

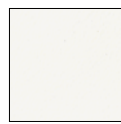


CU00026



CU00001

Cuoietto
Hard leather grade 2
Leder zweiter Qualität
Cuir deuxième qualité
Cuero segunda calidad



CT00030



CT00031



CT00070



CT00450



CT00029



CT00034



CT00120



CT00100



CT00090



CT00040



CT00110



CT00033



CT00020

Pelle
Soft leather
Weichleder
Cuir souple
Piel



PF00001



PF00002



PF00008



PF00010



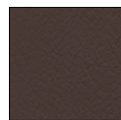
PF00003



PF00004



PF00005



PF00006



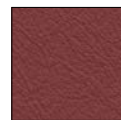
PF00007



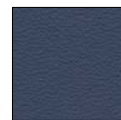
PF00009



PF00011



PF00012



PF00013



Ecopelle Valencia
 Faux Leather Valencia
 Kurnstleder Valencia
 Similcui Valencia
 Ecopiel Valencia

VL00001	VL00002	VL00020	VL00033	VL00034	VL00035
VL01001	VL01020	VL01048	VL01049	VL01050	
VL02001	VL02002	VL02020	VL02021	VL02062	VL02074
VL03001	VL03067	VL03068	VL03069	VL04001	VL04002
VL04020	VL04040	VL04041	VL04042	VL04043	VL04045
VL05001	VL05002	VL05041	VL05056	VL05057	VL05069
VL06003	VL06012	VL06013	VL06019	VL06020	VL07001
VL08032	VL09001	VL09035	VL090C02		

Arper grade
 CHAIRS: B

Arper grade
 SOFAS: A



CHROME FREE

ELMOSOFT è una pelle semi-anilina, morbida e flessibile. La sua morbidezza associata alla sua robustezza e ad una vasta gamma di colori disponibili rendono la pelle Elmosoft adatta ad un utilizzo nel contract. Punture di insetti e cicatrici visibili contribuiscono a valorizzare le caratteristiche di unicità ed eleganza di questa pelle.

ELMOSOFT is a soft and pliable Semi-Aniline leather. Outstanding comfort combined with excellent durability and an extensive shade card, makes it very suitable for the public environment. Visible insect-bites and scars from healed wounds add to the elegant quality of the leather.

ELMOSOFT. Weiches, geschmeidiges Semi-Anilinleder, Ein sehr strapazierfähiges und im Griff komfortables Leder in reicher Farbauswahl, hervorragend geeignet für Objektausstattungen. Sichtbar erhaltene Insektenstiche und kleine vernarbte Wunden betonen die naturechte Eleganz.

Elmosoft est un cuir semi-aniline, souple et doux. Son confort élevé, associé à une grande robustesse et à vste gamme de coloris disponibles, le rend particulièrement indiqué pour les collectivités. Les piqures d'insectes et les cicatrices visibles contribuent à rehausser le caractère élégant du cuir.

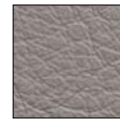
ELMOSOFT es una suave y flexible piel semianilina. Su destacable confort combinado con excelente durabilidad y una amplia carta de colores, la hacen muy adecuada para ambientes públicos. Picaduras de insectos visibles y cicatrices de heridas muestran la elegante calidad de la piel.



ES00100



ES00118



ES01003



ES01009



ES01021



ES01037



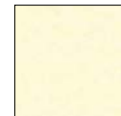
ES01040



ES01061



ES01085



ES02085



ES02110



ES05007



ES05011



ES06001



ES07008



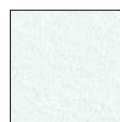
ES07029



ES07075



ES07080



ES08035



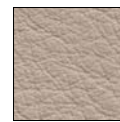
ES11033



ES11049



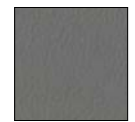
ES11073



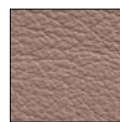
ES12080



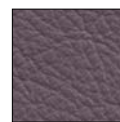
ES12105



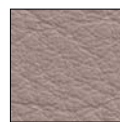
ES13048



ES13053



ES13064



ES13072



ES13087



ES16003



ES17027



ES22024



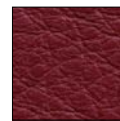
ES22030



ES33001



ES33004



ES35126



ES43054



ES43083



ES44005



ES44012



ES44026



ES45018



ES45050



ES45065



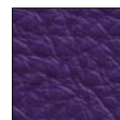
ES53032



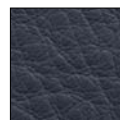
ES54035



ES55002



ES57349



ES71017



ES75010



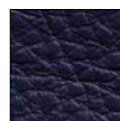
ES76025



ES77026



ES77030



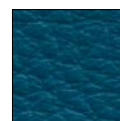
ES77127



ES77158



ES78023



ES87088



ES88005



ES88020



ES88033



CHROME FREE



ES91102



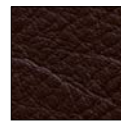
ES93068



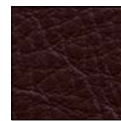
ES93099



ES93101



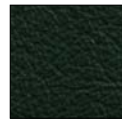
ES93129



ES95006



ES97038



ES98015



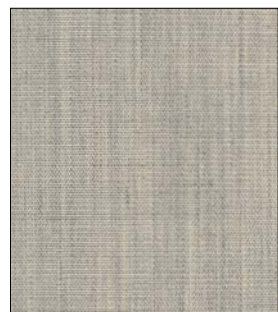
ES98047



ES99999

kvadrat

Canvas



CV00114



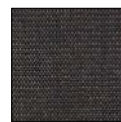
CV00124



CV00134



CV00154



CV00174



CV00224



CV00244



CV00254



CV00264



CV00364

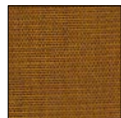


CV00374

Kvadrat's Canvas has been awarded the EU Ecolabel



CV00414



CV00424



CV00454



CV00614



CV00644



CV00654

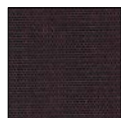


CV00674

Arper grade
CHAIRS: D



CV00684



CV00694



CV00734



CV00764



CV00794



CV00854



CV00954

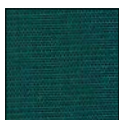
Arper grade
SOFAS: F



CV00964



CV00974



CV00984

kvadrat

Cava 3
(EU Ecolabel)



Kvadrat's Cava 3
has been awarded
the EU Ecolabel

Arper grade
CHAIRS: C

Arper grade
SOFAS: C

					
CA00212	CA00124	CA00132	CA00142	CA00153	CA00162
					
CA00364	CA00373	CA00414	CA00422	CA00432	CA00442
					
CA00464	CA00543	CA00552	CA00563	CA00633	CA00642
					
CA00662	CA00673	CA00683	CA00722	CA00732	CA00742
					
CA00763	CA00772	CA00782	CA00793	CA00794	CA00833
					
CA00852	CA00862	CA00872	CA00883	CA00932	CA00953
					
CA00972	CA00982	CA00993			

kvadrat

Clara 2



**Kvadrat's Clara 2
has been awarded
the EU Ecolabel**

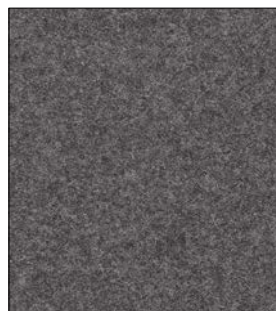
Arper grade
CHAIRS: D

Arper grade
SOFAS: E



kvadrat

Divina Melange 2



DM00170



DM00120



DM00180



DM00220



DM00260



DM00280



DM00421



DM00471



DM00521



DM00531



DM00571

Arper grade
CHAIRS: G

Arper grade
SOFAS: I



DM00581



DM00621



DM00631



DM00671



DM00681



DM00721



DM00731



DM00771



DM00821



DM00871



DM00920



DM00931



DM00971

kvadrat

Divina MD



DI00193



DI00203



DI00213



DI00293



DI00343



DI00353



DI00363



DI00413



DI00433



DI00453



DI00613

Arper grade
CHAIRS: G

Arper grade
SOFAS: I



DI00633



DI00653



DI00673



DI00683



DI00713



DI00733



DI00743



DI00753



DI00773



DI00783



DI00813



DI00843



DI00873



DI00913



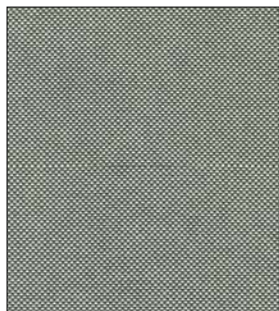
DI00943



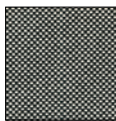
DI00973

kvadrat

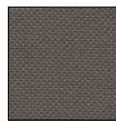
Field



FI00132



FI00142



FI00172



FI00182



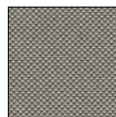
FI00192



FI00222



FI00232



FI00242



FI00252



FI00382



FI00432

Arper grade
CHAIRS: B

Arper grade
SOFAS: C



FI00542



FI00642



FI00662



FI00682



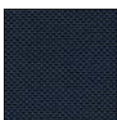
FI00752



FI00762



FI00772



FI00782



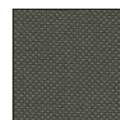
FI00932



FI00942



FI00952



FI00972



FI00982

kvadrat

Hallingdal 65
(EU Ecolabel)



Kvadrat's Hallingdal 65
has been awarded the
EU Ecolabel

Arper grade
CHAIRS: G

Arper grade
SOFAS: G



kvadrat

Jumper 3

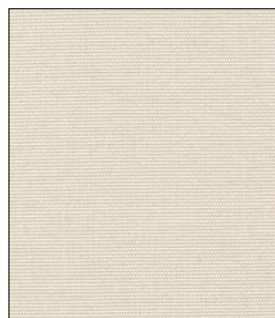
Utilizzo all'esterno:
solo per Pix Outdoor

Outdoor use:
only for Pix Outdoor

Außeneinsatz:
nur für Pix Outdoor

Utilisation en extérieur:
seulement pour Pix Outdoor

Uso en exteriores:
sólo para Pix Outdoor



JU00001



JU00002



JU00011



JU00013



JU00014



JU00016



JU00021



JU00023

Arper grade
CHAIRS: D

Arper grade
SOFAS: D

kvadrat

Pause 4

Arper grade
CHAIRS: C

Arper grade
SOFAS: C



kvadrat

Pro 3

Arper grade
CHAIRS: E

Arper grade
SOFAS: E



kvadrat

Remix 2
(EU Ecolabel)



Kvadrat's Remix 2
has been awarded
the EU Ecolabel

Arper grade
CHAIRS: C

Arper grade
SOFAS: D



(*) RX00113 - RX00223: only for the cushions Owl, Lines, Pleats e Gego.

kvadrat

Revive 1

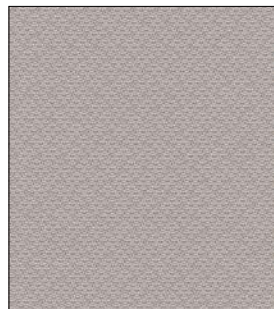
Arper grade
CHAIRS: **B**

Arper grade
SOFAS: **B**

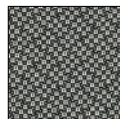


kvadrat

Revive 2



R200133



R200153



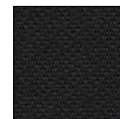
R200163



R200173



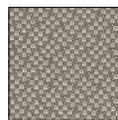
R200183



R200193



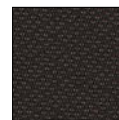
R200223



R200323



R200373



R200383



R200423

Arper grade
CHAIRS: B



R200433



R200453



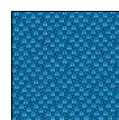
R200523



R200633



R200663

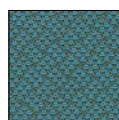


R200753



R200773

Arper grade
SOFAS: B



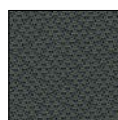
R200833



R200923



R200933



R200973

kvadrat

Savanna



SA00122



SA00152



SA00192



SA00202



SA00222



SA00242



SA00262



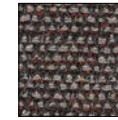
SA00292



SA00442



SA00622



SA00672



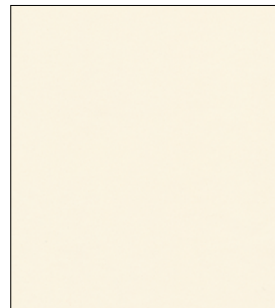
SA00952

Arper grade
CHAIRS: G

Arper grade
SOFAS: G

kvadrat

Scuba



SQ00001



SQ00002



SQ00003



SQ00004



SQ00005



SQ00006



SQ00007



SQ00008



SQ00009



SQ00010



SQ00011



SQ00012



SQ00013



SQ00014



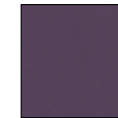
SQ00015



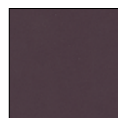
SQ00016



SQ00017



SQ00018



SQ00019



SQ00020



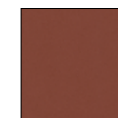
SQ00021



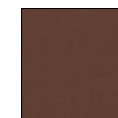
SQ00022



SQ00023



SQ00024



SQ00025

Arper grade
CHAIRS: E

Arper grade
SOFAS: G

kvadrat

Steelcut Trio 2



Kvadrat's Steelcut Trio 2

has been awarded the

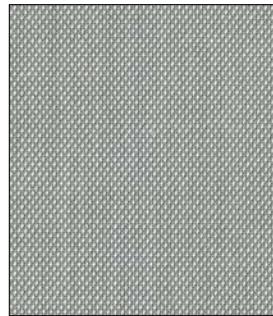
EU Ecolabel

Arper grade

CHAIRS: G

Arper grade

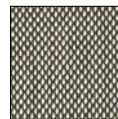
SOFAS: H



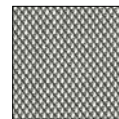
ST00113



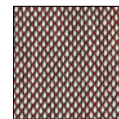
ST00105



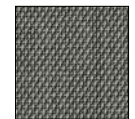
ST00124



ST00133



ST00144



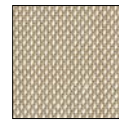
ST00153



ST00195



ST00205



ST00213



ST00225



ST00235



ST00245



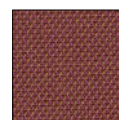
ST00253



ST00283



ST00325



ST00333



ST00353



ST00383



ST00395



ST00413



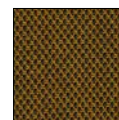
ST00415



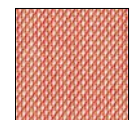
ST00425



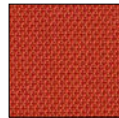
ST00453



ST00465



ST00515



ST00533



ST00553



ST00565



ST00645



ST00653



ST00665



ST00675



ST00683



ST00713



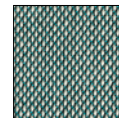
ST00733



ST00745



ST00753



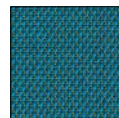
ST00815



ST00825



ST00845



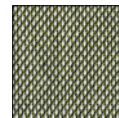
ST00853



ST00865



ST00883



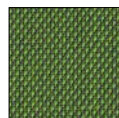
ST00915



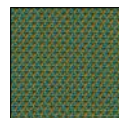
ST00933



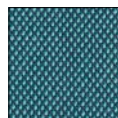
ST00945



ST00953



ST00965



ST00983

kvadrat

Sunniva 2



SU00132 SU00143 SU00152 SU00172 SU00192 SU00236
SU00242 SU00352 SU00422 SU00532 SU00552

Arper grade
CHAIRS: G

Arper grade
SOFAS: I



SU00632 SU00642 SU00652 SU00662 SU00672 SU00717 SU00752
SU00762 SU00772 SU00811 SU00932 SU00952 SU01079

kvadrat

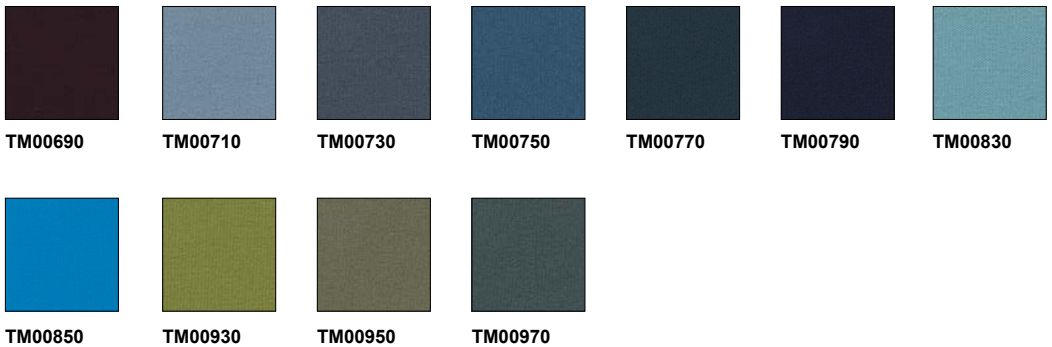
Tempo



TM00130 TM00170 TM00190 TM00230 TM00250 TM00370
TM00550 TM00570 TM00630 TM00650 TM00670

Arper grade
CHAIRS: E

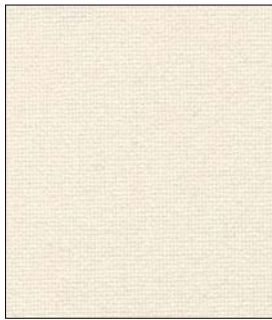
Arper grade
SOFAS: E



TM00690 TM00710 TM00730 TM00750 TM00770 TM00790 TM00830
TM00850 TM00930 TM00950 TM00970

kvadrat

Tonus 4



T300100



T300118



T300125



T300128



T300129



T300130



T300131



T300132



T300135



T300207



T300210



T300216



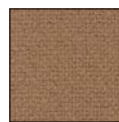
T300224

Arper grade
CHAIRS: F

Arper grade
SOFAS: G



T300240



T300244



T300364



T300374



T300394



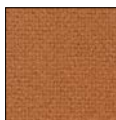
T300424



T300440



T300454



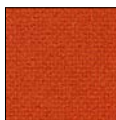
T300464



T300474



T300508



T300554



T300605



T300608



T300609



T300610



T300613



T300615



T300619



T300631



T300634



T300636



T300654



T300664



T300684



T300690



T300754



T300764



T300854



T300914



T300934



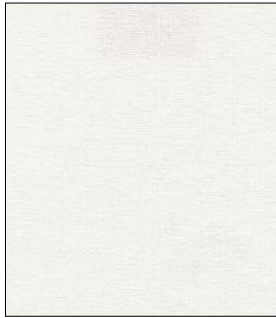
T300954



T300964



T300974



JE00001



JE01001



JE01006



JE02010



JE02012



JE02024

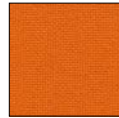


JE03019

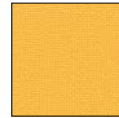
Jet



JE03030



JE03036



JE03090



JE04007



JE04017



JE04018

Arper grade
CHAIRS: A



JE04027



JE04028



JE04051



JE06007



JE06013



JE06014



JE06056



JE06091

Arper grade
SOFAS: A



JE06095



JE06098



JE07014



JE07025



JE07034



JE07041



JE08001



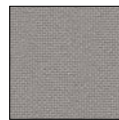
JE08009



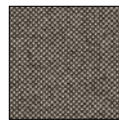
JE08017



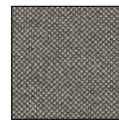
JE08033



JE08078



JE09108



JE09109



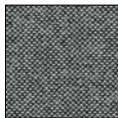
JE09110



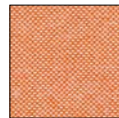
JE09219



JE09281



JE09294



JE009301



JE09302



JE09304



JE09305



JE09401



JE09402



JE09403



JE09404



JE09501



JE09600



JE09601



JE09602



JE09603



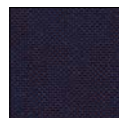
JE09604



JE09605



JE09606



JE09607



JE09608



JE09609



JE09610



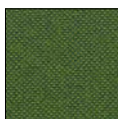
JE09701



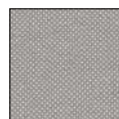
JE09702



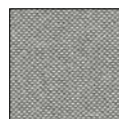
JE09703



JE09704



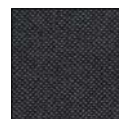
JE09803



JE09804



JE09805



JE09806



Style



Arper grade
CHAIRS: D

Arper grade
SOFAS: D

Standard contrast stitching
Cucitura a contrasto standard
Standard Kontrast Nähte
Surpiqûre standard à contrast
Costura contraste estándar



CT00120
Cucitura in ocre
Ochre stitching
Ockergelbe Nähte
Surpiqûre en Ocre
Ocre costura



CT00031
Cucitura in grigio scuro
Dark grey stitching
Dunkelgraue Nähte
Surpiqûre en gris foncé
Gris oscuro costura



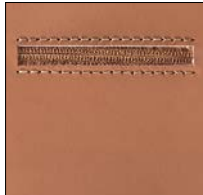
CT00040
Cucitura in nero
Black stitching
Schwarze Nähte
Surpiqûre en noir
Negro costura

Esempio di cerniere a contrasto su richiesta
Samples of contrast zippers available upon request
Beispiele für Reißverschlüsse in Kontrastfarbe auf Anfrage
Exemples pour fermetures éclair en couleur contraste sur demande
Cremallera contrastada sobre pedido



CT00450
Cerniera in marrone
Brown zip
Reißverschluss Braun
Soufflet marron
Marron cremallera

Esempio di cerniere tono su tono standard
Simple standard matching zip
Beispiel Standard Farbgleich Reißverschluss
Élément décoratif standard ton sur ton
Muestra Cremallera estándar a tono



CT00100
Cerniera in marrone
Brown zip
Reißverschluss Braun
Soufflet marron
Marron cremallera



Istituito nel 1992, il marchio comunitario di qualità ecologica o Ecolabel, il cui logo è rappresentato da un fiore, è uno speciale sistema di certificazione creato per aiutare i consumatori europei a scegliere prodotti e servizi più ecologici e più rispettosi dell'ambiente.

Established in 1992, the EU Eco-label "Flower" is a unique certification scheme aimed to help European consumers distinguish greener, more environmentally friendly, products and services.

Hinter der "Blume", dem 1992 ins Leben gerufenen EU-Umweltzeichen, steckt ein einzigartiges Zertifizierungssystem, das dem europäischen Verbraucher das Erkennen umweltfreundlicherer Produkte und Dienstleistungen erleichtern soll.

Établi en 1992, le label écologique de l'EU symbolisé par la "Fleur" est un système d'homologation unique destiné à aider les consommateurs européens à discerner les produits et services plus verts et plus favorables à l'environnement.

Creada en 1992, la etiqueta ecológica de la UE, también conocida como "la flor", constituye un sistema de certificación único, cuyo objetivo es ayudar a los consumidores europeos a identificar los productos y servicios más ecológicos y respetuosos del medio ambiente.

Maintenance advice

Table-tops and seat panels/shells made of wood, polypropylene, polyethylene or polyurethane

May be cleaned with a damp, soft cloth or sponge using lukewarm water. Neutral diluted detergent may also be used in lukewarm water. Strong detergents which contain bleach or which have an abrasive effect (such as scouring creams) should be avoided at all costs.

Laminate surfaces

May be cleaned with strong products such as normal detergents for domestic surfaces diluted in lukewarm water, provided that they are not abrasive and do not contain acids or bleach. Avoid sponges and scourers made from synthetic fibres or metal which may leave permanent scratches on the surfaces.

Chrome, anodised or lacquered surfaces

May be cleaned with strong products such as normal detergents for domestic surfaces diluted in lukewarm water, provided that they are not abrasive and do not contain acids or bleach. Avoid sponges and scourers made from synthetic fibres or metal which may leave permanent scratches on the surfaces. The products must be properly rinsed so that traces of the detergents do not spoil the special finish by causing the surface to turn opaque or to oxidise. After washing, dry it with a chamois leather. Polishes for chromed or lacquered finishes are not recommended: they should be used with caution and only by experts since the abrasive action may irreparably damage the surfaces.

Fabric

May be treated using damp brushes, possibly with light detergent or vinegar, both of which should be very dilute. Alternatively, it can be drycleaned using appropriate products. For best care and maintenance results please follow the indications given by the ENI-EN-ISO 3758 symbols on the relevant fabric information sheet.

Hard leather grade 1, hard leather grade 2 and soft leather

Must not be cleaned with water as this may leave marks. It is better to use quality products for cleaning leather, carefully following the instructions of the manufacturer of the cleaning product. In case of doubt test the product on a small area which is normally hidden from view in order to check the result, waiting at least 24 hours to allow any possible problems to develop.

Stainless steel

Clean regularly (every 15 to 20 days) with a soft damp cloth or with special products for cleaning stainless steel available on the market.

Faux leather

May be cleaned with a damp, soft cloth using lukewarm water.

I colori visualizzati sono puramente indicativi e possono variare rispetto alla realtà. Rivolgersi ad Arper o al proprio rivenditore di fiducia per ricevere un campione colore o per maggiori informazioni.

Colours shown are used for reference only and may look different in reality. Please contact Arper or your retailer to receive a colour sample or more information.

Bei den angezeigten Farben handelt es sich um reine Farbbeispiele, die von der Realität abweichen können.
Für Farbmuster und nähere Informationen wenden Sie sich bitte an Arper oder an den Händler Ihres Vertrauens.

La reproduction photographique des couleurs n'est que purement indicative et peut être différente de la réalité. S'adresser à Arper ou à votre revendeur de confiance pour recevoir un échantillon de couleur ou pour de plus amples informations.

Los colores visualizados son meramente indicativos y pueden diferir de la realidad. Para recibir una muestra del color o para más información, contactar a Arper o a su distribuidor de zona.

Arper SPA si riserva di apportare modifiche e/o migliorie di carattere tecnico ed estetico ai propri modelli e prodotti in qualsiasi momento e senza preavviso.
Per maggiori informazioni visitate il sito www.arper.com

Arper SPA reserves the right to make modifications and improvements of a technical or aesthetic nature to the products at any time without notice.
For further information, please visit www.arper.com

Arper SPA
Via Lombardia 16
31050 Monastier di Treviso (TV)
Italia

T +39 0422 7918
F +39 0422 791800
info@arper.com
www.arper.com

Commerciale Italia
T +39 0422 791905 / 791872
F +39 0422 791900
commerciale@arper.com

Export Office
T +39 0422 791902 / 4 / 6 / 7 / 8 / 9 / 16 / 17 / 27
F +39 0422 791900
sales@arper.com

Europe:

London — UK
11 Clerkenwell Road
London EC1M 5PA
T +44 (0) 20 7253 0009
london@arper.com

Cologne — Germany
Design Post Köln
Deutz-Mülheimer-Str. 22a
50679 Cologne
T +49 221 690 650
info@designpost.de

Milan — Italy
Via Pantano 30
20122 Milan
T +39 02 89093865
milano@arper.com

Stockholm — Sweden
Banérgatan 10
Stockholm
sweden@arper.com

Oslo — Norway
Drammensveien 130
0277 Oslo
T +47 930 59 226
cj@nextlevel-design.com

Amsterdam — The Netherlands
Design Post
Cruquiusweg 111-P
1019 AG Amsterdam
T +31 (0)20 705 1555
showroom@beltane.nl

Copenhagen — Denmark
Pakhus 48
Klubiensvej 26,
DK-2150 Nordhavn
T +45 71 99 63 88
info@hornbakco.com

Worldwide:

New York — USA
476 Broadway, Suite 2F
PO Box 1683
NY 10013 New York
T +1 (212) 647 8900
infousa@arper.com

Dubai — UAE
U-Bora Towers - Unit 1901
Business Bay
Dubai
T +971 509144800
infome@arper.com

Chicago — USA
The Merchandise Mart
Space#339 - 3rd Floor
Chicago
USA
T +1 (212) 647 8900 x1
infousa@arper.com