



Doc M Contour 21 Shower Room Pack

Illustrated

S6960 Shower room pack with folding shower seat and back support in grey, 3 x 60cm grab rails, 2 x hinged rails and 2 x 45cm grab rails, lever operated thermostatic mixer for concealed supplies, shower handset holder, handset & hose, fixed short projection shower head. lever operated diverter.

Configuration options

Material

Mixed Material

Weights

S6960 69.65KG

Colours

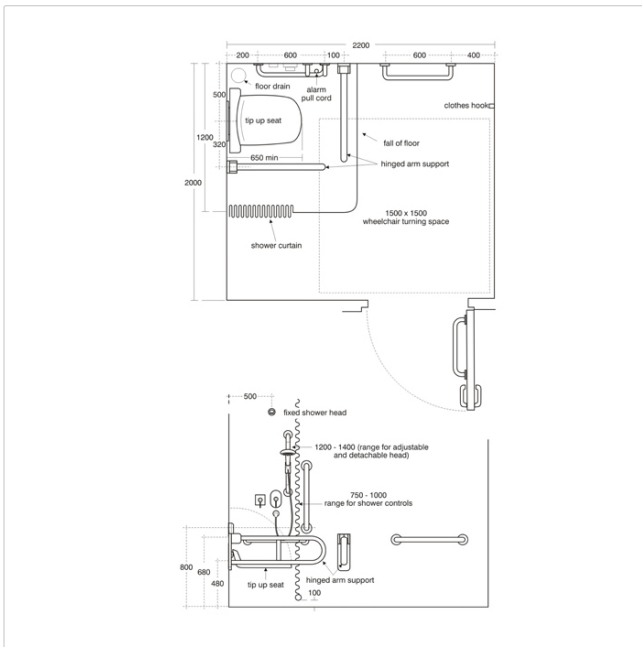
White (AC)
 Blue (LI)
 Grey (LJ)
 Charcoal (RN)
 Stainless Steel finish (MY)

Special Notes

For LRV and RAL numbers see Doc M introduction.
 Fixing heights: Floor to top of shower seat 480mm. Floor to centre of back rest of rail 800mm. Floor to centre of horizontal grab rail 800mm

Flow rates

7.5 Litres per minute @ 3 bar pressure



Frequently used applications

Education	Factory
General Healthcare	Hotels
Office	Public Building
Pubs and Clubs	Retail
Sports and Leisure	

Features

DocM
 Special Care
 Water Saving

Accreditations

LANTAC