



## Doc M Contour 21 Close Coupled Pack LH

### Illustrated

**S6966** Doc M Contour 21 close coupled left hand corner pack, WC pan, water saving delay fill cistern with spatula lever, basin, grab rails, hinged support rail with toilet roll holder, seat no cover with retaining buffers, copper tails on TMV3 mixer tap

### Configuration options

#### Material

Mixed Material

#### Weights

S6966 69.65KG

#### Colours

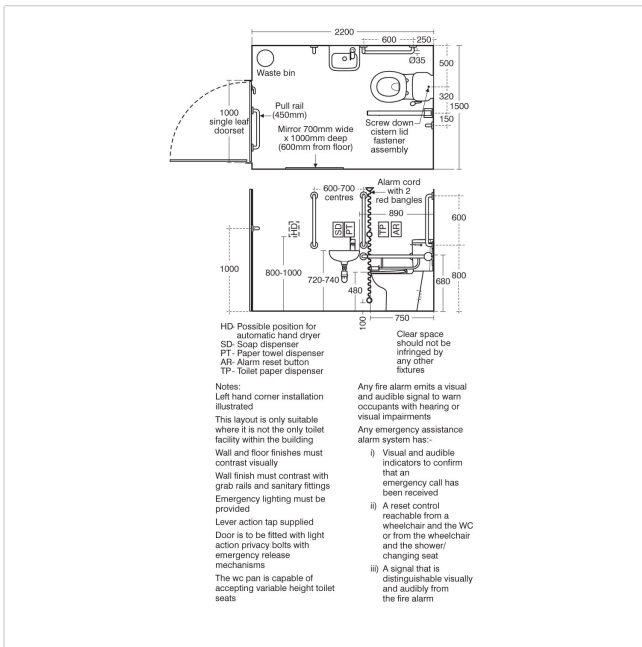
Stainless Steel finish (MY)  
White (AC)  
Blue (LI)  
Grey (LJ)  
Charcoal (RN)

#### Standards

Vitreous china to BS 3402

#### Special Notes

Doc M packs are available both right and left hand corner arrangement, illustrated is left hand arrangement. Supplied with layout drawings, detailing the fixing positions necessary for Doc M compliance



### Frequently used applications

Education	Factory
Hotels	Office
Public Building	Pubs and Clubs
Retail	Sports and Leisure

### Features

DocM  
Special Care  
Water Saving

### Accreditations

LANTAC