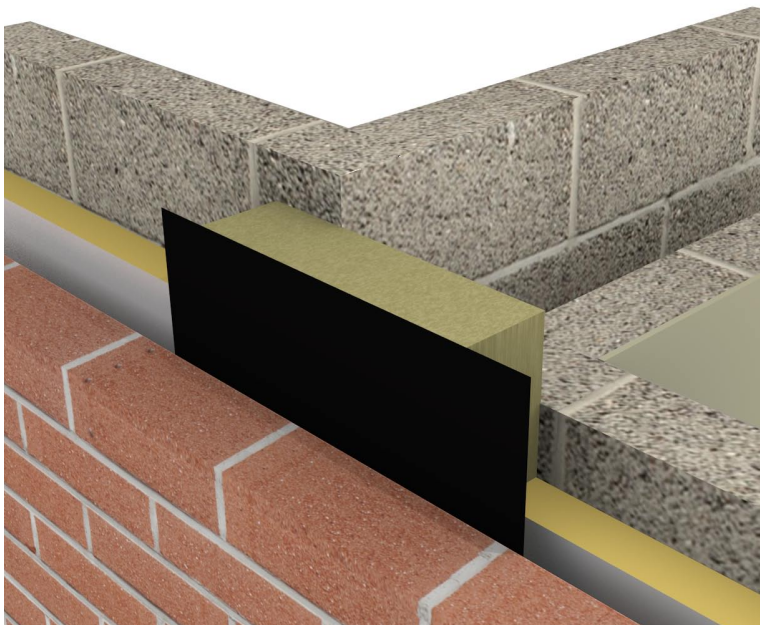




Party Wall DPC



Key Features

- Up to four hours fire integrity
- Specified in semi-detached, apartments and major projects
- Part E Robust Detail compliant
- Vertical and horizontal applications
- Available for cavity sizes 50 - 300mm



Description

The ARC Fire and Acoustic Party Wall DPC is manufactured from lengths of rockfibre mineral wool bonded to a polyethylene DPC. It is designed to enable the closing of an external cavity both vertically at the junction with a party wall and horizontally at separating floor levels, where building regulations require the use of a mineral wool closer for acoustic insulation purposes. The ARC Party Wall DPC also restricts the spread of flames along the cavity with a four hour fire integrity as tested by Warrington Fire Research.

Installation

The ARC Party Wall DPC is designed to be friction fitted within the cavity as the brick and blockwork progresses. Care should be taken to ensure that butt joints are compressed together as tightly as possible to ensure a tight fit without any gaps.

When fitted horizontally, the ARC Party Wall DPC is designed to be fitted level with the floor slab. The overlap of the DPC is fitted between the mortar joints above to provide a cavity tray.

Fire Properties

ARC Party Wall DPCs are manufactured using rockfibre mineral wool which achieves a fire classification of Euroclass A1 as defined in BS EN 13501-1.

ARC Party Wall DPCs are tested at Warrington Fire Research, achieving up to four hours fire integrity with traditional masonry construction and up to one hour in a timber frame construction. These tests comply with BS 476: Part 20: 1987 and BSEN 1366-4: 2006, using the test method stated EGOLF TC2 N421 (fire resistance for cavity barriers).

Warrington Fire Research certificate number: 189654 Chiltern International Fire Research certificate number: Chilt/IF12020

Thermal Properties

ARC's rockfibre mineral wool insulation has a thermal conductivity of 0.037W/mK.

Acoustic Properties

Part E Robust Details compliance:

	Separating Wall/ Party Wall	Separating Floor
Masonry	E-WM 1-21	N/A
Timber Frame	E-WT 1-4	E-FT 1-6
Concrete	N/A	E-FC 1-14

Standards

The rockfibre mineral wool used in the manufacture of ARC Party Wall DPC conforms to BS EN 13162 and EN16001 Energy Management Systems. The DPC is manufactured in accordance with BS 6515.

Storage and Packaging

ARC Party Wall DPCs are supplied in polythene packs which are designed for transporting and protecting the products. It is not recommended that the packs are stored in direct sunlight as the polythene which encapsulates the barriers can be damaged. When storing the barriers for longer periods of time it is recommended that the product should be stored indoors, or under cover.

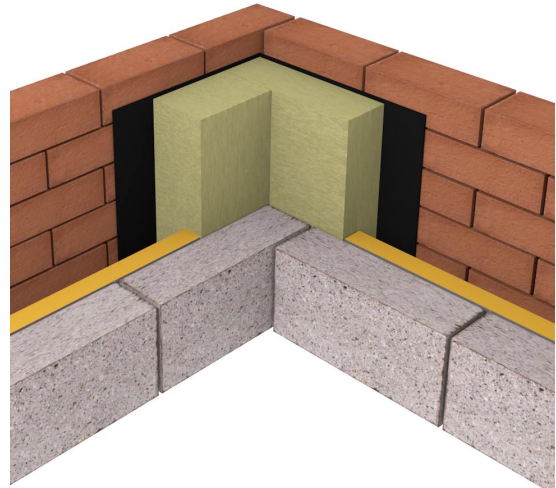
Environment

ARC's rockfibre mineral wool has no CFCs or HCFCs involved in the manufacturing process and represents no known threat to the environment, and is classed as zero ODP and zero GWP.

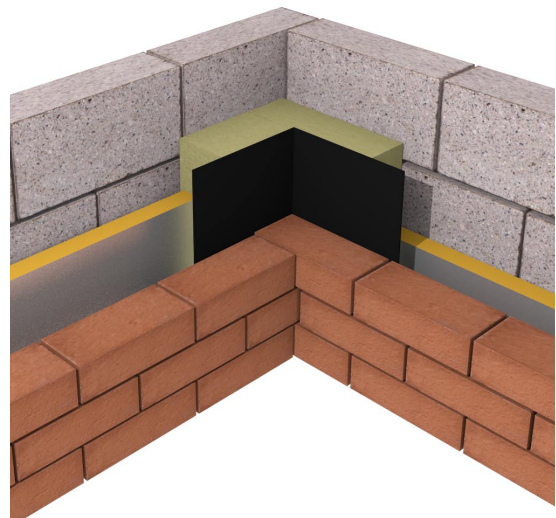
ARC Party Wall DPCs have a Green Guide rating of A+.

Dimensions & Packaging Specification

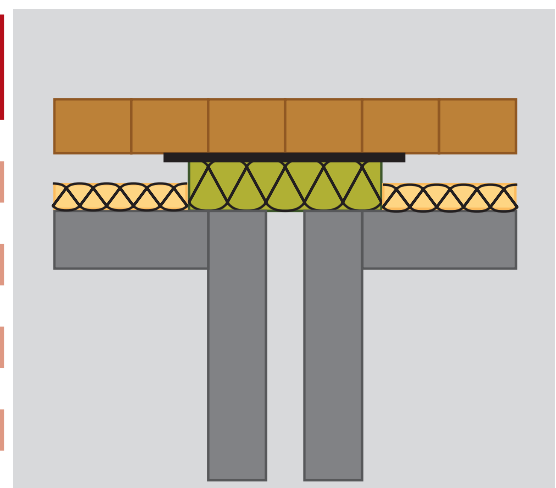
Product Code	Suitable for Cavity Width	Dimensions	Pack Qty	Packs Per Pallet	Fire Rating
PW50	50mm	50 x 260 (340 DPC) x 1200mm	12	14	4 hrs
PW75	75mm	75 x 260 (340 DPC) x 1200mm	8	14	4 hrs
PW85	85mm	85 x 260 (340 DPC) x 1200mm	6	14	4 hrs
PW90	90mm	90 x 260 (340 DPC) x 1200mm	6	14	4 hrs
PW100	100mm	100 x 260 (340 DPC) x 1200mm	6	14	4 hrs
PW115	115mm	115 x 260 (340 DPC) x 1200mm	4	14	4 hrs
PW125	125mm	125 x 260 (340 DPC) x 1200mm	4	14	4 hrs
PW140	140mm	140 x 260 (340 DPC) x 1200mm	4 </td <td>14</td> <td>4 hrs</td>	14	4 hrs
PW150	150mm	150 x 260 (340 DPC) x 1200mm	4	14	4 hrs
PW175	175mm	175 x 260 (340 DPC) x 1200mm	4	14	4 hrs
PW200	200mm	200 x 260 (340 DPC) x 1200mm	4	14	4 hrs
PW250	250mm	250 x 260 (340 DPC) x 1200mm	4	14	4 hrs
PW300	300mm	300 x 260 (340 DPC) x 1200mm	4	14	4 hrs



Above: L shaped Party Wall DPC with DPC on long leg (outside)



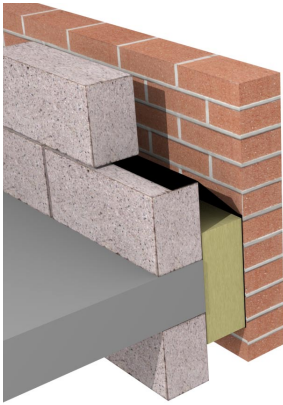
Above: L shaped Party Wall DPC with DPC on short leg (inside)



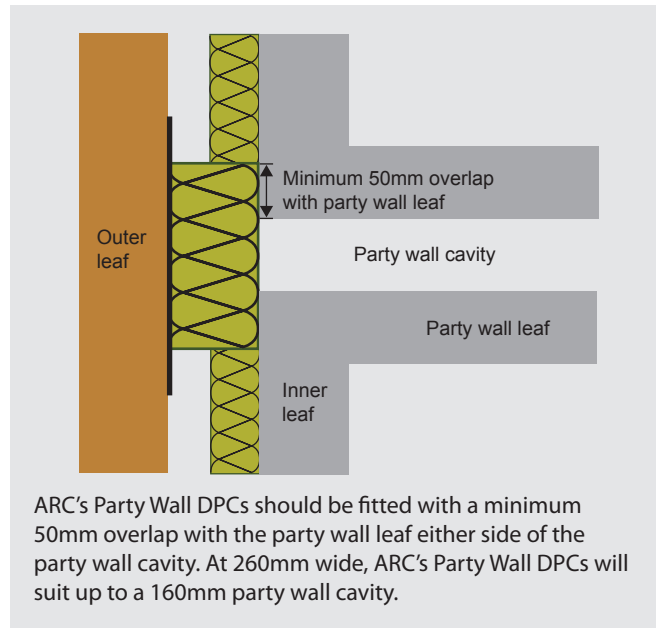
Above: Plan view of Party Wall DPC at party wall junction in standard masonry construction

Health and Safety

ARC Building Solutions has an approved Health and Safety Policy and is committed to working and supplying products safely. ARC's rockfibre mineral wool is not classed as a possible human carcinogen. We have assessed products as required by Substances Hazardous to Health Regulations (COSHH). An ARC COSHH data sheet is available and can be downloaded from ARC's website.



Above: Horizontal Party Wall DPC installed at floor level



ARC's Party Wall DPCs should be fitted with a minimum 50mm overlap with the party wall leaf either side of the party wall cavity. At 260mm wide, ARC's Party Wall DPCs will suit up to a 160mm party wall cavity.