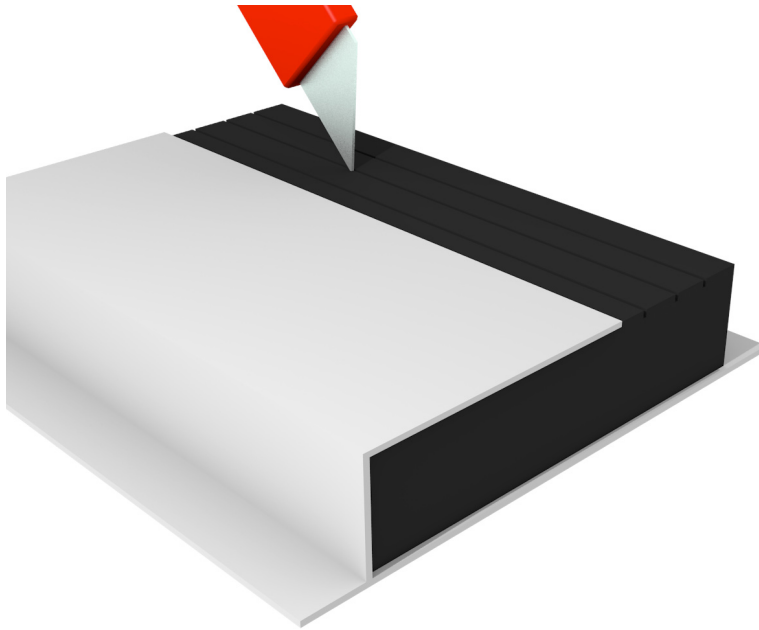




# Flexi-Closer



## Key Features

- Closes off cavities around window and door reveals
- One profile provides 5 standard cavity widths: 50, 65, 75, 85 & 100mm, simply cut to size
- Large profile available to suit 110, 125 & 150mm cavities
- Supplied in 2.4m lengths
- Prevents cold bridging



**NEXT DAY DELIVERY!**

## Description

The ARC Flexi-Closer is designed to close off the cavity around window and door reveals without the need for a return block, preventing cold bridging and eliminating moisture, mould and staining from around windows and doors. The 2.4m lengths are manufactured from a rigid PVCu profile that is insulated with graphite expanded polystyrene (EPS). The insulation is grooved to allow it to be easily cut down on site to the most common cavity sizes: 50, 65, 75, 85 or 100mm.

## Installation

ARC Flexi-Closers are easily installed. Simply cut the jamb profile to the height of the window or door opening plus 75mm to allow the bottom edges to drop into the cavity below the sill. Once the jamb sections are installed, measure the required width for the sill section and cut a length to butt tightly to the jamb sections. The sections simply push fit into the cavity once the openings are formed, and can be secured by either nailing to the block or using a suitable adhesive.

## Thermal Properties: Cold Bridging

Cold bridges are sections through the fabric of significantly lower thermal resistance than the rest of the construction. It is most commonly found around window and door openings and usually shows itself through so called pattern staining. A cold bridge through an external frame attracts moisture in the form of surface condensation which attracts dirt and dust. This surface condensation can also lead to mould growth and damage to internal plaster and paint work.

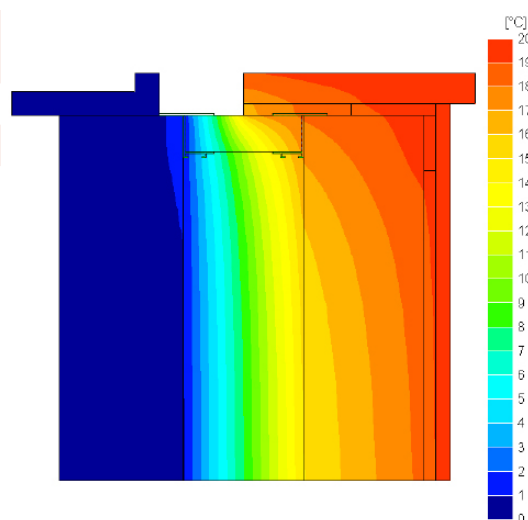
## Solution

ARC Flexi-Closers will significantly reduce the risk of cold bridging around window and door openings when fitted in accordance with the manufacturer's recommendations.

\* Up to 6 packs of Flexi-Closer when ordered before 3pm will be delivered next working day!

Detail	Default F-value	F-value with ARC Flexi-Closer	Default $\Psi$ -value	$\Psi$ -value with ARC Flexi-Closer
Jamb (100mm cavity)	0.75	0.928	0.05	0.014
Sill (100mm cavity)	0.75	0.947	0.04	0.009

As can be seen in the above table, the F-values with an ARC Flexi-Closer fitted far exceed the value of 0.75 specified in IP1/06 to avoid mould growth, and likewise the  $\Psi$ -values are well below the default values specified. ARC products have been assessed using software that complies with the Standard for Thermal Bridge Calculations BS EN ISO 10211-2007. The conventions for calculations specified in the BRE document BR497 were also followed. The results are compared with the criteria set in the BRE Information Paper IP1/06 'Assessing the Effects of Thermal Bridging at Junctions and Around Openings' which is referenced in Building Regulations.



Above: Temperature distribution illustrating heat loss at a window opening where ARC Contract-Closer is fitted.

## Standards

ARC Flexi-Closers use expanded polystyrene which conforms to BS EN 13163: 2001 Thermal Insulation Products for Buildings, Factory Made Products of Expanded Polystyrene (EPS-specification).

## Storage and Packaging

ARC Flexi-Closers are supplied in branded polythene packs which offer protection during transport as well as providing ease of identification on-site.

It is not recommended that packs are stored in direct sunlight. When storing ARC Flexi-Closers for longer periods of time, it is recommended that the product should be stored under cover.

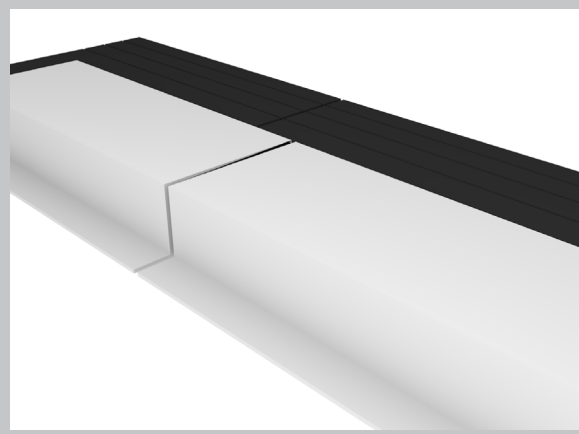
## Environment

Graphite expanded polystyrene (EPS) insulation contains no CDC or HCFCs during the manufacturing process and represents no known threat to the environment. ARC's graphite EPS has a low impact on the environment and is classified as ODP and GWP rating zero.

ARC Flexi-Closers have a Green Guide rating of A+.

## Joining Method

Where a longer length than the supplied 2.4m is required, the following joining method should be used. Using an appropriate saw, remove 150mm of the plastic profile only, then push the exposed insulation into the next length of plastic profile.

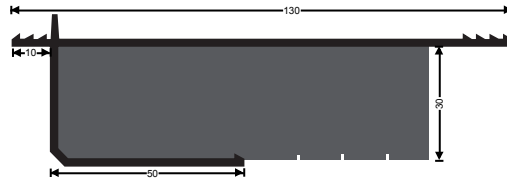


## Specifications

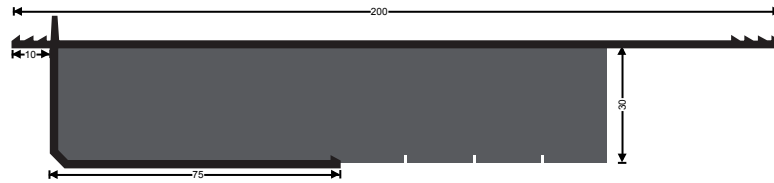
Product Code	FLEXICLOSER	FLEXICLOSER-L
Suits cavity widths	50, 65, 75, 85 & 100mm	110, 125 & 150mm
Lengths supplied	2.4m lengths, 8 per pack	2.4m lengths, 6 per pack
Packaging	Packed in polythene sleeves	Packed in polythene sleeves
Insulation	Graphite EPS (ODP and GWP rating zero)	Graphite EPS (ODP and GWP rating zero)
PVCu profile	Manufactured with rigid PVCu	Manufactured with rigid PVCu

ARC Flexi-Closers are supplied in two different variants as illustrated below.

**50, 65, 75, 85 & 100mm  
cavity widths**



**110, 125 & 150mm  
cavity widths**



## Health and Safety

ARC Building Solutions has an approved Health and Safety Policy and is committed to working and supplying products safely. We have assessed products as required by Substances Hazardous to Health Regulations (COSHH). An ARC COSHH data sheet is available and can be downloaded from ARC's website.