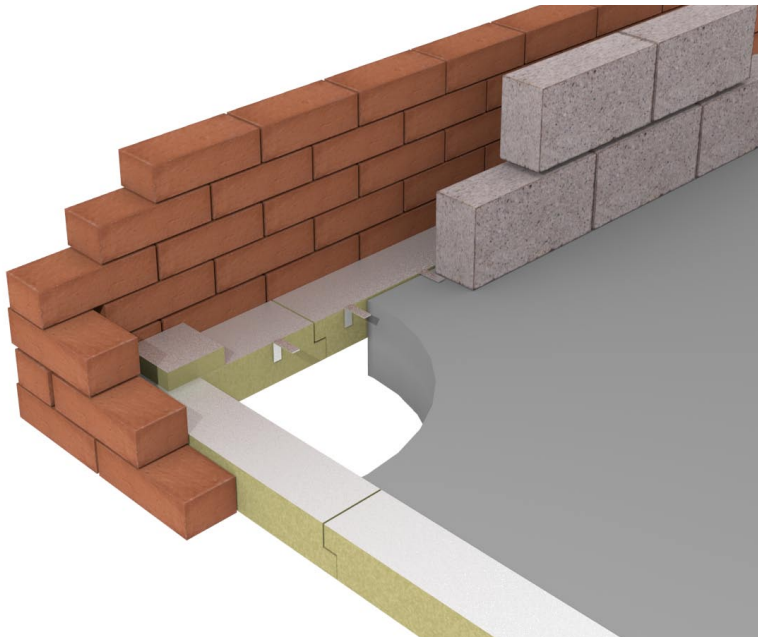




Fire Stop Slab



Key Features

- Up to 3 hours fire integrity
- Suitable for cavity widths up to 300mm
- Easily installed, either horizontally or vertically
- Can be supplied pre-cut to required cavity width



Description

The ARC Fire Stop Slab can be used to provide a fire barrier in masonry wall cavities as well as at the edge of a concrete floor slab. It is manufactured from high density foil faced rockfibre mineral wool. Two versions are available; one with a rebated jointing system providing a three hour fire integrity and one with square edges for butt jointing and providing a two hour fire integrity.

Installation

The ARC Fire Stop Slab must first be cut to the required cavity width and is then installed using fixing brackets. Two fixing brackets are required per metre. The product should ideally be friction fitted with a minimum of 5mm compression to prevent smoke leakage. Joints must be butted up as tightly as possible.

When using the rebated jointing system, the rebated joints must be fitted as tightly as possible without any gaps. At corners the slab should be butted as tightly as possible. For horizontal applications, it is recommended a corner block should be fitted over the butt joints for added protection. If the slab requires air tightness, the joints should be taped and intumescent mastic should be applied to the edges.

Fixing brackets can be supplied with the product. Two sizes are available, small brackets to suit up to a 150mm cavity, and large brackets for cavity sizes over 150mm

Dimensions

ARC Fire Stop Slabs are supplied as standard in full slab form at 1200 x 600 x 100mm. They can also be supplied pre-cut to the desired cavity width, saving time on site.

Fire Properties

ARC Fire Stop Slabs are manufactured using rockfibre mineral wool which is classified as non-combustible to BS 476: Part 4: 1970 and (1984) and Euroclass A1, Class 1 Surface Spread of Flame to BS 476: Part 7 1997 and Class 'O' to the building regulations.

ARC's Fire Stop Slab has been tested by Warrington Fire Research, achieving 2 hours fire integrity using butt joints and over 3 hours fire integrity both horizontally and vertically when using the rebated jointing system. The tests were carried out in accordance with BS 476: Part 20: 1987 Methods for Determination of the Fire Resistance of Elements of Construction (General Principles).
Warrington Fire Research certificate number: 189654

Thermal Properties

ARC's rockfibre mineral wool insulation has a thermal conductivity of 0.035W/mK.

Standards

The rockfibre mineral wool used in the manufacture of ARC Fire Stop Slab conforms to BS EN 13162 and EN16001 Energy Management Systems.

Storage and Packaging

ARC Fire Stop Slabs are supplied in polythene packs which are designed for transporting and protecting the products, or shrink wrapped on a pallet. When storing products for longer periods of time, it is recommended that the product should be stored indoors or under cover.

Environment

ARC's rockfibre mineral wool has no CFCs or HCFCs involved in the manufacturing process and represents no known threat to the environment, and is classed as zero ODP and zero GWP.

ARC Fire Stop Slab has a Green Guide rating of A+.

Health and Safety

ARC Building Solutions has an approved Health and Safety Policy and is committed to working and supplying products safely. ARC's rockfibre mineral wool is not classed as a possible human carcinogen. We have assessed products as required by Substances Hazardous to Health Regulations (COSHH). An ARC COSHH data sheet is available and can be downloaded from ARC's website.

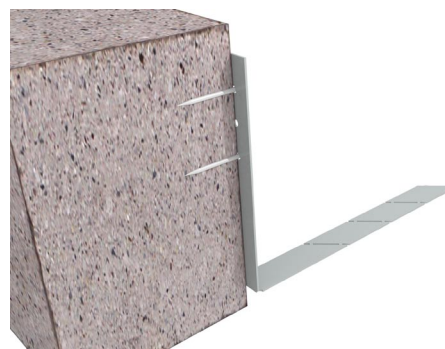
Fixing Spike Fitting Instructions



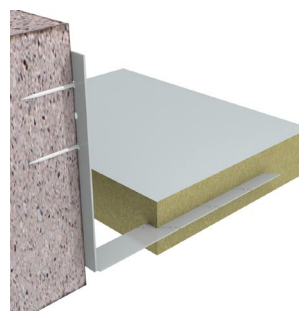
Two spikes are available: small for up to 160mm cavity and large for sizes above this.



Now bend the spike into an 'L' shape at the fold point (a small 'U' shape cutout on each side).



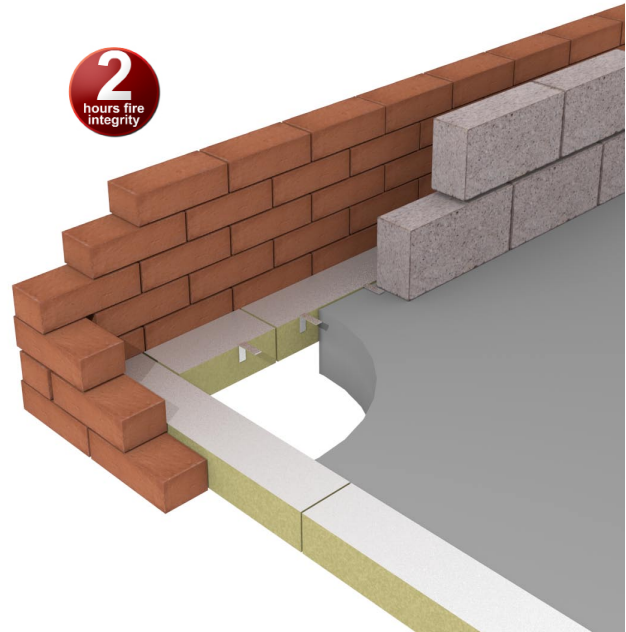
Once folded the spike can be fixed to the block. It is recommended to use at least two fixing points to ensure strength.



Now impale the insulation onto the spike as can be seen in this cross-section. Please note two spikes should be used for each piece, approx. 150mm inwards from each end.

Standard Dimensions

Product Code	Suitable for Cavity Width	Dimensions	Fire Rating
FFB50	50mm	55 x 100 x 1200mm	2 hrs
FFB60	60mm	65 x 100 x 1200mm	2 hrs
FFB70	70mm	75 x 100 x 1200mm	2 hrs
FFB80	80mm	85 x 100 x 1200mm	2 hrs
FFB90	90mm	95 x 100 x 1200mm	2 hrs
FFB100	100mm	105 x 100 x 1200mm	2 hrs
FFB110	110mm	115 x 100 x 1200mm	2 hrs
FFB120	120mm	125 x 100 x 1200mm	2 hrs
FFB130	130mm	135 x 100 x 1200mm	2 hrs
FFB140	140mm	145 x 100 x 1200mm	2 hrs
FFB150	150mm	155 x 100 x 1200mm	2 hrs
FFB160	160mm	165 x 100 x 1200mm	2 hrs
FFB170	170mm	175 x 100 x 1200mm	2 hrs
FFB180	180mm	185 x 100 x 1200mm	2 hrs
FFB190	190mm	195 x 100 x 1200mm	2 hrs
FFB200	200mm	205 x 100 x 1200mm	2 hrs
FFB210	210mm	215 x 100 x 1200mm	2 hrs
FFB220	220mm	225 x 100 x 1200mm	2 hrs
FFB230	230mm	235 x 100 x 1200mm	2 hrs
FFB240	240mm	245 x 100 x 1200mm	2 hrs
FFB250	250mm	255 x 100 x 1200mm	2 hrs
FFB260	260mm	265 x 100 x 1200mm	2 hrs
FFB270	270mm	275 x 100 x 1200mm	2 hrs
FFB280	280mm	285 x 100 x 1200mm	2 hrs
FFB290	290mm	295 x 100 x 1200mm	2 hrs
FFB300	300mm	305 x 100 x 1200mm	2 hrs



Above: Fire Stop Slab with butt joints installed against concrete floor slab