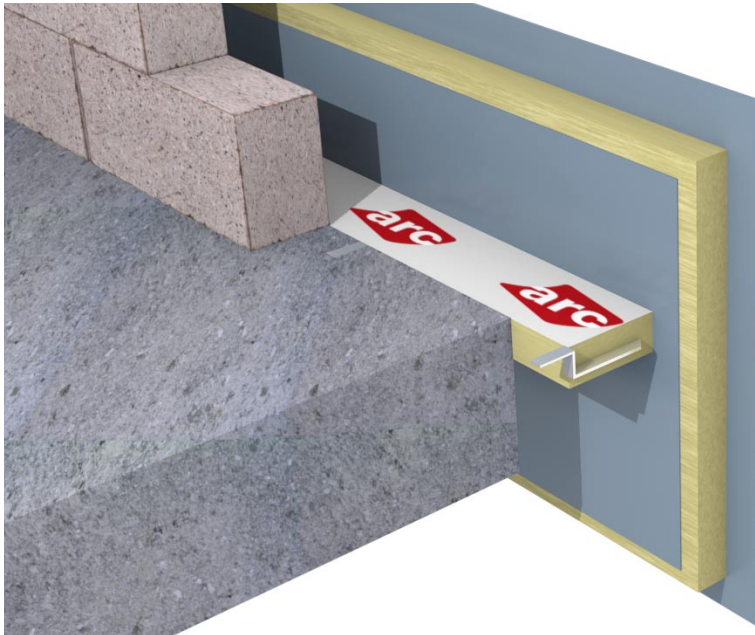




# Curtain Wall Barrier



## Key Features

- Up to three hours fire integrity
- Suitable for cavities up to 300mm
- Foil faced to provide a smoke barrier
- Cut to size on site or factory finished



## Description

The ARC Curtain Wall Barrier has been designed to provide a 3 hour smoke and fire barrier where curtain wall cladding systems are used. It seals the gap between compartment floors or walls and the external curtain wall. Manufactured from mineral wool with reinforced Class 'O' aluminium foil facing to both sides, providing an excellent resistance to smoke.

## Installation

The ARC Universal Spike (supplied with the product) is fitted to the external surface of the inner leaf. The ARC Curtain Wall Barrier is then impaled onto the spike. A compression fit is not essential but it is required to have a snug fit within the cavity space. Any site inaccuracies or deflection need to be sealed with a suitable intumescent sealer.

## Dimensions

ARC Curtain Wall Barriers are supplied as standard in full slab form at 1200 x 600 x 100mm. It can also be supplied pre-cut to the desired cavity width, saving time on site.

## Fire Properties

ARC Curtain Wall Barriers are manufactured using rockfibre mineral wool which achieves a fire classification of Euroclass A1 as defined in BS EN 13501-1.

ARC Curtain Wall Barrier has been assessed by Chiltern International Fire Research, achieving 3 hours fire integrity. Tests were carried out in accordance with BS476 Pt 20 1987, BS EN 1366-4 2006 using test method EGOLF TC2 N421 (Fire Research for Cavity Barrier).

*Chiltern International Fire Research certificate number: Chilt/IF12020*

## Thermal Properties

ARC's rockfibre mineral wool insulation has a thermal conductivity of 0.035W/mK.

## Standards

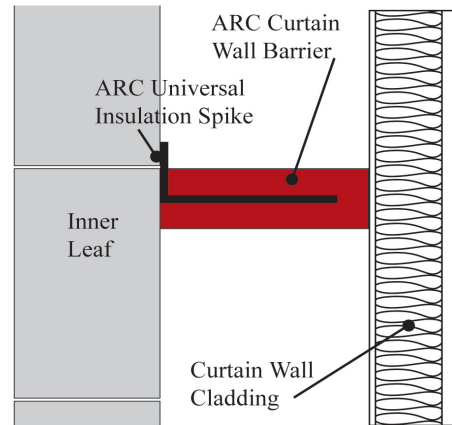
The rockfibre mineral wool used in the manufacture of ARC Curtain Wall Barrier conforms to BS EN 13162 and EN16001 Energy Management Systems. The DPC is manufactured in accordance with BS 6515.

## Storage and Packaging

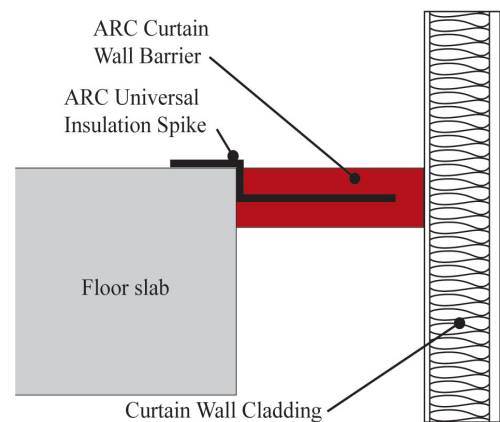
ARC Curtain Wall Barriers are supplied in polythene packs which are designed for transporting and protecting the products, or shrink wrapped on a pallet. When storing products for longer periods of time, it is recommended that the product should be stored indoors or under cover.

## Standard Dimensions

Product Code	Suitable for Cavity Width	Dimensions	Fire Rating
FFB50	50mm	55 x 100 x 1200mm	2 hrs
FFB60	60mm	65 x 100 x 1200mm	2 hrs
FFB70	70mm	75 x 100 x 1200mm	2 hrs
FFB80	80mm	85 x 100 x 1200mm	2 hrs
FFB90	90mm	95 x 100 x 1200mm	2 hrs
FFB100	100mm	105 x 100 x 1200mm	2 hrs
FFB110	110mm	115 x 100 x 1200mm	2 hrs
FFB120	120mm	125 x 100 x 1200mm	2 hrs
FFB130	130mm	135 x 100 x 1200mm	2 hrs
FFB140	140mm	145 x 100 x 1200mm	2 hrs
FFB150	150mm	155 x 100 x 1200mm	2 hrs
FFB160	160mm	165 x 100 x 1200mm	2 hrs
FFB170	170mm	175 x 100 x 1200mm	2 hrs
FFB180	180mm	185 x 100 x 1200mm	2 hrs
FFB190	190mm	195 x 100 x 1200mm	2 hrs
FFB200	200mm	205 x 100 x 1200mm	2 hrs
FFB210	210mm	215 x 100 x 1200mm	2 hrs
FFB220	220mm	225 x 100 x 1200mm	2 hrs
FFB230	230mm	235 x 100 x 1200mm	2 hrs
FFB240	240mm	245 x 100 x 1200mm	2 hrs
FFB250	250mm	255 x 100 x 1200mm	2 hrs
FFB260	260mm	265 x 100 x 1200mm	2 hrs
FFB270	270mm	275 x 100 x 1200mm	2 hrs
FFB280	280mm	285 x 100 x 1200mm	2 hrs
FFB290	290mm	295 x 100 x 1200mm	2 hrs
FFB300	300mm	305 x 100 x 1200mm	2 hrs



Above: Curtain Wall Barrier fitted against inner leaf



Above: ARC Curtain Wall Barrier fitted on top of floor slab

## Environment

ARC's rockfibre mineral wool has no CFCs or HCFCs involved in the manufacturing process and represents no known threat to the environment, and is classed as zero ODP and zero GWP.

ARC Curtain Wall Barriers have a Green Guide rating of A+.

## Health and Safety

ARC Building Solutions has an approved Health and Safety Policy and is committed to working and supplying products safely. ARC's rockfibre mineral wool is not classed as a possible human carcinogen. We have assessed products as required by Substances Hazardous to Health Regulations (COSHH). An ARC COSHH data sheet is available and can be downloaded from ARC's website.

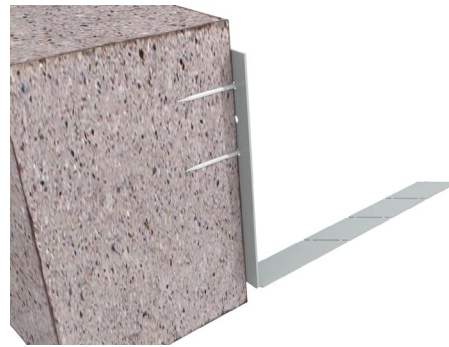
### Fixing Spike Fitting Instructions



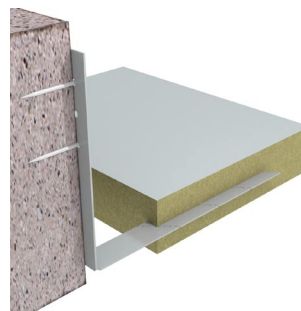
Two spikes are available: small for up to 160mm cavity and large for sizes above this.



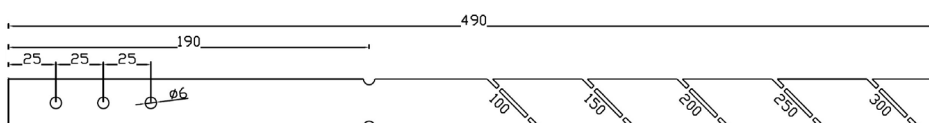
Now bend the spike into an 'L' shape at the fold point ( a small 'U' shape cutout on each side).



Once folded the spike can be fixed to the block. It is recommended to use at least two fixing points to ensure strength.



Now impale the insulation onto the spike as can be seen in this cross-section. Please note two spikes should be used for each piece, approx. 150mm inwards from each end.



Above: ARC Universal Spike