

Farringdon Catalyst Eco

ADDITIONAL INFORMATION

FOR UK & EU only

EN13240:2011 +A2:2004



PLEASE RETAIN THIS GUIDE FOR FUTURE REFERENCE

**PLEASE USE THESE INSTRUCTIONS INCONJUNCTION
WITH BK685 FOR FUTURE REFERENCE**

UK & EU Customers Only

Congratulations on your choice of an Arada stove.

More than 30 years of experience has been put into the development of your stove to ensure ultimate performance and years of trouble free use and enjoyment. Every detail of your stove has been carefully designed and engineered which is why we are so confident in the reliability of our products.

Your Arada stove is built to the highest standard of craftsmanship using the best materials and the most modern equipment available. It is a highly efficient and sophisticated piece of machinery and when properly installed and operated it should provide a lifetime of heating satisfaction.

Should you have any questions about your stove which are not covered by this manual, please contact the Arada retailer in your area, call our technical support department on +44 (0)1297 632052 or visit our website www.aradastoves.com which offers a wealth of information on how to care for, and get the best from your stove.

Please ensure that you read these instructions in full and understand them before operating your stove.

Arada has a policy of continuous product development and therefore we reserve the right to amend specifications without prior notice. Due to printing cycles, items or options may be described before they are generally available or after they have ceased. Please check with your retailer or dealer if you are unsure about any aspect of your stove, its installation or correct use.

PLEASE NOTE— *Arada has a policy of continuous product development and therefore we reserve the right to amend the specification without prior notice. Due to printing cycles, items or options may be described before they are generally available or after they have ceased, so please check with your retailer or dealer.*



WARNING

It is a LEGAL REQUIREMENT that the installation of all new or replacement, wood or solid fuel heating appliance, obtain building control approval from your local authority or the installation work must be carried out through a government approved competent persons scheme. A list of all competent person schemes can be found :
<https://www.gov.uk/guidance/competent-person-scheme-current-schemes-and-how-schemes-are-authorized>

Any manufacturer's instructions must not be taken as overriding statutory requirements.

All Arada Farringdon stoves MUST NOT be connected to a shared flue system.

Please Note: Classification of these appliances is for intermittent use only.

Do not use aerosol sprays or any other flammable materials near the appliance when in use.

Do not use the appliance as an incinerator.

Use only recommended fuels, STRICTLY NO unsuitable and non recommended fuels or materials or liquid fuels allowed.

Pure petroleum coke or Bituminous house coal must NOT be burned in this appliance. The use of these fuels will invalidate the appliance guarantee.

Please ensure that the air inlet vent grills to the dwelling are not obstructed or liable to be blocked.

Caution must be exercised during operation of the appliance as both internal and external surfaces will be hot to touch, use the stove mitten provided when the appliance is in operation.

A fireguard conforming to BS 8423:2002 should be used in the presence of children or elderly people.

Always observe the distances to combustible materials as stated on the appliance data plate and in the technical data section of this manual. Ensure no soft furnishings or combustible materials are susceptible to heat radiating from the appliance.

Under NO circumstances should the stove be operated for extended periods with the main fire door open. This will result in an over firing situation and will lead to severe damage to the stove and flue system.

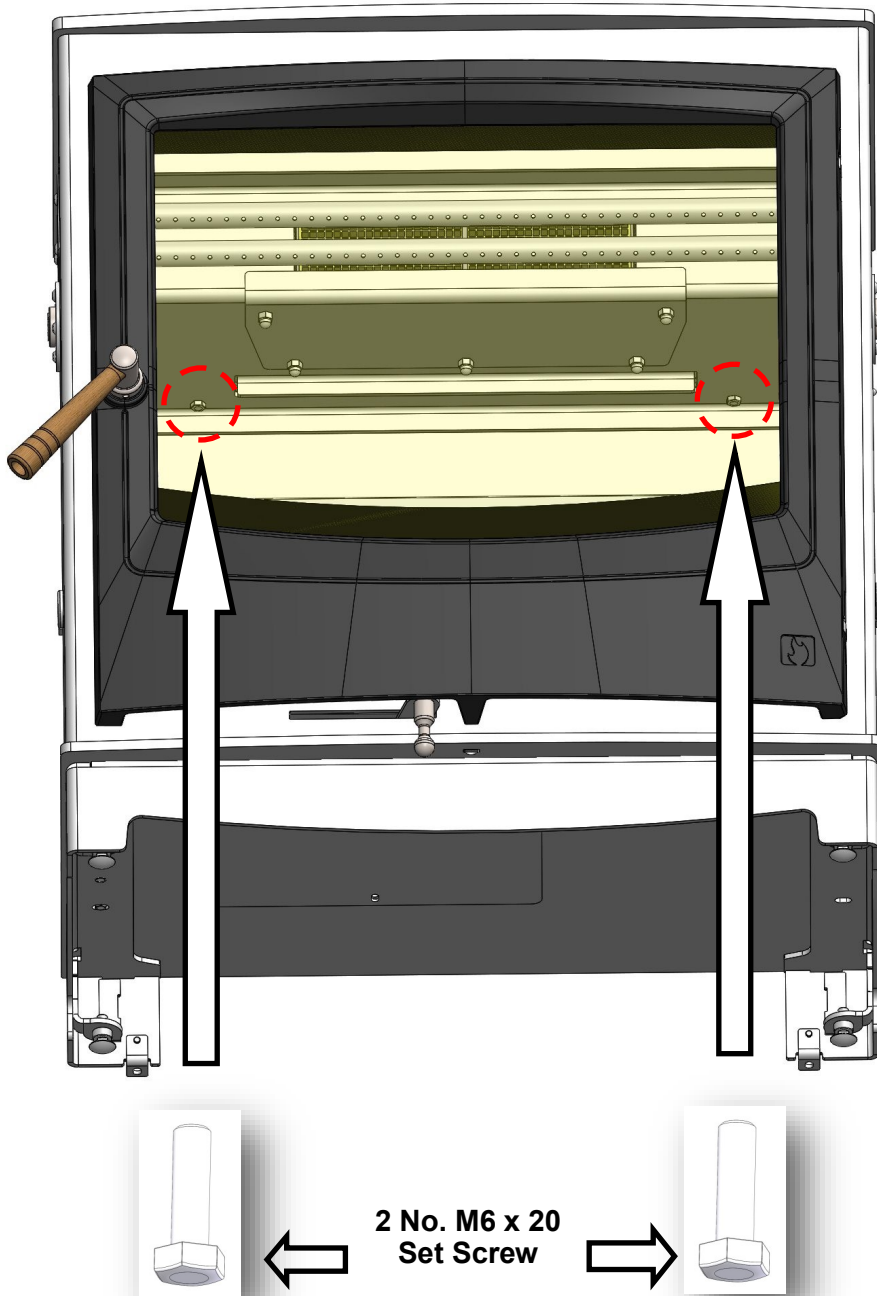
Ignoring the warnings could lead to damage/injury to persons and/or property.

Arada Ltd will not be responsible for any consequential or incidental loss or injury however caused.



IMPORTANT INSTALLATION INSTRUCTIONS UK & EU Only

NOTE : PICTURE SHOWS THROAT PLATE & INSULATION BLANKET REMOVED



NOTE : Applicable To UK & EU INSTALLATION ONLY.

To comply with the European standards (EN 13240:2011 +A2:2004), the 2 No. M6x20 set screws must be fully inserted into the threaded holes, in the positions shown above.

NOTE : Please remove the throat plate & insulation blanket, for access to the fixing holes. Replace these components after fitting.

Information for UK related installation only -

Smoke control areas (The Clean Air Act 1993 & Smoke Control Areas)

Under the Clean Air Act local authorities may declare the whole or part of the district of the authority to be a smoke control area. It is an offence to emit smoke from a chimney of a building, from a furnace or from any fixed boiler if located in a designated smoke control area. It is also an offence to acquire an “unauthorised fuel” for use within a smoke control area unless it is used in an “exempt” appliance (“exempted” from the controls which generally apply in the smoke control area).

In England appliances are exempted by publication on a list by the Secretary of State in accordance with changes made to section 20 and 21 of the *Clean Air Act 1993* by section 15 of the Deregulation Act 2015. In Scotland appliances are exempted by publication on a list by Scottish Ministers under section 50 of the Regulatory Reform (Scotland) Act 2014.

Similarly in Northern Ireland appliances are exempted by publication on a list by the Department of Agriculture, Environment and Rural Affairs under Section 16 of the Environmental Better Regulation Act (Northern Ireland) 2016. In Wales appliances are exempted by regulations made by Welsh Ministers.

Your local authority is responsible for implementing the Clean Air Act 1993 including designation and supervision of smoke control areas and you can contact them for details of Clean Air Act requirements.

Further information on the requirements of the Clean Air Act can be found here : <https://www.gov.uk/smoke-control-area-rules>

The following list of Farringdon models :

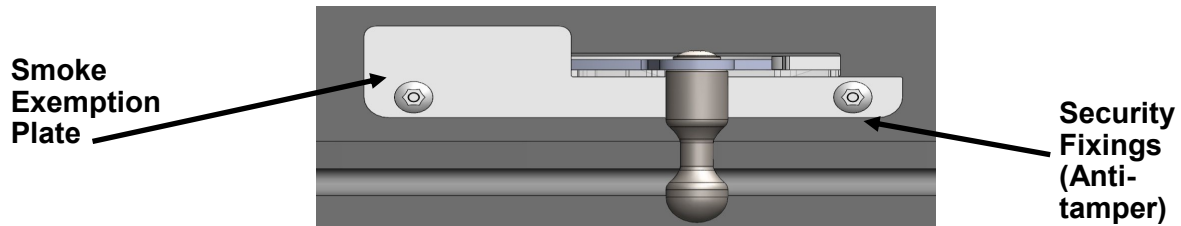
- Farringdon Catalyst Eco stove

are currently exempt or have been recommended as suitable for use in smoke control areas, when burning wood logs and when fitted with a factory set mechanical stop, to prevent secondary air closure beyond the 30mm open position.

Information for UK related installation only—Smoke Control Areas

The minimum air control setting is governed in manufacture to meet the requirements of Smoke Control exemption and as a result the appliance will **NOT** shut down completely when in the minimum air position setting.

Removal or modification of the factory fitted air control plate (See below) is illegal when the appliance is installed in a smoke exemption area and doing so may result in prosecution and fine.



Factory Fitted Smoke Exemption Plate

Refuelling on to a low fire

bed

If there is insufficient burning material in the fire bed to light a new fuel charge, excessive smoke emission can occur. Refuelling must be carried out onto a sufficient quantity of glowing embers and ash that the new fuel charge will ignite in a reasonable period. If there are too few embers in the fire bed, add suitable kindling for ignition to prevent excessive smoke.

Important notes on usage, to meet the requirements of Smoke Control exemption -

- Always recharge onto hot embers.
- After re-charging, fully open both the primary and secondary air controls for the following times, in order to establish good combustion -
Farrington Catalyst Eco —5 minutes together with fire door ajar
- Do not leave the appliance unattended until flames are well established.
- Periodic burning out of the fuel bed at high output to combust any remaining charcoal.

Fuel overloading

The maximum amount of fuel specified in this manual should not be exceeded, overloading can cause excess smoke. Please see technical data section in this manual.

Operation with door left open

Operation with the door open can cause excess smoke. The appliance **MUST NOT** be operated with the appliance door left open except as directed in the instructions.

Dampers / Air controls left open

Operation with the air controls or appliance dampers open can cause excess smoke. The appliance must not be operated with the air controls, appliance damper or door(s) left open except as directed in these instructions.

Catalyst

The Arada Farrington 16 / Catalyst Eco stove is fitted with a ceramic catalyst to aid clean burning.

The catalyst should be inspected for damage annually and if necessary replaced. The catalyst part number can be found in the parts list on page 11.

**Only replace with a genuine Arada Catalyst
(Details within instructions BK685 on page 22)**

Catalyst Bypass Control.

The control for the catalyst bypass is on the left and right side of the stove in the position shown in Fig A.

Actuation is as shown on the label on the right hand side. The bypass should be placed in the open position during the lighting stage and prior to opening the door for re-fuelling.

The Catalyst will be active when the thermometer indicates 300°C or above, the bypass door should then be closed. The stove should be run with sufficient combustion air to maintain a temperature above this level to ensure proper catalyst function. During re-fuelling or initial lighting the bypass should remain open until the minimum light-off temperature of 300°C is reached/re-established.

The door/riddling tool is used to control the bypass by insertion into the tri-lobed boss.

Always run the stove with the bypass door closed during normal burning phase.

See Fig C & D for cutaway image of bypass actuation

Stove thermometer

The stove thermometer indicates when the stove is at the correct temperature to close the by-pass door for normal running, and re-open for re-fuelling and/or lighting, See Fig B



Fig B

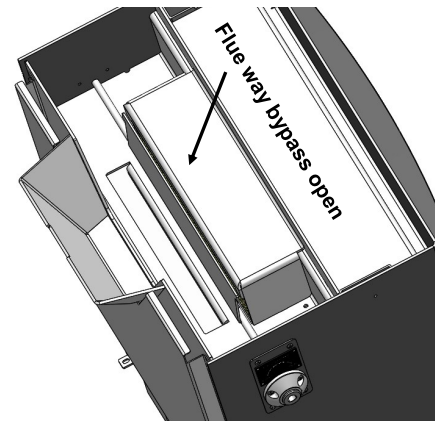


Fig C

Open Position (Cat bypassed)

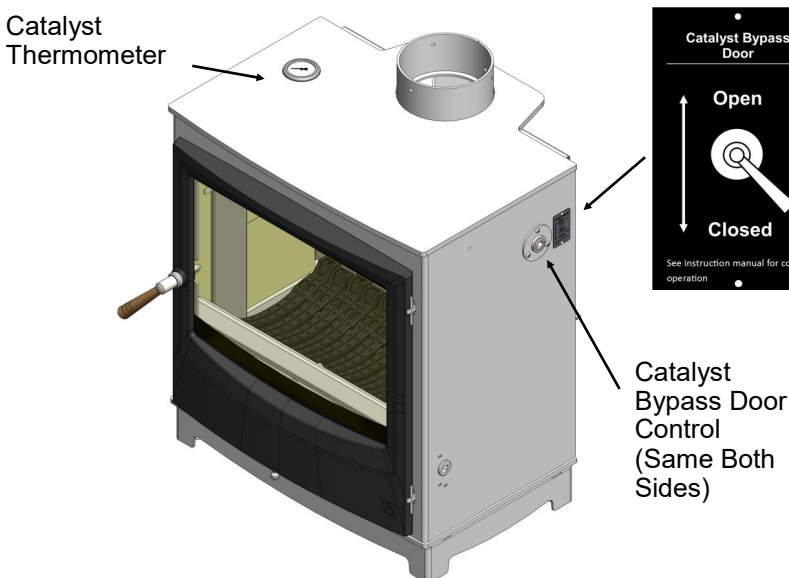


Fig A

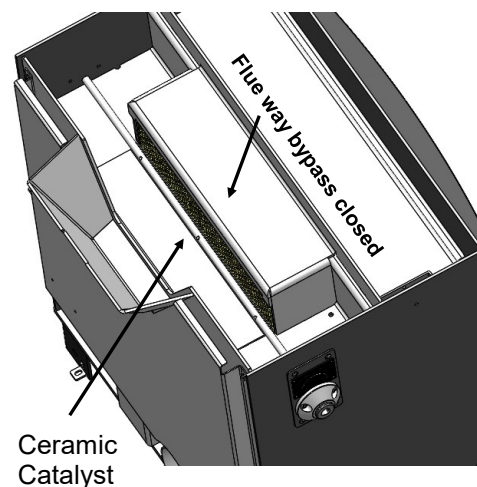


Fig D

Closed Position

Guarantee (Applicable To UK & Europe Only)

When you buy an Arada stove, you are not only buying a first class appliance, you are receiving a commitment from us to look after you and your appliance.

If any part of the main body of the stove fails due to a manufacturing or material defect during the guarantee period that applies in respect of the relevant stove (as set out below), Arada will, at its sole discretion, repair or replace your Arada stove, for no charge.

For the purposes of this guarantee, a material or manufacturing defect includes the splitting or cracking of the main body (defined as the steel outer casing and items fixed immovably to the casing).

Damage caused by over-firing or over-heating is not covered (as described in the operation manual). Warping and a red-oxide colouring will demonstrate the over-heating of internal parts; body paint which has turned dusty white is also indicative of such use.

The following guarantee periods shall apply in respect of the following Arada stoves:

Arada stoves come with a lifetime guarantee to the main body.

The external paint finish carries a one-year guarantee only.

Catalyst element (CAT FAR1601) has a limited 5 year warranty against thermal degradation and disintegration.

This guarantee is subject to the Terms and Conditions set out below.

Terms and Conditions

The following terms and conditions must be satisfied in order for your stove to be covered by the guarantee set out above:

1. Your stove must have been purchased from an officially approved Arada dealer.
2. You must be the original purchaser of the stove in order to make a claim. This guarantee is not valid in relation to any claims made by someone who did not originally purchase the stove from Arada or an approved Arada dealer.
3. Any claim under this guarantee must be made through the approved Arada dealer where the stove was purchased and accompanied by proof of purchase (e.g. a valid receipt). Stoves not purchased from an approved Arada dealer will not be covered by this guarantee.
4. Your stove must be installed in the UK for this guarantee to be valid. Stoves installed outside of the UK will not be covered by this guarantee.
5. Your stove must have been installed by a suitably qualified person and in accordance with the manufacturer's installation instructions. Stoves not installed by a suitably qualified person or not installed in accordance with the manufacturer's installation instructions will not be covered by this guarantee.

6. Any claims under this guarantee shall not be valid where the installation of the stove does not conform to all required building regulations and other legislation in force at the time of purchase and where flue draw readings have not been made to confirm a suitability of the flue.

The manufacturer's decision as to whether this condition has been satisfied shall be final.

7. The guarantee does not cover damage caused to the stove through careless handling or misuse or neglect of the appliance (misuse and neglect being not following the manufacturer's instructions and user guides in relation to the stoves, including the use of non-recommended fuels).

8. The following consumable service items are not covered by this guarantee:

- Firebox linings
- Grate bars
- Fuel retainer
- Throat plate
- Gaskets
- Door glass
- Seals

9. The guarantee does not cover damage caused by storing or using the stove in a damp environment, defects or faults caused by local conditions such as draught problems and chimney defects or corrosion caused by condensation, damp or water ingress into the flue, chimney or the surrounding of the stove.

10. The guarantee is only valid if the stove is serviced and checked annually by a suitably qualified heating engineer, with documentation to be retained and produced in the event of a claim being made.

11. The guarantee is only valid where any spare parts used are supplied by Arada or an approved Arada dealer. The use of spares other than those supplied by Arada Limited shall invalidate the guarantee. Parts can be purchased through an approved dealer or directly from Arada, online at www.aradastoveandspares.com.

12. The guarantee is not valid where any repairs or modifications have been made to the stove which have been carried out by anyone other than Arada or its authorised representatives or approved dealers.

13. All guarantee periods commence on the date of purchase and are non-transferable and solely for the benefit of the original purchaser of the stove.

General

Our guarantee is offered as an addition to your statutory rights and will not effect your statutory rights. You can obtain information about your legal rights from trading standards office's or a citizens' advice bureau.

If you believe your appliance is not working correctly or it has broken down, in the first instance please contact your local retailer or installer for assistance.

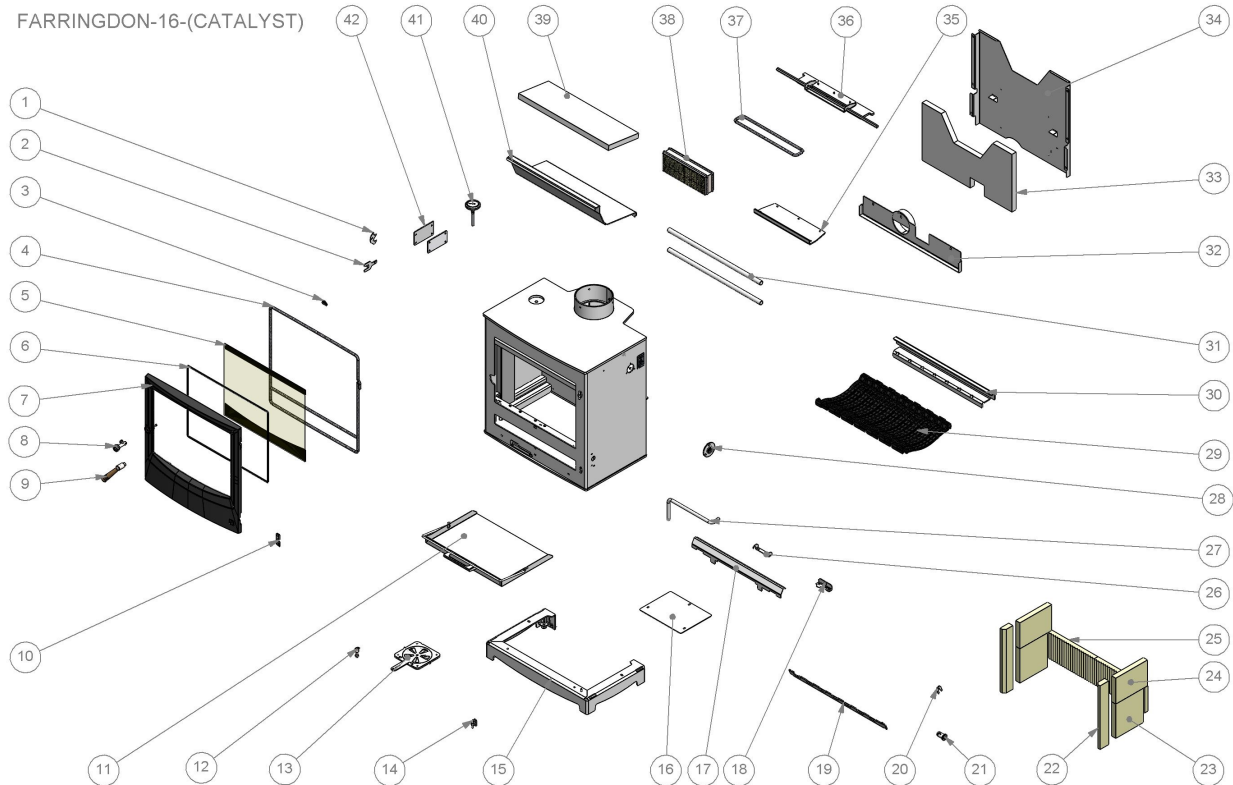
This guarantee is applicable in the UK only and operates exclusively in accordance with the laws of England and Wales.

TECHNICAL DATA UK & EU Only

TECHNICAL DATA	Farrington Catalyst Eco
Maximum / Nominal Heat Output Kw	11.4
Mean Flue Gas Temperature °C	279
Height mm/inch	659/26
Width mm/inch	533/21
Depth mm/inch (handle removed)	330/13
Flue Diameter mm/inch	152/6
Weight Packed Kg/lbs	185/408
Weight Nett Kg/lbs	172/379
Maximum Log Length inch (mm)	12/300
Maximum Log Diameter inch (mm)	4/102
Fuel	Beech Wood
Efficiency Nett (%)	82.4
Mean Co Emission @ 13% O2 (%)	0.12
Flue Mass Gas Flow (g/s)	7.5
Typical Fuel Load To Achieve Nominal Rated Output Per Hour (Kwh/Kg)	2.39
Mean CH Emission @ 13% O2 (%)	91
Mean NOx Emission @ 13% O2 (%)	92
DIN Plus Particulates @ 13% O2 (%)	24

SPARE PARTS LIST UK & EU Only

FARRINGDON-16-(CATALYST)



No.	Description	Part Number	No.	Description	Part Number
1	Airwash Tube Clamp	AFS3655	24	Liner 196x135x25	AFS4460
2	Liner Fastener	AFS4452	25	Liner 300x132x25 Fluted	AFS4458
3	Glass Clips	AFS1010	26	Pilot Tube Clamp	AFS3720
4	Rope Kit	ARA019	27	Pilot Tube	AFS4462
5	Glass Kit	AFS4130	28	Gland Plate & Bypass Lever	AFS4463
6	Gasket & Glass Clips	AFS1361	29	Flexi Grate Bar Medium	AFS2025
7	Complete Fire Door	AFS4453-(xxxx)	30	Grate Bar Support	AFS4465
8	Handle Boss	AFS4475	31	Air Wash Tube	AFS4471
9	Handle Assembly	AFS4476	32	Direct Air Adaptor	AFS4466-(xxxx)
10	Hinge Catch Plate	AFS3865	33	Heatshield Insulation	AFS4467
11	Ash Pan	AFS4454	34	Heatshield	AFS4468
12	Control Knob	AFS3860	35	Catalyst Door	AFS4469
13	Air Slider Assembly	AFS4190	36	Bypass Damper Assembly	AFS4470
14	Body Hinge	AFS3690	37	Bypass Door Rope (Rope Kit 3)	ARA019
15	Farringdon Feet	AFS4455-(xxxx)	38	Catalyst Farringdon 16	CatFAR16.01
16	Base Air Cover	AFS4185	39	Throat Plate Insulation	AFS4472
17	Fuel Retainer	AFS4456-(xxxx)	40	Throat Plate	AFS4473
18	Pilot Tube End Bracket	AFS3725	41	Catalytic Thermometer	AFS4464
19	Comb	AFS4457	42	Access Hatch & Seal	AFS4474-(xxxx)
20	Comb Lock	AFS3855			
21	Comb Extension	AFS4005			
22	Liner 330x52x25	AFS4459			
23	Liner 178x167x25	AFS4461			

Note : (xxxx) Denotes Colour Option

**Please Refer To
www.aradastovesandspares.com**

ARADA

— DEVON —

All Arada Stoves are manufactured in the UK

Arada Ltd

The Fireworks,
Weycroft Avenue - Axminster - Devon
EX13 5HU
United Kingdom

www.aradastoves.com

T: +44 (0)1297 632050

Email : info@aradastoves.com