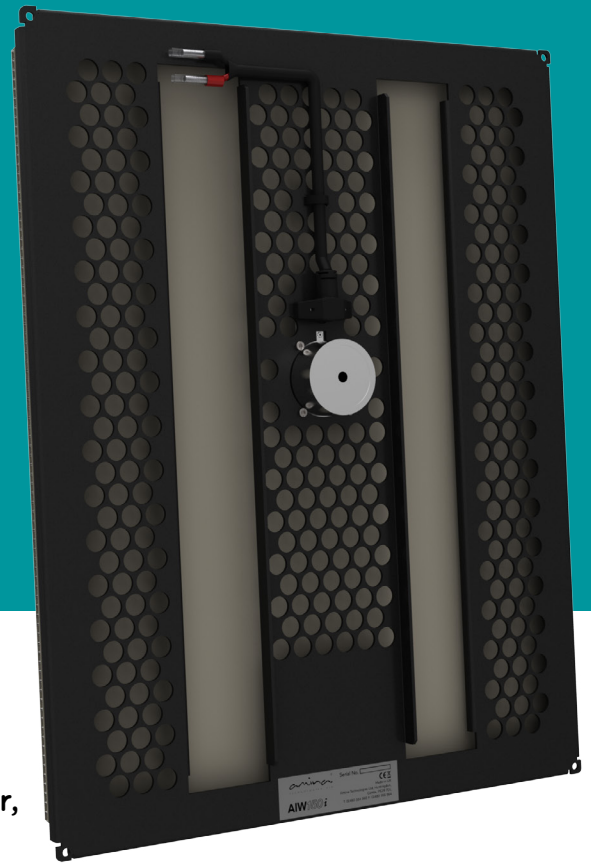


EVOLUTION SERIES AIW150i

High Performance
Invisible Loudspeaker
Product Data Sheet



- **Completely invisible, high fidelity loudspeaker**
- **Easy to install into cavity walls, solid walls or ceilings**
- **Simply skim over with a finishing coat of plaster, wood or wood veneer**
- **Suitable for low powered audio systems**
- **Features new technologies providing smooth frequency response and enhanced clarity**

The AIW150i Evolution Series loudspeaker takes invisible loudspeakers to a whole new territory with respect to sound quality. Easy to install and rendered invisible behind a 2mm skim of plaster or other materials such as wood, wood veneer or leather. It is the perfect solution for aesthetically sensitive applications.

- **OptiDaming technology** delivers **increased low frequency extension and improved mid-range accuracy** by selectively tuning discrete vibrational modes that are generated in the loudspeaker's acoustical panel.

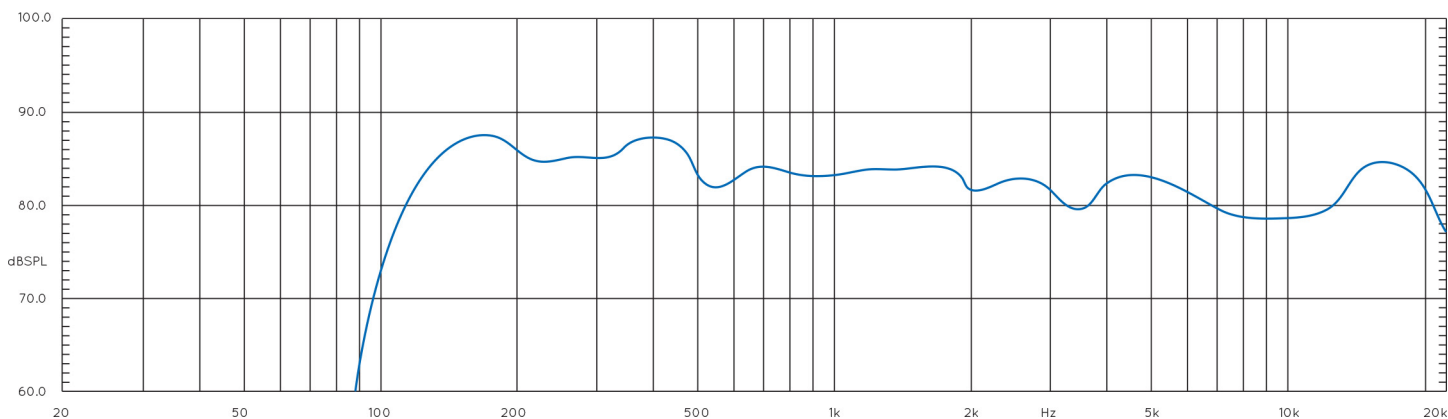
Specifications

AIW150i

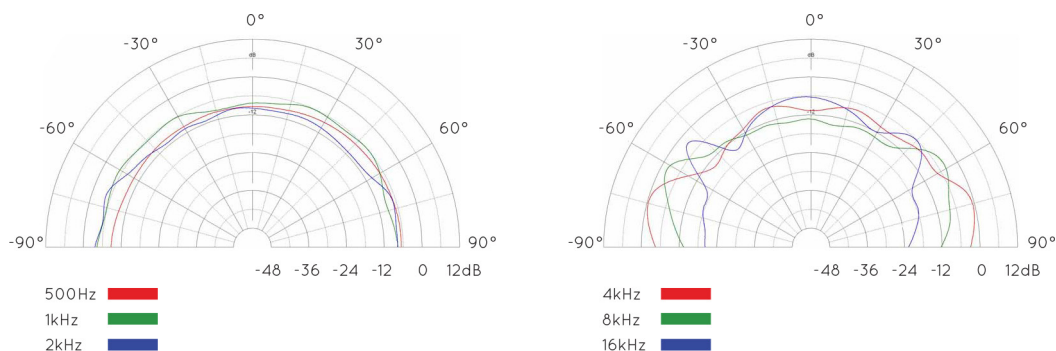
Nominal impedance	8 Ohms (APU150 connected)
Power handling (continuous/ peak)	15W/ 30W
Sensitivity (2mm plaster/ mud skim)	83dB 1m/ 2.83Vrms (APU150 connected)
Frequency response	105Hz - 20kHz (-6db) mounted in Backbox CV345 (APU150 connected)
Electrical connection	Blue butt splice crimp terminals (14-16 AWG)
Dimensions	450mm x 345mm x 40mm (17 ^{3/4} " x 13 ^{5/8} " x 1 ^{5/8} ")
Product weight	1.10Kg (2.43lbs)
Fixing requirements	Amina BackboxCV345 / BackboxSW345 (Wood adhesive and fixing blocks available on request)
In-line protection unit	APU150 or APURS/ 8E
Manufacturer limited warranty for residential applications	10 years

On Axis Frequency Response

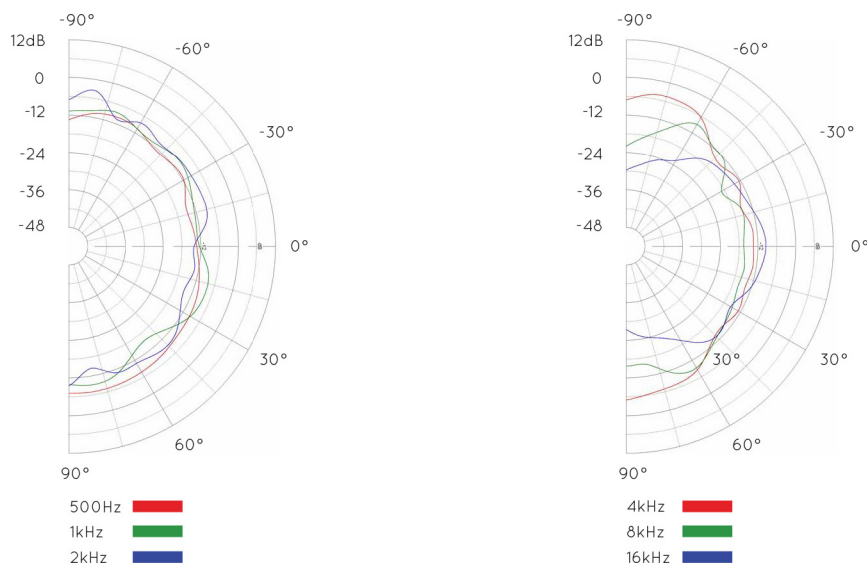
Product installed using Amina BackboxCV345 in 12.5mm (1/2") plasterboard with 400mm (16") stud spacing and 2mm thick plaster skim coat applied



Horizontal Dispersion



Vertical Dispersion



International

Amina Technologies Ltd
 Cirrus House, Glebe Road, Huntingdon
 Cambridgeshire, PE29 7DL, UK
 T: +44 (0)1480 354390
 E: inspired@amina.co.uk
 W: www.aminaco.uk
 V 1.0 January 2015 © Amina Technologies Ltd



US

Amina Technologies Ltd
 P: 1-866 462 6462
 F: 1-888-329 2491
 E: sales@aminatechnologies.com
 W: www.aminaco.uk