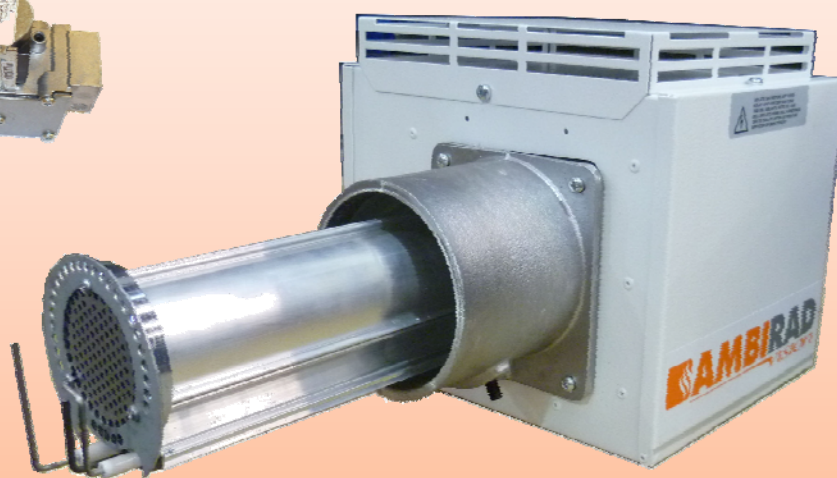
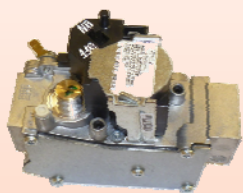


VISION RANGE SIT SIGMA TO WHITE RODGERS GAS VALVE CHANGE



INDEX

Section

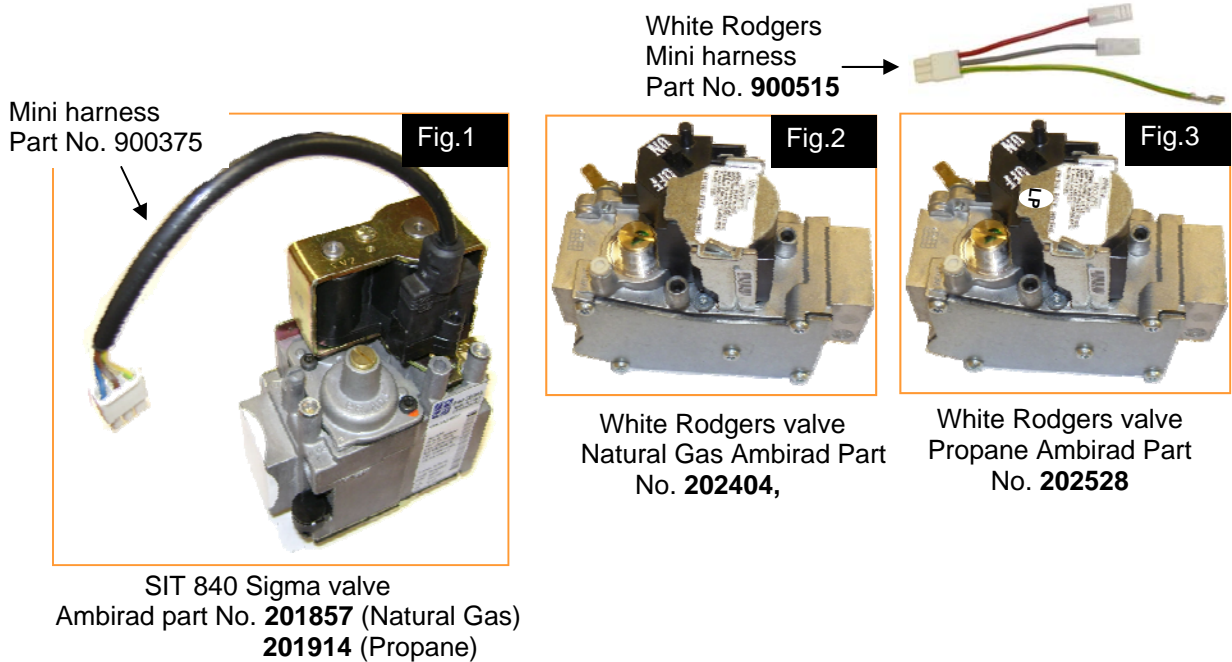
General Information-----	1
Adjustment -----	2

WARNINGS

AmbiRad equipment must be installed and maintained in accordance with the relevant provisions of the Gas Safety (Installations and Use) Regulations 1998 for gas fired products. Due account should also be taken of any obligations arising from the Health and Safety at Works Act 1974 or relevant codes of practice. In addition the installation must be carried out in accordance with the current IEE wiring regulations (BS 7671), BS 6896:2005 (Industrial & Commercial) and any other relevant British Standards and Codes of Practice by a qualified installer. All external wiring **MUST** comply with the current IEE wiring regulations.

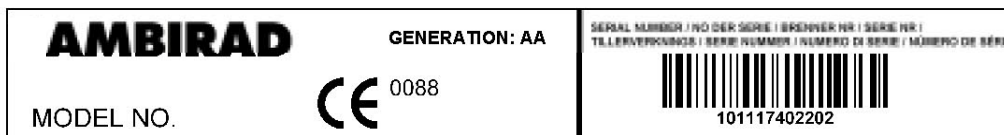
1. General Information.

Due to ongoing improvements, the gas valves fitted to the Vision range of radiant heaters are being changed from the current SIT valve (Fig.1), to the new White Rodgers valve (Figs.2 and 3). The new valves are suitable for Natural gas and Propane gas types.




Burners fitted with the White Rodgers valve will be labelled with a generation code so that the valve can be identified for spares purposes.

Example burner label showing generation code for White Rodgers valve is shown below:



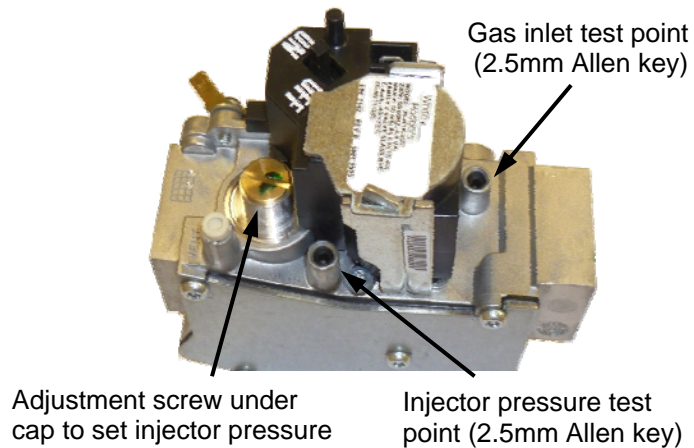
Propane gas valve label Natural gas valve label



 **Note:** The White Rodgers valve cannot be used as a replacement for the SIT valve.

2. Adjustment.

Gas Valve adjustment



If you have any queries on the contents of this bulletin, please use the contact details listed on the back page.

AMBIRAD

HEATING AND VENTILATION SOLUTIONS

AMBIRAD AIRBLOC NORDAIRNICHE BENSON

Technical Support:

Tel: **01384 489 200**

Fax: **01384 489 707**

ambiradsales@nordyne.com
www.ambiradgroup.co.uk

AmbiRad UK is a registered trademark of AmbiRad Limited. Because of continuous product innovation, AmbiRad reserves the right to change product specification without due notice.