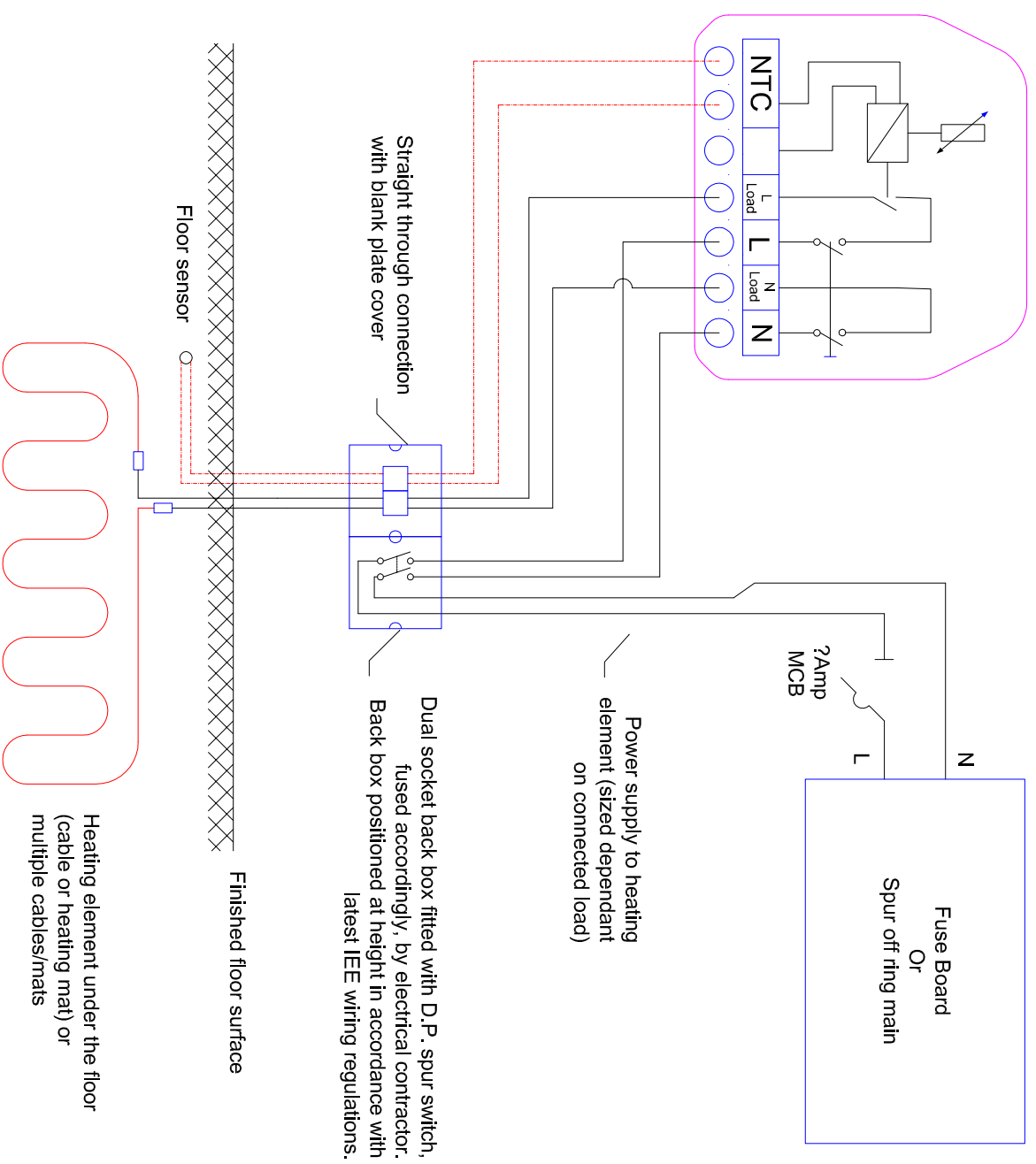


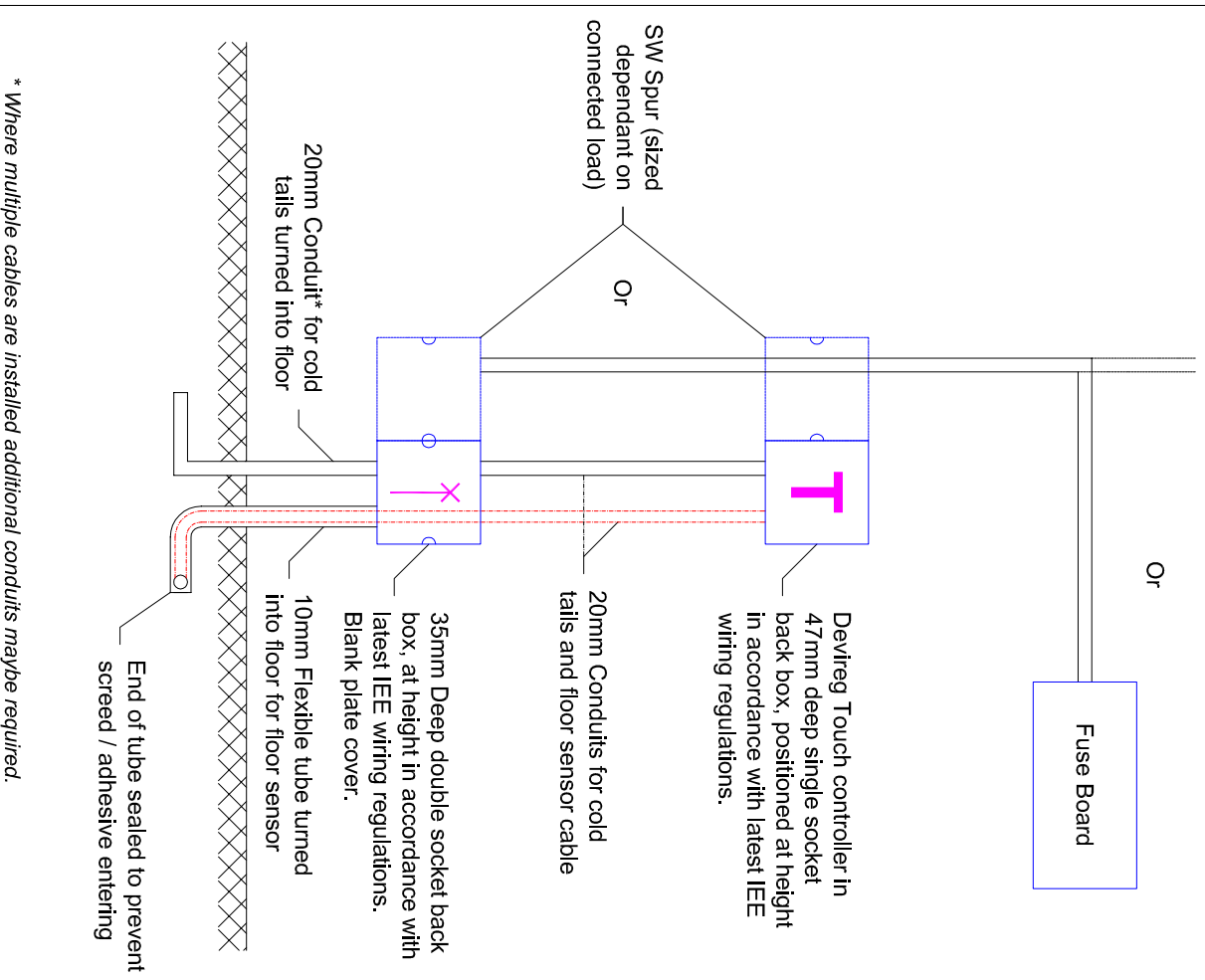
### Schematic:

Devireg Touch controller in 47mm deep single socket back box, positioned at height in accordance with latest IEE wiring regulations.



### Diagram:

Spur off ring main



Gaia Climate Solutions Ltd.  
Unit 4, Brickfields Business Park,  
Woodlebury, St. Edmunds Suffolk IP30 9DS  
Tel: 0845 424 9991  
www.gaiaest.com

SITE -  
CLIENT -

TITLE devireg Touch Wiring Diagram  
Circuits Under 3500W

DRAWN SFG DATE 19.06.12 SCALE N/A

DATE INSTALLED BY DRG No. GAIA\_W009



- IMPORTANT NOTES:**
- All DEVI heating systems require standard UK supply voltage of 230V/240v. Estimated Amps based on 230v.
  - All electrical connections must be made by a qualified electrician, in accordance with the current wiring regs.
  - Electrical contractor to ensure that: supply cables, fused spurs, overcurrent protective devices and RCD's are adequately sized, in accordance with heating loads.
  - 30mA RCD protection is required for all wet rooms (Note: DEVI controls located outside of these rooms).
  - Refer to signed DEVI test sheets, for confirmation of heating element continuity & insulation/resistances readings taken before and after DEVI installation.
  - Please avoid all forms of floor fixings within the rooms with DEVI underfloor heating installed, as indicated.