



altro

## installation guidance

### Altro Marine™ 20 shower installations

AUGUST 2005

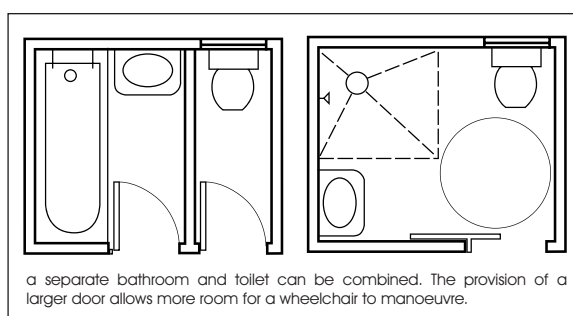
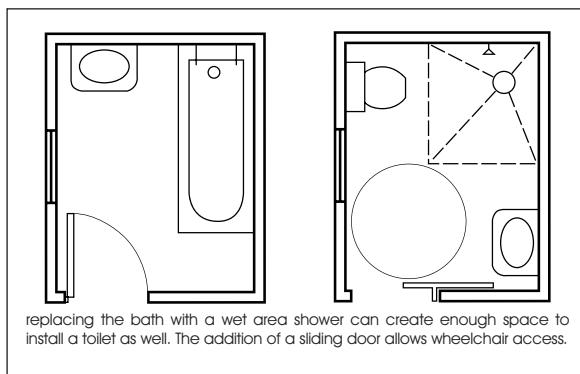
This data sheet sets out some of the methods to achieve an hygienic, slip resistant shower installation using Altro Marine 20 safety flooring, an ergonomically designed, specially textured 2.0mm sheet vinyl flooring, which helps provide a sure footing in wet, bare-foot areas. Altro Marine 20, in common with the entire Altro safety flooring range, contains an integral bacteriostat and has a seven year product warranty.

The Altro shower system is a combination of slip resistant flooring, installed using a suitable water resistant adhesive with all joints hot welded, sealed to the wall finish in an appropriate manner and a drain outlet into which the flooring is clamped, creating a waterproof installation.

#### Wet area/level access showers

For use by the elderly or disabled and for communal showers in sports clubs, schools etc.

- No step to negotiate, allowing complete accessibility for wheelchairs with non-staining rubber tyres
- Space saving
- Hygienic and easy to clean
- Aesthetically pleasing - similar flooring can be used throughout the room



#### Shower trays

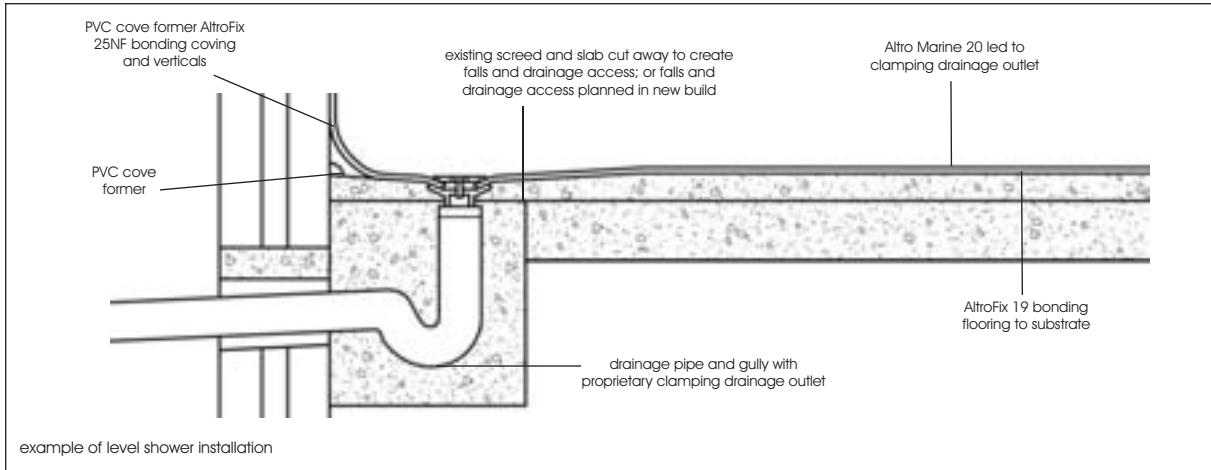
For workplace showers, showers in hostels etc.

- Can be built to required size or shape to fit available space
- Hygienic
- Attractive - the finish is continued over the side of the tray to the floor, with a similar flooring used throughout the room, if required

#### Installation

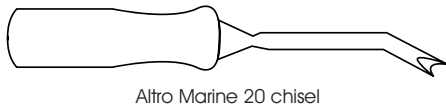
##### Subfloor

1. Both shower types can be installed over a variety of subfloors, including timber, sand and cement screeds and concrete screeds. The subfloor should include an effective damp proof membrane if on the ground floor. Timber subfloors at ground level should be adequately ventilated.
2. New screeds and cementitious subfloors should be laid to BS 8204: 2001. Sufficient drying out time should be allowed before installation of the flooring material.
3. Falls to the drain outlet should be created during subfloor preparation and the drain outlet set at the correct level at this time by the plumber or installer.



## Floor finish

1. Altro Marine 20 safety flooring should be installed in accordance with BS 8203: 2001 and Altro's recommendations using AltroFix 19 water resistant adhesive to base subfloor and AltroFix 25NF for coves and vertical surfaces.
2. Altro Marine 20 is a directional material and this fact should be taken into account during installation. A special chisel for trimming of weld rod on Altro Marine 20 is available from Altro.

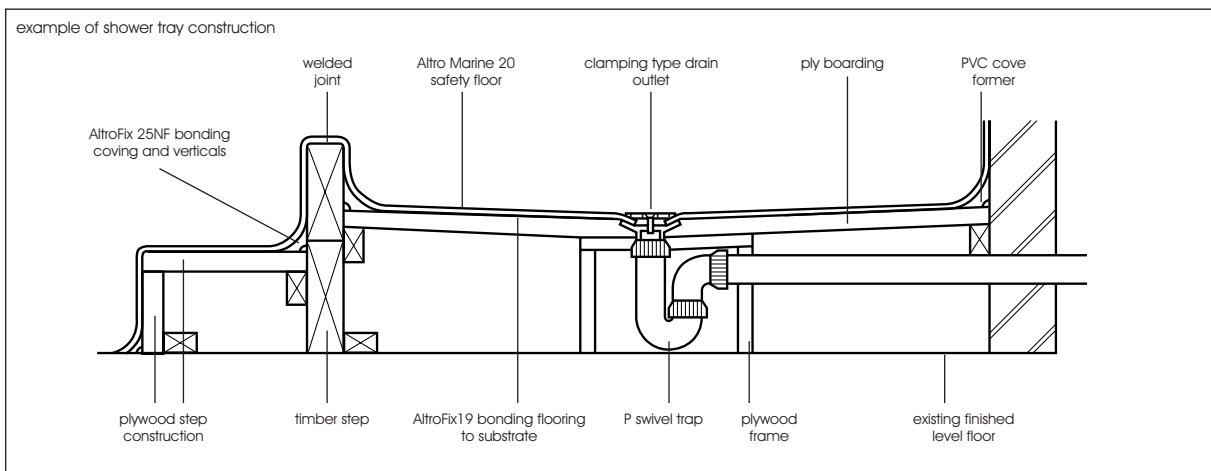


## Level access showers

The flooring should be cut in, grooved and hot welded at joints. Corners should be mitred and hot welded. The material should be self-coved over a 38mm radiused cove former and taken up the wall to a height of 100mm – 150mm. The junction between floor and wall should be sealed in a suitable manner (see section on Wall Finishes).

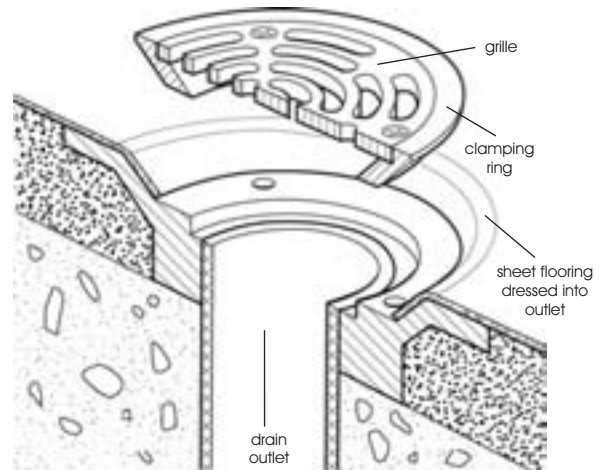
## Trays

Trays must be constructed of timber or concrete. An example of the former is shown below. Altro Marine 20 safety flooring is laid into the tray and dressed over the coves and adhered with AltroFix 19 in the tray and AltroFix 25NF on all coves and vertical surfaces. Joints are cut-in, grooved and hot welded and internal and external mitres are hot welded. The flooring is coved at the wall and the junction between floor and shower tray using a cove former.



## Detailing – drain outlet

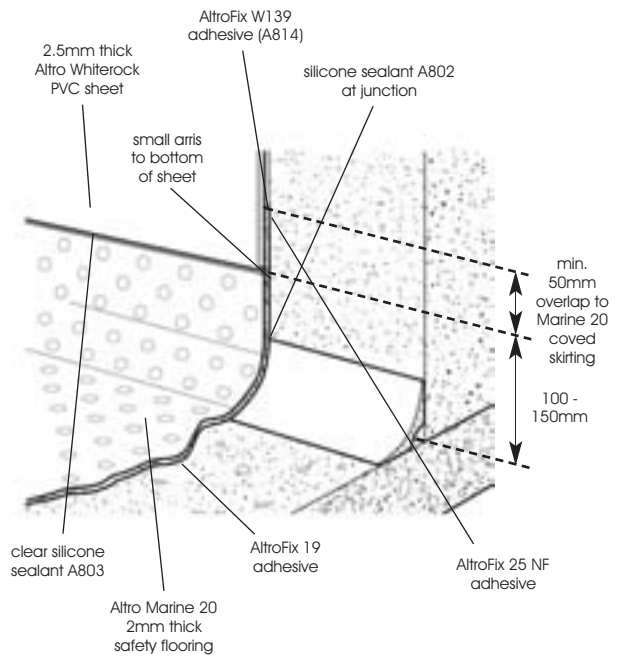
A 'clamping' drain outlet, such as those available from Alumasc or Wade, should be used to ensure a watertight finish. The safety flooring is sealed into the body of the drain by means of a clamping ring, which is screwed into place as shown, creating an hygienic and waterproof installation. For more information, contact the manufacturers at the addresses listed overleaf.



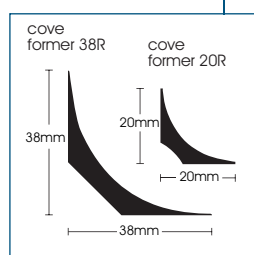
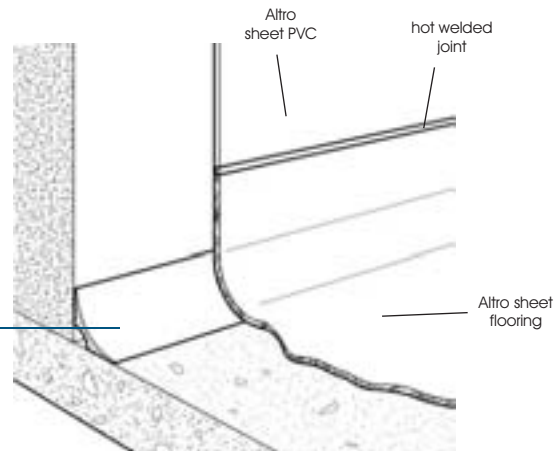
## Wall finish

A variety of wall finishes may be used in conjunction with Altro Marine 20 safety flooring in showers.

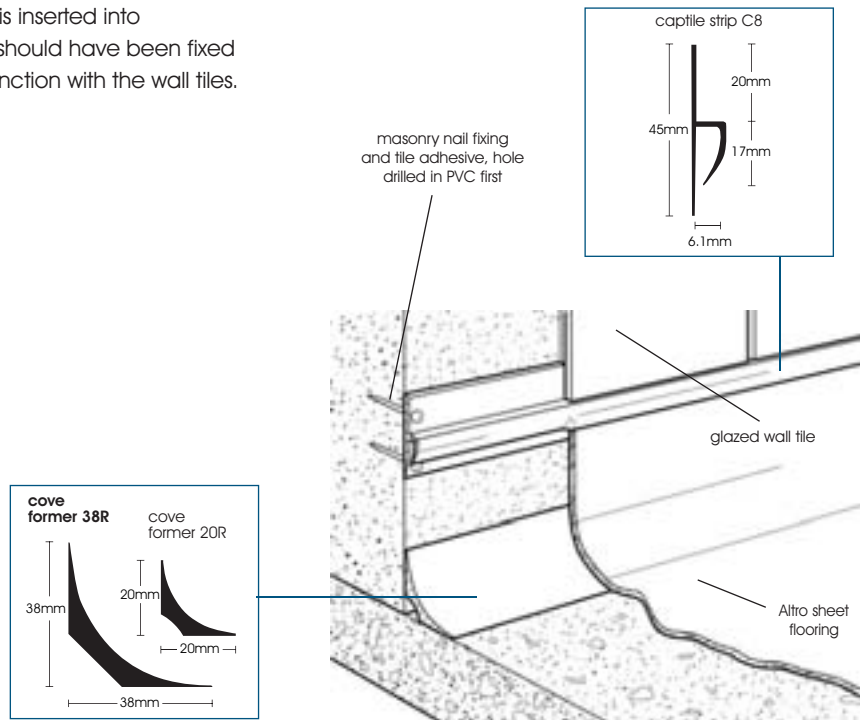
1 Altro Whiterock™ is an impact resistant PVC sheet wall and ceiling cladding. Its grout-free finish is hygienic and easy to maintain. It is thermoformed around corners and all joints are sealed. Altro Whiterock is installed using the glue-fix method and lapped over the Altro Marine 20 by a minimum of 50mm. The joint is sealed with mastic, creating an impervious, easy to clean finish from floor to ceiling.



2 AltroSmooth™ sheet vinyl, 2mm thick, may be hot welded to the floor finish to create a totally waterproof installation. AltroSmooth can be wrapped around corners and coved to the ceiling. All joints in the material are hot welded and there are no sharp corners to harbour dirt or bacteria.



3 Ceramic tiles – the floor finish is inserted into Altro Captile Strip C8™, which should have been fixed to the wall by the tiler in conjunction with the wall tiles.



### Further information

This data sheet is a guide to the installation of Altro Marine 20 in showers. Please telephone 01462 707600 for further advice.

Further information on Alumasc and Wade showers drains is available from the manufacturers:

Alumasc Building Products Ltd,  
 Burton Latimer, Kettering,  
 Northamptonshire, NN15 5JP.  
 Tel: 01536 383838 Fax: 01536 383830  
 E-mail: [info@abp-drainage.co.uk](mailto:info@abp-drainage.co.uk)  
[www.abp-drainage.co.uk](http://www.abp-drainage.co.uk)

Wade International UK Ltd,  
 20 Broton Drive, Halstead, Essex, CO9 1HE.  
 Tel: 01787 475151 Fax: 01787 475579

### Maintenance

Altro Marine 20 should be cleaned with a recommended cleaner such as Altroclean 44™, used according to the manufacturer's instructions. A deck scrubber may be used for small areas. In larger areas, machine scrubbing using stiff nylon or polypropylene bristles is recommended when required. A special cleaner may be needed occasionally to remove hard lime deposits. Routine maintenance recommendations for safety flooring are available from Altro.

INSTALLATION GUIDANCE  
 ALTRO MARINE™ 20  
 SHOWER INSTALLATIONS

for further information or technical advice

tel: 01462 707600 fax: 01462 707515

e-mail [enquiries@altro.com](mailto:enquiries@altro.com) or explore [www.altro.com](http://www.altro.com)