



altro

the future is safer with altro

North Tyneside Area Command Headquarters, Newcastle Upon Tyne

AltroScreed Quartz™ Altro TB Screed™,
AltroSeal™ (UVR), AltroTect™,
V/AltroSeal™ UVR

The North Tyneside Area Command Headquarters in Wallsend, Newcastle Upon Tyne, was a new 23 million pound development incorporating office facilities, custody suite and police headquarters serving the local community.

Complex operational requirements have been incorporated into the design particularly in relation to anti-terrorism measures. This project accommodates 275 people who include police officers, community support officers and police staff, as well as incorporating 40 modern cells based upon a 6 acre site.

Build started in May 2009 and was completed at the end of August 2010 incorporating modern modular methods of construction, constructed by Miller Construction on behalf of Northumbria Police in association with Ryder Architecture.

Considerable effort was made from the original consultation through to specification and completion to ensure that all requirements were met in terms of durability, performance requirements and design. Bespoke blends and colours were developed to ensure that the finishes matched both DDA requirements and those set by home office guidelines as well as matching the concept of such a modern building from a design and colour perspective.

Many obstacles were overcome by the installers Reprotect, in terms of dampness and preparation, whilst demonstrating great skill to

ensure that application and detailing to ceilings, walls and floors were finished to the highest standard possible whilst working within time constraints.

The colours selected by the designers create a stunning, bright, clean environment for those in custody. These colours increase the required level of skill during installation, in that light coloured screeds are more prone to metal transfer from steel installation equipment. Radiused external corners, for the protection of occupants, also demand great skill and deny the opportunity to pause during installation.

Existing products were used in an innovative way to great effect to overcome potential barriers to installation, pushing boundaries to produce a stunning finish. The modular building structure was prefabricated in high strength concrete. When tested and inspected the internal surfaces contained a high water content and very dark surface colour.

AltroProof Solo™ eliminated delay in the programme tolerating damp, difficult surfaces and suppressing moisture on all the internal surfaces – floors, walls and ceilings.

AltroProof's pigmentation and film build resulted in high hiding power allowing subsequent full opacity coverage with a single coat of special AltroTect further reducing project cost and time.

The specified AltroTect ICS is a high build coating of neutral colour and increased UV stability, this facilitated the light coloured bespoke palette which was the functional and aesthetic theme.

For further information on Altro's vast product range of interior surfaces, which also includes doors and ceilings:

Tel: 01462 707600

Email: enquiries@altro.com

Web: www.altro.com

The products, colour scheme and surface finishes were tested and sampled extensively in order to meet light reflectance and design requirements.

A water based UV stable polyurethane, AltroSeal UVR WB, reduced the gloss levels to provide the necessary diffused light reflectance and low glare to facilitate the necessary CCTV operation.

AltroScreed Quartz and Altro TB Screed were provided in standard and bespoke colour-ways for the flooring and rendered surfaces to meet the particular regulatory and design needs.

The decorative coloured aggregates are based on a very high quality, clear, neutral quartz used in the manufacture of high tech optical lenses; this in conjunction with a UV stable polyurethane coating gives true, clean colours and great durability of appearance. The white grains comprise calcined quartz which is coloured white throughout its depth and demonstrates very high hardness and abrasion resistance.

The combination of these grains maintains a balance of the highest levels of mechanical and aesthetic performance. (Physical marring of the screed and render which conventionally appear white may be recovered by the local treatment with a clear coat).

The flooring, wall render and other finishes are tailored to the function and demands of each environment some further examples of which include:

In common and circulation areas - AltroScreed Quartz Opal with a matt PU seal provides an intrinsic balance of ease of cleaning and slip resistance whilst offering sympathetic hiding of dirt pick up and appearance retention during the use of the building.



Floor/wall junctions - A special woven glass-fibre mesh of incredible strength was employed to reinforce vulnerable areas and accommodate potential concentrated stresses.

Showers – Graded, clear, slip resistant grains were used in bare foot areas to maintain the continuity of design and reduce the risk of abrasion whilst maintaining ease of cleaning and safety.

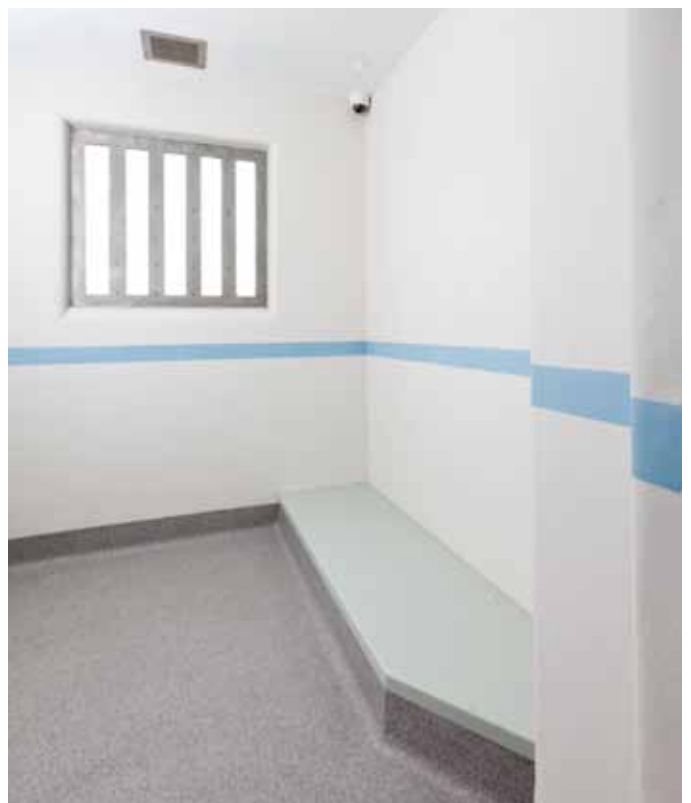
The product supplier engaged in extensive and close co-operation with Ryder Architecture to assist at the design stages, compiling many samples with various aggregate blends which were altered to create bespoke colour blends, ensuring appropriate colour contrast between surfaces within the building to satisfy requirements.

Colour selections were made to accommodate Home Office Guidelines, using colours proven to have a more calming influence on occupants and the inclusion of coloured banding in cells, also specified to satisfy those objectives.

The building's focal point, the central atrium, is spherical in shape which allows a large degree of natural light within the building, whilst other areas are designed to be functional and yet with modern angular linkages. High ceilings and wide width corridors also provide a significant feeling of openness and space.

Durable finishes, which offer impact and abrasion resistance, must be installed in a way which minimises the risk of accidental injury or deliberate self-harming and deny the opportunity for hidden storage of improvised weapons or drug paraphernalia, whilst creating a fresh, clean modern and stunning interior design.

All information is correct at the time of print and is subject to change without prior notice. Visit us at www.altro.com for more information and updates.



the future is safer with altro

For further information on Altro's vast product range of interior surfaces, which also includes doors and ceilings:

Tel: 01462 707600

Email: enquiries@altro.com

Web: www.altro.com