




- When cleaning the stainless steel hand dryer fascia, check for dirt and grease and wipe clean as directed in the 'Care of finishes' section.
- To open the Hand dryer panel, insert the Modric key supplied into the concealed lock (fig.1).

weekly checks

- If the panel door has dropped and you need to realign the panel door position, turn the screw (fig. 2) to the desired position until the door sits flush into the panel.
- If the panel door has become tight and difficult to open/close adjust the ball catch accordingly (fig.3).
- If panel door has become loose tighten screw on hinge (fig.4)

monthly checks

 For maintenance details of the washroom hand dryers please refer to page 5.



The hand dryer **MUST** be isolated from the power supply during installation or maintenance.

- **When cleaning the stainless steel hand dryer fascia**, check for dirt and grease and wipe clean as directed in the 'Care of finishes' section.
- **Remove** dust, fluff and any other build up of foreign matter from the inlet and outlet grille areas (Fig.7).
- **Clean and check** the sensor area is clear of obstruction, removing any obstructing matter if required.

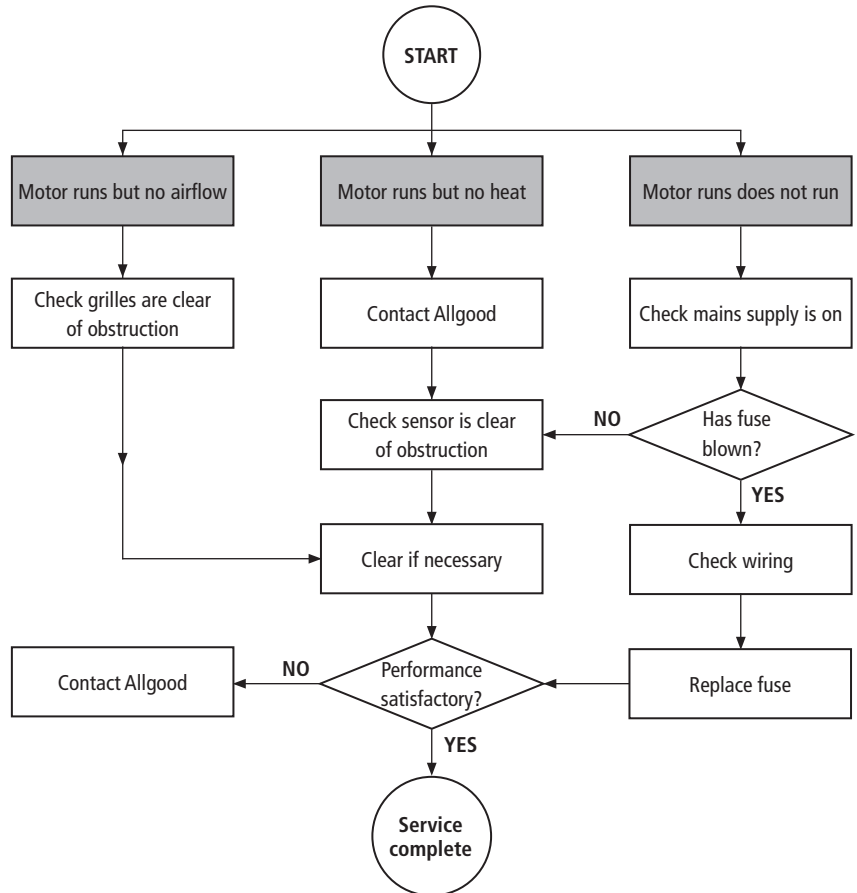
weekly checks

- **If there is movement in the hand dryer unit on the wall** check that the fixings are tight. If the hand dryer becomes loose, please tighten the relevant fixings (Fig.8).
- If after completion of the above checks the Modric surface mounted hand dryer is not working satisfactory, please contact **Allgood** on **020 7387 9951**

monthly checks



The hand dryer **MUST** be isolated from the power supply during installation or maintenance.





Satin Stainless Steel

Wipe clean with a medium strength detergent or white spirit using a soft cloth or sponge. Rinse and dry with a dry soft cloth. In the event of dirt having accumulated through neglect, application of aerosol lubricant prior to standard cleaning is recommended. A harsh brush should never be used.

Finish prefixes: SS

Polished Stainless Steel

Wipe clean with a medium strength detergent or white spirit using a soft cloth or sponge. Rinse and dry with a dry soft cloth. In the event of dirt having accumulated through neglect, application of aerosol lubricant prior to standard cleaning is recommended. A harsh brush should never be used.

Finish prefixes: PS