

Uniclass
L4181

EPIC
D181

CI/SFB
(31.59) X

November 2011

PegaSys *Lite*

Stand Alone Access Control



IR Ingersoll Rand
Security Technologies

PegaSys Lite is a 'Stand Alone' electronic access control system using either Mifare proximity technology or PIN code access.

Quickly and easily convert conventional lock cases into an access control terminal within 4 minutes. These self contained battery operated units require no wiring and can be fitted to any new door or existing door which is already fitted with a standard European style lock case.

PegaSys PIN - Operation and Code Options

An electronic clutch mechanism within the terminal connects or disconnects the lever handle to the lock. Unlike a conventional keypad, the PegaSys Lite terminal does not suffer from the durability and security problems associated with wear and tear.

The terminal can be activated using any of the different code types described below

Standard/User Code	<i>Opens the lock for a specified time (adj. 1-5 seconds). The terminal will store up to 126 user codes of between 3 and 8 digits.</i>
Delete Code	<i>Allows user codes to be instantly deleted from the memory</i>
Toggle Code	<i>Opens the lock for an undetermined time. Re-locking requires the code to be re-entered</i>
Freeze-Out Code	<i>Renders all user codes inoperative. Only master code can be used to open the lock</i>
Service Code	<i>Acts like a Standard/User Code but once used is erased from the terminal's memory</i>
Supervised Code	<i>Requires 2 valid user codes to be entered one after the other. Any combination of these codes can be used</i>
Master Code	<i>Opens the lock even if the lock is inactive through use of the Freeze-Out Code, or due to low battery power</i>



Choose PIN or Prox

PegaSys Lite is available as either a PIN code reader or as a Proximity reader.

So which one to choose ...?

PegaSys PIN Applications

The PIN terminal has the inherent convenience of a digital code lock. Up to 126 memorable user codes can be assigned and deleted quickly and easily. Other codes allow the door to be put into a variety of locked/unlocked states. This flexibility means it may be particularly appropriate for commercial applications, schools and colleges etc where doors may require controlled access but can be left unlocked during periods of the day.

PegaSys Lite features a 'Quick Change' battery unit which enables batteries to be replaced in seconds.

Scan here to see how simple battery replacement is with PegaSys Lite.



PegaSys Intelligent Access Control

Features common to PegaSys PIN and PegaSys Prox terminals:

- Electronic lock can be installed within 4 minutes
- Terminals are easy to install and program providing a 'Fit & Forget' installation
- Provide the convenience of access control but without the cost of hard wiring
- Solid stainless steel robust construction
- No wiring, programming or card formatting
- Mounting plate can be bolted through the door
- Clutching mechanism renders the outside lever inoperative until a valid code or fob is presented
- Standard return to door lever in stainless steel can be reversed on-site for LH or RH applications
- Suitable for all doors fitted with European style mortice locks with a backset in excess of 30mm
- Quick change battery box (see bottom of page 1)
- Units can be fitted back to back (giving read in/read out capability) or with a simple plate mounted lever on the inside of the door
- Powered by 3 x AA batteries
- Visual and audible 'low battery' warning
- LEDs provide visual indicators for programming and other functions
- Units are suitable for doors 40 - 54mm thick

PegaSys Prox - Operation and Programming

The PegaSys Proximity reader uses Mifare RFID contact free technology to control the activation of the lever handle in order to operate a door fitted with a standard European mortice lockcase.

A programming card puts the terminal into a "Learning Mode" allowing the 'ready-programmed' user fobs to be presented to the terminal and saved into its memory.

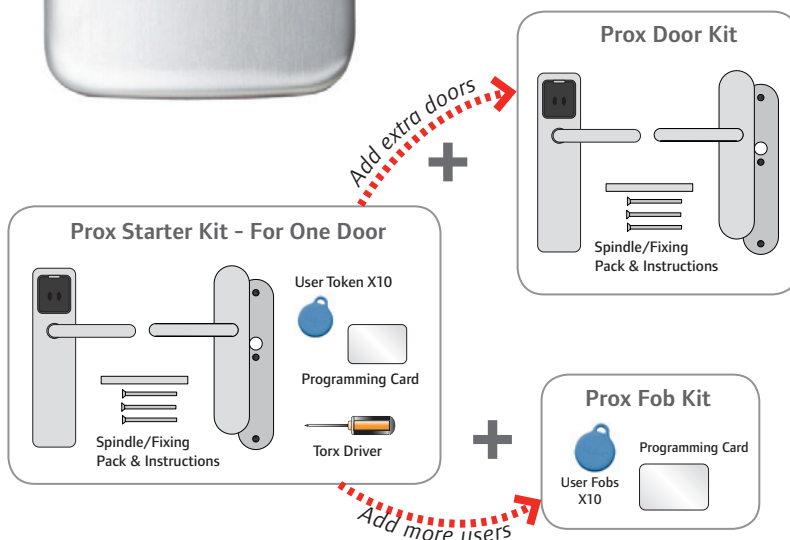
Build & Upgrade

The PegaSys Prox system comes in kit form. The 'Prox Starter Kit' contains all the components needed for installation onto a single door including detailed installation instructions. By adding 'Door Kits' you can build up the system to incorporate multiple doors, or by adding the 'Fob Kit' to incorporate more users.

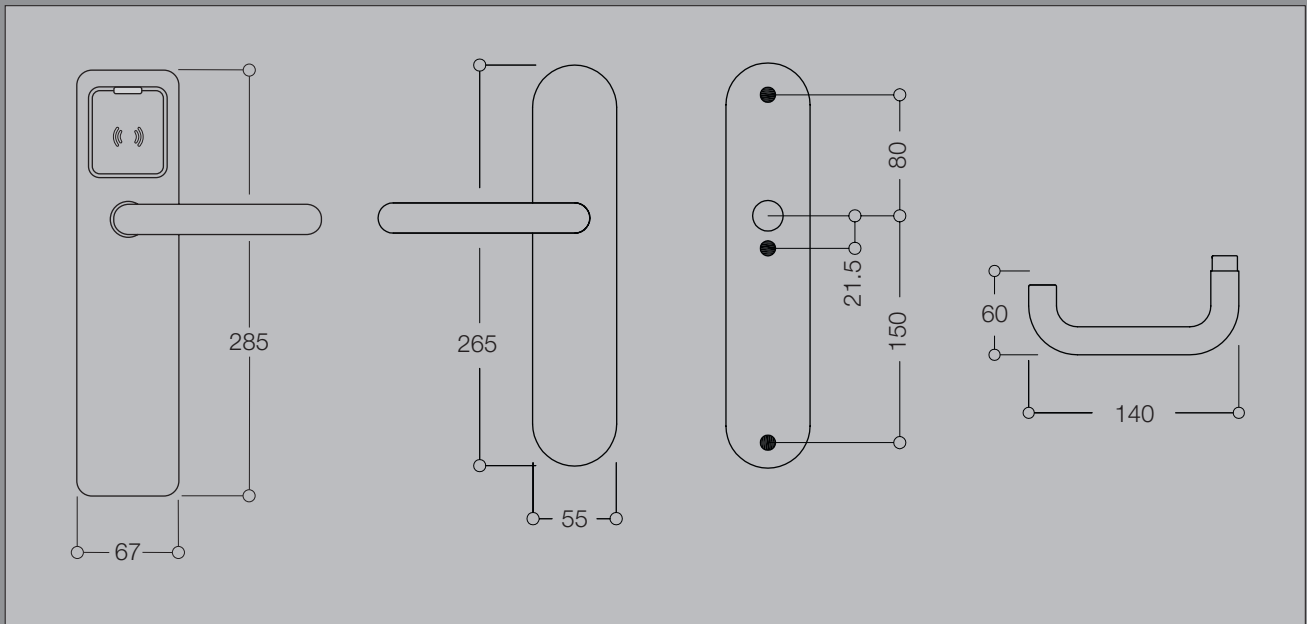


PegaSys Prox Applications

The Prox reader is ideally suited to applications requiring a higher level of security for a small number of doors. Typically this is a commercial premises where the workforce is relatively small such as an office, doctor's surgery or leisure centre for example.



PegaSys Dimensions



Ingersoll Rand Security Technologies manufactures Briton, the UK's number one brand of door controls. Our portfolio also includes Briton panic exit hardware, locks, door furniture, cylinders, Normbau coloured nylon design systems, automated and steel doors and CISA hotel locking and security systems.



Ingersoll Rand Security Technologies is a leading global provider of products and services that make environments safe, secure and productive. The sector's market-leading products include electronic and biometric access control systems; time & attendance and personnel scheduling systems; mechanical locks and portable security; door controls, exit devices and architectural hardware; performance steel doorsets and automated openings; and other technologies and services for global security markets.

Ingersoll Rand Security Technologies

Bescot Crescent Walsall West Midlands WS1 4DL

Tel. 01922 707400 Customer Care Centre Tel. 08706 012012 Customer Care Centre Fax. 0800 834103

Email info@ingersollrand.co.uk Web ingersollrand.co.uk

Whilst Ingersoll Rand Security Technologies has taken every care to ensure the accuracy of information, data or advice contained in this literature, no liability in respect of such information or advice, whether given negligently or not, can be accepted by the company. Ingersoll Rand retains the right to amend the technical specification of any range of equipment shown without prior notice.