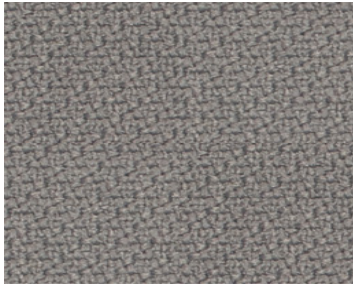




_FABRICS COLLECTION
2013-2015

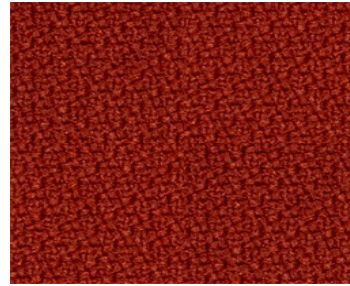
Fabrics Step



4016 Light Grey



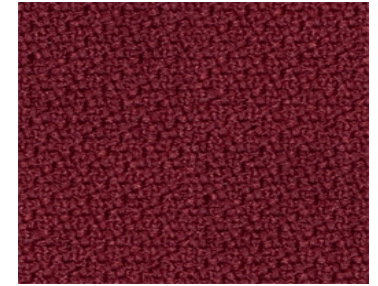
4033 Dark Beige



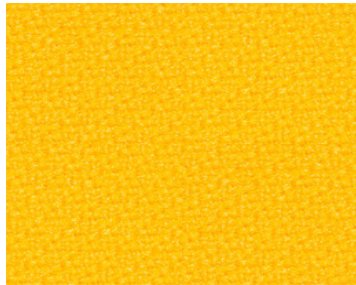
4034 Orange Brown



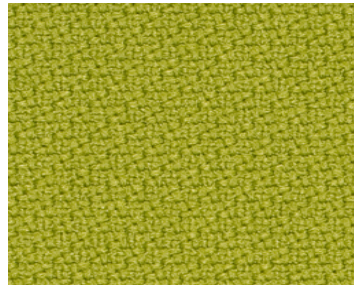
4038 Dark Brown



4056 Dark Orange



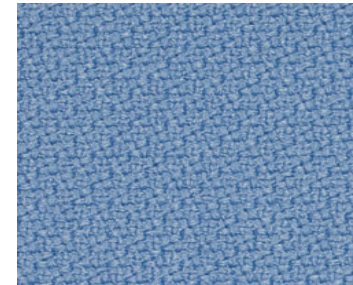
4062 Yellow



4069 Olive Green



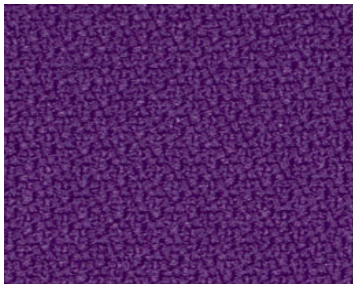
4076 Green



4080 Light Blue



4088 Dark Blue



4097 Purple

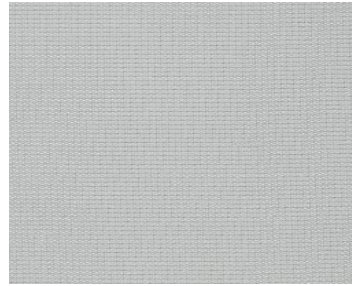
Fabrics Cava



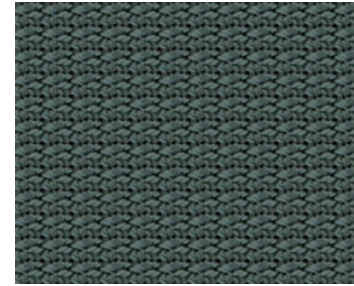
0317 Brown Grey



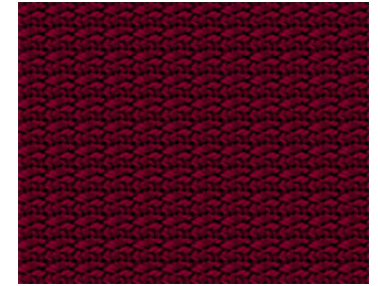
0319 Black



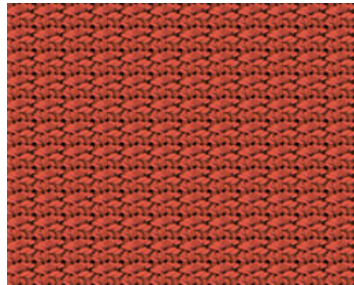
0323 Pebble Grey



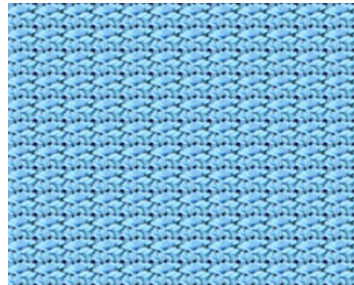
0326 Dark Warm Grey



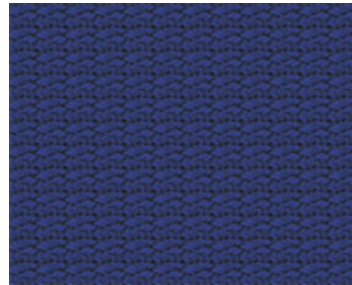
0348 Dark Red



0357 Red Orange



0381 Pastel Blue

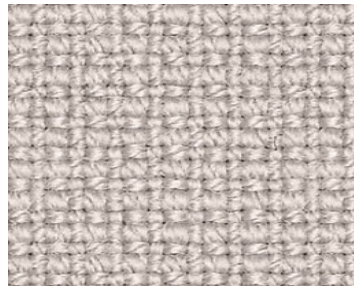


0387 Navy Blue

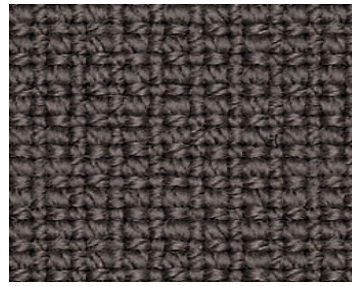
Fabrics Fame



3219 Black



3223 Pebble Grey



3226 Dark Warm Grey



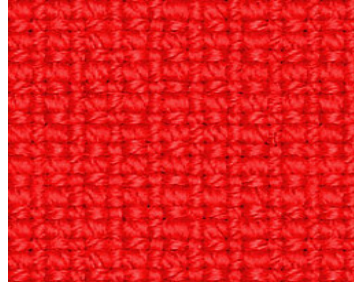
3233 Grey Beige



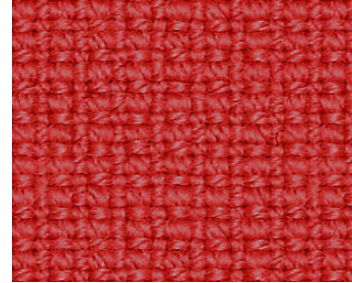
3235 Brown



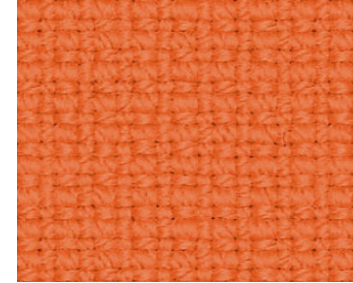
3238 Dark Brown



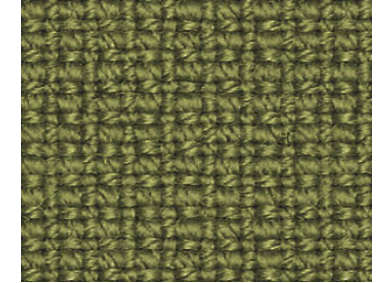
3243 Vermilion



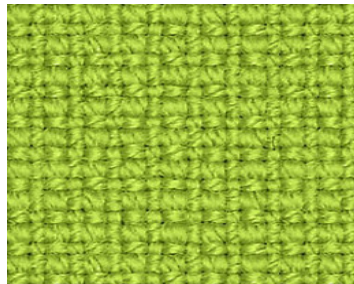
3245 Red



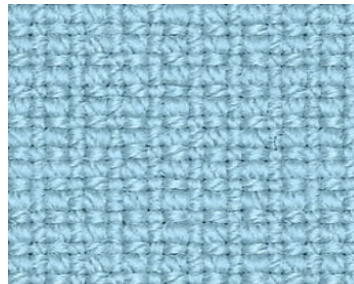
3255 Orange



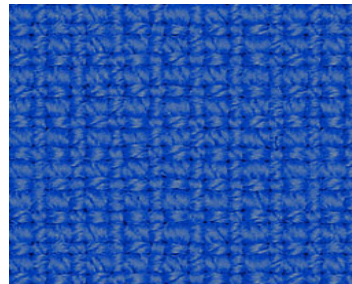
3269 Olive Green



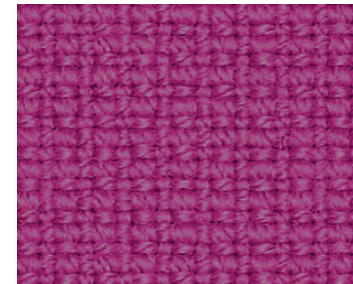
3271 Fern Green



3281 Pastel Blue

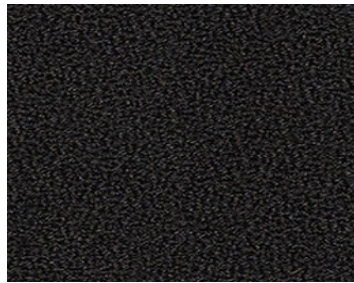


3285 Cornflower Blue

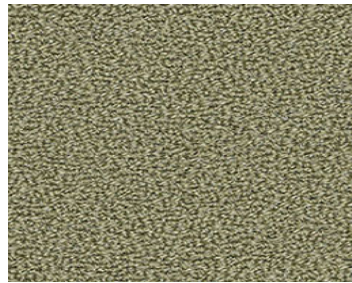


3297 Purple Violet

Fabrics Gaja C2C



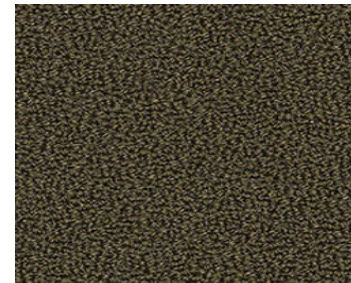
4919 Black



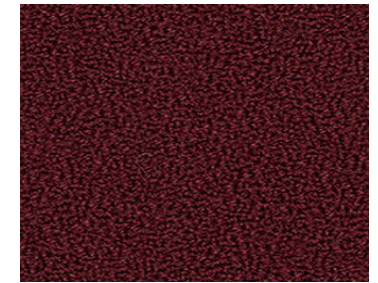
4924 Beige



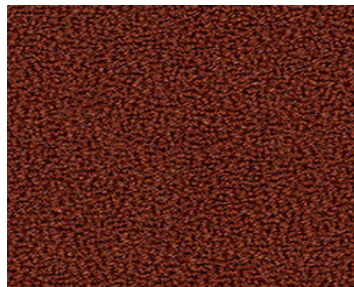
4932 Beige



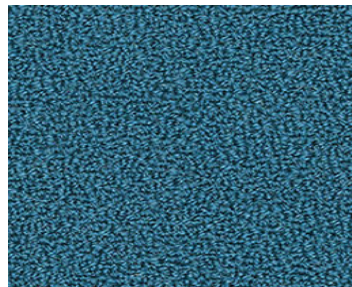
4939 Black Brown



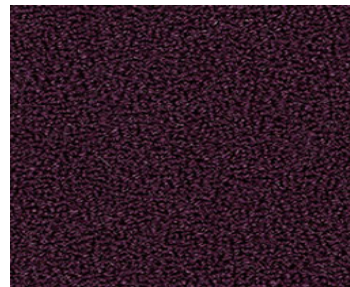
4943 Light Red



4958 Orange Red

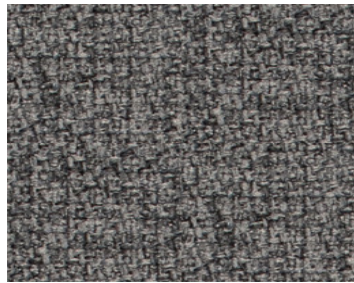


4984 Turquoise Blue



4998 Dark Violet

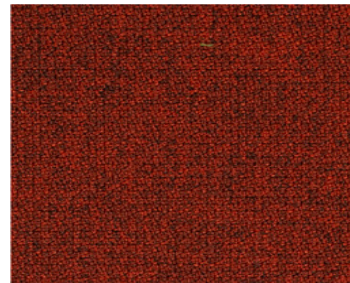
Fabrics Step Melange



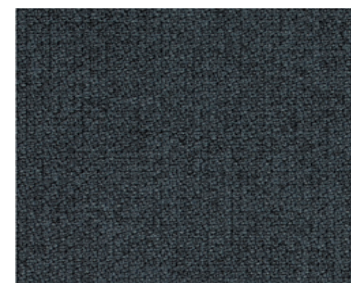
4116 Grey



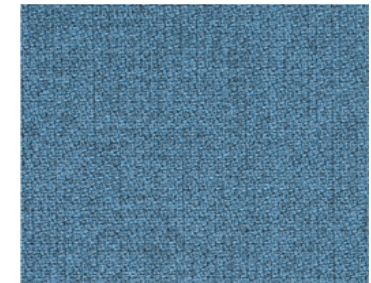
4138 Dark Brown



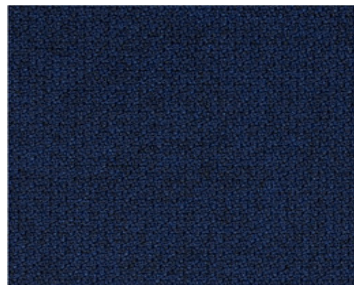
4157 Russet



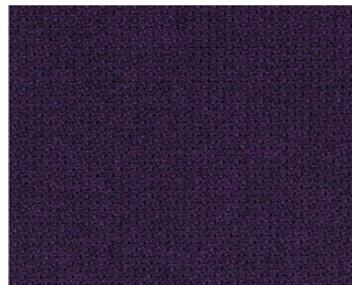
4176 Green



4180 Light Blue

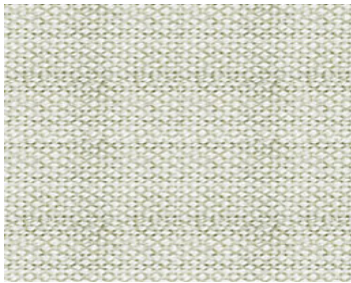


4188 Dark Blue

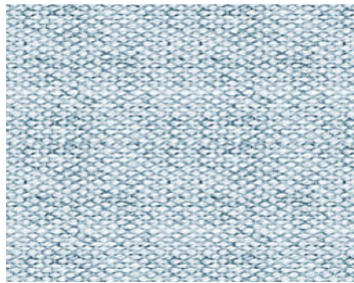


4198 Dark Violet

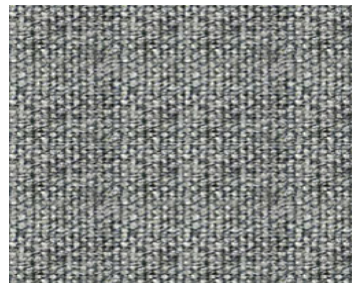
Fabrics Remix



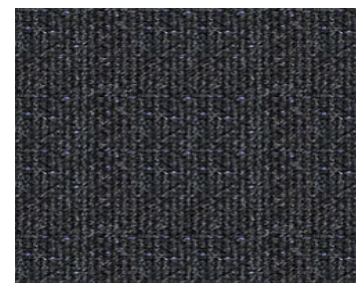
2011 Cream



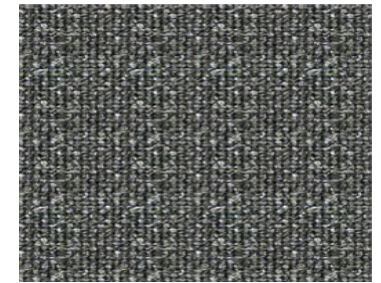
2014 Light Blue Grey



2016 Grey



2018 Anthracite



2023 Pebble Grey



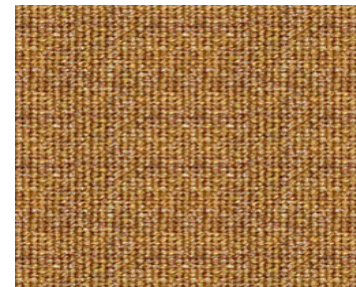
2032 Beige Brown



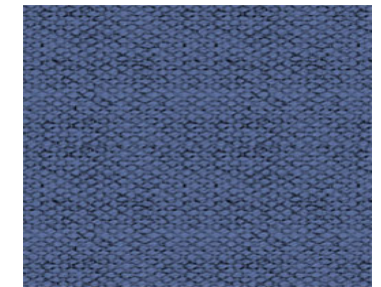
2034 Orange Brown



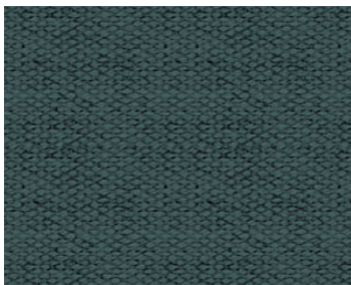
2046 Red



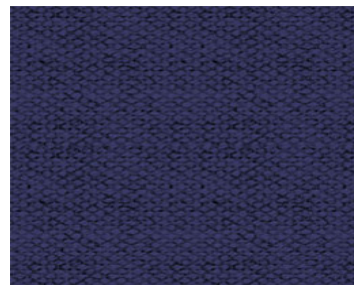
2056 Dark Orange



2086 Blue



2087 Night Blue

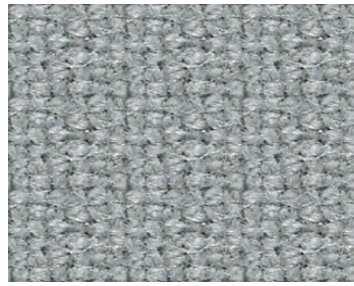


2088 Dark Blue

Fabrics Tonus 3



5011 Cream



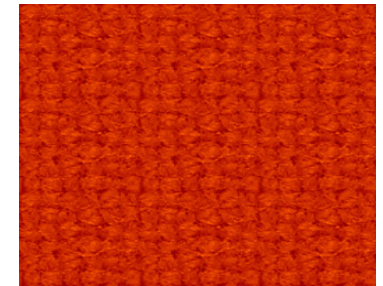
5013 Grey



5019 Black



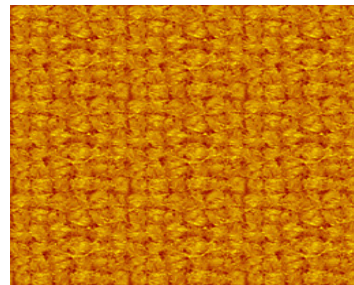
5034 Camel



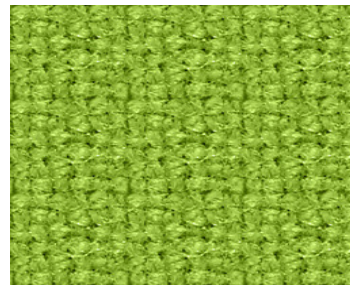
5043 Vermilion Red



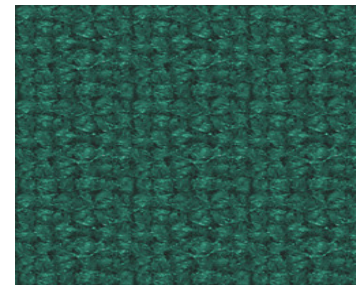
5049 Aubergine



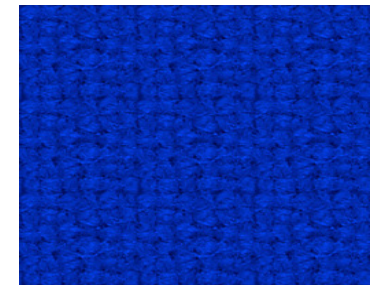
5055 Ochre Orange



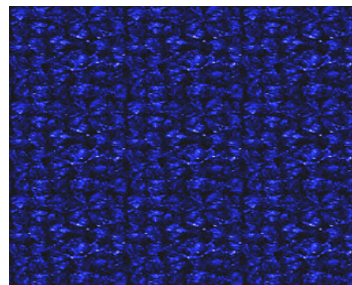
5061 Yellow Green



5009 Forest Green



5087 Cornflower Blue

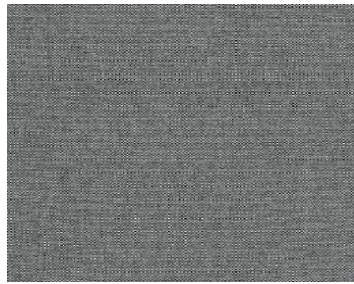


5089 Navy Blue



5096 Light Violet

Fabrics Field



3916 Grey



3929 Dark Grey



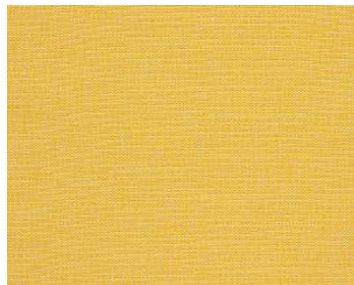
3934 Grey Beige



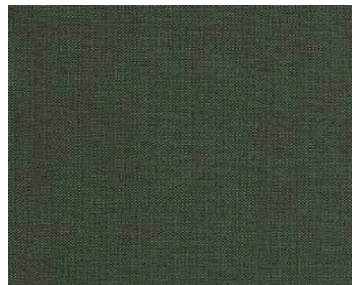
3940 Red Pink



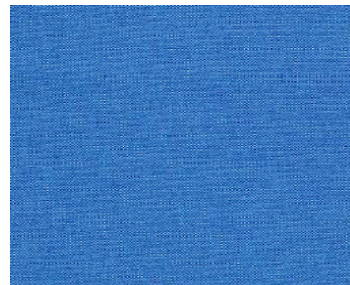
3958 Rust Brown



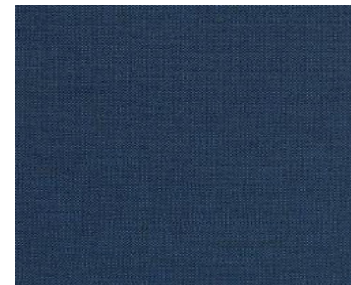
3962 Yellow



3979 Black Green

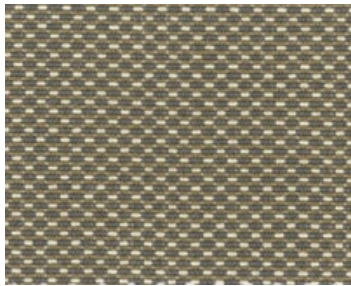


3982 Aquamarine

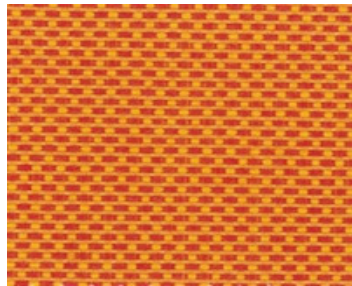


3988 Dark Blue

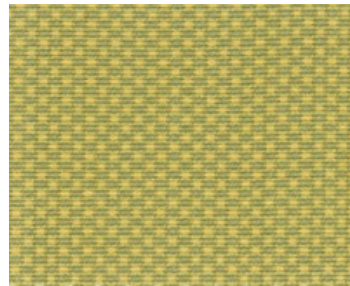
Fabrics Matrix C2C



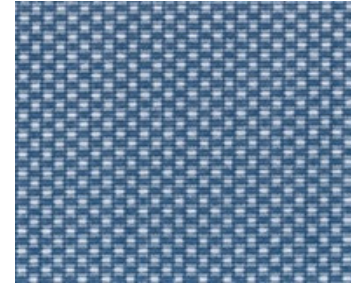
4633 Grey Beige



4655 Orange

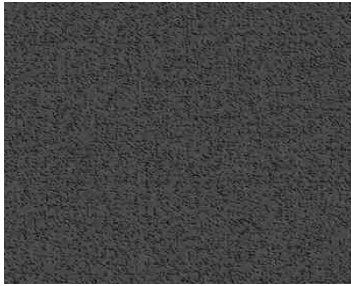


4668 Yellow Green

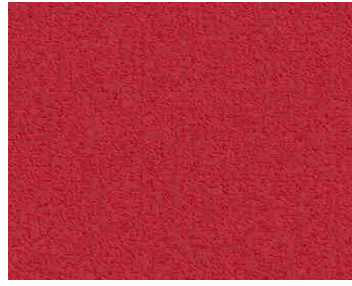


4680 Light Blue

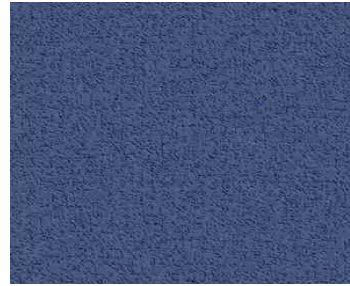
Fabrics Stamskin



6819 Black



6846 Bordeaux Red



6888 Dark blue

Fabrics Divina 3



1817 Dark Grey



1819 Black



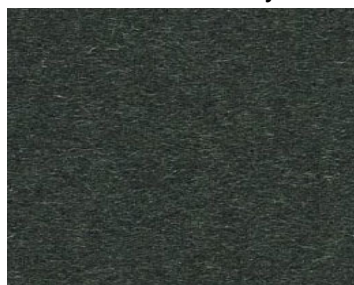
1846 Purple Red



1849 Aubergine



1853 Yellow Orange



1859 Black Brown



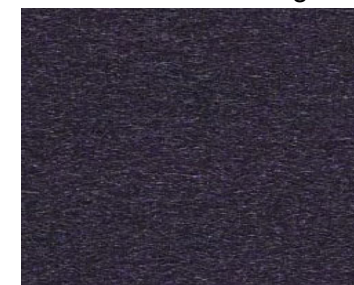
1871 Pale Green



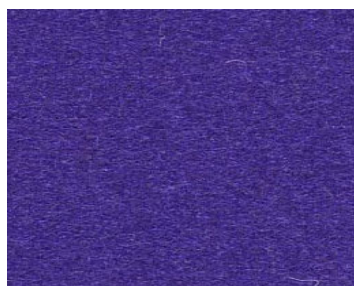
1887 Fresh Blue



1890 Night Blue



1892 Night Violet



1898 Dark Violet

Fabrics Divina 2 Melange



1911 Cream



1918 Anthracite



1934 Orange Brown



1936 Grey Brown



1938 Dark Brown



1945 Red



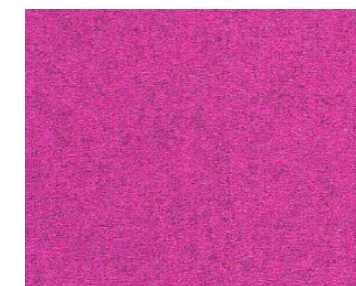
1966 Yellow Green



1980 Light Blue

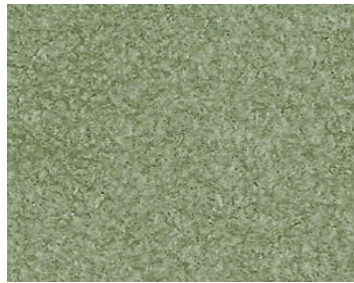


1982 Aquamarine



1995 Magenta

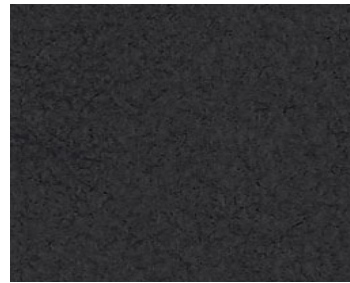
Fabrics Comfort



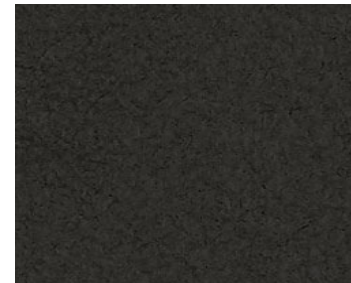
5408 Grey Green



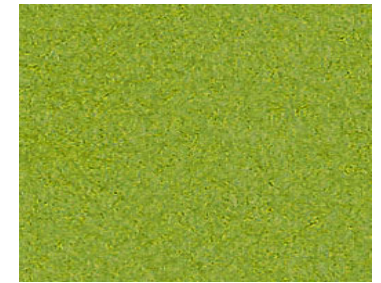
5416 Fresh Grey



5417 Dark Grey



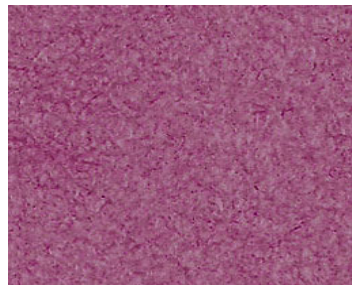
5426 Dark Warm Grey



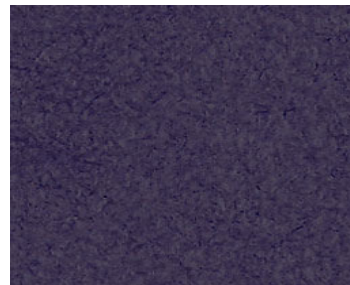
5428 Mos Green



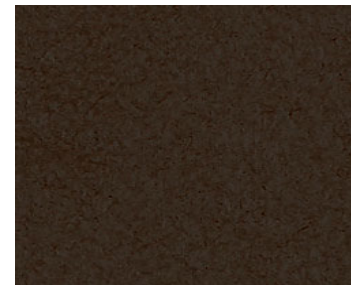
5436 Red Brown



5442 Red Pink



5449 Aubergine



5459 Black Brown



5464 Dark Yellow



5403 Cyan



5486 Blue



5495 Magenta

Fabrics Leather



6610 White



6619 Black



6649 Dark Red

Fabrics Specifications

Name	Step	Cava 3	Fame	Gaja C2C	Step melange	Remix 2
Brand	Gabriel	Kvadrat	Gabriel	Gabriel	Gabriel	Kvadrat
	The simple but characteristic oatmeal weave, gives the fabric a good body and dictrete direction.	A simple comb yarn upholstery with a crepe weave and a extremely hard-wearing.	The fabric is silky smooth thanks to it's fine wool. With a wearability of 200.000 Martindale.	Gaja is a modern classic with elegant crepe structure.	The simple but characteristic oatmeal weave, gives the fabric a good body and dictrete direction.	Remix is made from melange yarns, the result is irregular colours playing accross the surface of the fabric.
Material	100% Trevira CS	90% new wool/ 10% nylon	95% Wool/ 5% Polyamide	100 % Pure Wool	100% Trevira CS	90% new wool/ 10% nylon
Martindale abrasion resistance	100.000	80.000	200.000	50.000	100.000	100.000
Lightfastness	5-7	5-7	5-7	5-7	5-7	6
Flame retardant with fire code	EN 1021 1/2 BS 5852 part 2	EN 1021 1/2 BS 5852 part 2	EN 1021 1/2 BS 5852 part 2	EN 1021 1/2 BS 5852 part 2	EN 1021 1/2 BS 5852 part 2	EN 1021 1/2 BS 5852 part 2
Ahrend colour range	11	8	10	8	7	12
Total colour range	25	49	60	35	18	48
Pricerange	*	*	*	*	**	**

Name	Tonus 3	Field	Matrix	Divina 3	Divina Melange	Comfort +
Brand	Kvadrat	Kvadrat	Climatex	Kvadrat	Kvadrat	Gabriel
	Genuine classic and preferred for covering of the modern furniture that require a flexible yet strong upholstery.	Field is yarn-coloured and woven with double weft and warp threads in different colours which gives a chequered effect	Matrix fulfill the highest expectations with regard to well-being, beauty and safety. The result is a Cradle to Cradle fabric.	Full-cloth product, the surface is smooth directionless and uniform very similar to the properties of felt.	A textile characterised by it's lack of texture. With a look and feel very similar to the properties of felt.	Comfort+ resembles suede. Functional and sophisticated at one and the same time.
Material	90% new wool/ 10% helanca polyamide	100% Trevira CS	60% wool/ 40% lenzing FR	100% new wool	100% new wool	88% polyester/ 12% polyurethane
Martindale abrasion resistance	50.000	100.000	50.000	45.000	45.000	150.000
Lightfastness	6-7	7	5	5-7	5-7	5-7
Flame retardant with fire code	EN 1021 1/2 BS 5852 part 2	EN 1021 1/2 BS 5852 part 2	EN 1021 1/2 BS 5852 part 2	EN 1021 1/2 BS 5852 part 2	EN 1021 1/2 BS 5852 part 2	EN 1021 1/2 BS 5852 part 2
Ahrend colour range	12	9	4	11	12	13
Total colour range	64	24	19	56	24	77
Pricerange	**	**	**	***	***	***

Koninklijke Ahrend NV
Laarderhoogtweg 12
1101 EA Amsterdam
T +31(0)88 - 00 60 000
E info@ahrend.com
I www.ahrend.com

