

1.0 GROUND CONDITIONS: The customer should ensure that the minimum dimensions shown are suitable for the existing ground conditions. Engineering advice may be necessary.

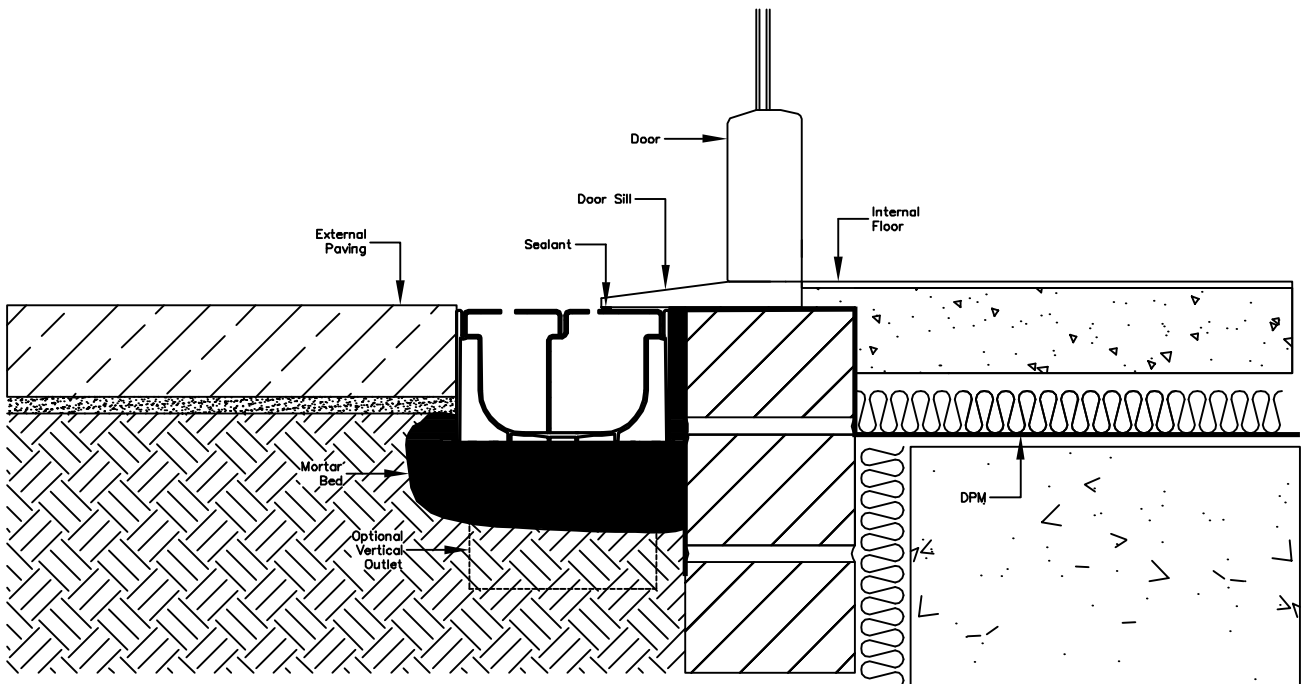
2.0 CONCRETE BEDDING

The concrete or mortar bedding is to provide adequate support to the channel. For domestic pedestrian traffic, and in good ground, a brickwork mortar may be sufficient, or alternatively we recommend a concrete of minimum compressive strength 15N/mm² (e.g. mix ST3 to BS8500-1)

3.0 JOINT SEALANT: Where ACO Doorway Drain channel joints and fittings are to be sealed contact a sealant specialist for guidance on the most appropriate sealing compound to use.

4.0 SURFACE PROTECTION: In asphalt pavements avoid contact between compaction equipment and channel/grating. This may be achieved by ensuring that the finished surface lies above the grating level (by at least 3mm). Stones should be removed from the grating prior to laying/rolling wearing the course.

5.0 GENERAL INSTALLATION NOTES: See drawing E1-E01-003-3 for general notes on installation



A	06/8/08	Drawing Issued			ZG
Issue	Date	Description			Name
Material:	n/a	Weight:	n/a		
Tolerance:	n/a	Surface Finish:	n/a		
				ACO Business Park Hitchin Road, Shefford, Bedfordshire, SG17 5TE. Tel: 01462 816666 Web site: www.aco.co.uk	
	Date	Name	Scale: NTS	Unit:	Projection: ISO-E
Drawn:	01/08/08	ZG		mm	
Checked:	06/08/08	RK		Project No.	
Update:				n/a	
Title			Drawing No.		Issue
ACO DOORWAY DRAIN TYPICAL INSTALLATION			E1 E01-058-3		A
Part No.			Replacement for: n/a		
			Replaced by: n/a		

Information contained in this drawing is copyright property of ACO Drain. Any reproduction in part or whole without written permission of ACO Drain is prohibited