



CHANNEL
DRAINAGE

SLOT
DRAINAGE

THRESHOLD
DRAINAGE

LANDSCAPING
SYSTEMS

ATTENUATION
& INFILTRATION



ACO Urban + Landscape product guide.
Domestic drainage & landscaping systems.

www.aco.co.uk/urban



Urban + Landscape Products



Channel Drainage



Slot Drainage



Threshold Drainage

2



Attenuation & Infiltration



Landscaping Systems

3

Key for product pages

LOAD CLASSES AND TYPICAL USES ACCORDING TO BS EN 1433:2002



A 15 Pedestrian, cycleways and domestic drives.



B 125 Pedestrian precincts, light vehicles, private car parks.



C 250 Parking areas, service stations (cars) and slow-moving light commercial vehicles.

HYDRAULIC CAPACITY



LOW



MEDIUM



HIGH

MATERIAL



POLYMER CONCRETE



PLASTIC / COMPOSITE



RECYCLED MATERIAL



STEEL

GRATING CHOICE



LIMITED



SMALL



WIDE

Complete the look of your home and garden



*Complete
The Look*

www.aco.co.uk/urban

New range of gratings available
for your landscaping project.
See pages 10 to 15

CHANNEL
DRAINAGE

ACO HexDrain®



The ideal drainage channel for domestic applications

Benefits

- High quality polypropylene channel, suitable for pedestrian and vehicle traffic up to 1.5 tonnes
- Channels clip together for quick and easy installation
- A choice of six gratings are available to suit your decorative requirements

Applications

- Driveways
- Patios
- Paths



COMPLETE THE LOOK

*New range of gratings available.
See pages 10 to 15*

How to Install



Step 1.
Dig trench 175mm wide by 130mm deep for channel (400mm deep for sump). Mark finishing height with fixed line 3mm below final surface. Lay 50mm (min.) bed of concrete.



Step 2.
If using sump unit as outlet cut off outlet spigot, position sump in concrete bed and fit PVC-U Ø110mm pipework connection to drainage.



Step 3.
Knock out preformed base of corner unit and remove appropriate cut-out for channel connection. Connect corner unit to sump. Check line and level of corner unit and backfill with concrete.



Step 4.
Lay channels from outlet corner unit ensuring joints clip together. Fit endcaps. With gratings fitted haunch around channels with concrete or suitable fill material. Final surface to be 3-5mm above grating.

Visit www.aco.co.uk/urban for more details

ACO HexDrain® accessories



End cap



Leafguard



Outlet connector



Corner unit with black plastic grating and vertical outlet



Sump unit

CHANNEL DRAINAGE

ACO RainDrain®



The ideal drainage channel for domestic and light duty applications

Benefits

- High quality polymer concrete channel, suitable for pedestrian and vehicle traffic up to load class B 125†
- Channels interlock for quick and easy installation
- Available with cast iron grating for improved 12.5 tonne loading

†Dependent on grating choice

‡When installed with cast iron B 125 grating

Applications

- Driveways
- Patios
- Small Private Car Parks**



COMPLETE THE LOOK

New range of gratings available. See pages 10 to 15

8

How to Install



Step 1.
Dig trench 318mm wide (218mm wide if against a structure) by 200mm deep for channel (400mm deep for sump). Mark finishing height with fixed line 3mm below final surface. Lay 100mm (min.) bed of concrete.



Step 2.
Knock out pre-formed outlet from the inside (marked with hammer symbol) or fit sump or outlet endcap. Position sump or outlet channel on concrete bed, fit PVC-U union/trap to drainage pipework.



Step 3.
Lay channels starting from outlet/sump, ensuring joints connect by lowering units horizontally. Fit endcap to end channel. For fully watertight joints, use a suitable sealant (contact ACO for further advice).



Step 4.
With gratings fitted, haunch around channels/sumps with concrete (or for Load Class A 15 only, haunch with suitable fill material). Final surface to be 3mm above grating. Bricks/paviours should be laid in mortar for lateral stability.

Visit www.aco.co.uk/urban for more details

ACO RainDrain® accessories



Drain union



Horizontal foul air-trap



Closing endcap



Outlet endcap



Sump unit

9

CHANNEL DRAINAGE

Wedge Wire

Add prestige and value to your patio with the contemporary elegance of ACO's Stainless Steel Wedge Wire grating.



*COMPLETE
THE LOOK*

Visualise your project.
Visit www.aco.co.uk/completethelook

Antique Iron

Add character to your driveway or patio, with ACO's Antique Iron grating.



*COMPLETE
THE LOOK*

Visualise your project.
Visit www.aco.co.uk/completethelook

CHANNEL
DRAINAGE

Anthracite

High quality looks can be achieved with the versatile Anthracite grating.



*COMPLETE
THE LOOK*

Visualise your project.
Visit www.aco.co.uk/completethelook

12

Polished Stainless Steel

Cool and contemporary, ACO's Polished Stainless Steel grating gives driveways and patios a modern look.



*COMPLETE
THE LOOK*

Visualise your project.
Visit www.aco.co.uk/completethelook

13

Galvanised Steel

Elegance and warmth to suit traditional and contemporary settings.



*COMPLETE
THE LOOK*

Visualise your project.
Visit www.aco.co.uk/completethelook

Black Plastic

Renowned for quality and durability, ACO's Black Plastic grating will maintain its looks for years.



*COMPLETE
THE LOOK*

Visualise your project.
Visit www.aco.co.uk/completethelook



ACO HexDrain® Pro



The ideal drainage channel for light to medium duty traffic applications

Benefits

- High quality, high strength polypropylene channel, suitable for light to medium duty traffic up to load class C 250
- Drainlock technology allows quick and simple installation of gratings
- Corrosion resistant black composite Heelguard™ grating

Applications

- Domestic landscaping
- Public landscaping
- Car parks



16

How to Install



Step 1.
Dig trench, allowing for width of channel plus 150mm each side for concrete haunch and depth of channel plus 150mm for concrete bedding. Allow also for 150mm concrete around and beneath sump unit. Mark finishing height with fixed line 3mm below final surface. Lay 150mm (min) bed of concrete.



Step 2.
Knock out pre-formed outlet from the inside (marked with hammer symbol) and trim edges with a sharp knife. Fit outlet connector and sump. Position sump and outlet channel on concrete bed, fit PVC-U union/trap to drainage pipework.



Step 3.
Lay channels starting from outlet/sump, ensuring joints connect by lowering units horizontally. Fit endcaps to end channels. For fully watertight joints, use a suitable sealant (contact ACO for further advice).



Step 4.
With gratings fitted, haunch around channels/sumps with concrete. Final surface to be 3mm above grating. Bricks/paviours should be laid in mortar for lateral stability.

Visit www.aco.co.uk/urban for more details

ACO HexDrain® Pro accessories



Vertical outlet connector



Universal endcap



Sump unit with silt bucket



Foul air-trap



Universal gully

17

CHANNEL DRAINAGE

ACO CivicDrain®



The ideal drainage channel for light to medium duty traffic applications

Benefits

- High quality, high strength polymer concrete channel, suitable for light to medium duty traffic up to load class C 250
- Drainlock technology allows quick and simple installation of gratings
- Corrosion resistant black composite Heelguard™ grating

Applications

- Domestic landscaping
- Public landscaping
- Car parks



18

How to Install



Step 1.
Dig trench, allowing for width of channel plus 150mm each side for concrete haunch and depth of channel plus 150mm for concrete bedding. Allow also for 150mm concrete around and beneath sump unit. Mark finishing height with fixed line 3mm below final surface. Lay 150mm (min) bed of concrete.



Step 2.
Knock out pre-formed outlet from the inside (marked with hammer symbol) and trim edges with a chisel. Fit outlet connector and sump. Position sump and outlet channel on concrete bed, fit PVC-U union/trap to drainage pipework.



Step 3.
Lay channels starting from outlet/sump, ensuring joints connect by lowering units horizontally. Fit end caps to end channel. For watertight joints use a suitable sealant (contact ACO for further advice).



Step 4.
With gratings fitted, haunch around channels/sumps with concrete. Final surface to be 3mm above grating. Bricks/paviours should be laid in mortar for lateral stability.

Visit www.aco.co.uk/urban for more details

ACO CivicDrain® accessories



Drain union



940 Foul air-trap



920 Foul air-trap



Multifunctional endcap



Sump unit

19

CHANNEL DRAINAGE

Complementing and enhancing your outdoor space



ACO HexDrain® Brickslot



For projects where discreet channel drainage is required

Benefits

- High quality polypropylene channel, suitable for pedestrian and vehicle traffic up to 1.5 tonnes
- Compatible with up to and including 60mm deep block paving
- Channels clip together for quick and easy installation

Applications

- Block Paving
- Building Thresholds
- Paths



22

How to Install



Step 1.
Dig trench 325mm wide (225mm wide if against a structure) by 200mm deep for channel (400mm deep for sump). Mark finishing height with fixed line 3mm below final surface. Lay 50mm (min.) bed of concrete.



Step 2.
If using sump unit as outlet cut off outlet spigot, position sump in concrete bed and fit PVC-U Ø110mm pipework connection to drainage.



Step 3.
Corner and sump unit must be fitted in order to allow subsequent access for maintenance and cleaning. Knock out preformed base of corner unit and remove appropriate cut-out for channel connection. Connect corner unit to sump. Check line and level of corner unit and backfill with concrete.



Step 4.
Lay channels from outlet corner unit ensuring joints clip together. Fit endcaps. With Brickslot covers fitted haunch around channels with concrete. Bricks/paviours should be laid in mortar for lateral stability. Final surface to be 3-5mm above slot.

Visit www.aco.co.uk/urban for more details

ACO HexDrain® Brickslot accessories



End cap



Leafguard



Outlet connector



Corner unit with black plastic grating and vertical outlet

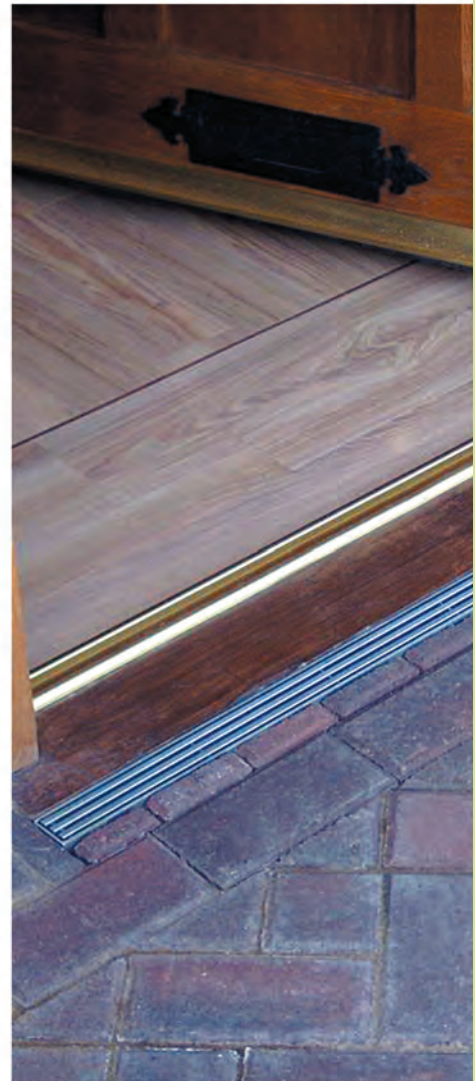


Sump unit

SLOT DRAINAGE

23

Bringing elegance and character to your threshold



ACO Doorway Drain



Unobtrusive high quality domestic threshold drainage

Benefits

- High quality polypropylene threshold drainage channel, eliminates water ponding at house entrances
- Corrosion resistant two piece stainless steel Heelguard grating, suitable for pedestrian traffic
- Channels clip together for quick and easy installation

Applications

- Level thresholds
- Residential developments



26

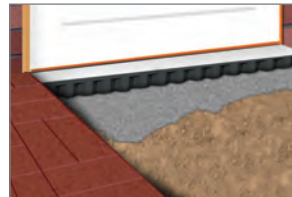
How to Install



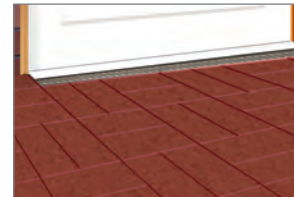
Step 1.
Dig trench 175mm wide by 130mm deep for channel. If connecting to underground pipework, knock out a preformed outlet at the required position in the base of the channel unit and fit the outlet connector.



Step 2.
Lay 50mm (min.) bed of concrete or mortar. Position the channel and fit to U-PVC Ø110mm pipework if required.



Step 3.
With gratings fitted haunch around channel with concrete or suitable fill material.



Step 4.
Protective film on gratings should now be removed. Complete the installation by sealing between the door sill and grating.

Visit www.aco.co.uk/urban
for more details

27

THRESHOLD
DRAINAGE

ACO StepDrain



Slimline domestic level threshold door drainage

Benefits

- High quality galvanised steel threshold drainage channel, eliminates water ponding at house entrances
- Corrosion resistant 304 stainless steel Heelguard grating, suitable for pedestrian traffic
- Available in 940mm and 1080mm lengths

Applications

- Level thresholds
- Residential developments

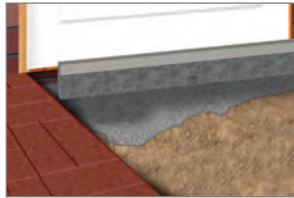


28

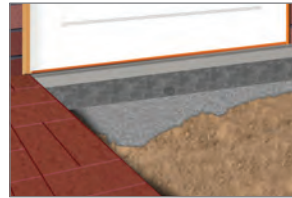
How to Install



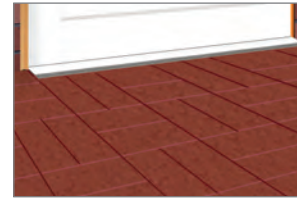
Step 1.
Dig trench 100mm wide by 210mm deep for channel. Remove cap from outlet.



Step 2.
Lay 50mm (min.) bed of concrete or mortar. Position the channel and fit to U-PVC Ø40mm pipework.



Step 3.
Haunch around channel with concrete or suitable fill material.



Step 4.
Protective film on gratings should now be removed. Complete the installation by sealing between the door sill and grating.

Visit www.aco.co.uk/urban
for more details

29

THRESHOLD
DRAINAGE

ACO DrainMat



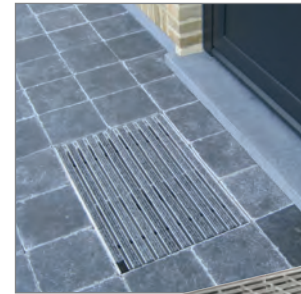
Matwell domestic level threshold door drainage

Benefits

- High quality matwell assembly, eliminates water ponding at house entrances
- Choice of four mat styles for use with a wide variety of external surface finishes
- Three base sizes available in two different materials

Applications

- Level thresholds
- Residential developments



30

ACO DrainMat matwell styles



Galvanised steel mesh grid



Anthracite carpet and aluminium mat

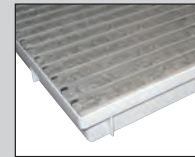


Light grey carpet and aluminium mat

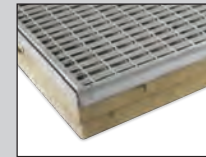


Black rubber and aluminium mat

ACO DrainMat bases



ACO DrainMat polypropylene base (image shows base with mat, mat supplied separately)

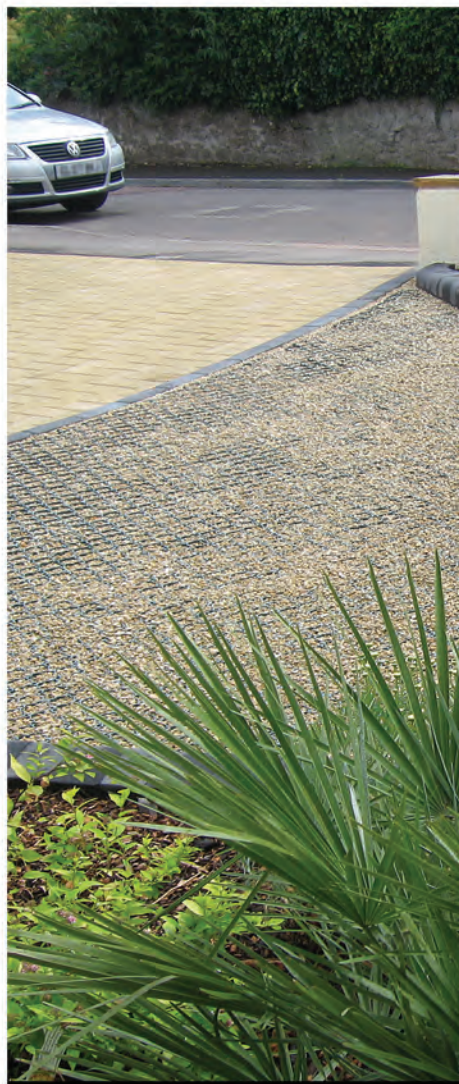


ACO DrainMat polymer concrete base (image shows base with mat, mat supplied separately)

To view ACO Indoor mats visit www.aco.co.uk/urban for more details

31

Creating attractive, strong and sustainable surfaces



ACO GroundGuard



Award winning tile for ground reinforcement

Benefits

- Stops grass rutting and gravel movement
- Robust system certified for loads up to 250 tonnes per m²
- 90% porous, providing effective drainage of surface water

Applications

- Driveways
- Private and Public Parking
- Access Routes
- Paths
- Shed Bases



34

How to Install



Step 1.
Dig out the existing base e.g. typically for light vehicle traffic / parking areas, 200-300mm will suffice. With heavy wheel loads or a clay soil, 400mm may be necessary.



Step 2.
Compact the sub-base. Fill the excavated area with free draining gravel or crushed stone to 100mm (grass) or 80mm (gravel) and tamp down. Level the area with a layer of fine aggregate or for grass sieve sand/compost/loam mix. Level using a rail or wooden batten.



Step 3.
Install ACO BorderGuard at this stage. Install ACO GroundGuard tiles along the length of the area. Then assemble ACO GroundGuard laterally. Interlock the fastening clips. For best performance the tiles should be laid in a staggered pattern.



Step 4.
Peg every other tile using two nails per tile through the holes at the corner. If used on slopes (up to a max of 5°) every tile should be pegged as above. Fill in the ACO GroundGuard tiles with the chosen finish.

Visit www.aco.co.uk/urban for more details

ACO GroundGuard accessories



Stabilisation fabric



BorderGuard



White parking bay markers



Steel nail



BorderGuard nail

35

Economical solutions for water conservation in the home and garden



ACO StormBrixx



Award winning domestic soakaway

Benefits

- Enables compliance with current building regulations concerning rainwater runoff from drives
- Certified structural integrity for long life assurance
- Lightweight design for easy on site handling

Applications

- Gardens
- Drives
- Patios



38

ACO Rain-Ceptor



Domestic rainwater harvesting systems

Benefits

- Two systems are available to deliver water to a range of household appliances and services on demand
- Storage volumes range from 1380 to 2060 litres to meet the requirements of a wide range of property sizes and rainfall volumes
- System is designed for straightforward installation and connection to required services

Applications

- Direct feed system for non-potable water e.g. toilet flushing and washing machines
- Garden irrigation for garden use or car washing



39

**ACO Water Management
Urban + Landscape**

A division of ACO Technologies plc
ACO Business Park, Hitchin Road,
Shefford, Bedfordshire, SG17 5TE

Tel: 01462 816666

website: www.aco.co.uk/urban

The ACO Group: A strong family you can depend on.

Your local stockist is:

