

This drawing is to be read in conjunction with the manufacturer's installation recommendations

Roadbase material and depths to suit Engineer's specification. Min cover to be in accordance with Table A

ACO StormBrixx tank piece 1200x600x610mm (H) to be brick or cross bonded; part number 314020

Cast Iron cover and frame; part number 27032

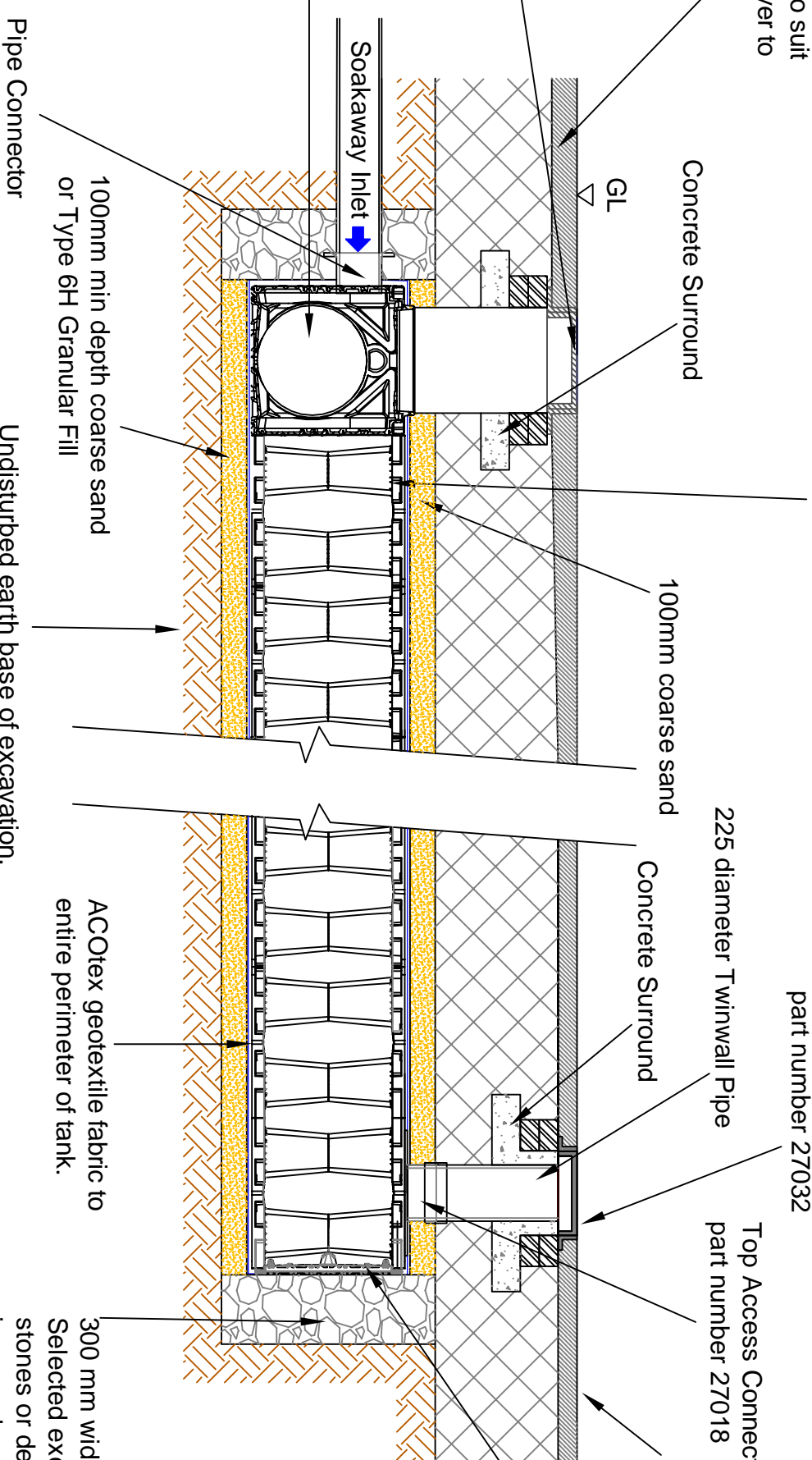
Top Access Connector; part number 27018

Finished road surface: Macadam, concrete, etc..

StormBrixx side panels to entire perimeter of tank; part number 314021

Extension to Cast Iron cover and frame part number; 27033

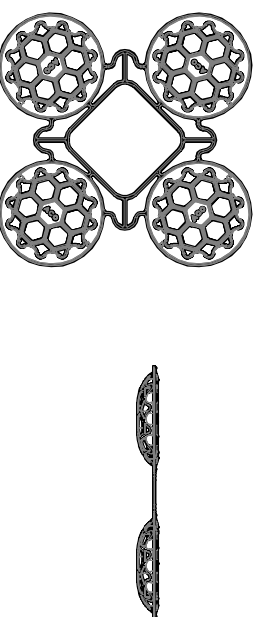
ACO StormBrixx Access Chamber part number 27034; appropriate sides to be cut to the largest size diameter to allow access to the main StormBrixx structure.



Undisturbed earth base of excavation. Excavated area to be smooth, firm and level, free from lumps and debris and suitable to carry anticipated loads.

300 mm wide Backfill around side perimeter. Selected excavated material free from large stones or debris, or Type 6N or 6P compacted in accordance with manufacturer's instructions and to suit compaction plant employed. (Backfill to be complete to top of units prior to any fill being placed to the top of the tank)

NOTE:
Top covers part number 314022 shown below to be installed on top layer of StormBrixx Modules only.



DR R.HILL

Location	Minimum cover depth (m) (4)
Minimum cover depths (1) over the top of ACO StormBrixx	
Non-Trafficked areas i.e. Landscaping	0.5 (2)
Car parks, vehicle up to 2500kg gross mass	0.6
Car parks, occasional vehicle greater than 2500kg (3) gross mass	0.8
Occasional HGV traffic up to 44000kg GVW (HA loading)	Please consult with ACO

- (1) Assumes 27 degree load distribution through fill material and overlaying surface asphalt or block paving
- (2) Minimum cover depth to avoid accidental damage from gardening/landscaping work
- (3) Occasional Trafficking by refuse collection or similar vehicles (typically one per week)
- (4) Please check minimum frost cover depths for geographical location

Scale: **N/A @ A3**

Projection: ISO-E

Unit: mm

Information contained in this drawing is a copyright property of ACO Technologies. Any reproduction in part or whole without written permission of ACO Technologies is prohibited.

Date	Name	Checked by	Drawing No.	Issue
Drawn 14.11.11	RS	NR	E1-E01-080-3	A
Updated 14.11.11	RS	NR		

Title: **ACO STORMBRIXX SOAKAWAY Trafficked area (without overflow)**